

Bishopston

Matters

Tel: 07881 924059

issue 163, Dec 2022



Season's
Greetings



The heart of Yoga in Bristol
yogawest
0117 924 3330

**Yoga classes for all levels
and abilities: book now for
a January course!**

Christmas Gift Idea How about giving a
4-week Foundation Yoga Course?

www.yogawest.co.uk
Denmark Place, Bishopston, Bristol BS7 8NW



**FIND YOUR
SPARKLE**
WELCOMING NEW PATIENTS

Horfield Dental Care,
525 Gloucester Road, Bristol, BS7 8UG



**Horfield
dentalcare**
0117 951 3026

Register & Book Online
www.horfielddentalcare.co.uk
info@horfielddentalcare.co.uk

Bishopston Matters is delivered to **10,500 different homes** per quarter across Bishopston, Ashley Down, Horfield, St Andrew's and parts of Redland

An open letter to every HMO (Professional or Student) landlord in Bristol



You may be reading this as an owner of one property or a portfolio, however the issues faced by every landlord are the same. Firstly, if you are managing your

HMO property yourself, you may feel that it is taking up huge amounts of your time. Was it not the opposite result you were hoping to achieve?

Many landlords invest in property because they believe that it will allow them to have more time to do other things that are important to them in life, however the reality can often be that they are creating just another full-time job for themselves. This is where using an agent comes in; by using your specialist JBS Lettings Bristol HMO management service, you are not just getting your time back, you are getting peace of mind that your property is being looked after and maintained to the high standard you want and your residents deserve.

For example, we have one client who has five HMO properties and was self-managing for years and finally they decided they did not want to be the full-time handy man (sound familiar?) and wanted more time to spend with their family and friends, so they instructed us to manage these units. Firstly, we do not tie any clients into a fixed period for our management service; if you are not happy, it is just one month's notice.

Secondly, we advised the client on the market values of their properties and over the last 12



Jack Stephens

months the rents have been brought in line with the correct values, so our management fees have been completely covered (and some) so it has not cost him anything but given him his life back.

If you are currently using a different letting agent, I would encourage you to ask them how often they are visiting the property for routine inspections? To manage an HMO effectively your property manager needs to be visiting at least every 3 months for routine inspections and perhaps more to keep on top of works orders and resident relations.

Another question would be, has your property manager ever actually visited the property themselves? Some high street agents who do not specialise in HMO management may only be visiting annually and their property managers are sometimes not even located in Bristol. From our perspective as a specialist, there is no way you can effectively manage an HMO property in that way.

It could be costing you more in time and money not to reach out for a non-obligatory discussion about your property. Please get in touch if you would like to find out more about how we can help you.

Jack Stephens

Jack Stephens, Director of JBS Lettings Bristol

0117 911 2919

jstephens@jbsbristol.co.uk

jbsbristol.co.uk

91 Bishop Road BS7 8LX



Dear Readers...

It's that time of year again when we feature wonderful festive drawings thanks to Year 4 pupils at Ashley Down School. We also bring you details of local Christmas church and carol services.

As we start to write our Christmas shopping list, we ask you to show your love for Gloucester Road and independent local businesses, when you shop for all of your seasonal goodies. There is so much variety that you will be spoilt for choice. We have a section in this magazine that will assist you in kick-starting some ideas for gifts. Glos Road Central's Christmas market takes place on the evening of Thursday 8 December and is always full of festive fun!

If you need a pit stop when you are out and about shopping, check out new **Cafe Ritual**, serving home-made delights. Take advantage of our **Reader Offers – 15% discount at Areeshaz Dessert Café** on Gloucester Road or a **20% discount off Rooster's Piri Piri** on Cheltenham Road, serving up delicious fast food inspired by world street food.

Email: kerry@bishopstonmatters.co.uk • www.bishopstonmatters.co.uk Bishopston Matters
Bishopston Matters, PO Box 337, Bristol, BS9 4WT **Tel:** 07881 924 059 / 0117 349 4483 @bishmatters

The Ardagh have a great selection of seasonal activities taking place, from building LEGO tree decorations to singing Carols on the Common.

This winter will be a challenge for many people; in response, local businesses and community venues have come together to provide spaces for people to be warm and welcome and enjoy a hot drink or meal – find full details inside.

We also bring you news on a selection of local charities and initiatives that you can easily support that will help bring some festive cheer to those less fortunate than ourselves. From one tin of food or box of chocolates to pledging part of your government heating allowance, whatever you can afford to donate will be gratefully received by local charities and those who receive the care packages.

Whatever you get up to this December I wish you peace and happiness.

See you in 2023!

Kerry x



Christmas Is Here



Visit us today at 177 Gloucester Road

Bishopston Fish Bar Frying High with Success!

Bishopston Fish Bar has gained its place among the UK's top fish and chip shops by achieving the prestigious NFFF Quality Accreditation sponsored by Sarsons Vinegar.

The National Federation of Fish Friers (NFFF), the trade body that represents the nation's fish and chip shops, runs the scheme as a way of raising standards within and enhancing the profile of the fish and chip industry. The scheme is a way of rewarding and promoting shops that provide good quality products and high standards of hygiene, as well as friers who show a high level of competence and are Covid compliant.

To qualify, each shop must go through a virtual inspection by an NFFF approved assessor who assesses the shop's presentation, hygiene and cleanliness, staff training, equipment, frying and sales skills, and most importantly, the quality of the cooked product.

Owner Nick said: "We are delighted to gain our place in the scheme. To be recognised as one of the top fish and chip shops by the NFFF is indeed an honour and a credit to our hardworking staff, who I would like to offer my sincere thanks for their continued hard work and efforts to maintain our excellent reputation."

I would personally like to thank all our customers, new and old. All businesses have found the coronavirus pandemic extremely difficult and the support and encouragement they have offered has been great. It has motivated us to maintain our high standards which have once again been recognised."

This accreditation sets the new benchmark for quality within the industry. It will signal to the consumer that they can buy with confidence where the award is displayed, and it will encourage more outlets to raise their standards.



Bishopston Fish Bar, 264 Gloucester Road, BS7 8PB • 0117 307 9390  Bishopston Fish Bar

Become a host for international students

and earn between **£195** and **£215** per student, per week

- Host up to 4 students at a time
- Self-catering: earn £155/week

Scan the QR code or call
0117 9090911 to learn more

accommodation@ihbristol.com



Community helping community – warm and welcoming spaces

Community partners in Horfield and Lockleaze have come together to create the following warm and welcoming spaces this winter.

Horfield Parish Church, Holy Trinity, Wellington Hill, BS7 8SP – offering a warm and welcome space, tea/coffee and pantry weekends. 9–10.30am, Monday to Friday. All free.

Horfield Leisure Centre, Dorian Road, BS7 0XW – offering warm and welcome space, affordable food. 2–4pm, Monday to Saturday and 7–9pm seven days a week. Free showers, Mon 7–8pm, Weds 3–4pm, Friday 10–11pm and Sat 2–3pm.

Ebenezer Church, Filton Avenue, BS7 0BA – offering Monday morning warm and welcome space 9–11am, Thursday warm and welcome space 10.30am–12.30pm with affordable food, Friday community breakfast and warm and welcome space, 9–10.30am.

One-Off Events part of Welcoming Space at Ebenezer Church

Speedquiz Night – Friday 2 December, 7.30pm. Sign up at: www.ebe.org.uk/blog/speedquiznight

Christmas Dinner (for senior citizens) – Wednesday 7 December, 1pm. Sign up at: www.ebe.org.uk/blog/christmas-dinner-for-senior-citizens

For any queries contact Stewart North on 0117 9791399.

Lockleaze Sports Centre, Bonnington Walk, BS7 9XF – Monday 11.30am–1.30pm, warm and welcome space with affordable tea/coffee/soup. Any queries contact 0117 456 8955.

St Mary's & St James' Gainsborough Sq, BS7 9XA – Mondays, 5–7pm, free hot meal. Second and forth Sunday of the month 9.15–10.30am, breakfast church. Any queries contact 0117 462 0643.

The Hub, Lockleaze Neighbourhood Trust, Gainsborough Sq, BS7 9FB – Wednesday warm



and welcome space and affordable lunch options 10.30am–2.00pm. Friday warm and welcome space with affordable hot drinks, 1–3pm. Any queries 0117 914 1129.

The Vench, Romney Avenue, BS7 9TB – Tuesday 9.30am–3.30pm, warm and welcome space with affordable tea/coffee/soup. Any queries 07710 392 078.

The Old Library Muller Road, BS5 6XP – Monday 10am–2pm and Friday 10am–12pm, warm and welcome space, affordable hot drinks.

All the venues are free access, have disabled access and wifi.



KETTLEFISH
DIGITAL

Marketing services for small business

Consulting | Website
Digital advertising | Offline marketing
Social media | Email marketing

FREE CONSULTATION



bit.ly/KFmatters

07481 438883



THE AERIAL MAN

TV Aerial and Satellite Specialist
Affordable Prices - Reliable Service

- Poor Reception Problems Solved
- Digital Aerials
- Sky Work
- Humax Recorders

- Free Quotes
- Two Year Guarantee
- Additional TV Points
- TV Sales

- Repairs
- OAP Discounts

Freesat
Progressive

0117 967 9028
07818 413 451

www.theaerialman.co.uk

Which?
Trusted Trader



Shine Festive Holidays

With the Christmas holidays approaching, whether you need childcare to work, go Christmas shopping or even a day to relax, Shine is offering the ideal fun Holiday Clubs for children from Reception to Year 7.

At the Shine Sports Ground, BS6, or the Shine Sports Hall, BS9, our top-class coaching team will offer jam-packed days of both sporting and creative activities for children.

Try Festive Football on the Astro at the Sports Ground with our fun inflatable if the weather allows; Forest Adventure with marshmallows and hot chocolate over the fire; Merry Mini's or Jingle Multi indoors at the Sports Hall; Creative Workshops

making baubles, pottery decorations, fun with food and festive treats and so much more.

Running from 9:00 to 16:00, with extended hours from 8:00 to 18:00 for working parents, Shine has activities for children on selected dates from Monday 19 December through to Tuesday 3 January.

DISCOUNT! Get 20% off Festive Football with the code: Football

Get in touch! For more information, head to MyShine.co.uk, or alternatively give us a call on 01174 033 033!

MyShine.co.uk/Holiday-Clubs



Pasitos
spanish for your children

NEW TERM STARTS 14 JANUARY 2023

Classes available every Saturday at Horfield CofE

Online lessons Saturdays 9-9.30am. From 7 years old

LESSON at Horfield school 10.30-11.15am. Lesson for the whole family, babies and children up to 7 years old.

11.20am-12.15pm, 8+ lesson aimed at KS2

Lean on for the 11-year-old lesson will start once I have enough students for a group. Ask for more info.

Lessons paid termly or a pay-as-you-go option is available

GCSE preparation, adult and family lessons during the week in person or online.

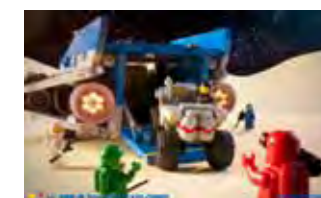
T: 07958 309828 | E: spanishforyourchildren@gmail.com

www.spanishforyourchildren.com



LEGO Club takes place every other Saturday, 11.30am at Bishopston Library. It's totally free and kids and their parents can come along anytime during the morning.

The library has a giant box of LEGO for visitors to share. There is a theme at each session but kids can build whatever they like.



The group will be led by Ben Smith, a local parent, director of animation studio Red Star (who produced the forthcoming

Terry Pratchett movie *The Amazing Maurice* on Sky Cinema) and most importantly a huge Lego fan! Ben generally builds spaceships and sci-fi (as above pic).

A few years back Ben attended LEGO Club at the library but the person who ran it sadly had to stop. Thankfully Ben has stepped in, he shared, "Given I'm a LEGO fan myself, I thought I really should take the initiative here and offer to run it".

Dates for 2022 are 26 November & 10 December. The group reconvenes in 2023 from 7 January.

Bishopston Library, Gloucester Road, BS7 8BN



Life changing

Our entrance exams for Year 7 entry in September 2023 are taking place in January

Call Hollie Matthews on 0117 933 9885



Bursary Awards available

We can help with up to 100% of the fees and other costs



New! Roosters Piri Piri

Fresh, grilled & healthy

Eat in | Takeaway | Delivered

Delicious healthy street food for your mind, body and soul

Exciting and healthy fast food. Inspired by the vibrant street food from around the world. We specialise in grilled to order, marinated chicken, beef and lamb meals, along with vegetarian halloumi and vegan falafel wraps and salads. You can select from 7 flavours – Lemon & Herb, Medium, Hot, Extra hot Piri Piri, Lebanese, BBQ or Mexican. Meals are complemented by a variety of sides, drinks and desserts.

Open 7 days a week | Daily Meal Deals

228 Cheltenham Road, BS6 5QU

0117 7462 2166 | www.roosterspiripiri.com

Reader Offer 20% off!*

*Not be used in conjunction with any other meal deal / offer. Valid until 28/02/2023. One use per person, in store only.



Delivery via Just Eat • deliveroo • Uber Eats

Need an Accountant?



Our services include Accounts for Sole Traders, Partnerships, Limited Companies, Tax Returns, VAT, Payroll, Business Start-ups and Company Formations

0117 370 0016

FREE initial consultation
iansmith@taxassist.co.uk

Fixed fees agreed in advance

Visit us at www.taxassist.co.uk/horfield
or at 288a Gloucester Road,
Bristol, BS7 8PD

NEED TO STORE YOUR ITEMS WHILST RENOVATING

Keep your items clean & dust free

LOCAL
SELF STORAGE



WWW.STASHEDAWAY.CO.UK

Stashed Away, 91a Romney Avenue, Bristol, BS7 9ST
01179 516325 7am - 7pm, 7 days a week

Advertising Sales Exec/Account manager



Part Time £20K – £24,500k per annum (pro rata part time)

At Matters Magazines we are looking for a passionate and highly self-motivated individual to help further develop our 4 publications.

The ideal candidate will have:

- Good sales experience preferably (but not essential) in media sales
- Excellent communication skills
- Great organisational skills and discipline
- Passion, commitment, drive and determination
- A personality that shines bright!

A respected Bristol business established in 2005. These publications have the community at their heart. This position is for 8 – 16 flexible hours a week, working from home and travelling to visit businesses in the Bristol area – BS6/7/8/9 and North Bristol (BS32/34/36). Salary can be discussed depending on experience and bonuses will be applied when targets are met. Training will be given. The candidate will strive to build long-term relationships with clients and manage their accounts. This is a sales role and resilience is key.

Submit your CV and a covering letter to: sales@mattersmagazines.co.uk
www.mattersmagazines.co.uk – 17 years in the community

LITTLE BATHROOM AND BOILER Company



As the saying goes 'All the best things come in small packages' and this is true of the Little Bathroom and Boiler Company (LB&BC). Their showroom may be small, but their scope to deliver on fabulous bathrooms and kitchens is HUGE! I met up with owner Jamie at the family business based at 32 Gloucester Road North.

Jamie has a lifetime of experience fitting kitchens, bathrooms, boilers and plumbing. He was driven to open his own business to enable him to work with the best range of products and not compromise on quality when working on projects in peoples' homes. He only works with products he would happily fit into his own home. He shared, "Being able to deal directly with the manufacturers enables people to have exactly what they want at a fair price." Something that is all too important at this time.

Bathroom Design & Fit – Jamie shared, "We advise people what all the possibilities are for their projects – can a toilet be moved? What style of bathroom furniture will best suit that space? We only sell people products that will work well in their specific bathroom, we want people to have the best design to suit each individual space as well as their personal taste." LB&BC can offer people an in-house, 3D design of their bathroom, so clients can clearly understand the potential and be happy with their final design. The business can design and supply a bathroom or see the design through to full installation.

LB&BC is delighted be able to offer leading technology in bespoke bathroom mirrors. They are the only supplier in Bristol (and one of only two in the country), who can supply hand-made in England mirrors, in bespoke sizes and shapes. They can be customised to light up, change colour, heat up, have blue tooth and a shaver socket!

LB&BC also do great work with kitchens. In order to offer their customers the best available deal to suit their needs, they work on a 3 tier system.

- Tier 1: Clients can visit the LB&BC showroom, view samples of surfaces, finishes and furniture. Select a kitchen from a catalogue and have it delivered to their home for self-installation – resulting in a large saving
- Tier 2: All of the above but with the kitchen plumbed in by LB&BC
- Tier 3: LB&BC will design, supply, fit and plumb in your bespoke kitchen

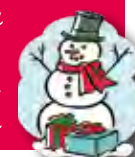
Jamie is keen for people to get a good deal on their kitchen without compromising on quality. "Whichever tier you select, you will receive goods of higher quality than alternatives in other larger, nationwide retailers".

As their name would suggest, LB&BC have years of experience in supplying and installing boilers too.

Siobhan Magnus manages the showroom and produces kitchen and bathroom designs that you will be delighted with. She can of course discuss boilers too. **Do get in touch and get your project underway soon.**



We wish our customers a very Merry Christmas and invite you to visit our festive window display



Christmas Message

In mid-November at B&A Church, we weren't sure whether it was ok to talk about Christmas before Remembrance Sunday was over. My contribution to the debate was to point out that John Lewis had already released their Christmas advert.

Early that morning a friend had sent a message: 'You HAVE to watch the John Lewis advert NOW'. I then watched it. I cried. I shared it with my wife. She cried. Funnily enough, when we watched it as a team, we all cried. If you haven't watched it yet, find it online and have a watch before you read on. It's a beautiful story and it's heart-warming to know that one of the big Christmas companies is looking out for the most vulnerable.

My wife and I cried because we've been those parents, waiting to welcome a foster child into our home. Typically, the vicar at this point says something about how God is like the foster carer, waiting to welcome us home and we can have this wonderful home and hope in God, if we want it. That may well be true, but it wasn't what struck me as I began to well up. I couldn't escape the truth that at the centre of the Christmas story is a child, Jesus. When I think about how I respond to that child, I realise how much of my life looks like the dad of that advert – just desperate to do the things He does and welcome Him into my life.

So, I'm grateful to John Lewis and I'm grateful to our foster children because they have reminded me that Christian hope doesn't begin with any guarantee of the future or a successful route to it. Christian hope begins with the truth that God is here. Whatever happens, He is here and He wants us to welcome him in.

James Stevenson | B&A Church | Vicar



Over the festive season your waste collection dates are changing.

We will work one bank holiday to get collections back to normal as quickly as possible. Check when we will be coming to you on the calendar below.



Scan me!

Your usual
collection
day

Revised
collection
day

Mon 26 Dec

Tue 27 Dec

Tue 27 Dec

Wed 28 Dec

Wed 28 Dec

Thur 29 Dec

Thur 29 Dec

Fri 30 Dec

Fri 30 Dec

Sat 31 Dec

Mon 2 Jan

Tue 3 Jan

Tue 3 Jan

Wed 4 Jan

Wed 4 Jan

Thur 5 Jan

Thur 5 Jan

Fri 6 Jan

Fri 6 Jan

Sat 7 Jan

Normal collections from
Mon 9 Jan



Christmas trees

Put your TREE out with your first wheelie bin collection from Monday 9 January.

You can also take trees to your nearest Recycling Centre – book before visiting at www.recyclingcentrebooking.bristol.gov.uk



Download

Never miss a collection – download your 2023 collection calendar from: www.bristolwastecompany.co.uk/festive



Don't forget

Garden and bulky waste services pause over the Christmas period.

For top tips and festive hacks visit: www.bristolwastecompany.co.uk/festive

New home cinema demo room

Fraser, Asta & young Adele



On Saturday 8 October the team at Ablectrics had a fantastic day celebrating the launch of their new home cinema demo room. The presence of a Back to the Future DeLorean created a great buzz, with visitors having fun taking pictures in the showbiz car.

Over 250 people enjoyed attending the premiere of the cinema room, sitting in comfort, sipping champagne

while experiencing the very best in light, picture and sound. The state of the art lighting enhances the cinematic experience and is something special.

Ablectrics teamed up with Cinemaworks, (recognised as the best home cinema design and installation company in the South West by the Home Cinema Alliance) to develop their luxurious onsite demo room.

Ablectrics owner, Fraser shared, "Creating this stunning cinema room was a natural development. The demo room allows people to experience what can be achieved in their own home first-hand, as do our interactive displays representing kitchens and bathrooms in our lighting showroom."

If you are looking to have a home cinema installed or have a lighting project in your home or garden that you would like some expert advice on, do get in touch with Ablectrics to book an appointment.



Looking for a great choice of LED Christmas lighting? Pop in to Ablectrics and check out their huge selection of the latest Xmas decorative lights.



ABLECTRICS 33 Zetland Road, Redland, BS6 8AH | 0117 942 5355
Customer car parking and EV charging at front of the shop



www.cryerandcoe.co.uk

cryerandcoe

Cryer&Coe architects

DREAMING OF A NEW KITCHEN?

CALL FOR LATEST UPDATES ON SURVEYS AND APPOINTMENTS



DREAM DOORS®
NEW LIFE FOR OLD KITCHENS

THE UK'S #1
KITCHEN MAKEOVER EXPERTS

- Trusted reputation
- Huge choice of doors, worktops appliances, sinks & taps
- Free planning & design service
- Door swaps to full kitchens - tailored to your needs

www.dreamdoors.co.uk

11/12 The Promenade,
Gloucester Rd,
Bristol BS7 8AL



Call for a free estimate on:
0117 944 3223

Checkatrade.com
Where reputation matters

AVERAGE SCORE **9.8/10**



Local this Christmas

It's that time of year again when time goes quickly and chaos can ensue in the run up to the big day! Fear not, keep it local, start early and actually enjoy the experience of Christmas shopping.

Both in store and online you will find a diverse range of gifts from local businesses; stunning pieces of art to eco-friendly homeware, sweet treats to food hampers, gift vouchers for hair and beauty to bottles of Bristol gin, scented candles to vintage jewellery, gaming keypads to pet advent calendars, dry flower bouquets to sewing lessons, and much more!

Shopping on our local High Street is a far richer experience than a big shopping mall. Why not meet a friend and reward yourself with a meal or drink at one of the fantastic cafes or restaurants on completing your shopping?

I look forward to attending Glos Rd Central's Christmas market on the evening of Thursday 8 December, there will be plenty of festive food, drink and inspiration for gifts at the lovely shops. There'll even be local choir Gurt Lush singing festive carols and songs.

As well as supplying the perfect gifts, Gloucester Road has everything you need to create delicious Christmas bakes, party food and drink, and of course the special dinner on the day itself.

Pearce's hardware has you covered for gravy boats, baking trays and the all-important sticky tape! Pop into Ablectrics to choose from a sparkling range of festive lights for inside and out.

We are blessed to live within this caring community and for all that we have. Christmas is a great time to share the love and support those who may find the extra expense of the festive season even more of struggle this year. Local donations of seasonal goodies or cash can be made to Family Food Action, North Bristol & South Gloucestershire Foodbank and the B&A Church 'Love Christmas' project. You can purchase your trees from Aidbox charity, to help raise funds for the charity.

I wish you a wonderful festive season. If we all pick up some stocking fillers from our High Street, we will help make sure they are here to see in a happy New year. Love local this Christmas.



All your festive favourites at Joe's Bakery

Christmas-ready! Nobody does Christmas confectionary better than Joe's. Their scrumptious range of seasonal goodies includes: Christmas bread, authentic German stollen, Spelt and curd stollen, Mince pies, Cinnamon stars, Panettone Classico, Yule logs and of course traditional Christmas cake.

Christmas market – Joe's is looking forward to taking part in Glos Rd Central's Christmas Market on

the evening of **Thursday 8 December**. The bakery will be offering samples of their delicious festive bakes, which make great gifts for loved ones.

Merry Christmas from all at Joe's! The team would like to thank the community for their continued support this year. They look forward to seeing many of you in the lead up to the big day and wish you a lovely festive season and happy New year!

Joe's Bakery, 240–242 Gloucester Rd, BS7 8NZ • 0117 9071852 • **Joe's Bakery at The Bread Store**, 45 Gloucester Rd, BS7 8AD • 0117 3303798 • joesbakery.co.uk @Joe's Bakery Bristol




Come and sew at Flo-Jo Fabrics Workshop Vouchers Available
The perfect eco Christmas Gift



www.flo-jofabrics.co.uk

room 212 Home to Bristol Artists



212 Gloucester Road BS7 8NU

AHLQ.

AHLQ is run by self-confessed treasure hunter Imogen, who curates a luxurious collection of second hand jewellery. Feast your eyes on her range of sparkling engagement rings, decadent solid gold bracelets and coloured gemstones. Stunning gifts for someone special.

Based in St Andrews but sold exclusively online at www.ahlq.co.uk
Instagram @ahlq.store



THE FLOWER SHOP BRISTOL

Christmas Workshops & Gifts

We are offering **Christmas Wreath workshops** on the following dates – **1, 9, 10, 11, 14, 15 December, 6-8pm**

You can also pick up do it yourself **Wreath kits** and **Candle arrangements**, call into the shop or visit our webshop.

Phone to enquire about **workshops for Christmas parties**, 8 people minimum. £60 Per person, mince pies and mulled wine included!



Local & National deliveries available
www.theflowershopbristol.com
Tel 0117 942 0050
145 Gloucester Road, BS7 8BA



Festive events at the Hub

Marie Curie Gloucester Road is currently relaunching the Hub, after Covid, as a community space. The Hub is set within the Marie Curie shop. It is a space with tables, chairs, a sofa and a coffee machine. It's for everyone to use for a pause, a chat with friends or even as a workspace. It is open within shop opening hours (9.30am–5pm). It is also a safe space where people looking to find out more about Marie Curie's wider services can come and have a chat.

As part of that relaunch, they are running a series of Christmas markets and events.



3 December – Wreath Making
10 December – Christmas Market
17 December – Live Music

19 December – Christmas Decoration workshop

The Christmas market runs from 9.30am to 4pm. The workshops are £25 each. You can book the workshops in-store or contact the store on 0117 442371 | gloucesterroad@mariecurieshops.com
105-107 Gloucester Road, Bristol BS7 8AT

B&A Love Your Neighbour Winter Appeal



This winter, Churches across Bristol are opening their doors to be Warm Spaces where people can come and find warmth, food and access to the support they need. Local B&A

church are playing their part by providing hundreds of hot meals cooked at B&A and delivered to these Warm Spaces each week. They'll also be delivering their Love Christmas gifts and boxes to people accessing Warm Spaces this Christmas, offering hope and support to those struggling the most.

Please consider making a gift to help them raise £30,000 for the Winter Appeal. The money raised will go towards the set-up costs for the B&A kitchen so that they can continue to provide hot meals throughout the winter, and towards Christmas gifts and boxes of supplies to be given away to users of Warm Spaces.

Find out more and donate online at www.babristol.org/winterappeal or visit B&A Food Pantry at B&A church, 160a Gloucester Road, BS7 8NT any Saturday morning between 10am and 11am.

GRAPE & G GRIND

**Delicious wines,
craft beers,
artisan spirits & cider**

FREE LOCAL DELIVERY
for orders over £60

**Open Monday to Saturday
10am – 6pm
Sunday 11am – 5pm**

GRAPEANDGRIND.CO.UK

**101 Gloucester Road
BS7 8AT**



Belgian waffles 🍌 Freak shakes 🍌 Cookie dough 🍌 Gelato 🍌 Coffees 🍌 Milkshakes 🍌 Crepes 🍌



Areeshaz Dessert Café

It is wonderful to welcome Areeshaz Dessert Café to Gloucester Road (opposite the Prom). This sweet business opened its doors in September 2022 and has received fantastic feedback from the community along with 5 star Google reviews.

Family business – It was great to meet with owner Imran, who runs the family business with his brother Atta. The venue is even named after Imran's daughter, Areeshaz. For the last four years the brothers have worked at a respected dessert business. They felt there was a need to fulfil on Gloucester Road and with the opening of Areeshaz, are pleased to bring their knowledge and passion for the industry to the area.

Quality desserts – Areeshaz specialises in Belgian waffles, Gelato, Crepes, Freak shakes, Cookie dough Milkshakes and Coffee. There is a wide range of scrumptious hot desserts as we enter the colder months. Imran told me they work hard to source quality ingredients to ensure they serve the best tasting desserts.

Proof is the pudding! I can recommend the generous sized waffles; you can select your own favourite toppings but I opted for milk and white chocolate sauce with a scoop of banana gelato–

indulgent but truly delicious! My family were delighted when I returned with waffle, chocolate fudge cake and rich gelato; it brought huge smiles to all of our faces – and taste buds!

Everyone catered for – This dessert specialist has a good range of vegan options, and will make up vegan versions if you spot something else on the menu that you fancy. They are happy to accommodate allergies; please just ask.

Visit with your Reader Discount voucher

The venue is open from 11am to 12pm, 7 days a week so there is plenty of time to visit and enjoy your favourite dessert, with your **15% discount voucher!**

23 Gloucester Road, BS7 8AA | 0117 462 2631

Also on Deliveroo, Just Eat and Uber Eats



Please like Areeshaz Dessert Café
Areeshaz_desserts

Reader Offer!
15% Discount*

To redeem, simply take this voucher into Areeshaz's and quote – **BM1522**. *Not to be used with any other offers, discount only redeemable once per person, valid until 30/12/2022

Sefton Park PTA

Christmas TREE SALE

SATURDAY : AT SEFTON PARK SCHOOL
3 DEC 2022 ST. BARTHOLOMEWS RD BRISTOL
 9AM-12PM BS7 9BJ (or via Happy Lane)

£5 Delivery, FREE for over 60's (within 500m)

Christmas Bazaar
Saturday 3 December, 10.30AM – 1.30PM
**Free Community Event
 EVERYONE WELCOME**
 Badminton School | Westbury-on-Trym
 0117 905 5200 badmintonschool.co.uk

Christmas at Roxfords Pet Shop

Open 7 days a week • Free local delivery

Seasonal treats for all pets – Roxfords has a fabulous selection of Christmas gifts for your much-loved pets. To play with, Kong have a festive range of balls, plush and tug-of-war toys for dogs, and soft and crackling, springy toys for cats. To eat, there are rawhide Nutcracker soldiers in chicken and peanut butter flavour, dog-friendly chocolate Santas, and hand-made cookies, muffins and Christmas puddings, beautifully decorated and boxed from Barking Bakery – the perfect way to say 'Happy Woofmas!' If you would like to combine treats and toys, why not pick up a doggy Christmas stocking lovingly created by Roxfords?

The small, furries can enjoy munching on their Christmas Flower 'n' Forage Tree from the comfort of their Winter Hay Cottage. Rabbits can have fun gnawing their Woven Star Trio made from natural corn leaf, loofa and wood slices.

NEW! Veterinary food – Integra protect is a licenced Veterinary product which Roxfords is now pleased to be permitted to sell. There are wet and dry feeds in the range, suitable for both cats and dogs. This specialist food addresses four common problems: Intestinal, Urinary, Sensitivity for cat and dog, and Diabetes in cats.

155 Gloucester Rd, BS7 8BA • Tel: 0117 924 8397 • roxfordsthepetshop.co.uk

New! Integra Veterinary feed for cats and dogs



Merry Christmas!



Treat yourself this Christmas with Hobbs House Bakery

The countdown to Christmas has officially started! Along with our all time Christmas favourites, we have some new products we can't wait to share with you...

Say hello to our new Luxury Almond Mince Pies. We've taken a twist on our Classic All Butter Mince Pie recipe and added a hint of zesty orange, almond frangipane and flaked almonds to finish. Another exciting new product this year is our Stollen Bites. Made using golden marzipan, candied fruits and spices, they create the taste of Christmas in every single bite. We have also introduced a delicious Cranberry & Orange Bakewell. Buttery shortbread thickly spread with jam, cranberries and almonds. Our classic Bakewell made Christmassy.

If you're more of a savoury person, don't worry we've got just the thing. Our Classic Cranberry & Sage Sourdough is beautifully fragrant and a true taste of Christmas, the perfect partner to your baked camembert and also makes brilliant stuffing. Our newcomer this Christmas is our Cheese & Onion Brioche loaf, the star of the dinner table. Like our traditional enriched all-butter Brioche, but made with black onion seeds and cheese swirled through the



dough. Enhance the flavour even more by warming it through, just try not to eat it all in one go! If your tradition is a Christmas cheese board then we have the perfect addition. Our Fig & Walnut loaf is beautifully handcrafted, enriched with black treacle and delicious generously served with cheese.

Make your Christmas traditional and pop into our Gloucester Road shop to pick up an order form and have your Christmas treats ready for the big day.

We have loved being on Gloucester Road the last 5 years and we would like to thank all of our customers for their support, and we wish you a very merry Christmas.

Visit us today at 177 Gloucester Road



Family Food Action Xmas Appeal



FFA work with four community partners – The Vench in Lockleaze, St. Paul's Children's Centre, Felix Road

Adventure Playground Easton and May Park Primary School Eastville.

As Christmas approaches, we're all feeling the pinch of the cost-of-living crisis, but this is going to be an especially hard winter for low-income local families who just can't afford food and fuel. Families who, due to a storm of global, societal, and economic factors are going to bed hungry and sending their children to school without food. Families from all walks of life and ages who have resorted to using foodbanks for emergency supplies not because they want to but because they have no choice.

So, Family Food Action is putting out a special plea for donations to help give these children and families some relief this Christmas. **You can donate:**

- toiletries and treats – things that immediately fall beside the wayside when budgets are tight
- money (one-off or regular) so FFA can increase deliveries of nutritious foods to our partner organisations – who work with families in the most deprived areas of Bristol and provide food within the context of wider support
- your time and skills – become a FFA volunteer

You might even consider setting up another FFA street collection hub. You'd join an expanding web of streets in North Bristol who collect weekly donations for FFA. It's a great way of getting to know your community better, taking action and creating links with other communities in need of support.

If you would like to find out more, email: contact@familyfoodaction.org.uk or visit us at The Ardagh, on Horfield Common, every Tuesday 10am – 1pm



Delicious home-made cakes, Brunchrittos, Bahn Mi's and pastries all made on site by professional chef and owner Kelly Avis.

Vegan | Vegetarian | Gluten free options
Clifton coffee | Teas | Eat-in or take-away
Free wi-fi | Independent

360 Gloucester Road, BS7 8TP

Open: Tues to Fri 9.00 – 4.30, Sat 9.30 – 4.00

f Ritual Coffee BS7 @ritualcoffee.BS7





News from Glos Rd Central

We're excited to announce that our popular late-night opening and **Christmas Street Party will take place on Thursday 8 December, 5.30–8pm.**

This is a great opportunity to get your Christmas shopping done with the joy of bumping into friends, enjoying festive food and drink and getting inspired by our lovely shops. There will even be local choir Gurt Lush singing seasonal songs.

You'll find lots of creative things to do at the Christmas Street Party. Paper Plane will be encouraging children and adults alike to create cut-out snowflake decorations outside the shop (be sure to pop in to see their new makers – from Bristol Made body products to new Jigsaws). Room 212 will have a huge array of Christmas decorations and also the opportunity to make your own with artist Emma Catherine (famous for her giant Moon paintings). Rambling Rose will be selling wreaths, festive bunches and jam jar arrangements, plants and more.

Sidney and Eden will have their delicious hot Christmas drinks – mulled wine, mulled cider, hot spiced apple and hot chocolate with Jameson's or Baileys. Gopal's Curry Shack will be serving their delicious veggie curries from Pawson's – they always sell out as they're so delicious! Preserve will spill out onto the pavement with lots of seasonal goodies. Joe's Bakery will have delicious festive treats for you to sample and buy.

Nola Interiors has a great selection of sustainable Christmas gift ideas including luxury Lambswool scarves and wool throws, eco-friendly recycled blankets, organic scented candles and diffusers, coloured glass vases, jute baskets and an array of wooden and glass Christmas decorations. The shop is celebrating five years trading on Gloucester Road with a newly refurbished shop exterior and a beautiful mural, painted by Room 212 artist, Carla James.

Nuala and her team will be offering food, drinks, massages, goody bags, hair demonstrations and consultations during the evening. Outside the hair salon you will be wowed with a live fire act!



Jenny Urquhart

JoJo Beauty will be offering mulled wine and mince pies and giving away mini goody bags with Neal's Yard samples and a chocolate. Owner Jo will be doing hand massages and her other therapists will be on hand to chat to people about what they do, including energy healer, Kitty.

Osna Therapy will be delighting you with their new products, including doggie products 'Molly's Mates'. The Gurt Lush choir will sing Christmas carols outside, and also outside Sainsbury's, to raise funds for their sponsored charity 'Feed the Kids Project' in Uganda. Osna will be supporting this charity by donating the proceeds from selling their popular mulled wine!

Billie Jean Cashmere event will be returning by popular demand – a great chance to stock up on gorgeous pre-loved sweaters, hats and more. Oddsox will be open late with a special pre-Xmas promotion for all you bargain hunters.

We really look forward to seeing you and helping us to get in the festive mood! Please do support all your local shops on Gloucester Road this Christmas – we wouldn't be here without you!

Follow Glos Rd Central on Facebook.

Billie-Jean Pop Up Cashmere Event

Glos Rd Central **Christmas Street Party**
Thursday 8 Dec, 5–8 pm. On forecourt of



194 Gloucester Road, Bishopston

Seasonal news at Osna



Introducing Heitor Corsi

Osna owner Bridget is excited to welcome Heitor to her Therapy Centre. He too is an extremely experienced therapist, who specialises in Sound therapy. **Sound therapy** is the therapeutic application of sound

frequencies to the body / mind of a person, with the intention of bringing them to a state of harmony and health. A session is held on a monochord (sound) bed and several instruments are used with the purpose of creating soundscapes that evoke rich and unique moments of intimacy with yourself.

Couples Massage is now available at Osna. Why not book a treatment for you and your partner or your friend? Osna is offering 1-hour treatments (or longer) on request. Essential oils can also be used in a session. All treatments are specially tailored to each individual client's needs. Different therapies can be combined to achieve the ultimate experience.

New! Bareskin products – Bridget is excited to be adding new products to her popular Bareskin Range. These include: Muscle rub balm, Shampoo bars,

Whipped shaving cream & soap, Hand/body wash for all the family, Multi-purpose balm, Ready to use face masks and Solid perfume scented with essential oils.



Bridget



Molly

Molly's Mates pet skin care –

Introducing a new, natural doggie range, 'Molly's Mates' inspired by Bridget's own dog. Molly has very sensitive skin and had a bad reaction to fleas; determined not to use any chemicals on her skin, Bridget decided to start making balms and oils to heal her, which

turned out to be very successful – and Molly's Mates was born! Bridget has created a range of dog soaps made from 100% coconut oil and safe essential oils to help prevent fleas and keep your dog smelling nice. Dry dog shampoo that can be safely used on bedding as well. Doggy balm which can be used for sore paws and other ailments. This range is made from natural ingredients and more items will be added in 2023. Bridget is also happy to make up bespoke recipes for your wonderful pet's specific needs.

234 Gloucester Road, BS7 8NZ | 0117 907 5884
www.osnatherapy.com/shop-1.

Refutrees

Aid Box Community launched Refutrees in 2017 to help finance their Welcome Hub and Free Shop. They sell Christmas trees (stands & lights), with all proceeds going to aid the work of the charity. Trees are sold in their



Refutrees shop on Gloucester Road and delivered from the site to online purchasers. Refutrees is Aid Box's biggest fundraising event.

The last delivery from their online shop is Saturday 17 December. The Christmas Shop will be open every day from 10.30am – 7pm until they run out of stock!

222 Gloucester Road, BS7 8NZ | 07735 895538
www.aidboxcommunity.co.uk/refutrees

Pearce's Hardware



Trading for nearly 130 years, Pearce's Hardware is a traditional store with traditional values, we sell

just about everything you can imagine you might need for your home and garden.

We are proud of our heritage and our contribution made to the Gloucester Road over many years.



Christmas ready!

We have a huge range of gifts to suit all budgets. You can also pick up Christmas essentials such as baking trays, gravy boats, decorations, festive lights and of course sellotape!



295 Gloucester Road, BS7 8PE
Tel: 0117 924 5787



Exciting work & collaborations at niche

As always when I visit Niche, there is a great buzz in their shop and gallery. While I waited to speak with director Rupert and manager Siobhan, I enjoyed seeing a happy customer collecting a much-loved print that had been beautifully framed, along with her 9-year-old daughter's fantastic piece of art – three large insect illustrations, which had been cut out and mounted to give a 3D effect. As well as working with numerous professional artists and businesses, Niche is pleased to take on individual items to frame that are precious to their owners.

When I started talking with Rupert and Siobhan, they had news on many exciting projects to share.

Christmas Print Shop – In the run-up to Christmas, Niche will have a print shop set up in their exhibition space at the back of the shop. They work with such a fantastic range of talented artists that you will be spoilt for choice when it comes to choosing a print. You will be able to select prints in a diverse range of style and subjects – there will be something to delight even those who are the most difficult to buy for! To make life easy, the art prints will be printed in mainly standard sizes, so while in store, you can select a frame from Niche's off-the-shelf range and leave with a framed piece of art ready for Christmas wrapping.

Christmas opening – Niche is open from 9am–4pm Christmas Eve and then back open on 28 to 31 December, 10am–4pm. Normal hours resume from Tuesday 3 January 2023.

RWA Annual Open Exhibition – This dynamic and varied exhibition invites art submissions across a wide range of media, and is a showcase of some

of the most exciting artists from across the country and beyond. Niche is delighted to be framing the work of many of the artists who have been selected.

The local business is also pleased to sponsor the Creativity award, which looks at works that use materials in an interesting way.

This year they selected a piece created by Rose Vickers. Niche were delighted to award Rose her prize of £250 cash and £250 of printing and framing, at the exhibition launch evening. The RWA Open Exhibition runs until 8 January 2023 and is well worth a visit.

Wildlife Exhibition at Future Leap – Niche is pleased to be collaborating with their neighbours across the road – Future Leap, on their 2023 Wildlife Photography Exhibition.

Amateur photographers are invited to submit an image, that if picked, will form part of the exhibition. Niche will be printing and framing the work of the 18 successful applicants and also providing a prize of £100 vouchers for the worthy winner. Niche look forward to selecting a winner with Future Leap. Submissions close on 30 November 2022.

Keep an eye on Niche's social media and futureleap.co.uk to find out more. This free exhibition, launches on 24 January 2023 and will spend a month at Future Leap then come across to Niche's gallery for two weeks.

01179 422213 | nicheframes.co.uk

@nicheframes @NicheFrames

NicheFramesniche, 4 Zetland Road, BS6 7AE
Free customer car parking just off Cranbrook Road



REASON INTERIORS

Reason is celebrating one year in their new, spacious Gloucester Road venue and 12 years of trading on our fabulous high street.

The larger shop has enabled them to extend their ranges; they now stock Beach Clean table mats and coasters made from sustainable cork and recycled EVA plastics; each product is a unique design.

Other new ranges include Eco Braided Rugs, which are made from 100% recycled plastics and can be used indoors and outdoors. Luxury socks are a further addition; you can select from Pairs of Scotland, producing alpaca socks, sustainably made in Britain and sumptuous Sommerville slipper socks, with a little glitter and anti-slip base.

It is the perfect time to cosy up with one of Malagoon's sumptuous blankets; Anneke Bierma, textile designer of the gorgeous throws, lives by the motto, "Live in the moment! Free your spirit!"

Jill Pargeter's collection of hand-printed decorative textiles has been an instant hit. Her work is inspired by folk art and the arts & crafts movement. Isla Middleton's organic prints celebrate seasonal vegetables, fruit and flowers throughout the year in the 'Growing through the seasons 2023' calendar.

As always, there are plenty of vintage treasures to be found; some gorgeous glass cake stands, colourful French, ceramic bowls and biblical figurines stood out.

All this and your festive favourites – Advent candles, luxury Christmas cards, classy crackers, wrapping paper, beautiful garlands, vintage tree decorations, fabulous new giant, paper gift sacks and much more!

97 Gloucester Road, BS7 8AT • 0117 329 4505



What's new at the green room

A new home for their salon director – it is with both sadness and happiness that I share the news that salon director Jo, is heading to Cyprus in early 2023. I heard all about her plans while having my hair cut recently. After many years leading the Green Room on the Prom, Jo and her partner have decided it's time for a new adventure. Rest assured however, the salon itself will remain open, with the day-to-day running being overseen by her more than capable team, while Jo assists from home. The salon is a huge part of Jo's life so she is still keen to be involved. If like me, you have a specific type of hair (unruly curls for me!), Jo is carefully working out which of the Green Room's highly experienced stylists – Karen, Paul, Gemma and Adrienne – to pair you with; we will all be in safe hands.

Kevin.Murphy COLOR.ME GLOSS is a semi-permanent hair colour, with bond-building technology made with vitamin C, to deliver colour with strength and shine. As well as looking fabulous with coloured hair, Jo explained there is also a clear treatment in this range, which is ideal if you want to

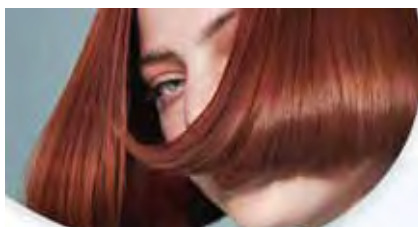
keep your natural colour but give it a lift with a super-glossy finish. This can work extremely well if you wish to keep your grey hair but desire some shine.

Fabriz Quick Fix is an in-salon protein treatment the Green Room has recently started to use. The treatment that takes just half an hour, with results that last for up to a month. Quick Fix is used to define curls, tame frizz and create healthy hair that's easier to manage, whatever style you choose. Fabrizio have other treatments in their range; ask in salon for further information.

Festive goodies – The Green Room has some Christmas gift packs of styling products available along with popular gift vouchers.

Merry Christmas! The team wish you all a merry Christmas and happy New year! They will be closing at 1pm on Christmas Eve and re-opening on Tuesday 3 January 2023.

15 The Promenade, Gloucester Road, BS7 8AL
Tel: 0117 942 75 75 [f The Green Room](#)



Treat, make, bake!

Festive sweet treats!

Scrumptiously Sweet is set to bring joy to many people's worlds this festive season. If you are creating your own advent calendars, you will be spoilt for choice when it comes to sourcing delicious surprises for each day.

There is a huge range of edible tree decorations in all different designs – I particularly like the stacks of choc presents tied up with gold thread.

Special confectionary makes a welcome gift; friends will be sure to get into the festive 'spirit' on receipt of individually foiled liqueur kegs or lavish fruit designs. A large bar of indulgent chocolate is always on my wish list and there is a huge range to choose from, ranging from – Gin and tonic to oat milk chocolate bars. There are chocolate bombs which you add to milk as well as chocolate cigars.

New this year, you will find some beautiful candles that make great gifts at the back of the shop.

Christmas creations

Set within Scrumptiously Sweet, the Yarn Shop has a fabulous range of sumptuous, chunky, glitzy, multi-coloured yarns to knit up something special this festive season. If you would like some inspiration there is a huge collection of patterns to select from – garments to knitted snowmen, reindeers and elves! As well as yarn, there is good stock of knitting, crochet and sewing needles, along with threads and embroidery silks. To complete your homemade creation, you can choose from a wonderful range of fancy ribbons and decorative buttons. There are some knitting sets, pom-pom makers and Dolly bobbins that make great gifts for kids.

Seasonal bakes

I loved the seasonal baking tins shaped as sugar canes, reindeer, snowmen, Santas and stockings. If a large cake is a bit ambitious the kids will love making ginger bread with their festive-shaped cutters. Once baked, you can present your cake on one of Scrumptiously Sweet's metallic, foiled boards; there is a wide range of colours, shapes and sizes to choose from. Ready-to-roll icing is always popular at this time of year along with the metallic and festive-printed cupcake cases. Whether you like traditional festive cake cuffs with holly and robin figurines or a touch of edible glitter or star sprinkles on your cakes, Scrumptiously Sweet has it all.

83 Gloucester Road, BS7 8AS • scrumptiouslysweet.co.uk • 0117 329 7864



Trusted, local, independent computer store and workshop

- PC & laptop repair services
- Refurbished PCs & laptops
- PC Hardware & Peripherals
- Gaming keyboards & mice
- Custom built PCs
- Free counter service
- Friendly customer service

www.ilovemypc.co.uk
Open: Monday – Saturday 9am – 6pm

0117 9248755 • Sales@ilovemypc.co.uk
207 Gloucester Road, BS7 8NN [f](#) [i](#) I Love My PC Ltd

Some great gifts for gamers!

Merry Christmas to all of our clients

4.8 *** Google reviews**
'Ian and David are experts in their field, lovely blokes and have the best rates I have come across yet... Will be recommending to family and friends 100%'

4.7 *** Facebook reviews**
'Amazing service, fantastic and competitive pricing, hassle free collection'



SIGN UP TO A MEMBERSHIP
**GET
DECEMBER
FREE**
Valid until 18th Dec

SOUL PILATES REFORMER & BARRE STUDIO



MONDAY

10.45am | Reformer: Align
1.15pm | Reformer: Tone
5.30pm | Reformer: Beginners
6.45pm | Reformer: Empower
8pm | Barre: Uplift

FRIDAY

7.30am | Reformer: Align
9.45am | Reformer: Align
1.15pm | Reformer: Align
6pm | Barre: Flow

TUESDAY

9.45am | Reformer: Align
1.15pm | Reformer: Align
5.45pm | Reformer: Align
7pm | Reformer: Align
8.15pm | Reformer: Uplift

SATURDAY

9.30am | Reformer: Align
10.45am | Reformer: Tone

SUNDAY

10am | Reformer: Align
11.15am | Reformer: Tone

WEDNESDAY

7.30am | Barre: Energise
10.45am | Reformer: Align
1.15pm | Reformer: Uplift
5.30pm | Reformer: Align
6.45pm | Reformer: Tone
8pm | Reformer: Align

THURSDAY

10.15am | Reformer: Align
1.15pm | Reformer: Tone
5.30pm | Reformer: Beginners
6.45pm | Reformer: Tone



**SCAN TO VIEW
OUR INTRO
OFFERS**

www.soulpilates.co.uk
hello@soulpilates.co.uk
0117 214 1655
Bristol North Baths,
Gloucester Rd, BS7 8BE

Charlee Baker Beauty & Wellbeing – New venue

New home – Charlee has recently moved her beauty and wellbeing business from Gloucester Road to the Flamingo Centre on Southmead Road. Her treatment room is located in the Annexe at the back of the Centre, which is quiet and calming – the perfect setting for her cosy, relaxing treatments that she is popular for. The new venue has the added bonus of parking, which clients are extremely happy about.

Winter wellbeing – with darker, colder days it is important we look after our wellbeing; massages are a great way to restore vitality and recharge your batteries. Relaxing, restorative treatments can ease

mental stress – many of us are worried about world current affairs, but Charlee is equipped to help lighten the load with her different holistic therapies and massage.



Pamper parties – what better way to be made to feel special, than celebrating a birthday or hen party with a Pamper and Wellbeing party? Charlee is enjoying visiting groups of people (friends, colleagues, families...) who have

come together to be spoilt with relaxing, beauty treatments. Parties can also be booked for children and teenagers who enjoy being pampered.

The gift of wellbeing – If you are looking to treat a loved one this Christmas why not purchase some Beauty & Wellbeing vouchers? Help get someone's New year off to a great start with them feeling fabulous after receiving a treatment of their choice.

Charlee's Beauty & Wellbeing @ The Flamingo Centre, 175 Southmead Road, Westbury on Trym, BS10 5DT on Wednesdays, Thursdays (until 7/8pm), Fridays and one Saturday a month. Book in soon!

07943 189558 | Charleesbeauty@outlook.com

Charleebaker_beautywellbeing

Charlee Baker - Beauty & Wellbeing



Ladies Only Gym

for your 30 minute workout
for ladies of all ages, shapes and abilities



Visit our website and
follow us on social
media for all the latest
information

trainers.co.uk



**22 Kellaway Ave
0117 944 6650**

Mon - Thu 7am - 7:30pm
Fri 7am - 6pm
Sat - Sun 8am - 1pm



SuperHuman Healing is a new healing temple located in Bishopston and specialised in Transformational Healing, Spiritual Awakening and Ascension Process.

It's mission is to guide people on their path of evolution.

Services offered: Shamanic Healing, Womb Healing, Abdominal-Sacral Massage, Full Body Massage, Spiritual Life Mentoring, Holistic Women Circle, Ceremonies and Events.

Are you ready for the next level?

Reader Offer: £10 off the first treatment

Contact Sabrina on 07415 732 711
www.superhuman-healing.co.uk

*Tired of feeling Weak?
Fed up of ongoing Aches
and Pains?*

*Do you want to create
some Me-Time?*

Want to feel more Supple?

Pilates Active can help



Free Trial Class

limited spaces available

contact: pilatesactive@outlook.com

to book your space NOW!

Local classes on Gloucester Road,
Henleaze High Street & online

07769 723 528

www.pilatesactive.com

facebook.com/pilatesactive



PILATES ACTIVE

Pilates Instructor **Vicky Woodington**

Qualified Level 3 Mat Pilates Instructor

The Bartholomites are back!



The Bartholomites are pleased to announce they will be performing a panto in April 2023, at Horfield Methodist Church Hall, Churchways Avenue. If you would like to be involved, no experience is needed; they are looking for people on stage with speaking parts, to be in the chorus, or helping backstage. Rehearsals will start on Sunday 8 January; to find out more please email: TheBartholomites@gmail.com.

Before then, **The Bartholomites are hosting a quiz at Horfield Methodist Church Hall on Saturday 3 December.** Doors open 6.30 for 7pm start. Tickets cost £5 each (and include a mince pie). Maximum team size of 6. Soft drinks are available to purchase but no alcohol is allowed on the premises. Christmas outfits/hats are optional but you might win a prize! Contact: TheBartholomites@gmail.com for tickets and more details.



Sakya Buddhist Centre
121 Sommerville Road,
St Andrews BS6 5BX
0117 924 4424
bristol@dechen.org

Discover Buddhism: Buddhist Meditation and Talks

The Centre is now open and running the following sessions in person:

Tuesday, 8-9pm

Wednesday 10.30-11.30am (simply meditation)

Saturday, 10.30-11.30am

There is no charge for these sessions – suggested donation of £5 or whatever you feel able to afford.

For further info, email bristol@dechen.org



www.sakyabristol.org
www.dechen.org

LUNAR OPTICAL

wishes you all

a

Merry
Christmas



Be the first to try on our newly refreshed ranges
RAEN and SALT this winter at
Your local, Independent Opticians

291 Gloucester Road, Bishopston, BS7 8NY
0117 9420 011 | info@lunaroptycal.com



Seasonal services

B&A St Andrew's Park, Maurice Road, BS6 5BZ

18 December, 10.30am, Family carols

18 December, 7pm, Carols by Candlelight

Christmas Eve, 3pm, Fancy Dress Nativity

Christmas Day Celebration, 10.30am

www.babristol.org/christmas

Ebenezer Church, 286 Filton Avenue, BS7 0BA

11 December, 4.30pm & 6.30pm, Carols by Candlelight

20 December, 4.30pm & 6.30pm, Christingle Services

Christmas Day Service, 10am

www.ebe.org.uk/christmas

Emmanuel Bishopston @ Church of the Good Shepherd, Bishop Road, BS7 8NA

10 December, 4pm, Carols around the fire, join us for carols around the fire and the Christmas story for the whole family

18 December, 10am, Christmas for the Family – Celebrate Christmas with your pre & early primary schoolers. Activities, carols and the Christmas story

18 December, 7pm, Carols by Candlelight – Celebrate Christmas by candlelight at our service of readings and carols

Christmas Day, 10.45am, Join us for our celebration with the whole family

www.emmanuelbristol.org.uk

Bishopston Methodist Church
245 Gloucester Road, BS7 8NY

18 December, 10.30pm, Carol Service

Christmas Day Service, 10.30pm

bishopstonmethodist.wordpress.com

Horfield Methodist Church
Churchways Avenue, BS7 8SN

18 December, 6pm, Carols by Candlelight

Christmas Eve, 4pm, Messy Christmas for all ages

Christmas Eve, 11.30pm, Midnight Xmas Communion

Christmas Day, 10am, Christmas Day Worship



Holy Trinity Church, Horfield, BS7 8ST

6 December, 7.00pm, Save the Children carol concert with local schools

10 December, 4.00pm, Community carol service

18 December, 6.00pm, A festival of lessons and carols by candlelight.

Christmas Eve, 3.00pm, Christingle Service for the Children's Society

Christmas Eve, 11.30pm, Midnight Mass of Christmas & Blessing of the Crib

Christmas Day, 8.00am, Dawn Mass of Christmas

Christmas Day, 10.00am, Day Mass of Christmas

email: hpc.sec@horfieldparishchurch.org.uk

St Bonaventure's Church, Egerton Road, BS7 8HP

Christmas Eve, 5.00pm, Children's Mass

Christmas Eve, 10.00pm, Mass of Christmas Night

Christmas Day, 8.30am, Mass of Christmas Dawn

Christmas Day, 10.00am, Mass of Christmas Day

email: bristol.stbonaventure@cliftondiocese.com



Festive images thanks to 4B pupils, Ashley Down School



News from Red Dragons Martial Arts

Firstly, we at Red Dragons Martial Arts would like to wish everyone a very merry Christmas!

We have been incredibly busy preparing for the final grading of the year. When everyone else is slowing down for Christmas, our members have been putting themselves through their paces, getting fit and ready for the next step in their martial arts journey.

We are so proud of all of our members. I would also like to thank our staff who have worked tirelessly throughout this year to help propel Red Dragons Martial Arts even further. So, thank you Amanda, Stef and Maria for all your hard work.

A big thank you and a huge well done to Sensei Josh and Sensei Kelly for opening their Red Dragons classes in Yate and Horfield. I can't wait to welcome your members to our very next grading session.

Have a fantastic Christmas and happy New year! I can't wait to see you all again in 2023 for lots more fun!

Kind regards,

Sensei Lloyd



Facebook: Red Dragons Martial Arts

Email: info@reddragonsmartialarts.com | Call: 07779 740 432 to book your free trial.



**Bristol
Grammar
School**

Life changing

The only co-educational school in Bristol to offer A levels and the IB Diploma

Apply now for a place in our Sixth Form from September 2023

Call Angus Masters on 0117 933 9885



**Bursary awards
available**

We can help with up to 100% of the fees and other costs

**greenhouse
learning**

1-1 In-Home & Online Tutoring

- All Ages, All Levels & All Subjects.
- Local, Vetted Tutors.
- Hand-Picked For The Student's Needs.

Tutoring support can help to:

- Build a student's confidence, resilience and desire.
- Steer clear of homework battles.
- Realise a student's potential.

Contact us today:

Email: office@greenhouselearning.co.uk

Phone: 0117 463 0300

Web: www.greenhouselearning.co.uk

GET **BADMINTON** OUR COMMUNITY



**BADMINTON
SCHOOL**



Nursery and Junior School Open Day: Thursday 2 February 2023

Senior and Sixth Form Open Day: Friday 24 February 2023

Or book a private tour at your convenience.

Book your place online now | admissions@badmintonschool.co.uk | badmintonschool.co.uk



Wishing our customers a happy Christmas!



For all your Car & Van Services & Repair

- Services ▪ Repairs ▪ MOT testing ▪ Tyres
- Engine Management Diagnostic & Repair
- Air-Conditioning ▪ Gearbox & clutch repairs ▪ Exhausts



A trusted local garage, we pride ourselves on our honesty, reliability and experience.

Working just off Gloucester Road in Brookfield Avenue, behind C J Hole and the Bristol Flyer.

1 Brookfield Avenue, BS7 8BP



Having the Inheritance Conversation



We're here to help you make a plan to protect your wealth and prepare for the future, whatever that may hold.

If you would like to have a relaxed chat about your circumstances and whether we could help with your plans, including helping you to talk to your family, please don't hesitate to get in touch.

Our services include:

- Pensions & retirement
- Savings & investments
- Long-term care planning
- Powers of Attorney
- Trusts
- Inheritance tax planning
- Probate

For many, the prospect of passing on wealth to future generations is a significant motivation for carrying out financial planning. Knowing that your hard-earned nest egg is going to be used to help loved ones with major milestones such as going to university, getting married or buying a house can be extremely gratifying.

It has been suggested that younger people more and more expect to inherit money from family and potentially make some of their financial decisions based on this assumption.

This could lead to a shock further down the line if an expected inheritance doesn't materialise for whatever reason – the unexpected costs of care, living longer than anticipated without any care needs are just two factors that can have an enormous impact.

Life doesn't always pan out the way we want it to, but making a plan for potential outcomes is always sensible.

Managing the expectations of loved ones can be a difficult task, especially in uncertain times. A great place to start is by making a Will and explaining it to your beneficiaries. Again, this can be difficult and is something we can help with. We can be on hand as a reassuring presence and also to explain any potentially more complex arrangements such as trusts.

We understand it can be daunting to talk to loved ones about money and it's hard to know where to start. This can feel especially overwhelming if you don't feel you have control of your finances.



Richard Higgs (pictured) is a Solla (Society of Later Life Advisers) Accredited adviser which is the gold standard in later life advice.

We are proud to say we have been recognised at the *Just Group Vulnerable Customer Awards 2022* as **Company of the Year** and also Highly Commended as a **Vulnerable Customer Champion**.

To book a complimentary meeting with Richard to discuss your later life financial planning needs, please get in touch by calling **0117 3636 212** or email office@haroldstephens.co.uk.

Free advice

Richard records regular video updates on a range of later life financial topics – search 'Harold Stephens IFA' on YouTube.

www.haroldstephens.co.uk

50 High Street, Westbury on Trym, BS9 3DZ
0117 3636 212



Your Local Award Winning Law Firm

You have our best – every time

Barcan+Kirby offers a comprehensive range of legal services for individuals and businesses, delivered by expert lawyers.

For you and your family

- + Divorce + Separation
- + Family Matters
- + Children Law
- + Domestic Abuse
- + Powers of Attorney and Trusts
- + Probate + Estate Administration
- + Will Writing
- + Court of Protection
- + Employment
- + Your Property
- + Medical Negligence
- + Personal Injury
- + Dispute Resolution

For you and your business

- + Corporate + Commercial
- + Commercial Disputes
- + Commercial Property
- + Commercial Property Disputes
- + Employment

barcankirby.co.uk | 0117 325 2929

hello@barcankirby.co.uk
@barcankirby

BEDMINSTER | BISHOPSTON | CLIFTON | KINGSWOOD | QUEEN SQUARE | THORNBURY

This firm is authorised and regulated by the Solicitors Regulation Authority. No: 568743.

Barcan+Kirby expands Corporate and Commercial team with appointment of Senior Associate

Barcan+Kirby continues to strengthen its Commercial division with the appointment of Senior Associate, Premila Patel, to its Corporate and Commercial team.

Premila has ambitions to support the growth of the department and develop the firm's network of key clients and contacts within Bristol. She will work from the firm's Gloucester Road office alongside Partners Georgina Bryant and Robert Davenport.

Premila joins the firm after working as Legal Counsel for Mitie Group plc, where she advised on service agreements and tender submissions for security, cleaning and landscaping services.

She said: "I am excited to join Barcan+Kirby at their Gloucester Road office and support the strengthening of the firm's reputation for providing excellent corporate and commercial services. The firm will support me to build on my in-house experience of commercial contracts and my understanding of what commercial clients are looking for."

Commenting on the appointment, Managing Partner Bill Willcocks said: "We are delighted to appoint Premila to the Corporate and Commercial department and look forward to the continued growth of our Commercial division."



Premila Patel

Rebecca Ramsden

Editorial Services

Refining your written message

- websites • leaflets/posters • letters/reports
- theses/dissertations

Don't let a typo cost you business

Contact me to find out more about the proofreading and editing services I can offer your business.

Based in Horfield, Bristol

07967 273595 rebeccamramsd@gmail.com

Wardrobes, Drawers, Cupboards and Shelves
full to bursting
Hoarding & Collecting
Dealing with a relatives home
Divorce Bereavement Moving House

Do You Need Help To Declutter?

I work with you at your pace with
empathy and understanding

Free Consultation
For help, advice and solutions



FM



DeClutter Services

Fay Gregory

fmdeclutterservices@gmx.com
078 2107 8526 0117 9550713
www.fmdeclutterservices.com

MOVING HOUSE

Decluttering your property before putting it on the market can increase the selling price enormously and stops you importing clutter into your new home. It presents your property in the best possible light and maximises its selling potential

HOUSE NOT SELLING
LOW OFFERS
POOR VIEWINGS

The first time a buyer sees your property is usually online, so images need to be eye catching and enticing. Removing clutter, using the house doctor and handyman service help to attract buyers and create sales

Decluttering and reorganising your home also declutters the mind. It reduces anxiety and stress by making your home an inviting, pleasurable place to live in and somewhere to feel proud of

FM DeClutter Services offer
a tailored service
to suit your needs

EMBRACING PILATES

PILATES CLASSES FOR ALL LEVELS!



Face-to-Face Classes

Monday, Tuesday, Wednesday and Thursday

9.30 to 10.25am and

Tuesday, 10.30 to 11.25am at

Horfield Parish Church Hall (Helliwell Room)

ALL CLASSES ONLY £5

Cost effective block bookings always available

PLEASE BOOK via

www.embracingpilates.co.uk

For more details contact Denise Dobbins

info@embracingpilates.co.uk

0117 903 0331

0784 732 2954



Bishopston Beanstalks news



We are pleased to announce we now take children from age 2.5 years!

Look out for us this term as we

take to the streets in our high-vis jackets, exploring all that our wonderful neighbourhood has to offer, from the library and greengrocers to Golden Hill allotments, where we grow veggies on our plot.

It was so lovely to welcome parents in for our recent Parent lunch. We run these termly and the children love setting the tables and sharing lunch with their families. We love seeing parents too!

Our focus this term is 'Understanding the World' – we are exploring different jobs, posting letters and hearing all about Paddington's adventures through the Unicef postcards scheme.

If you would like to visit Beanstalks please get in touch by email or phone. We look forward to welcoming you.

Email: info@bishopstonbeanstalks.co.uk
Tel: 0117 9425104

Bishopston Beanstalks Pre-School
Based on the Green Lane Road in Bishopston

Where children learn through play and flourish in a stimulating environment, cared for by skilled practitioners.

Opening times:
Monday 9am - 12pm
Tuesday 9am - 12pm
Wednesday 9am - 12pm
Thursday Closed
Friday 9am - 12pm
Term time only

Contact us for more information
0117 9425104
www.bishopstonbeanstalks.co.uk



Claremont School News

We met as a school council to decide on the news we wanted to be printed in *Bishopston Matters*. It was a close vote but we chose three of the activities going on in school to share with you.

Firstly, we wanted to tell you about our plan to raise money for the Ardagh Community Trust on Horfield Common, who are looking to apply for funding to install a fully accessible bathroom with a hoist. We held a Dance Day event on 11 November, with a massive conga and we danced all day long. Henleaze Juniors and Redland Green School danced too. It was chaos and lots of fun with country dancing along with cheesy songs to keep us all moving.

We also wanted to share the news about the pantomime we had in school – it has started to get us in the mood for Christmas. We found these



words and phrases expressed our feelings about the show: it was fantastic, funny, it is cool, I like it, awesome; and a big round of applause goes to Image Musical Theatre company, for their performance of *Sword in the Stone*.

Finally, as we get ready for Christmas, we are planning a huge raffle and are busy writing letters to **local businesses to donate prizes for our school fundraiser**. Please get in touch via our school website if you would like to donate anything. Last year we had an amazing afternoon drawing the tickets out of the spinning drum with a lead teacher in charge to keep it fair. It was all over zoom and very exciting calling out the winners. We can't wait to do it again!

Happy Christmas to everyone!
Claremont School Council

Bristol Grammar School

Life changing

Apply now for a place in Reception from September 2023

Call Catherine Ball on 0117 933 9631

My Community Bristol – 2022 and beyond...



Over the last year the 'My Community Bristol' team have chatted with over 500 local people and professionals about what the community means to them, what the best bits are, and

how it could become an even better area for people with a learning disability (and everyone in the community) to live a happy and healthy life.

If you'd like to share your thoughts, you can get in touch or complete the online community questionnaire here: <https://forms.office.com/r/Gxg8vh5smP> This questionnaire is also available in Somali, Urdu, Polish, and Punjabi, please contact us for the relevant link (contact details below).

An Action Group of passionate local people, with and without a learning disability, have come together to make positive change in the community. They are driving the plans for future action, as well as looking at local ideas and requests for the My Community seed funding. New Action Group members are always welcome, just get in touch!

The first seed funding payments have been made to the community to support their initiatives. **If you have an idea for your community and need any support or funding**, take a look at the funding outline here: <https://tinyurl.com/f9b7edbt> or contact us directly to have a chat.

Following the success of the My Community Celebration event in September, and by popular

Keep fit with Dance Moves

Horfield Baptist Church, BS7 8NY

Tuesdays, 10.15–11.15am

& St Peter's Church, Filton, BS34 7BQ

Tuesdays, 2–3pm

Improve your mobility, strength, co-ordination and general wellbeing whilst having fun and making new friends. Suitable for all ages.

Try first session for free!

For further information contact Eileen Scott,
T: 07969 929 733 / E: scotttyartois@hotmail.com



demand, the Action Group has begun thinking about organising further events in 2023. Watch this space... and get in touch if you want to get involved!

If you'd like to talk to Community Partners, Alice and Jess, about any of the above, please give us a call on **07890 043 455 (Alice) | 07816 295 082 (Jess)** or email us at mycommunity.bristol@mencap.org.uk

Merry Christmas from all of us at My Community Bristol!

Local & online tutor for children aged 6–11

Horfield resident Liz Romero



I am a qualified Primary School teacher working part-time at Our Lady of the Rosary, Lawrence Weston.

I have also been a class teacher at Westbury Park, St Mary's, Bradley Stoke and St Bonaventure's.

I love helping children to grow in confidence and my teaching style is positive and warm but focused.

As well as boosting children generally in English and Maths, I can also prepare children for entrance exams.

I am happy to tutor local children in their homes or online. I am fully DBS checked and can provide references from parents of current students. My terms and rates are reasonable and flexible.

Please call me on 07824 700439 or email me at eromerotutor@gmail.com

News from St Bons!



Christmas is coming! We are so looking forward to being able to hold our Reception and Key Stage 1 nativity performances to full audiences in early December. The children have been rehearsing hard – it's always such a joy to see them up on

stage, delighting parents, carers and grandparents.

Our Key Stage 2 children will be performing a carol service in St Bonaventure's Church which again, we are really looking forward to.

This term, we have been working with the children on our whole school theme of Love Thy Neighbour. As part of their response to this, two of our year 6 children – Michael and Lewis – arranged to collect donations of food for the Church's food pantry.

Our year 3 pupils will also be saying thank you to the residents of Egerton Road who have provided food for the St Bon's food pantry, by inviting them in to school for a celebratory tea and cake with the children.



63rd Bristol Scouts Remembrance parade and service in St Andrew's Park on Sunday 13 November 2022



ST BONAVENTURE'S CATHOLIC PRIMARY SCHOOL

Striving to be the best we can,
guided by the light of Christ

OPEN DAYS FOR RECEPTION SEPTEMBER 2023

We would be delighted if you could join us for one of our Open Day tours for prospective parents. For dates see our website – Admissions / Open Days section



Email: admissions.stbonaventures@bristol-schools.uk | Visit: stbonsuk | Tel: 0117 353 2830

All are welcome at St Bonaventure's

News from Ardagh Community Trust

Crowdfunder news – We are absolutely delighted to report that our recent Crowdfunder campaign has been successful! We are cock-a-hoop that we can now install basketball nets in one of the sports courts as well as continuing the vital paths maintenance to enable the Ardagh site to remain open for everyone to enjoy. Our sincere thanks to everyone who has donated, supported, and shared this far and wide. However, it doesn't end there – the Crowdfunder is still active for additional donations. Further funds would enable ACT to provide a Changing Places facility offering a completely accessible space for visitors to the Ardagh site. To see the latest on this please visit: www.crowdfunder.co.uk. Click on 'Explore' then type 'Ardagh' in the search box. Thank you for your continued support with this campaign.

Co-op Community Fund Causes – We are proud to be one of the Co-op Community Fund Causes for our local stores on Gloucester Road. Thank you to all Co-op customers who have chosen us as their local cause. Fiona, one of our trustees, was delighted to accept a cheque from colleagues at the Glos Rd store on behalf of ACT to support our work to improve spaces for play on site!

Massive thanks to brilliant community champion, Ruth Laugherne, and her team for their support for ACT since day one.

If you are a Co-op member, please log in to your account online and choose us as your favourite cause – 2p in every £ spent on Co-op goods is donated to the community fund and we will receive more based on the number of members who choose us.

See: <https://www.coop.co.uk/local-causes> for more information on this and to log in to your account

Halloween event – The Halloween party and parade at The Ardagh was just stunning! Awesome fire and light performances from The Invisible Circus were spectacular and enjoyed by the many people who attended and supported the event. Food, music and fancy dress helped the evening go with a swing.



We look forward to working in partnership with The Invisible Circus for future events.

December activities – In addition to our regular activities we also have a variety of events happening during December.

1–21 Dec – Letters to Santa – Our very own Ardagh postal service provides you with a special stamp and postcard for £1, available from the café. You will receive a personalised reply from one of Santa's elves. Don't leave it too late – they're very busy in December!

Saturday 3 – Build to Give AND Christmas lights switch on – We are continuing our tradition of building Christmas decorations from Lego to help decorate the Ardagh Christmas tree. For every decoration made Lego will donate a pack of Lego to a child in need. Come to the Garden Room between 10am and 1pm to join in the fun.

Later on Saturday we will be lighting up the Ardagh to encourage some festive cheer! Mince pies, mulled wine and cider will be available to buy to help keep you warm. This event is from 3pm to 5pm with the lights switch-on planned for 4.30pm.

Tuesday 6 – Garden Winter Fair, 10.00am – 1.00pm – Our ACT gardening volunteers will be selling an array of plants, Christmas wreaths and other goodies made from the gardens at The Ardagh. All proceeds go to ACT to continue improvements to the site. Arrive early for a bargain, the sales are always popular.

Saturday 10 – Christmas Craft Fair, 10.00am – 2.00pm – A wide range of homemade crafts from local makers will be available in the Garden Room and café. From jewellery to hand-dyed yarn, bags, soaps, cards and much more! Most sellers will be cash only so bring your pennies and support local makers.

Wednesday 14 – Move to Your Mood – Come and join a fun session of uplifting and informal movement and dance. Meet on Court 8 under the canopy. Free event, all welcome.

Wednesday 21 – Carols on the Common, 4–5pm – Join us for a festive atmosphere, local musicians, and lots of good cheer with friends and neighbours. The café will be open for mince pies, hot chocolate and mulled wine. Donations welcome!

ACT regular activities and events

Gardening and site maintenance volunteering groups – Tuesdays and Thursdays from 10am to 1.00pm. Email hello@theardagh.com or call in and ask on site.



Bristol Bears Rugby and Bristol Waste Company tidying up Horfield Common



Please choose ACT as your favourite Co-op cause

Tai Chi on Court 2 – Tuesdays (10am, 11am) and Fridays (10.30am) Sessions are delivered by volunteers from Bristol Age UK.

Family Food Action – The Ardagh every Tuesday from 10.30am to 12.30pm ready to receive and sort donations of food and toiletries.

Interactive live music sessions – Tuesday mornings from 10.00am for babies and toddlers, delivered by Rock Out Baby Bristol www.rockoutbaby.com

Horfield Common Young Explorers sessions – Thursday mornings in the Wild Play Area from 10.00am. Run by Hideaway Forest School www.hideawayforest.com/pre-school-young-explorers

No Horfield Common Litter Pick group in December, back in January 2023.

Our Horfield Common Repair Café is taking a well-earned break over the colder winter months. Thanks to everyone who has supported this so far; we look forward to being back in 2023.

Winter timings – The Ardagh site is open from 9.00am to 5.30pm during the winter. The Café on the Common is open from 10.00am to 4.30pm. Last bookings for hired spaces and sports courts finish at 5.00pm. The Café on the Common will be closed on Christmas Day, Boxing Day and New Year's Day.

Into 2023 – As 2022 draws to a close we have looked back at some of the events and activities over the past year. From craft fairs, plant sales, cream teas

and Easter trails in spring, to the Platinum Jubilee weekend, BBQs, Horfield Common Dog Show, food pop-ups and Horfield Common in Bloom during the summer. Working with so many volunteers and community groups to provide activities for everyone including Misfits, My Community Bristol, Claremont School, Ashley Down College, Invisible Circus, the list goes on.

ACT Trustees are now working on **plans for further regeneration of the Ardagh site. But we need your help.** We are sending out a community consultation at the beginning of December to gauge your opinion on how best to develop the Ardagh site. We need your feedback to help us move forward into 2023 and ensure that we are developing the site for the best possible outcomes for the community. Keep an eye on our social media for the link to the survey and let us know what you would like for your Ardagh. Please contact hello@theardagh.com if you have any questions regarding the survey.

We are excited for 2023 and the opportunity to develop more areas of the site to enable even more community involvement for the benefit of all. Thank you for your wonderful ongoing support, we wish you a happy, healthy and peaceful Christmas and New Year.

E: hello@theardagh.com | theardagh.com

f t TheArdagh

Alpine Landscaping

Established Family Firm with over 30 years' experience

Senior Citizens Special Rates

- Garden Clearance - Regular or One Off
- Patios
- Fencing
- Tree Work
- Turfing
- Hedgecutting
- Planting (Shrubs etc)
- Organic Manure Delivered - Also applied
- Professional and Guarantee Work
- Brick and Blocklaying

Call Joe for a Free Quote 0117 959 2143 / 07891 253 122

www.alpine-landscaping.co.uk

25% Off
with this advert!



LEE'S CARPETS

EST. 1957

A family run business serving Bristol for 50 years. Extensive range of carpets, laminate & vinyl flooring. Our own team of carpet fitters are on hand to professionally supply and fit your new flooring.

Visits to showroom are currently by appointment only, please call to book in.

Tel: 0117 951 4262

5 Muller Road, Horfield, BS7 0AB

Open: Mon, Tues, Thurs, Fri: 9.15AM – 5PM
Weds: 9.15AM – 12.30PM, Sat – 9.30AM – 4PM, Sun – Closed

D.C.L MOTORS

Mechanical Repairs • Welding • Servicing • M.O.T Work

- Full M.O.T service
- Top quality car maintenance and repairs
- All makes and models
- Great value prices
- Hundreds of satisfied local customers
- Workshop set up to facilitate small vans
- Servicing cars since 1997
- Owned and managed by Dave Lovell with over 30 years experience
- Local, family business



You can rely on us to do whatever it takes to get the job done!



Open:

8.30am – 5.30pm Monday to Thursday
8.30am – 4.30pm Friday

Tel: 0117 908 0081

138 Gloucester Road (although situated at the bottom of Egerton Road), Bishopston, BS7 8NT



Drought Tolerant Gravel Gardens

This summer, for the first time in recorded history we saw temperatures exceed 40 degrees in the United Kingdom, with temperatures very close to that in 2019. The parks and gardens across Bristol and the rest of the country became dry and dusty, with fires breaking out spontaneously in the countryside's fields due to the extreme heat.

Occasional thunderous, heavy downpours couldn't penetrate the dried, cracked soil of the land, creating flash flooding and problems for infrastructure. Hosepipe bans were put in place in some parts of the country, with government adverts on lessening personal water usage aired.

We are told that by 2050, 35 degree temperatures will be commonplace in the South of England, with airport runways melting, electrical problems for our train lines and roads buckling. Our gardens will also feel the impact unless we alter the way that we create them.

Gravel gardens can be created in spaces large and small, on poor free-draining soil, making them the perfect idea for gardens that have lots of builders rubble in them. Due to this, you don't need to bring in additional compost to add nutrients to the soil, which cuts down on the inputs for your garden.

Once watered in during the planting stage, if using sun loving, drought tolerant plants you shouldn't need to irrigate them going forward.

There are a huge variety of plants that are great for gravel gardens. Use Euphorbia as evergreen, structural anchor points around the garden, with a mixture of hardy perennials, Mediterranean herbs, and succulents. Herbs that we love using in British gardens are well suited; Lavender, Rosemary, Thyme, Oregano, Marjoram and Sage. Choose plants that will creep and spread through the gravel. Choose plants for height and colour.

Choose plants that will self seed. This will give you new plants each year, naturally dispersed around your garden. You can then decide whether to keep them or pull them out when they are small if they don't create the effect that you want. Verbena bonariensis is a fantastic plant. The airy high stems have delicate purple flowers at the top and are vigorous self seeders. They are loved by bees and butterflies, are super low maintenance and don't need to be watered.

Use plants like Phlomis (Turkish Sage), Perovskia (Russian Sage) and Cistus (Evergreen Rock Rose), with evergreen grasses like Stipa tenuissima. The pom pom flower heads of Echinops, Alliums and Eryngium (Sea Holly) work well floating alongside. Hardy exotics like Yucca and Agave look good with a mixture of succulents. The possibilities are endless; give it a try and you'll be very pleased with the results!



secret_garden_web



39 Horley Road, Sr Werburghs, Bristol

Creative Design
Hard & Soft Landscaping
Maintenance & Clearance
Hedges & Trees

0117 9092 088 or 0777 9180 855

info@secretgardenweb.co.uk

www.secretgardenweb.co.uk

Helping Hedgehogs

The population of wild hedgehogs is declining rapidly with a loss of their natural habitat as well as a huge loss as road kill each year. At this time of year our hedgehogs are particularly vulnerable as they prepare to hibernate and are often brought in to us by members of the public as they are found wandering and looking lost and sad.

Hedgehogs usually hibernate between November and March. Juveniles need to reach a minimum weight of 600g to be able to survive the winter. Any small hedgehog found at this time of year should be taken to a vet for a check up to decide on the best way to proceed and care for them.

Slightly underweight juveniles can be housed in a garage or shed as a temporary home using a cardboard box with hay, newspaper or leaves until they reach the necessary weight for release and hibernation. Care should be taken to avoid too much human contact to avoid the hedgehog becoming unnaturally tame.

Hedgehogs wake up periodically throughout their hibernation to find food so a supply of dry cat or dog biscuits close to the hibernation nest is a good idea to help them.

It is not normal to see adult hedgehogs out during the day as they are nocturnal. Often this is a sign of a problem so take it to the vet for a check up.

You cannot usually persuade a hedgehog to live entirely in your garden; they travel up to two miles each night and are great climbers. However, there are some things that you can do to make your garden more attractive to hedgehogs to encourage them to stay around.

Leave areas of your garden wild with piles of leaves and logs. These will provide an attractive nest as well as a source of food in the form of slugs, worms and beetles. A piece of wood against a wall can be used by a hedgehog to climb over and you can provide a hedgehog house, homemade or bought.

Leaving out fresh food and water will encourage hedgehogs to return. Use tinned cat or dog food (not fish flavoured) or dry biscuits. Food formulated for hedgehogs is also available from pet shops.

Never feed hedgehogs milk as it can cause a diarrhoea; instead supply water in a shallow bowl.

Remove all plant netting or sports netting when not in use to prevent a hedgehog from becoming entangled and injured. Make sure there is an easy way out of ponds, hedgehogs are good swimmers but need to be able to easily climb out of the water. Cover drains



Above: A family of 5 orphans Nicky rescued earlier this year, all now happily grown up and released.

and holes. Check compost heaps before forking over and grass before mowing or strimming. Do not use slug pellets that may harm hedgehogs.

Bonfires should be freshly made up before lighting, if not, do check thoroughly for any hedgehog that may have crept into the base.

If you do find a hedgehog please do contact us for advice and if necessary we can advise about transfer to a suitable hedgehog rescue for further care.

The more we can do to help these wonderful creatures, the greater their chance of survival both individually and as a species.

Nicky Bromhall MRCVS

Head vet at Animal Health Centre

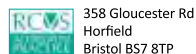


Animal Health Centre

"A passion for pet care"

- Nicky and her team have been providing expert, friendly and dedicated care since 2002
- A welcoming and relaxing atmosphere
- Free preventative health clinics for your pet
- Modern surgical, x-ray and dentistry facilities

"Absolutely amazed by the service. Wonderful, knowledgeable people."



358 Gloucester Rd
Horfield
Bristol BS7 8TP
0117 924 7832
www.animalhealthcentre.org

Your local, friendly veterinary practice

News from the Goldenhill Community Garden

Hi everyone,

Season's greetings from the winter garden!

But we don't stop when the weather gets cold – our fab team of volunteers are here every Wednesday – chopping, chatting, weeding, sawing, building, painting, making, planning, drinking tea and munching biscuits...or staying cosy and dry in our eco Balehouse.

We are open every Wednesday, 10am–4pm

(though in January and December we close at 3 o'clock instead of 4 and we're closed Wednesday 28 December). Also, we're well into soup season now so if you fancy coming along to help, then we aim to have steaming hot soup from the garden every Wednesday at 1pm. Delicious leek and potato! Warming spicy parsnip! Or maybe we'll attempt something more adventurous like mooli and sorrel!

If it's your first time visiting, please come at 12pm or 2.30pm for a tour and a chat and then after that you can drop in any time from 10am to 4pm. You don't need to come every week or stay all day; no experience necessary. We've always got a range of jobs to suit different energy levels and preferences and together we get it all done.

We also run our **toddler groups and after school club year-round** – whatever the weather! The

temperature can drop like a stone as soon as the sun goes down but our hardy afterschool club kids are often unfazed by freezing rains or wind. We make sure we keep the fire going inside and have hand warmers and emergency hot water bottles at the ready. We are also here in the dark! Kids don't really spend much time outside when it's dark so it's great to see them get really excited by the moon and night sky. And as the darkness falls slowly around them as they play it's much less scary than stepping out from a brightly lit house and all sorts of games evolve.

Finally, we might have a few spots left on our **Wreath-making day on Saturday 3 December**. Check our website for details.

See you in the garden!

Lucy

www.thegoldenhillcommunitygarden.com

Facebook: [TheGoldenHillCommunityGarden](https://www.facebook.com/TheGoldenHillCommunityGarden)



Rent the Coni pizza oven on a Tuesday, Wednesday or Thursday and we'll include 2x free pizza dough bases, freshly-made by the folks at The Dough Kitchen.

Lownit.co.uk

DIY - Kitchen - Garden - Entertainment - Home



WILD

wildlife friendly gardening

- Garden maintenance
- Soft landscaping planting & plans
- Ponds
- Wildlife and climate gardening advice
- Based locally in BS7

wild-gardening.co.uk



hello@wild-gardening.co.uk

Ring Nik: 07891 119327

Windsor Road Garage

Family business est 1964



*Serving our community
for over 50 years!*

- Car Servicing • MOT Testing
- Vehicle Repairs
- Classic Car Maintenance
- AA accredited garage

Get in touch with this trusted,
friendly team, to book in
call 0117 924 7113.

Open Mon – Fri: 8.30 to 17.30,
Sat 9.00 to 12.00.

Windsor Road Garage, Windsor Rd,
St Andrews, Bristol, BS6 5BP

www.windsorroad.co.uk

*Now equipped to service the new
1234yf Air Con Gas*



ALL GARDENS



SMALL GARDEN SPECIALISTS
25 YEARS EXPERIENCE
BASED IN BISHOPSTON

Phone Pete 0117 9421 685

e-mail peter@allgardens.co.uk

visit www.allgardens.co.uk

All Garden Craft DESIGN

- Garden Clearance and Maintenance
- Garden Make-overs
- New Lawns
- Fences/stone walls
- Patios & Decking
- Ponds
- Tree pruning

Shrinking Horfield

BHA local history research – Andy Buchan ©



Holy Trinity Church Horfield
(Horfield Parish Church)

South from Gypsy Patch Lane to Zetland Road.

At some point after the conquest and before 1148, the first split occurred, when Filton became a parish in its own right.

And so things remained for the next 700 years. Horfield carried on as a scattered rural parish, with a population of perhaps 200 people, the majority of whom had jobs connected with agriculture. But the city of Bristol was growing and expanding and people living and working in the city, were increasingly choosing to live outside of the city in neighbouring parishes. One example was a retired family who moved from Kingsdown to a newly built house on Gloucester Road, near Nevil Road.

The next change occurred in January 1845 when the new parish of St Andrew, Montpelier was created, partly out of Horfield and partly out of St Paul's parishes. That this change had long been planned may be evidenced by the fact that the church was already built. This church was bigger, longer, and wider, than Horfield parish church even after its second enlargement in 1847. This was the prelude to the later formation of Bishopston.

This and the later change occurred because houses had begun to be built in the southern part of Horfield, some distance from the parish church and the scattering of farms in the immediate surrounding



St Andrews, Montpelier

The history of Horfield is one of a shrinking parish; before the Norman conquest in 1066, the parish of Horfield included Filton and stretched North to

area. As far as is known Horfield has never had a nuclear or linear village centre, but appears to have had clusters of farms, with some surrounding workers houses, for example at Downend. That the population of Horfield was increasing as the 19th century drew on may be seen in the enlargements to Horfield parish church that occurred in 1836 and again in 1847. The censuses for Horfield from 1841 to 1871, show that employment in Horfield – at least the northern part – revolved around agriculture and related occupations. Gradually the occupations that people declared suggest that more were working in the city or the adjacent suburbs.

In 1862 came the next major change, when the bottom part of the parish of Horfield, together with parts of the parishes of St Andrews and Stapleton, were brought together to form the new parish of Bishopston.

This took a smaller area than the split with Filton but took the majority of the population.

This change was brought about because, not only was Horfield parish church too small, but the bulk of the people now lived too far from the church.

Maps from the second half of the 19th century show that, between 1850 and 1880, many of the roads and houses we would recognise today in 'Bishopston' had been built, while in Horfield besides housing going up Gloucester Road to Ashley Down Road, there was only limited development. Linear development up Gloucester Road continued but did not expand east and west until later.

How rural, and lacking services/facilities the heart of old Horfield was, may be shown by an accident which occurred in 1874; the doctor had to come from Cotham and the police also came from elsewhere, because there was no police station. There is a police house shown in Horfield after 1894, and there is said to have been a police house in Bishopston, but there is none shown on pre-1900 maps, that I have found.



St. Michael & All Angels Church, Bishopston

News from Bishopston & Ashley Down and Redland Councillors



Lily & Emma

Bishopston & Ashley Down ward

As we move into the winter months we have been as busy as ever working with local residents and the council on issues in the ward. In October we had success getting the council to re-evaluate the number of HMOs in the ward after residents in Oak Road raised concerns. It turned out the data was incorrect and this has helped with dealing with objecting to the planning application. A big thanks to all residents who got involved. We also finally got the council to repaint the road markings at the end of Kennington Avenue. We know this issue was going on for a while, due to poor road resurfacing, hot weather and parked cars. We are pleased to say the new lines are now there and are looking good.

Parking issues – At November's members' full council Emma once again brought a question about the possibility of getting a residents' parking zone for the area. Sadly, once again Emma was told that there will not be any more residents' parking schemes issued under this administration. However, on a more positive note, Emma has recently launched a petition on banning pavement parking in Bristol, in a scheme similar to one that has been implemented in Sheffield. We know that people find pavement parking anti-social and want more action on it. If you want to support this petition you can sign it by following this link: <https://actionnetwork.org/petitions/pavement-parking>

Ashley Down speeding – We've had lots of residents contacting us about concerns about speeding in the area, especially on Downend Road, Ashley Down Road and Sommerville Road. We have met with the local police liaison officer to discuss this issue and find solutions. The police have issued more police speed vans in response and have had some positive responses. They have also said that residents can get involved by

signing up for Community Speed Watch, where you can use speed guns on your own streets to monitor speeding. CommunitySpeedWatch@avonandsomerset.police.uk

Pencil bollards – We are also pleased to announce that we had our Area 2 Community Interest Levy meeting and were able to take forward the bid for Ashley Down School for some pencil bollards. This means that we are one more step forward to tightening up the safety around this school.

The New Clean Air Zone – Bristol's Clean Air Zone portal is now open which means anyone who is eligible can apply for a temporary exemption to the Clean Air Zone charge. If you want to find out if your vehicle is exempt, you can visit <https://secure.mipermits.com/bristolcaz/Application/ModuleLander.aspx>.

Over 71% of vehicles are already compliant, so, many residents and businesses will not need a temporary exemption. We urge people to check whether their vehicle will be charged using the government's online checker.

Cllr Emma Edwards, Green Party
cllr.emma.edwards@bristol.gov.uk

Councillor Lily Fitzgibbon, Green Party
Cllr.Lily.Fitzgibbon@bristol.gov.uk

Facebook: [EmmaEdwardsLilyFitzGibbon](#)

Redland ward

Bishop Road traffic issues – Following concerns raised by residents and parents in the area, Fi and Martin have been in touch with Bishop Road School to see if we can work together to improve road safety around their site. It's a local road we get a lot of reports about. It is clear that congestion, inconsiderate parking and inappropriate speeds are worrying local people and although council budgets are very tight, we are hoping that there may be a way forward. Ideas and comments are of course very welcome – do please get in touch.

Maintaining local drains and hedges – With a late autumn, we're now seeing plenty of issues around blocked drains and overgrown hedges. Please remember to play your part and report drains that need clearing via the council website. If there are accumulated leaves and you're able to remove them then please do as it can help keep pavements clear and safe. And if you haven't yet cut back any overhanging hedges or shrubs then please tidy them. If there's a neighbour who isn't able to look

after their own garden then an offer to help might be really welcome.

Grim prospects for council budget – After many years of government austerity, the city council budget has been shrunk by about a half and many services have already suffered cuts the last few years. The bad news is the coming year's budget is facing a shortfall of frightening proportions. By law the budget must balance and, with income from many local sources and the government allocation shrinking, the funds will also be under pressure from inflation in costs, rising social care demands, staff pay rises, and steep energy bill increases. Some of the current year's savings have also not been achieved. This means some extremely difficult choices will have to be made around the amount for each service in the next municipal year. Do look out for the budget consultation and do feed in your comments.

Redland Green fountain making progress – The long-awaited fountain for Redland Green users looks a little closer to reality. A new water supply pipe is being provided and this means the fountain may be able to be installed in time for the next year.

Energy efficiency advice – With rocketing energy costs many of us are worried about escalating bills and keeping warm through winter. You can find advice here: www.cse.org.uk/advice. Tailored help is also available from the warmer homes advice and money service, WHAM. It provides support for anyone who might be struggling to afford to heat their homes with caseworkers from partner organisations co-ordinating the support for clients. There's a referral form – <http://www.cse.org.uk/referral> – and free phone number: 0800 082 2234. There is unfortunately a waiting list. Basic energy saving tips can be found here: <https://bristolenergynetwork.org/> via the home page.



Coffee Cakes and Chat

Bishopston Methodist Church,
245 Gloucester Road, BS7 8NY,
invite you to join them for **coffee, cake and a chat.**

There will also be a chance to buy home made cakes and other items on Saturday

3 December 2022
10.30 am to 12 noon

Hope to see you there!



Martin & Fi

Of course, we wish there was also a national energy saving programme available from the government to offer everyone support for a warmer home.

Supporting food banks – We know there are steep rises in the cost of food. Thanks to everyone supporting or volunteering at local food banks – they are hard pressed to keep up with demand just now. If you can help support Bristol Local Food Fund through their crowdfunder, please visit their appeal here: <https://www.crowdfunder.co.uk/p/blff>. The fund offers grants to those in need.

Clean Air Zone starts charging – The city's statutory clean air zone is due to start on 28 November, after many years of delays to get less toxic, safer air. There will be charges for non-compliant vehicles – if you have a vehicle registered locally you should have been contacted. See the website – www.cleanairforbristol.org – where you can check details and see the support packages available.

Fi Hance, Green Party
cllr.fi.hance@bristol.gov.uk / 0117 3534720

Martin Fodor, Green Party
cllr.martin.fodor@bristol.gov.uk / 07884 736101

Facebook.com/cllrmartin.fodor or /cllrfi.hance

Circle Dance Evenings

At The Old Library, led by Susannah Temple
December 27 December, 7.30–9.30pm.

A gentle celebration of the turning of the year, enjoy music from different countries. Beginners are welcome and you don't need to have a partner. Great variety of dances, from peaceful to lively. Welcome to you all! Susannah teaches as they go along, so you can pick it up gradually. Wear soft shoes or bare feet. Light refreshments provided. Cost: £5 (or more if possible) to cover expenses and support The Old Library.



For more info contact Susannah:
0117 979 1519
susannah temple@googlemail.com



TREE SURGERY - PRUNING AND REMOVALS
SHRUB PRUNING AND HEDGE CUTTING
TREE REPORTS AND SURVEYS

NUTHATCH

TREE MANAGEMENT & CONSULTANCY
www.nuthatchtrees.co.uk

Contact us for a free consultation
tel: 07866980012 email: rich@nuthatchtrees.co.uk



DCL

DOORS & WINDOWS

Doors

- Composite Entrance • Bifolds • French/Sliding

Windows

- U-PVC • Aluminium • Sash • Cladding
- Glass Replacement • Fascias & Guttering

07960 097 170
Enquiries@dcldoorsandwindows.co.uk
<https://www.dcldoorsandwindows.co.uk>

 A GGF Group Company



PEAR TREE FURNITURE

Made to measure alcove cupboards and shelves

Under stairs storage units and doors

TV and music system units

Bespoke furniture projects

For an honest, free and friendly quote contact Rich

07976 209 305 / 0117 9500 597
Rppeartree@gmail.com

Based in Bishopston



From a single tile to a whole roof, all build and roof works undertaken, pitched and flat.

ROOF-TECH
Bristol

We have over 20 years experience are fully insured and all work is guaranteed.

For a FREE, no obligation quote and roof survey, just give us a call.

Office: **0117 3126457** Mobiles: **Ben Peters: 07724 681620** or **Steve Coles: 07724 639830**
E-mail: roof-tech@hotmail.com



Stephen Carter
Painter & Decorator
Professional Decorating Services

Painting & Decorating Association Accredited (with PDA guarantee)

For a free competitive quotation:
07786 513788 or **0117 907 6997**
Cranside Avenue, Redland BS6 7RA
carterdecoratingltd.co.uk



EXPAND BUILDING

High Quality Construction

Expand Building is a Bristol based building company with an excellent reputation. Delivering high quality construction.

Find out more www.expandbuilding.co.uk **0117 959 1777**

We specialise in: high specification extensions

 07813 328 387 |  07972 577 827 | email: info@expandbuilding.co.uk

Expand Building, 124 Falcondale Road, Westbury on Trym, Bristol BS9 3JD | Company Registration No. 7933161

Price Glass

WINDOWS • DOORS • CONSERVATORIES

FENSA registered

10 year insurance backed guarantee on all Doors & Windows

Established 1973

- PVC, ALUMINIUM & HARDWOOD WINDOWS & DOORS
- SLIDING SASH WINDOWS
- BI-FOLDING DOORS
- FRENCH & PATIO DOORS
- SECONDARY GLAZING
- CONSERVATORIES
- BESPOKE GLAZING SERVICE
- GLASS CUT TO SIZE
- LEADED LIGHTS
- COLOURED SPLASHBACKS

Call - 0800 975 7967 | www.bristol-doubleglazing.co.uk



office@priceglassbristol.co.uk
Price Glass and Glazing Bristol

Visit our
showroom at
4-6 Ashley Down Road
Bristol, BS7 9JW

OPENING HOURS

Monday to Friday
8.00am – 5.00pm
Saturday 8.00am – 1.00pm
Sunday Closed



Useful Trades & Services for the Home & Garden

Brickwork

by Denise Howard

Decorative Brickwork

different colours, patterns, features and structures

Bespoke Designs

in both reclaimed and new bricks

Walls Repointed, Restored and Rebuilt

including complete walls, small areas, minor repairs, missing bricks and patios

Lime or cement based mortars used

Locally based in Bishopston/Horfield

Liabilities Insurance held
References available

City & Guilds Advanced Construction
Award - Brickwork - Distinction

t: 0117 9249166 or 07710 827467

e: brickworkbydenise@gmail.com



ROB'S PROPERTY MAINTENANCE & CLEANING SERVICES



For all those jobs that
still need doing...
I am here to help!

Building & Property
Maintenance
Handyman
Plastering • Rendering
Decorating • Tiling
Plumbing • Bathrooms
Fascia/Guttering
Gardening/Fencing
Private & commercial cleaning

ROB: 07891 450 047

robspropertymaintenance@yahoo.com

From £895*
for a fully fitted electric garage door.

Gotta get a Garolla.

Garolla garage doors are expertly made to measure in our own UK factories, they're strong and solidly built. The electric Garolla door rolls up vertically, taking up only 8 inches inside your garage, maximising valuable space. Our expert local installers will fit your new door and they'll take away the old one too, so there's no mess.

Give us a call today and we'll come and measure up **FREE** of charge.

GAROLLA
ROLLER SHUTTER DOORS
www.garolla.co.uk

CALL US TODAY ON:
01454 740 086
MOBILE:
07537 149 128

LINES OPEN 7 DAYS A WEEK

Trustpilot
4.8 out of 5 (Over 3,000+ reviews)

*Offer valid for openings up to 2.4m wide & including 2 remote controls, 55mm white slats, internal manual



INDOOR SELF STORAGE HORFIELD AND LOCKLEAZE

WWW.STASHEDAWAY.CO.UK

Stashed Away, 91a Romney Avenue, Bristol, BS7 9ST
01179 516325 7am – 7pm, 7 days a week

Electrical and Plumbing



All electrical work - from complete rewire to additional sockets
Domestic plumbing and tiling - showers, underfloor heating etc.
City & Guilds and NVQ. Part P compliant.

Free estimates - Call to discuss your requirements

Matt Pederick – 07958 753588



WWW.BS7GARDENSERVICES.UK

BS7
Garden Services

Tel: 07599 464109

- Lawn mowing
- Garden clearance
- Small jobs
- Public liability insured
- Hedge Cutting
- Pruning
- Planting Borders
- Pressure washing

For more Tel: 07599 464109
info: Email: bs7gardenservices@gmail.com

M.W
**PROPERTY MAINTENANCE
BUILDING & DECORATING SERVICES**

Interior & Exterior Painting & Decorating
Extensions | Loft conversions | Roofing
Bristol based | 25 years experience
Fully insured | References available

For all projects call
Mike: 07989 507143 or Terry: 07762 316376

MD Aerials
Call Michael Dagger

T: 01454 418 341 M: 07817 304 236
mike@mdaerials.co.uk www.mdaerials.co.uk

All types of aerial and satellite work undertaken including:

- Aerial Installations
- Reception problems
- Additional room feeds
- TV wall mounting
- Setting up and tuning
- CCTV
- Wi-Fi access points
- Free Quotations

Over 30 years experience



**Natural
BORN FLOORING**

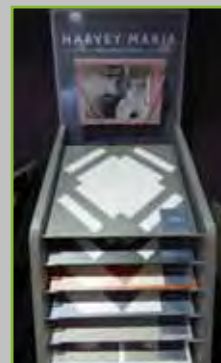


01179 427829

Natural Born Flooring
203 Gloucester Road
Bristol, BS7 8NN

Customer parking at the rear of the shop
www.naturalbornflooring.co.uk

MARMOLEUM • KARNDÉAN • CARPETS & VINYL
COIR • WOOD & BAMBOO SISAL • RUBBER & LEATHER
CUSTOM RUGS & RUNNERS • SEAGRASS



It is great this family business has remained busy during these challenging times. When I last spoke with owners Colin and Ross they told me they have now been on our high street for nine years! They both still very much enjoy being a part of the Gloucester Road community and thank their local customers for their ongoing support.

Their impressive showroom runs over three floors – downstairs is dedicated to real wood, parquet and engineered oak flooring.

The rear showroom displays stylish, luxury vinyl tiles, perfect for all areas of the house with brands such as – Amtico, Karndean, Distinctive, Polyflor and Harvey Maria – who have a fabulous new range on display at the showroom.

The ground floor is home to an extensive range of quality carpets rugs and runners, both of natural and synthetic fibres. Ross has been busy installing the new distressed wooden panels that display beautifully the diverse ranges of gorgeous carpets they have on offer.

Natural Born Flooring's team are highly experienced and offer a friendly service, focusing on exceptional quality installations, using only the highest standard of products at competitive prices.

The Natural Born Flooring team would like to wish their customers a very Merry Christmas and happy New Year! They look forward to working on your exciting flooring projects in 2023!

Call today for a free consultation on 01179 427829
203 Gloucester Road, Bishopston, BS7 8NN
www.naturalbornflooring.co.uk
Customer parking to the rear of the shop





**DOMESTIC
INSTALLATION
SPECIALISTS**

DESIGN • INSTALL • MAINTAIN

www.redlandelectricalservices.co.uk
alex@redlandelectricalservices.co.uk

07955 725 307




Free quotes Fully insured

Pruning Hedge Trimming
Felling Stump Grinding Planting

All work considered All waste recycled
Friendly and professional service

0752 591 6882 0117 965 8399
info@collinstreeservices.co.uk

Home Improvement & Repairs

Small repair & maintenance jobs.
Larger projects also done.

Kitchens - Bathrooms - Plumbing - Electrical - Roofing
Painting & Decorating, Gardening Services etc.
Clean, tidy, trustworthy, experienced & reliable.
Reasonable rates & references available.
Co-ordinated team of trades people... local, small
& friendly!.....Contact us for a free estimate on:

Mobile: 07966 291323
Email: homefixweb@blueyonder.co.uk
HOMEFIX www.homefixweb.co.uk



**The
Roofing Company**

- Tiling & Slating
- Lead Work
- GRP Roofing Systems
- UPVC Fascias & Guttering
- Roof Carpentry

Free no obligation quotations
Competitive Pricing

0117 950 2610

E-mail: info@theroofingcompanybristol.co.uk
 Unit 1, 'Perrocot', Hallen Rd, Bristol, BS10 7RP




BRISTOL BUILDING COMPANY
Quality Building Solutions

- Extensions
- Kitchens
- Bathrooms
- Roofing
- Electrics
- Plumbing
- Refurbishment
- References available

Locally based, family-run, established for over 35 years

"My tired old house has been transformed into a fantastic home for my family." Joanne, Bishopston
"We have found the workmanship completed to a very high standard. I would thoroughly recommend the company to all." Mary, Horfield
"Dale's team were friendly and professional and the work was done faster than we expected, to a very high standard." Cher, Ashley Down

Tel: 0117 952 1944 Mob: 07977 116842
Email: bristolbuildingco@yahoo.co.uk
www.bristolbuildingcompany.co.uk

M^cCALL
PLASTERING SERVICES
 EST 1976

- ALL ASPECTS OF PLASTERING UNDERTAKEN
- OVER 30 YEARS EXPERIENCE
- INTERIOR & EXTERIOR WORK
- QUALITY WORK
- COMPETITIVE RATES

Call: 0117 949 0147
07909 937 229 or 07970 596 260
mccallplastering@hotmail.co.uk



"for all your plumbing and heating needs"

"Our business has grown through reputation and recommendation, so first-class customer service is one of our top priorities"



- Gas Safe Registered
- Accredited Installers
- Up to 10 year warranty on Worcester Boilers
- 0% finance offered
- Excellent customer service
- Serving Bristol for over 40 years!

0117 924 7200 • www.dhs-uk.com




free quotations - serving Bristol and surrounding area

Charnick Electrical

- EV charge points
- OZEV approved
- Battery storage
- Solar PV
- LED lighting
- Smart controls
- Sustainable technologies
- Design & Installation

M: 07967563298 H: 01179557227
www.charnickelectrical.co.uk
leroy@charnickelectrical.co.uk



THE AERIAL MAN
TV Aerial and Satellite Specialist
Affordable Prices - Reliable Service

- Poor Reception Problems Solved
- Digital Aerials
- Sky Work
- Humax Recorders
- Free Quotes
- Two Year Guarantee
- Additional TV Points
- TV Sales
- Repairs
- OAP Discounts

0117 967 9028
07818 413 451
www.theaerialman.co.uk



Index of Local Advertisers

Accountants / Book-keeping

Tax Assist	8
Aerials	
Dan Grace Aerials	5,61
MD Aerials	58
Architects	
Cryer & Coe Architects	12
Art & Gift shops	
Nola Interiors	17
Reason Interiors	25
Room 212	12
Buddhist Centre	
Sakya Buddhist Centre	30
Building Maintenance/Construction	
Bristol Building Company	61
Denise Howard Brickwork	57
Expand Building	55
Homefix	60
MW Decorating & Building	58
Rob's Property Maintenance	57
Cafés / Restaurants / Takeaways	
Areeshaz Dessert Café	19
Bishopston Fish Bar	4
Ritual Coffee	21
Rooster's Piri Piri	7
Carpets / Flooring	
Conran Carpets	64
Lee's Carpets	46
Natural Born Flooring	59
Car repair	
CC Motor Co	36
DCL Motors	46
Windsor Road Garage	50
Childcare	
Bishopston Beanstalks Pre School	40
Shine	6
Computers – I love my PC	26
Dental Care	
Horfield Dental Care	1,63
Digital Marketing Services	
Kettlefish Digital	5
Editorial services	
Rebecca Ramsden	39
Electricians / Electrical Shops	
Ablectrics	12
Charnick Electrical	61
Matt Pederick	58
Redland Electrical	60
Equipment hire (indoor/outdoor)	
Lown	49
Fashion / Clothes	
Billie Jean Pop Up Event	22
Financial advisors	
Harold Stephens Independent	
Financial Adviser	37

Florists / Plant shops


The Flower Shop	15
Food & Drink outlets	
FOOD SHOP	16
Grape & Grind	18
Hobbs House Bakery	3,21
Joe's Bakery	15
Scrumptiously Sweet	27
Framing – Niche	24
Furniture making	
Pear Tree Furniture	55
Garden Design / Maintenance	
All Gardens	50
Alpine Landscaping	45
BS7 Garden Services	58
Collins Trees	60
Nuthatch	54
Secret Garden	47
Wild Gardening	49
Glazing & Doors	
DCL Doors & Windows	54
Price Glass	56
Hair / Beauty	
Charlee Baker Beauty & Wellbeing	29
Horfield Dental Care	1,63
The Green Room	26
Health / Fitness / Wellbeing	
Charlee Baker Beauty & Wellbeing	29
Keep Fit with Dance Moves	42
Osna	23
Superhuman	29
Trainners	29
Heating – Gas / Elec	
Dynamic Heating Services (DHS)	60
Little Bathroom & Boiler Company	9
Holiday Clubs – Shine	10
Home de-cluttering services	
FM DeClutter Services	39
Home Interior Shops / Services	
Ablectrics	12
DHS – Bathroom Installation	61
Dream Doors	13
Little Bathroom & Boiler Company	9
Nola Interiors	17
Pearce's Hardware	23
Reason Interiors	25
International House	4
Jewellers	
AHLQ Jewellery	15
Kemps	16
Kitchen Installation / Refurbishment	
Dream Doors	13
Lettings services	
JBS Bristol Lettings	2

Martial Arts


Red Dragons Martial Arts	35
Optometrists	
Lunar Optical	31
Painting & Decorating Services	
MW Decorating & Building	58
Stephen Carter Decorating	55
Pets – care / shops	
Animal Health Centre (Vets)	48
Roxford's Pet Shop	20
Pilates	
Embracing Pilates	40
Pilates Active	30
Soul Pilates	28
Plasterer	
McCall Plastering	60
Plumber	
Matt Pederick	58
Print – Niche	24
Property services	
Homefix	60
Rob's Property Maintenance	57
Recruitment	
Sales Executive	8
Roofing	
Rooftech	55
The Roofing Company	61
Roller Shutter Doors (Garage)	
Garolla	57
Schools	
Badminton School	23
Bristol Grammar School	6,34,41
St Bonaventure's School	43
Self storage	
Stashed Away	8,58
Sewing / Fabric shop / courses	
Flo-Jo Fabrics	14
Solicitors	
Barcan+Kirby	38,39
Spanish lessons	
Pasitos	7
Tree Surgery	
Collins Trees	60
Nuthatch	54
Tuition	
Greenhouse learning	34
Liz Romero – local & online tutor	42
Vet	
Animal Health Centre	48
Waste Services	
Bristol Waste Services	11
Yoga	
Yogawest	1

EDITOR'S NOTE: Please note that we try to be as unbiased as possible in the editing of this magazine. We cannot take responsibility for anything stated by an advertiser and cannot be held responsible for misrepresentation in the adverts included. Views and opinions expressed are not necessarily those of the editor (unless it is a personal review of a service that we have participated in). We cannot vouch for every advertiser personally (although since starting this magazine we have used many of the services). Any feedback or experience is welcomed. **The Small Print!** Bishopston Matters will be distributed during the first week of every month (as far as possible) to 3,500 homes per month on a three month rotational basis (10,500 homes per quarter) covering the areas of Bishopston, Ashley Down, Horfield, St Andrews and parts of Redland. We cannot be held responsible for any inaccuracies in advertisements nor for any consequences arising from this. We are not to be held responsible for damage or loss of copy or error in printing. It is the advertiser's responsibility to ensure conformity with the Trade Descriptions Act 1975, Business Advertisements Disclosure Order 1977, Sex Discriminations Act 1975 and the Consumer Credit Act 1974. All artwork used in Bishopston Matters must not be published in any other media without our permission. Bishopston Matters is run independently but under licence from the Matters Magazine franchise. For further information on Matters Magazines see www.mattersmagazines.co.uk

© Bishopston Matters 2022



Horfield dentalcare



SMILE & FACIAL AESTHETICS

FREE ONLINE CONSULTATION

Visit www.horfielddentalcare.co.uk

New Patients Welcome

Check up including Xrays and a complimentary Cosmetic Consultation

FOR £49.95

Proudly independent dental practice. Horfield Dental Care can look after all your Dental needs including a vast range of top cosmetic dental treatments to improve your smile.

Facial Aesthetics *NEW*

Everyday dentistry

Cosmetic treatments

Smile makeovers

Dental implants

Whitening

Childrens dental care

Emergencies

Call Us Today!

0117 951 3026

Register & Book Online

www.horfielddentalcare.co.uk

info@horfielddentalcare.co.uk

Horfield Dental Care, 525 Gloucester Road, Bristol, BS7 8UG

[f](#) [t](#) [i](#)

Don't forget to mention Bishopston Matters when replying to ads!

Conran Carpets

...your next step in floor covering



▪ Carpets ▪ Rugs ▪ LVT ▪ Linoleum ▪ Vinyl ▪ Laminate ▪ Safety Flooring ▪ Coir ▪ Sisal

Bringing twenty-five years of floor covering experience to Gloucester Road, your reliable, independent, local, first-class carpet shop.

We always have full rolls in stock and on display ready for your perusal, roll stock always represents best value. Come in to buy or just to say hi, either way we would love to meet you.

- Fully certified and insured in-house fitters
- Full 'no pressure' measuring service.
- Directly dealing with all the major manufacturers
- Fully stocked showroom on your local high street
- Discount for OAP's and NHS workers

Let us be your next step in floor covering.



***Wishing our wonderful customers
a very happy Christmas and
fabulous New Year!***



***"Very Friendly and Helpful"** "What a find! Completely took the stress out of all my carpeting needs. Selection is huge, staff very friendly and helpful and a local shop!! Highly recommend."*



278–280 Gloucester Road,
Horfield, Bristol, BS7 8PD
(opposite the Post Office)

Call us on **0117 9425 770**
conrancarpetsltd@gmail.com
www.conrancarpetsltd.com
Open Mon–Sat, 10am–5pm

