

# Bishopston

## Matters

Tel: 07881 924059

issue 149, Jul/Aug 2021



Bloomin lovely at the Ardagh!



The heart of yoga in Bristol

 **yogawest**  
0117 924 3330

Yogawest is open again with social distancing in place: book your class online before you come.

**[www.yogawest.co.uk](http://www.yogawest.co.uk)**

Find us just off the Gloucester Road, along from Bishopston Hardware. See our full timetable online.  
Denmark Place, Bishopston, Bristol BS7 8NW



**invisalign**  
PROVIDER

Horfield Dental Care,  
525 Gloucester Road, Bristol, BS7 8UG



**Horfield**  
dentalcare

☎ 0117 951 3026

Register & Book Online  
[www.horfielddentalcare.co.uk](http://www.horfielddentalcare.co.uk)  
✉ [info@horfielddentalcare.co.uk](mailto:info@horfielddentalcare.co.uk)

Bishopston Matters is delivered to **10,500 different homes** per quarter across Bishopston, Ashley Down, Horfield, St Andrew's and parts of Redland

## Do you have an idea for a business or want to grow your established company?

Fully funded business training and support is available across all industries and for people with an idea for a business, charities, social enterprises, freelancers and existing businesses looking to pivot or grow.

### North and East Bristol Support

#### How we can help:

- Networking events
- 1:1 Expert advice
- Interactive e-Learning platforms
- Training and skills workshops in business planning, finance, marketing and more



Find out more or sign up for your **FREE** business support:  
[www.westofengland.ytko.com/nebs](http://www.westofengland.ytko.com/nebs)  
Get in touch: [nebs@ytko.com](mailto:nebs@ytko.com)

Delivered by

**outset**  
The business start-up experts

**GET SET**  
FOR GROWTH

North and East  
Bristol Support  
Part of **YTKO**  
GROUP



**WEST OF ENGLAND**  
Combined Authority



## Dear Readers...

Nearly 150 issues in and I have decided it was time to freshen up the front page with a few small adjustments, that I hope you approve of. The beautiful blooms pictured are from the Ardagh community gardens. You can read an interview with gardener Steve and a selection of their wonderful volunteers. This fab community spot really is worth a visit over the summer if you are not already a regular at the Common's cafe.

Staying on the theme of flowers and wildlife, we feature an article on Horfield Baptist Church creating a Beeline, ask you to spot butterflies in Bishopston, and get involved with a wild flower meadow and new tree App in St Andrew's Park.

Two local schools are harnessing the healing power of nature to assist their pupils in the recovery of the negative impact of

lockdown. St Bon's has created a stunning pop-up garden in their grounds that the whole school has been involved in. While Sefton Park has invited two gorgeous goats to be residents at their school.

Goats get a mention in our History article, where we learn all about Purdown's Heavy Anti-Aircraft Battery.

The Pantaloons theatre company will again be performing in St Andrew's Park on bank holiday Monday 30 August; do book in to enjoy an evening of quick changes and quick wit in an imaginative interpretation of Jane Austen's classic *Pride and Prejudice*.

As you can see opposite, there is free advice available to support local businesses through this challenging time; you can read one local's positive experience on page 18.

Have a fabulous summer!

**Kerry x**

Email: [kerry@bishopstonmatters.co.uk](mailto:kerry@bishopstonmatters.co.uk) • [www.bishopstonmatters.co.uk](http://www.bishopstonmatters.co.uk) Bishopston Matters  
Bishopston Matters, PO Box 337, Bristol, BS9 4WT Tel: 07881 924 059 / 0117 349 4483 @bishmatters



### NEW from Joe's Bakery

**Americana donuts** – yeast raised donuts in four mouth-watering flavours – **Double Oreo**, **Biscoff**, **Raspberry Duo** and **Caramel**, all generously filled with patisserie crème, raspberry caramel or caramel, iced and lavished in sprinkles of Oreo, Biscoff, white chocolate or fudge.

Available to buy individually or gift boxed at no extra expense. Delicious filled custard or Devon creme donuts can also be gift boxed. Perfect to order for special occasions, parties and picnics.

**Cruffins** – scrumptious butter pastry bakes with a variety of fillings – tangy rhubarb & blood orange jam (by local Bishopston Supper Club), vanilla pastry crème with a chocolate flake and Nutella.

**Olive Provencel Sourdough** – if you prefer a savoury treat, you won't get better than this new mild white sourdough, flavoured with Lavender and Herbes de Provence and studded with marinated olives. This knockout bread is soon to be entered into *Britain's Best Loaf* competition.

Joe's Bakery, 240–242 Glos Rd, BS7 8NZ, 0117 9071852 | Joe's Bakery at The Bread Store, 45 Glos Rd, BS7 8AD, 0117 3303798 • [www.joesbakery.co.uk](http://www.joesbakery.co.uk) @Joe's Bakery Bristol



*Don't forget to mention Bishopston Matters when replying to ads!*



# Your Local Award Winning Law Firm

You have our best – every time

Barcan+Kirby offers a comprehensive range of legal services, for individuals and businesses, delivered by expert lawyers and supported by our culture of respect and understanding.

## For you and your family

- + Divorce + Separation
- + Family Matters
- + Children Law
- + Domestic Abuse
- + Will Writing, Powers of Attorney and Trusts
- + Probate + Estate Administration
- + Court of Protection
- + Employment
- + Your Property
- + Medical Negligence
- + Personal Injury
- + Dispute Resolution
- + Notary

## For you and your business

- + Corporate + Commercial
- + Commercial Disputes
- + Commercial Property
- + Commercial Property Disputes
- + Notary
- + Employment

barcankirby.co.uk | 0117 325 2929 | hello@barcankirby.co.uk @barcankirby

Visit our Bishopston office at 60 Gloucester Road, Bristol, BS7 8BH

We six offices in total across Bristol and South Gloucestershire:

BEDMINSTER | BISHOPSTON | QUEEN SQUARE | CLIFTON | KINGSWOOD | THORNBURY

This firm is authorised and regulated by the Solicitors Regulation Authority. No: 568743.

4 Bishopston Matters Email me on kerry@bishopstonmatters.co.uk

## Local brothers getting on their bikes to raise funds for The Cystic Fibrosis Trust and Chance to Shine

This month we were contacted by local resident Neil Priscott, with news of an epic journey his older brother is to embark on this July – the John O' Groats to Land's End (JOGLE) bicycle challenge!

Cycling the length of the UK is no mean feat for anyone but when Neil told us his brother – Stuart Priscott (also a Bishopston resident) will become the oldest person living with cystic fibrosis to complete this challenge, we were blown away!

Neil, who plans to join Stuart for as much of the trip as he can, is clearly bursting with pride for what his brother is setting out to do, "I know I'm biased but I think what Stuart is doing is inspirational!"

The JOGLE challenge is all the more remarkable for the fact that Stuart did not own a bike until his 49th birthday, when wanting to give himself the best chance of staying well during the Covid outbreak, he embarked on a new fitness regime. After a long career in cricket coaching and administration – which also included two years as a professional player with Somerset County Cricket Club – he is set to tackle the hardest physical challenge of his life.

Stuart shares, "This is a challenge unthinkable for most of my life. Over the past 50 years I have benefitted from amazing medical research and discoveries, excellent health care from the NHS and supportive family and friends. I have experienced first-hand how new drugs and treatments can transform people's lives."

As well as Neil, Stuart will be joined by two friends Matt Theedom and Scott Chappell who are all cycling to honour the memory of Stuart's sister, Jo, another CF sufferer, who died in late 2018, aged 50.

Stuart told us, "Jo was a kind, loving and inspirational sister and friend. As a family we were devastated by her death, which felt untimely so soon after a lung transplant she had waited so long for. It is the way in which she led her life with such passion and vigour that has driven me to take this challenge in my 50th year."

Setting off 11 days after turning 50, Stuart and his team will cycle the gruelling 874 miles to Land's End in a bid to raise £50,000 on behalf of two charities: The Cystic Fibrosis Trust and Chance to Shine, an



LtoR: Stuart & Neil Priscott



organisation that promotes cricket in schools and communities.

Explaining why he is raising money for the two charities, Stuart continued:

**"In learning to live with CF I have realised it is not enough to be alive – life is for living and everyone needs a purpose. I was lucky from an early age that I found cricket as an outlet to stay active, meet people and develop friendships, and strive to achieve. In my role at Chance to Shine, I see up close the positive impact sport can have on young people and the way it can be the spur to unlock potential."**

Chance to Shine supports Gloucestershire's schools' cricket programme, which over recent years has included provision at our local schools such as Sefton Park, Ashley Down, Brunel Field and Bishop Road.

Cricket has been a life-long passion for the Priscott brothers; Stuart has an office at the County Ground where he works as Operations Director, which covers the whole of England and Wales, and Neil is Commercial & Marketing Director for Gloucestershire County Cricket Club, after previously working at Lord's Cricket Ground for 15 years! The pair both volunteer at Golden Hill Cricket Club (helping with the Girls' Under 13s team).

The brothers live locally with their children who enjoy attending Bishop Road, Cotham and Redland Green schools.

Neil told us, "We love the community spirit of Bishopston and the local independent shops. It's such an incredible place to live and work. We've probably spent way too much money in some of the local pubs and restaurants over the years!"

The brothers are hoping our wonderful community spirit will lead to readers supporting this fantastic fundraiser; please give what you can by visiting <https://uk.virginmoneygiving.com/StuartPriscott>





## News from Red Dragons Martial Arts

We, at Red Dragons Martial Arts, hope you are all safe and well. We have really enjoyed being able to see our members again in the dojo and we have even been able to welcome some new members which has been wonderful.

It has been really incredible to see everyone push themselves and develop new skills, as well as getting fitter and more flexible.

If you are interested in joining our martial arts family then please let us know. We are very nearly at full capacity so we can only operate on a first come first served basis. Don't miss out come and join us for the fun!

*Take care and stay safe, Sensei*

### Red Dragons Martial Arts School

Delivers a fun and friendly brand of martial arts. Focusing on positive characteristics such as, leadership, respect and effort.

Classes: **Teeny Titans** (age 2.5–4), **Tiny Titans** (age 3–6), **Junior programme, Adult classes & Ladies only.**

**Currently taking new members.**

Martial arts training is perfect for developing self-discipline, focus, listening skills and motivation. It is also a fun way to get fit, improve your strength and muscle tone.

**Facebook: Red Dragons Martial Arts**

**Email: [info@reddragonsmartialarts.com](mailto:info@reddragonsmartialarts.com)**

**or Call: 07779 740 432 to book your free trial.**

## Play at the Ardagh

PLAYFUL  
BRISTOL

In our recent site-users survey, the need for space for play, sport, health, wellbeing and leisure at the Ardagh was emphatic.

Provision of space for children and young people to play, as well as a wider range of opportunities, for example dance, roller-skating and wheeling came through again and again.

In response to this longstanding need in the local area – made more urgent by the recent, and ongoing, pandemic experience – ACT has been working with the support of Playful Bristol ([www.playfulbristol.org](http://www.playfulbristol.org)) to develop a play strategy which can grow alongside the wider regeneration of the Ardagh for sport and wellbeing use. This strategy is being led by our new Play Coordinator, Emily, who will be working with

the support of Playful Bristol to engage with local children, young people and families to develop a play offer at the Ardagh which responds to community feedback. We are excited to see where this work leads!

Emily will be on site in the afternoons of Wednesday 28 July and 11 August, to chat to young people, children and families about play at the Ardagh and the kinds of things that they would like to do here.

Do come along and say hello and chat about the kinds of things you might like to get involved in here.

**For further information and to get in touch, please visit: [www.theardagh.com](http://www.theardagh.com).**

## THE AERIAL MAN

TV Aerial and Satellite Specialist

- Poor Reception Problems Solved
- Fully Guaranteed
- Digital Aerials
- Satellites
- Additional TV Points
- Repairs
- Sky Work
- OAP Discounts
- Free Quotes
- TV Sales
- Humax Recorders

**0117 967 9028**  
**07818 413 451**  
[www.theaerialman.co.uk](http://www.theaerialman.co.uk) | [info@theaerialman.co.uk](mailto:info@theaerialman.co.uk)



## BRISTOL STEINER SCHOOL

Independent Day School for Children



*Where education is a journey, not a race*

**Kindergarten and Main School places available**



Contact Reception to book a personalised meeting

0117 933 9990

[reception@bristolsteinerschool.org](mailto:reception@bristolsteinerschool.org) | [www.bristolsteinerschool.org](http://www.bristolsteinerschool.org)



## Horfield Welly Pre-school



Last few remaining places for 3 and 4 year olds for Sept 21

Safe and stimulating environment where children (2-4 yrs) can thrive  
Ofsted outstanding 2019/20  
Highly skilled and qualified staff  
Up to 4 mornings a week (15 hours), Tuesday to Friday  
Large indoor and outdoor garden with Forest School opportunities

Visit our website for a virtual tour

**Email: [horfieldwellyad@gmail.com](mailto:horfieldwellyad@gmail.com)**

**Mobile: 07837133925**

Horfield Parish Church Hall, BS7 8ST

Registered charity No: 1045897

[www.horfieldwellypreschool.org.uk](http://www.horfieldwellypreschool.org.uk)



## Bespoke playhouses and climbing frames



Designed with you to suit your space and your family, and built to last

Get in touch for a free consultation



[littlehousebristol.co.uk](http://littlehousebristol.co.uk)  
[facebook.com/littlehousebristol](https://facebook.com/littlehousebristol)  
[hello@littlehousebristol.co.uk](mailto:hello@littlehousebristol.co.uk)  
07779 606934

## Annette Adams School of Dancing Carnival Summer School

At Horfield Methodist Church Studios, BS7 8SN

For children aged 4 to 12 years

**3 days of Dance, Drama, Arts and Crafts, Fun, Games & Celebration Party!**

**27th, 28th & 29th July 2021**

All for just £80.00!

Previous dance experience is not necessary  
Please email or visit our website to book your places

**[www.annetteadamsschoolofdancing.co.uk](http://www.annetteadamsschoolofdancing.co.uk)**  
**[admin@annetteadamsschoolofdancing.co.uk](mailto:admin@annetteadamsschoolofdancing.co.uk)**







## The Brunel Bantams did go to Specsavers!

Brunel Bantams FC was founded in 2015, by three football mad dads and a gaggle of kids from the then newly opened Brunel Field Primary school. The first session took place in the autumn of that season with a couple of pop-up goals, a few balls and a lot of enthusiasm!

The team is now delighted to have secured sponsorship from Specsavers Cribs Causeway, who have very kindly agreed to provide £1,000 as sponsorship for their U9s team. This funding will benefit this year group over the next two years.

The club has always prided itself on being inclusive and welcoming. Lots of kids from all different schools in the North Bristol area have joined over the last five years. The Bantams currently run squads from year 1 through to year 8, and hope to keep their teams playing in various leagues from infant through secondary school.

The Bantams were originally based on the Downs but now play at the BAWA sports centre in Filton, which has been a great move for the club, with improved facilities and pitch quality. Every Saturday morning you can see a lot of happy players in orange and black, playing and enjoying their football.

In the last three years the team have created a girls development squad, that has been a great success. Coaches also encourage girls to join the main age group teams if they want to play in the organised leagues.

Several of their coaches have been put through FA training to improve the quality and structure of their coaching. The Bantams are an FA-affiliated club and follow all the FA guidelines in regards to youth football with child welfare and respect at its core.

For further info please contact:

[johnsons2006@hotmail.co.uk](mailto:johnsons2006@hotmail.co.uk)  
[www.brunelbantamsfc.com](http://www.brunelbantamsfc.com)



Little Foxes Forest School is your local forest nursery, founded by and run by a team of highly qualified teachers and staff. We are proud to be caring for our 2.5 – 4 year olds in the beautiful surroundings of Stoke Park Estate in BS7.



To find out more about our nursery, or to put your child on the waiting list visit [www.littlefoxesforestschool.com](http://www.littlefoxesforestschool.com) or email [info@littlefoxesforest.co.uk](mailto:info@littlefoxesforest.co.uk).

Wishing everyone good health and happiness from all of our team.



## Need an Accountant?

**TaxAssist Accountants**  
The Accountancy and Tax Service for Small Business

Our services include Accounts for Sole Traders, Partnerships, Limited Companies, Tax Returns, VAT, Payroll, Business Start-ups and Company Formations

# 0117 370 0016

FREE initial consultation  
[iansmith@taxassist.co.uk](mailto:iansmith@taxassist.co.uk)

**Fixed fees agreed in advance**

Visit us at [www.taxassist.co.uk/horfield](http://www.taxassist.co.uk/horfield)  
or at 288a Gloucester Road,  
Bristol, BS7 8PD

## Local & online tutor for children aged 6–11

Horfield resident Liz Romero

I trained as a primary school teacher in 2010, after volunteering at St Bonaventure's school, where my daughters both attended. Post qualification, I was a class teacher at Westbury Park, St Mary's Bradley Stoke, and St Bonaventure's. I am now a part-time class teacher at Our Lady of the Rosary, Lawrence Weston. The rest of the time I work as a supply teacher and a tutor.

I love working one to one with a child and watching them grow in confidence. I think it is helpful if I can liaise directly with their class teacher so that I can tailor my tutoring to their needs in school.

My teaching style is positive and warm but focused so that we make good progress during a session but it is still fun. I can tutor in any of the subjects in the Primary Curriculum and I can also prepare children for entrance exams to grammar school or private school. I am delighted to have assisted students to successfully secure places in their desired schools.

I live near Gloucester Road in Horfield and would like to tutor children in their homes within walking distance of my home, or online. I am fully DBS checked and can provide references on request. I won't be asking parents to commit to a series of sessions unless they want to. I am happy to work on an ad hoc basis, at a reasonable hourly rate, afternoons or weekends.

Please email me on [eromerotutor@gmail.com](mailto:eromerotutor@gmail.com) or call **07824 700 439** if you would like to discuss how I can help boost your child's confidence.

"My teaching style is positive and warm but focused so that we make good progress during a session but it is still fun."



## YOU CAN LEARN TO PLAY THE DRUMS

Friendly 'In Person' and live online lessons

Locally based

Complete beginners to professional players

25 years teaching experience

10 years international touring experience

More info at [scotthammond.co.uk](http://scotthammond.co.uk)



Bristol Grammar School

## Life changing

Open Evening  
Friday 1 October

Year 3 to Year 6: 4.00pm–6.00pm

Year 7 to Lower Sixth: 4.00pm–8.00pm

Call Hollie Matthews  
on 0117 933 9885







**ST BONAVENTURE'S  
CATHOLIC PRIMARY SCHOOL**

Striving to be the best we can,  
guided by the light of Christ

# SEPTEMBER PLACES AVAILABLE

*For pupils in Reception, Year 3, 4 and 6.  
Appointments for tours available by request.*



*Please contact:*

**Email:** [admissions.stbonaventures@bristol-schools.uk](mailto:admissions.stbonaventures@bristol-schools.uk)

**Web:** [stbons.uk](http://stbons.uk)

**Phone:** 0117 353 2830

*All are welcome at St Bonaventure's.*

## News from St Bon's



Wow what an incredibly busy start to the term!

Thangam Debbonaire (pictured top right) visited our pop up garden in the first week of term and spent time talking to our children about their learning from our whole school theme 'Care for Our Common Home.' Children were able to share issues they identified and Thangam agreed to take these and share them with the government.

The pop up garden was an idea that came from our Modern Foreign Language tutor, Pippa Allenby. It started as a small idea and then grew. Staff spent the first week of term constructing the garden and parents donated their time collecting hay bales and donating items such as pallets and plants. It was a true community effort. Initially we anticipated that the garden would remain in place for a week before we relocated it around the school site however the children have asked that it stays in place for the remainder of this term. The difference this will have on our children's wellbeing, providing them with an instant outdoor classroom is incredible.

"We want all our children, especially those who don't have access to green spaces, to spend time relaxing and soaking up the sights, sounds and smells of the garden. We want them to enjoy the feeling of being outdoors where they can let their imaginations run free. Our pop up garden is a space where everyone in our school community will be able to come and find time to connect with themselves, their community and the planet. These connections are fundamental for nurturing happy, confident children who are able to face the challenges of our changing world.

Through the school theme of 'Care for Our Common Home', pupils will use the outdoor garden space to talk about global and local environmental issues such as biodiversity,

energy, food, water and waste. There will be storytelling, art and craft sessions and talks from Bristol Waste and local zero waste mobile shop 'Oat Float'. Classes will also go on a journey into the future in the garden space, where they will imagine Bishopston in 2030. They will then come up with ideas and ways for the school to become more sustainable. "We want our pop up garden to be the start of our whole school journey to net zero carbon emissions by 2030 so that we can play our part in Bristol's response to the climate emergency" says Sarah Ballantine.

With the completion of our purpose-built wellbeing pod back in May, we feel that we are well on our way with supporting our children's social emotional and mental health as they recover from the effects of the pandemic.

Five of our teachers also completed a fundraising sky-dive this month in aid of our wellbeing projects. The teachers were also raising money for charities close to their hearts including those focusing on pancreatic cancer, autism and homelessness in Bristol. So far they have raised well over £1000 which is fantastic. The teachers pictured from left to right are Mrs Addleman, Mrs Garrett, Mrs McGrath, Mr Harrison and Mr Morgan. Thank you to them all for their bravery!





# Fairfield High School

An International Academy



“ Fairfield provides an excellent academic and holistic education, encouraging its students to become good citizens. I was particularly impressed by the strong tutorial system and fantastic pastoral care. ”

- Former Parent



For more information, including updates about our forthcoming OPEN EVENTS, please visit [www.fairfield.excalibur.org.uk](http://www.fairfield.excalibur.org.uk)

Achieving Excellence



## Rock climbing course offers students a wealth of benefits

A group of students in Years 8 and 9 have been given the excellent opportunity to develop their fitness, strength and balance, as well as other skills such as team work, focus and confidence thanks to a 10-week rock climbing programme run by Urban Uprising at The Mothership Climbing Academy in Bristol.

While the programme is in its early stages, the benefits are already clear to see. Year 8 student Rosie comments:

"I think the programme is really good for mental health and it helps get kids to try something they might never have done before. It distracts you and makes you happy in that moment which is really important. It is also really challenging and requires a lot of perseverance. I'm excited about what the next few weeks will bring."

This feedback is reinforced and recognised on a much wider scale, as stated by the NHS: "Climbing involves concentration and thought as well as physical exercise which helps keep you focused, clears your mind of outside worries and also builds your confidence and self-esteem, alleviating the symptoms of some mental health problems."

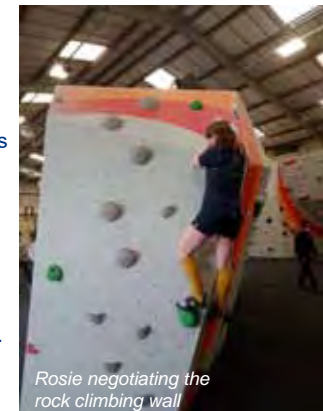
This is especially important in light of the past year with the ups and downs the pandemic has brought;

the effects on some young people have been well documented and initiatives such as these can only be a positive step forward as restrictions are easing.

Nick Vines, Urban Uprising volunteer comments:

"The difference between the first and second session is vast. In session one the kids were understandably more nervous and curious with echoes of 'can't' and 'impossible' but in session two the kids were more engaged and loved the logging of each route they climbed. It was rewarding for us to see kids who didn't succeed the first time round keep trying until they did. This attitude is a core part of climbing and something that I personally carry with me throughout life."

At the end of the 10-week course, students are expected to gain a Level 3 climbing qualification, with the option to progress further.



## Tutor Doctor Bristol



1-to-1 in-home and virtual tutoring  
A local, family business with  
fully vetted, local tutors  
All Levels & All Subjects

For a free consultation call 0117 325 3698  
or visit [www.tutordocor.co.uk/Bristol](http://www.tutordocor.co.uk/Bristol)



## News from...

**Glos.  
Rd. WI**

Gloucester Road WI remains a really vibrant and active WI. It has continued to meet on the third Tuesday in the month, even during the pandemic, and like a lot of other groups has taken to meeting online.

We've recently launched a fund (supported by

two of our fantastic members India Rabey and Katie Mack) to enable every member to attend a free online Denman College course. They have some really fascinating educational material from travel talks to learning how to up-cycle your clothes and cook-along experiences and much more. [www.denman.org.uk](http://www.denman.org.uk).

Over recent months we've celebrated International Women's Day and had a talk from WomenKind (our nominated charity we will be raising funds for this year), found out all about a goldmine of a web portal called 'Know Your Place' and learnt about Deaf culture and some British sign language. July is all about sharing resources to support women business owners and entrepreneurs, and in August, Covid status permitting, we'll be having a 60s dance lesson and party with the Go Gets! Lots more info on the website.

New members are very welcome to join, we can offer membership on a pro-rata basis. Please see full Membership details on our website along with lots more information about what we get up to! [www.gloucesterroadwi.org](http://www.gloucesterroadwi.org)



## LEE'S CARPETS

EST. 1957

A family run business serving Bristol for 50 years. Extensive range of carpets, laminate & vinyl flooring. Our own team of carpet fitters are on hand to professionally supply and fit your new flooring.

Visits to showroom are currently by appointment only, please call to book in.

**Tel: 0117 951 4262**

5 Muller Road, Horfield, BS7 0AB

Open: Mon, Tues, Thurs, Fri: 9.15AM – 5PM  
Weds: 9.15AM – 12.30PM, Sat – 9.30AM – 4PM, Sun – Closed

## FOOD SHOP

It is great to welcome Bristol indie grocer Darren (pictured), to Overton Road (previously Wild Leaf) with his new grocery store – FOOD SHOP.

Darren explained FOOD SHOP is focused on supporting independent food makers from Bristol, the South West, and beyond. They stock high-quality, well-made products that have good provenance, add social or sustainable value, or are just simply delicious. You can shop online to collect or visit the store, where Darren will be pleased to talk you through the fabulous products.

Coming from a background in hospitality, Darren put lockdown to good use – with the birth of his dream business. He came to Bristol a couple of years ago and Gloucester Road was one of the first places he visited, he was blown away by the independent cafes, restaurants and shops. When the Overton Road venue became available Darren knew this was the perfect place for him.

Darren believes in paying his suppliers and producers a fair price for the skill, knowledge and quality that goes into their products. He also believes in selling the best quality for the best price possible so has kept overheads low with a simple fit out in the shop.



As well as food, Darren has a passion for coffee; you can select the delicious beans you desire and have them grounded on site if you wish. You can also buy quality bag-in-a-box wine, refill wines and a great selection of local craft beers.

Darren loves Bristol and loves the people! He has been delighted with the positive response he has received by local shoppers since the launch of FOOD SHOP and already has some regulars. If you are looking for a special gift Food Shop hampers are proving popular.

**63 Overton Road BS6 5AD | [foodxshopx.com](http://foodxshopx.com)**

Check the website for opening hours.

**DELI | MEATS | CHEESE | COFFEE BEANS  
FERMENTED FOOD | OFF LICENCE**

- Trusted reputation
- Huge choice of doors, worktops appliances, sinks & taps
- Free planning & design service
- Door swaps to full kitchens – tailored to your needs



11/12 The Promenade,  
Gloucester Rd,  
Bristol BS7 8AL

Call for a free estimate on:  
**0117 944 3223**



**Checkatrade.com**

AVERAGE SCORE 9.8/10

[www.dreamdoors.co.uk](http://www.dreamdoors.co.uk)

## DREAMING OF A NEW KITCHEN?

CALL FOR LATEST UPDATES ON  
SURVEYS AND APPOINTMENTS



**DREAM DOORS®**  
NEW LIFE FOR OLD KITCHENS

THE UK'S #1 KITCHEN  
MAKEOVER EXPERTS





## Introducing Drum & Paice

Hi, I am George Paice and I have been drumming in and around Bristol since I was 10 years old, and working in Bishopston as a drum teacher since 2002.

You may be familiar with me as I was one of the DrumBank family. I am now excited to be launching my own teaching business – Drum & Paice!

Drumming and music have played a huge part in my life and I have been really lucky to be able to contribute to the amazing music scene here in

Bristol. I have gained loads of experience through teaching and gigging which has helped me develop as a tutor.

Over the years I have taught over 25,000 lessons! The reason I keep doing what I do is because I love it. I get to combine my love of drums with my passion for teaching. I have taught people of all ages and abilities; I can teach purely from a hobby approach or work towards grades with Trinity and Rock School.

When I am not drumming you will find me bouldering at Bloc or exploring the local area with my young family; if I have a spare moment I enjoy a cheeky coffee along Gloucester Road.

I am currently teaching at the Helliwell Room on Wellington Hill which is bright and airy and has great acoustics. My lessons are Covid compliant with government guidelines and I can offer online lessons if preferable.

[drumandpaice.co.uk](http://drumandpaice.co.uk)  
07793075354



### Fancy joining a community choir?

**Bristol All Voices Allowed Choir** is a community choir started in 2020 by former members of the Bristol Hippodrome Choir (a victim of Covid). They are looking for new singers, men and women, to join. Bring your energy, make new friends and forget about life for a while!

**Rehearsals on Tuesdays, 6.30 – 8.00pm at Holy Trinity Church, Hotwells.**

**Contact Chris on 07866 456 776**



### Graham Sothcott Guitar/Ukulele Tutor

Electric, Acoustic, Bass, Ukulele

One-to-one tuition from his local Studio

Preparation for Grades. Music theory.

Tel: 0771 4949 930

[graham.sothcott@dsl.pipex.com](mailto:graham.sothcott@dsl.pipex.com)

Member of the  
Registry of Guitar Tutors

### Rebecca Ramsden Editorial Services

*Refining your written message*

- websites • leaflets/posters • letters/reports
- theses/dissertations

*Don't let a typo cost you business*

Contact me to find out more about the proofreading and editing services I can offer your business.

\*Based in Horfield, Bristol\*

07967 273595 [rebeccamramsdend@gmail.com](mailto:rebeccamramsdend@gmail.com)



**Drum & Paice**

**DRUM LESSONS**

Bishopston based  
All ages and abilities welcome

[drumandpaice.co.uk](http://drumandpaice.co.uk)  
[georgepaicedrums@gmail.com](mailto:georgepaicedrums@gmail.com)  
07793075354



Niche's ready-made frames



New mount cutter



L to R: Tim, Siobhan, El & Amy

## What's new at niche?

It was great to be able to step inside niche again and catch up on all of their latest news! As always, this independent business was exuding positive energy.

Talking me through all the latest developments were manager, Tim, and assistant manager, Siobhan. Both have a background in art – Tim comes from Farrow and Ball where he was assistant manager and colour consultant. Siobhan has been with niche since 2017 so has a great understanding for the business. She enjoys working on illustration projects in her spare time.

The first exciting news I heard was the arrival of a mount cutter to their Zetland Road venue. This clever new tool will enable small projects (maximum A2 size) to be turned around quickly – for clients who select frames and mounts from niche's 'ready-made' collection. Artwork can be printed on site (files can be emailed or brought in on a

USB), mount and frames selected, and the print framed and collected within the day! This is something clients have been requesting and the team are now delighted to be able to offer. The ready made frames come in a black, white and wood range colours in a good selection of sizes.

Niche of course continues to offer an expert bespoke framing service. Due to positive client feedback, the appointment service set in place due to Covid restrictions remains in place and times can be booked online.

Both Tim and Siobhan were buzzing with enthusiasm to implement plans that will ensure the improvement of trusted services they offer, alongside expansion to deliver new ones. They look forward to updating the work space and their online presence too – watch this space!

**01179 422213 • [info@nicheframes.co.uk](mailto:info@nicheframes.co.uk)  
[nicheframes.co.uk](http://nicheframes.co.uk) • 4 Zetland Road, BS6 7AE**

Free customer car parking just off Cranbrook Road



**Douglas & Young**  
Our advice. Your future.

Financial health check   Investments   Protection   Retirement planning   Legacy planning & long term care

'Local, professional financial advice on your doorstep'

[www.douglasandyoung.co.uk](http://www.douglasandyoung.co.uk)

**Jennifer Douglas**  
Chartered Financial Planner  
M: 07496 136634  
E: [jennifer@douglasandyoung.co.uk](mailto:jennifer@douglasandyoung.co.uk)

**SOLLA**  
Society of Later Life Advisers  
ASSOCIATE

## Funded Support is Available for Bristol Based Businesses

Bishopston based photographer, Barbara, has faced her fair share of challenges during the pandemic. Her business relied on events and gatherings, which of course ceased during lockdown. With options starting to run out, she managed to turn things around just in the nick of time.

Barbara's business adventure began when she was working for the press around 8 years ago. "I used to jump out of helicopters and photograph the latest scoop!" she explains. "These days I can mostly be found not jumping out of helicopters but photographing people who are looking for strong images, mostly in the PR and corporate world."

We asked for her thoughts on Bristol and why the city works so well for her business. Barbara explained, "The beauty of Bristol is that it is so vibrant and creative. The businesses I photograph like to show an alternative side of themselves, perhaps in a more authentic way, which is great as my press background has given me the skills to be able to tell a story with a photo."

The main challenge facing Barbara during the pandemic was the complete lack of work available. Barbara reached out to the North and East Bristol Support (NEBS) programme delivered by YTKO for help. NEBS, which is government funded, was able to provide essential business training, workshops, webinars and 1:1 advice, all completely free of charge.

"My business was hit quite hard during COVID and the lockdowns" Barbara explains, "NEBS let me know about the grants on offer with Bristol City Council and I was awarded the Additional Restrictions grant which was amazing as I wouldn't have heard about it otherwise."

The grant has helped Barbara battle the storm and has given her time while the world slowly starts to resume and her photography opportunities start to rise.

When speaking about NEBS Barbara said, "The team are always happy to talk and go through business ideas and issues that come up. Every member of the team I have liaised with are knowledgeable, supportive and no question is too trivial. They have been invaluable to my business".

The idea of free business support for Bristol based businesses does sound too good to be true. But without it, Barbara and similar business owners could find themselves navigating the challenges of their businesses alone. As Barbara puts it rather wonderfully "Why wouldn't you use free business support? It

costs nothing except your time, and you may be surprised at the help that is out there for you. I've been running my business for 9 years and never realised the support that was out there for me."

**If like Barbara you manage or are starting a Bristol based business, then why not find out what help is available to you?** NEBS can assist you whether you're running a business with up to 249 employees or you're just starting out with an idea. The programme is offering free support to pre-start, new, small or medium businesses across all industries, funded by Bristol City Council and the West of England Combined Authority. The programme offers training via two award winning platforms tailored to the size or stage of your business. This includes business planning, growth acceleration, marketing, finance, branding and so much more.

**Find out more and enrol for free business support at [www.westofengland.ytko.com/nebs](http://www.westofengland.ytko.com/nebs) or contact us at [nebs@ytko.com](mailto:nebs@ytko.com).**



**"Why wouldn't you use free business support? It costs nothing except your time, and you may be surprised at the help that is out there for you. I've been running my business for 9 years and never realised the support that was out there for me."**

## Celebrating 5 years making and selling lighting



It is always great to celebrate a local business, success story! Many of you will know Gloucester Road trader Fraser Besant for running his popular, family business

Ablectrics but Fraser has more than one string to his bow! His extensive knowledge and passion for lighting led him to launch Fraser Besant Lighting five years ago this month.

All of his stunning lighting designs are handmade in the workshop on Gloucester Road and displayed in the lighting showroom at Ablectrics. Fraser is pictured with one of their best sellers above.

Fraser told us, "From designing and making an eight foot robot light for Morgan cars, to supplying lighting to the Royal Family in Qatar, the past 5 years has been amazing and very rewarding. I am now working on a book to reveal the secrets to lighting designs and we are looking at a brand new showroom/shop in the local area, with customer parking in 2022. Very exciting times ahead!"

As well as celebrating 5 years since the launch of his lighting company, Fraser and family are rejoicing at a new shining light in their lives – his baby Adele, who arrived in June. The future is bright!



131 Gloucester Road, Bishopston, BS7 8AX | TEL: 01179 922977 | [www.fraserbesantlighting.co.uk](http://www.fraserbesantlighting.co.uk)

**WE DO FAR MORE THAN JUST FILE YOUR ACCOUNTS**

**A PRACTICE OF CHARTERED MANAGEMENT ACCOUNTANTS TO HELP YOU TO MANAGE YOUR BUSINESS ALL YEAR ROUND... NOT JUST AT YEAR END**

# EvansEntwistle

CHARTERED MANAGEMENT ACCOUNTANTS & TAX ADVISORS

**[evansentwistle.co.uk](http://evansentwistle.co.uk)**

432 Gloucester Road, Bristol BS7 8TX  
t: 0117 924 7767 e: [mail@evansentwistle.co.uk](mailto:mail@evansentwistle.co.uk)

Accountancy | Corporate Finance | Taxation | Business Advisory | Private Clients

**outset**  
The business start-up experts

**GET SET**  
FOR GROWTH

**North and East Bristol Support**  
Part of **YTKO GROUP**



**WEST OF ENGLAND**  
Combined Authority





## News from 106th Brownies

The 106th Bristol (The New Church) Brownie Unit, was pleased to welcome new members to their group as they made their Brownie Guide Promise, ahead of the summer half term break. The Girlguiding group have been able to enjoy outdoor gatherings and meeting face to face after spending the last year meeting on Zoom.

Warmer weather means the girls have been able to get back to playing games and participating in fun activities as part of their weekly meetings. Activities have included understanding more about nature, knowing what to do when exploring new places and learning about staying safe on a hot, sunny day – all benefiting from holding meetings outside.

The Brownie Guide Promise event took place on Horfield Common where they have been able to meet and take advantage of the lighter evenings. They were excited to have as many as 11 new members make their Promise and understand what it means to be part of Girlguiding.

They also enjoyed having one of their volunteers, Astrid Hall, renew her Brownie Guide Promise as part of her leadership training. Astrid joined the 106th Brownies in January 2018, with the desire to one day complete a PGCE and become a full-time teacher. The experience has given her the opportunity to join Girlguiding and understand more about working

with children, as well as enabling her to work on her Assistant Leader qualification.

She has enjoyed supporting the girls, getting to know them and watching their confidence grow through their experiences as they complete challenges set out by Girlguiding. They are then rewarded with badges to showcase their accomplishments.

If you'd like to volunteer with Girlguiding, you don't need to have been involved before or have loads of spare time to make a big difference. Whatever your skills and interests there's a role to suit you.

**Girlguiding is always looking for more helpers and you can register your interest via their website [www.girlguiding.org.uk](http://www.girlguiding.org.uk).**



**Sakya Buddhist Centre**  
121 Sommerville Road,  
St Andrews BS6 5BX  
0117 924 4424  
[bristol@dechen.org](mailto:bristol@dechen.org)

### Buddhist Meditation and Talks

**The Centre is now open** and running the following sessions in person and online:

**Tuesday evening, 8–9pm**  
and **Saturday morning, 10.30–11.30am**

If you would like to attend one of these classes

email: [bristol@dechen.org](mailto:bristol@dechen.org) for more information. There is no charge for these sessions but donations are welcome.



Bristol Buddhist  
Meditation Meetup



[www.sakyabristol.org](http://www.sakyabristol.org)  
[www.dechen.org](http://www.dechen.org)



**SOUL PILATES**

Move Better. Feel Better

**READY TO  
TRANSFORM THE WAY  
YOU MOVE & FEEL?**

Join Bristol's premier Reformer Pilates & Movement Studio, so you can feel more energised, calmer and stronger every day.

Pilates Reformer | Pilates Matwork | Private 1:1s | Barre  
Pre & Post Natal | Restore | HiiT | Wellbeing Workshops

[www.soulpilates.co.uk/bishopston](http://www.soulpilates.co.uk/bishopston) | 0117 214 1655  
Bristol North Baths, Gloucester Road, Bristol, BS7 8BE

**Elizabeth Nicholson**  
ACUPUNCTURE

Have you found lockdown stress has affected your health, sleep or energy levels? Acupuncture is a gentle way to support your physical and mental health, and improve your well-being.

Clinic days at The Arches Therapy Rooms and  
Bristol Osteopaths, Queens Square

[eliz.acupuncture@gmail.com](mailto:eliz.acupuncture@gmail.com) | 07734248326  
[www.elizabethnicholsonacupuncture.com](http://www.elizabethnicholsonacupuncture.com)



# SMILE & FACIAL AESTHETICS

FREE ONLINE CONSULTATION

Visit [www.horfielddentalcare.co.uk](http://www.horfielddentalcare.co.uk)

New Patients Welcome

Check up including Xrays  
and a complimentary  
Cosmetic Consultation

FOR £39.95

Proudly independent dental practice, Horfield Dental Care can look after all your Dental needs including a vast range of top cosmetic dental treatments to improve your smile.

Facial Aesthetics \*NEW\*  
Everyday dentistry  
Cosmetic treatments  
Smile makeovers  
Dental implants  
Whitening  
Childrens dental care  
Emergencies



Call Us Today!

0117 951 3026

Register & Book Online

[www.horfielddentalcare.co.uk](http://www.horfielddentalcare.co.uk)

info@horfielddentalcare.co.uk

Horfield Dental Care, 525 Gloucester Road, Bristol, BS7 8UG



Robyn Coetzee & Jill Sunderland

**Lunar Optical** are delighted with the beautiful glass moons commissioned from Robyn Coetzee; they look amazing and bring interest to an otherwise dull corner.

"I felt that with the changes we had to make to the practice due to Covid hygiene rules, we had lost some of our Lunar charm and cosiness. So having purchased the fabulous Moon painting by Emma Catherine, from Room 212, I got the idea that some glass moons would be a lovely compliment to the painting. Of course any glass projects always makes Robyn Coetzee of Fig come to mind. Robyn totally understood my vision of the colours and textures of the moons, I couldn't be happier with the result"

Jill CEO of Lunar Optical

291 Gloucester Road, Bishopston, BS7 8NY

0117 9420 011

[www.lunaroptycal.com](http://www.lunaroptycal.com)

Open: Mon 9:30 -17:30 • Tues to Fri 9:30 - 18:00  
• Sat 9:30 - 16:30 • Sun: Closed







## News from the green room

**New nudes!** We are enjoying trying out the fabulous, new 'nude' collection by Kevin Murphy. Above you can see the results on senior stylist Adrienne, who has naturally white hair and had previously had a natural toner. The selected nude colour offered perfect coverage with a natural glow. The team love this new collection!



If you fancy a new, gorgeous and fresh colour, the summer season is the perfect time to try out a shade from the 'nude' collection. If haven't had a colour for six months or more, a new patch test will be required. The Green Room only uses products of the highest quality that are cruelty-free from Kevin Murphy colour me and the OCS system.

The Green Room, 15 The Promenade, Gloucester Road, BS7 8AL  
Tel: 0117 942 75 75 **The Green Room**



## WE NOW HAVE ONLINE BOOKING!

**ICON**  
BEAUTY

Welcome to  
hassle-free booking,  
available any day  
any time.

*If you can't see a treatment, don't  
worry, call the salon on 0117 924 5566  
and we will be sure to look after you.*

To book your favourite treatment go to  
[WWW.ICONBEAUTY.CO.UK](http://WWW.ICONBEAUTY.CO.UK)



SCAN ME



**Kemps Jewellers** est 1881



*A large range of new and second  
hand diamond jewellery  
Gifts for all occasions  
Repairs & Bespoke jewellery service  
Competitively priced  
Professional friendly advice  
Beautiful gift ideas*

9 Carlton Court, Westbury-on-Trym  
0117 950 5090 • [WWW.KEMPSJEWELLERS.COM](http://WWW.KEMPSJEWELLERS.COM)

## The Flower Shop



### MONTHLY FLOWER SUBSCRIPTION

Bring your home to life with monthly deliveries of your favourite flowers. Each bouquet is hand-made by our expert florists, offering a unique and easy way to keep your home or office in bloom. You can pick from a 6-month or annual subscription.

**Local & National deliveries available.**  
Visit our website to find out more!

**[www.theflowershopbristol.com](http://www.theflowershopbristol.com)**  
**Tel 0117 942 0050**

145 Gloucester Road, BS7 8BA

## LIVING PILATES UK

**NEW PILATES HOME STUDIO  
IN THE HEART OF HORFIELD**

**PRIVATE 1-TO-1 SESSIONS  
OPEN TO ALL**  
SPECIALISING ON THE  
EQUIPMENT AND MAT FOR:  
SPORTS FITNESS  
INJURY REHAB  
POST SURGERY REHAB  
ANTENATAL  
BACK PAIN  
PILATES FOR MEN

**[WWW.LIVINGPILATESUK.COM](http://WWW.LIVINGPILATESUK.COM)**

E: [hello@livingpilatesuk.com](mailto:hello@livingpilatesuk.com)  
M: 07545 913 631



# EVERYONE MOVE MORE

# LIFT IT, SLAM IT, GRIP IT, WHIP IT

NEW MEMBERSHIPS FROM  
**£21**  
PER MONTH\*  
WITH A FREE TRAINING PLAN

**Horfield Leisure Centre**

0117 903 1643

**Easton Leisure Centre**

0117 955 8840

**Henbury Leisure Centre**

0117 353 2555

**Kingsdown Sports Centre**

0117 903 1633

**St Pauls Community**

**Sports Academy**

0117 377 3405



**everyone  
ACTIVE**

Everyone Active manages these facilities in partnership with Bristol City Council.

Or join online at [everyoneactive.com](http://everyoneactive.com)

\*Based on an annual membership, terms and conditions apply.

## Can you help keep Everyone Active?

The sport and leisure industry is back on its feet and recruiting again; at Everyone Active we are no different and are looking for good people to work for us.

Far from being an easy option, careers in our sector require hard work, dedication and a genuine passion for what you do. Our industry is all about people enjoying sport, keeping fit and improving their health and fitness.

At Everyone Active we offer a wide range of job roles including personal training, front of house, group exercise instructors, swimming teachers, sports assistants and much more. We also offer an Apprenticeship programme to take someone with less experience through to a fully qualified permanent job. Perks of the job include training in qualifications such as swimming teaching and fitness instructing and a free membership!

A combination of relevant experience and passion can greatly improve your chances of having a successful career in our sector. What we are really looking for is people with four key characteristics.

**Customer service** – To be successful in this sector, you'll need to demonstrate great customer service skills. This includes a willingness to listen to your customers and empathise with them.

**Communication skills** – Good communication and customer service go hand in hand, although there's much more to this than saying the right words. Your nonverbal communication – body language – is just as important.

**Teamwork** – Everyone Active needs people who can work effectively in teams to achieve collective goals. In all roles you must be comfortable working with other people and sharing tasks.

**Computer skills** – If you're in a customer-facing role, you'll often need to enter customer details on to our software quickly, whether you're speaking with the person on the phone or face to face.

Whether you're looking to become a swimming teacher, lifeguard, fitness instructor, personal trainer or any other role in the sport and leisure industry, **we want to hear from you. Send us your CV** and covering letter explaining which role you're interested in and why by emailing us at [cameronbate@everyoneactive.com](mailto:cameronbate@everyoneactive.com).



## EMBRACING PILATES

PILATES CLASSES FOR ALL LEVELS!

### Face-to-Face Classes

Tuesday & Thursdays  
9.30 to 10.25am – only £6  
at Horfield Parish Church Hall (Helliwell Room)

### Continuing Zoom Classes

Mondays 6.30 to 7.25pm  
Wednesdays 10.30 to 11.25am – £5

Please book via

[www.embracingpilates.co.uk](http://www.embracingpilates.co.uk)

For more details either  
email [info@embracingpilates.co.uk](mailto:info@embracingpilates.co.uk)  
or call Denise on 0117 903 0331

## Trainhers

**Ladies Only Gym:**  
for your 30 minute workout  
for ladies of all ages, shapes and abilities



Visit our website and  
follow us on social  
media for all the latest  
information

[trainhers.co.uk](http://trainhers.co.uk)



22 Kellaway Ave  
0117 944 6650

Mon - Thu 7am - 7pm  
Fri 7am - 6pm  
Sat - Sun 8am - 1pm







## News from Glos Rd Central



Summer is in full swing here on Gloucester Road and traders are enjoying welcoming local shoppers and browsers from further afield. Glos Rd Central seems to have become quite a 'destination' with our wide pavements covered in planters of flowers and so many art galleries and gift shops. Cafe Dream and Perfecto Coffee have lovely outside spaces to enjoy a coffee or lunch and watch the world go by. Bar Sidney and Eden and The Golden Lion take over for the evenings with a wide array of craft beers and live music.

Glos Road Central traders are really pleased to be included in the *Where's It To* campaign, run by Bristol City Council to promote local high streets. Gloucester Road is one of 15 high streets profiled across the city, highlighting numerous traders on each street and covering stores passed through generations of a family, through to brand new openings inspired by the pandemic. Gloucester Road resident and renowned street artist, Inkie, was asked to pick his favourite shops and bars and included Perfecto Coffee, Area 51, Odd Sox, Cafe Dream, Golden Lion and Room 212 in his choice. Follow *Where's It To* on social media to see the video and gain insight into your favourite places.

Art, jewellery and homewares continue to draw customers to our section of Gloucester Road so Paper Plane, Art & Chocolate, Fig and Room 212 have benefitted by offering a variety of everything made by Bristol artists. Fig is welcoming a couple of new artists to the fold. Long-time Fig artist Robyn Coetzee has created some special moon designs for Lunar Optical to match the beautiful moon painting by Emma Catherine which was purchased from Room 212 during lockdown. Lunar

Optical CEO Jill Sunderland said, "I have been a fan of Robyn's work for several years, so when I was thinking of some artwork for Lunar Optical, of course I approached her. I had an idea of a moon triptych in phase of the crest moon. We exchanged some ideas regarding colour, size texture. Robyn totally got what I was looking for, and voila we have our beautiful moons." Robyn and Jill are pictured above.



Now that Millards has closed Art & Chocolate has decided to separate to gain more space for both businesses. Mariusz Pionka is expanding his handmade chocolate business, calling it Chocolatier.

Room 212 had a fantastic reaction to their bright and colourful tropical window displays with many original paintings sold. Water will be the theme throughout July and August so expect everything from seascapes to wild swimming and marine life. We love Laura Robertson's Wild Swimming Women pictured here and available as a print or card and Jo Whiteland's wonderful lampshades made from her batik designs, including an octopus, puffins and oyster catchers, are incredibly popular. Look out for Antonia's Deli who will be popping up outside Room 212 every Saturday in July, with their homemade deli produce. From scotch eggs to homegrown organic microgreens – all perfect for picnics and healthy lunches.

Nola Interiors is happy to introduce Little Greene's newly launched paint chart duo with 14 exciting new colours. Earthborn has also recently introduced 12 new colours. Pop in for paint charts for both of these lovely eco paints plus tile brochures as well as colour advice. Bristol Furniture Works have been busy making a range of furniture in house. Chat to Mick about your shelving needs.

## Laurence Kell Portraits



My career as a portrait painter began while I was living in my home county of Cornwall.

In 2003 I was running the Gurnards Head Hotel in West Penwith with my family when I had my first major painting exhibited in the BP Portrait

Awards show, at the National Portrait Gallery.

Since that success I have been working to commission as a portrait artist. It's an endlessly interesting area of art, meeting new people and building unique connections. I describe my work as figurative and believe that drawing is at the heart of my practice.

I studied at Falmouth School of Art, now Falmouth University. I'm a part-time tutor at the RWA Drawing School and live with my wife who is a photographer, and our two kids in Ashley Down.

**For drawing or painting commission enquiries please contact [www.laurencekell.co.uk](http://www.laurencekell.co.uk)**

## Laurence Kell Portraits



07803 157280

[laurencekell.co.uk](http://laurencekell.co.uk)

Follow on Instagram: [laurence.kell](https://www.instagram.com/laurence.kell)



"On Gloucester Road, everywhere you look there's something completely different, there's no chain stores and that makes a refreshing change from most of the high streets in England. We've got the longest stretch of independent shops in Europe, and obviously great street art. The Grace is one of my favourite watering holes. Gloucester Road is great for pubs and restaurants. The Galli, The Royal Oak and the Wellington and slightly off track on Ashley Down the Lazy Dog. You can't move for great places. Make sure you go and find Mike in Dalton's Butchers, the place that really kept me alive during lockdown. Sarah at Room 212 has a great local gallery selling some of my stuff and loads of local artists."

**Inkie**

*Inkie (left) and Sarah Thorp (right) pictured by Colin Moody*



Oddsox has a wide variety of sandals in stock – in sizes suitable for adults as well as children. Go online to book your fitting appointment.

Gloucester Road Bookshop continues to draw the crowds and is the perfect place to stock up on books for the summer. Owner Tom is extremely knowledgeable and happy to help you find or order the best reads. New florist Hannah at the Rambling Rose is also doing extremely well, especially now that word is out about her eco-friendly, locally sourced bouquets.

Icon Beauty has been matching all the art across the street by employing local artist Insta: [bx\\_illustrateandilluminate](https://www.instagram.com/bx_illustrateandilluminate) to create beautiful artwork on their window. You may have spotted her designs at Moda Hairdressing and Natural Born Flooring too. It's great that so many traders are adding to the art in our section and with the planters in full bloom Glos Rd Central is a really lovely place to be. Have a lovely summer everyone and, as ever, thank you for your support of all our indie businesses!

[www.facebook.com/GlosRdCentral](https://www.facebook.com/GlosRdCentral)



# GRAPE & G GRIND

## CELEBRATING 10 YEARS OF

Delicious wines, craft beers and  
artisan spirits & cider

FREE LOCAL DELIVERY

101 Gloucester Road, BS7 8AT  
GRAPEANDGRIND.CO.UK



People Power = Flower Power at the Ardagh



I am sure many of you have already appreciated the gorgeous gardens while enjoying a coffee at the Ardagh community cafe, and for those of you who haven't yet, you are in for a treat when you do!

The Ardagh Community

Trust has secured funding for a gardener to work on the site each week with a host of passionate volunteers. This month it was great to catch up with gardener Steve Galpin (pictured above) and hear how he has found his time at the Ardagh to date.

Steve has worked as a professional gardener, in private gardens for the last 15 years but he admits life at a community garden is vastly different but brilliant and rewarding. His work started on the gardens in the grounds to the Ardagh a year and a half ago; he said when he arrived the beds were looking a bit neglected so they set to work!

It was interesting to learn back in the 1970s the Ardagh had two full-time gardeners and the beds were bursting with colourful flowers. The beds are

once again blooming but in a less formal style to back then. Steve said he likes the contrast of the wild flower beds against the formality of the Ardagh building.

The community garden is 100% organic and wildlife friendly; this is of huge importance to Steve and all the volunteers. ▶

### Things to look out for in the Ardagh Gardens

**The living Willow structures** – The tunnel and dome in the new play space will only improve with age as they continue to grow and leaf up (the willows were kindly donated by a local allotment owner).

**The Fernery** – in a hidden corner at the bottom of the bowling green, you will find a beautiful, shady corner planted up with ferns next to some water – the wildlife love it.

**Tree trail** – the many impressive trees of the Ardagh site have been labelled up and are soon to be part of an interactive tree trail.

**Wildflower garden** – working with Grow Wild Bristol, a strip in one of the tennis courts has wildflowers getting ready to bloom in the coming weeks – perfect for bees and butterflies.

**Micro Orchard** – thanks to the efforts of the Botanical Garden students, a selection of fruit trees have been planted together in the left-hand entrance at the front of the site. Further fruit bushes will be added. Produce harvested will be donated to Family Food Action.

**Plant sales** – look out for plant sales taking place at the Ardagh over the summer.

**Community events & courses** as restrictions allow.





► A huge number of the plants have been donated. Steve explained, "It was a new challenge to design beds out of the plants received, rather than having a set design to work to at the start, but it has been great fun and wonderful to show people where their donations have been planted when they visit."

Since Steve started, the volunteers have grown from 4 to 17 people! Steve says the hard-work of these dedicated volunteers is the true key to the success of the gardens now. He is delighted to have a range of ages and experience in the team (see opposite).

One volunteer, Richard, also volunteers at the Bristol Botanical Gardens, and his connection to both venues led to the very fortunate donation of two vans filled with fabulous plants!

The team have clearly been hard at work developing new garden areas and there are lots of projects on the go for the benefit of the whole community (see page 31). When I asked Steve what was the most important garden project to him, his answer was the health benefits gardening has for our wellbeing. He has taken a course in Therapeutic Horticulture and is a deep believer in the healing power of nature and mental wellbeing.

We both agreed this has never been more relevant than over this past year and a half, as we all try to deal with pressures of Covid and lockdown. Steve shared, "The value of the Ardagh gardens to the community has been amazing. It has become a

sanctuary for people to sit with nature, enjoy the beautiful flowers and feel connected to both nature and the people who are sharing the space. It has been a lonely time for many and here people can still feel together even with social distancing in place."

As soon as Covid regulations allow, it is a priority for Steve to contact mental health charity MIND to offer courses to teach gardening as a form of therapy. As they develop their plant nursery, sessions to learn propagation and plant husbandry will be introduced.

Steve has been amazed and overjoyed at the response from the public, "The continual compliments and thank you's from local people to the gardening team, for what we have created, makes it such a rewarding place to work."

**"It sometimes feels like I am on the panel of BBC's Gardeners Question Time when working in the Ardagh grounds and speaking with visitors, but I don't mind at all, I love sharing my horticultural knowledge and could talk about plants all day!"**

**Ardagh gardener Steve**

I have been attending community meetings at the Ardagh for nearly 14 years to report in BM, and the battle to get to this point has been a long one. As I walked around the corner to the cafe on a normal Tuesday morning, discovering the area so alive with people of all ages, sat enjoying the gardens, was emotional.

The vision has always been there but to see it as a reality was moving and testament to the hard-work and dedication of the Ardagh Community Trust, who still have further big plans for the restoration of the whole site.

Do visit the Ardagh community cafe and enjoy the gardens and wildlife this summer ■



## The Volunteers...



**Manas**

Manas is one of the longest serving gardening volunteers, who now looks after all of the other volunteers – making sure everyone is welcomed and is allocated a job they like to do.

He took redundancy seven years ago, then took an RHS course, and was looking to volunteer. Living 10 minutes away, the Ardagh gardens are perfect.

Manas was keen to mention the hard-work of fellow long-term volunteers – Fiona (who he created the first flower beds with in the old cafe yard), Sarah who runs the community cafe, and of course Sam Thomson who has tirelessly worked to make all these new developments happen.

He shared that tending to the community gardens during the pandemic had been important for his own mental health, and witnessing the cafe re-opening and people return, so delighted to see the beautiful gardens had been an absolute joy.



**Richard**

Described by Steve as having an 'encyclopedic knowledge of plants!', I enjoyed speaking with Richard, who was in the middle of cataloguing the plants at the Ardagh (500 and counting!).

Richard lives locally and is pleased to share his knowledge. He has three allotments at Goldenhill so donates a great deal of plants himself; he is pictured above in a flower bed consisting entirely of plants he has grown and donated. He is also responsible for digging most of the new flower beds!

Richard, also works at the Bristol Botanical Gardens. His connection to both venues led to the very fortunate donation of two vans filled with plants, when Open Days couldn't take place at the Botanical Garden site due to Covid.

Richard told me it was great to consistently hear such positive feedback from visitors to the Ardagh site and talk with many people about the various plants.



**Sheelah**

A relatively new recruit and with no prior experience in gardening, it was wonderful to hear how much Sheelah is enjoying being part of the gardening team.

She explained she is currently taking a break from a stressful job and was looking to give her time to a charity without the pressure that some volunteering roles bring. The Ardagh is perfect, such a relaxed environment where you can enjoy the lovely vibe of the tennis, bowling and cafe without needing to have face-to-face interaction if you don't want to.

She said Steve imparts some different gardening knowledge at the start of each session, which she loves, and Manas always makes sure she is doing a job she is happy with. Sheelah is grateful to the people who make the volunteering enjoyable and the restorative and healing nature of gardening.



## Ardagh Community Gardens & Family Food Action – growing stronger together

Family Food Action (FFA) is a voluntary group, founded by local resident Emily Ryan (pictured left) in April 2020. FFA was created in a direct response to families finding themselves in food crisis in part due to the pandemic.

The scheme has expanded from Effingham Road to more than forty streets across North Bristol! Each with their own WhatsApp groups (and they are always looking for more streets to join them). Emily's home, until recently was the main hub where all donations were taken. I was delighted to meet with Emily during my visit to the Ardagh and learn

that the group is now co-ordinating their donations from a room at the Ardagh. Not only does this make sorting supplies to their four partners – The Vench Playground in Lockleaze, St Pauls Children's Centre and May Park and Evergreen schools in Easton – much easier, they can now receive and supply fresh produce from the Ardagh's vegetable garden. When I visited, the gardens had just supplied FFA with their first crop of spinach, pak choi and lettuce. As the season progresses a greater range of veg will be available. The Ardagh received donations of

vegetable seedlings thanks to Blaise Plant Nursery and look forward to developing their vegetable growing further.

**You can donate directly to the hub at the Ardagh on Tuesdays between 10.30am and 12 noon.**

*FFA suggested donations: Fresh fruit and vegetables, cheese, butter, eggs, nappies, sanitary towels, soap, shampoo, baby toiletries.*

For more information about the group, please contact [familyfoodaction@hotmail.com](mailto:familyfoodaction@hotmail.com).



# Hot dogs!

For this year it is likely that more of us will take a 'Staycation' and holiday in the UK rather than travelling abroad. This means that more of us will be taking our dogs on holiday with us rather than leaving them at home in the care of others or in kennels.

With temperatures already rising it may be a hot summer ahead and owners need to be aware of potential problems so they can be avoided. Dogs are particularly sensitive to heat; they are unable to sweat to lose heat as we can, as well as wearing a fur coat at all times. With the current trend towards brachycephalic dogs – the bulldogs and pugs, we are likely to be seeing more heat-stressed dogs in our vet practices this summer as this type of dog is particularly sensitive to heat.

Heat stress can occur for two reasons – exertion where the dog is exercised in an environment that he is not used to and overheats, or non-exertion where a dog is left in an environment that provides extreme temperatures with no method provided for cooling. Typically, this can occur in cars, caravans and conservatories. Temperatures in these environments can rise very quickly and leaving a window open is not sufficient. The initial signs of heat stress are severe panting and difficulty breathing leading on to salivation and diarrhoea and finally collapse, unconsciousness and death.

Brachycephalic dogs already have compromised respiratory systems due to their 'squashed nose' anatomy, when they pant excessively the tissues in their throat swell and further reduce their ability to breathe.

Dogs' feet can also be burned walking on hot surfaces particularly pavements and beaches. Test the surface first by putting your bare hand onto it and if you cannot hold your hand there for longer than 5 seconds then the surface is too hot to allow your dog to walk on.

Dogs should be walked in the cool of the day, early mornings and evenings. Avoid excessive exercise such as ball chasing. Use water to help keep your dog cool, encourage play in paddling pools and streams, this will help with the cooling by providing a wet surface for evaporation. Always have cold, clean fresh water available to drink. Provide constant access to shaded areas inside and out.

Brush your dog regularly to remove excess hair that will thicken the coat and hold heat. Consider a visit to the groomer for a full body clip.

Use water sprays and paddling pools to play as well as frozen toys, for example a long chew toy with frozen contents. Have damp towels for your dog to lie on to keep cool. Cool vests are available to

purchase which are quite effective at helping your dog but are not a substitute for common sense.

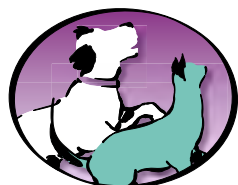
Use a high factor sunscreen to protect exposed areas sun as noses and ear tips particularly in white-coated dogs.

Before you book your summer holiday consider carefully if it is appropriate to take your dog with you. Are you able to leave your dog in a cool place when you go out for the day? Is your dog a brachycephalic and hence even more sensitive? Would your dog be happier at home with a dog sitter or in kennels where she can be cared for and kept cool?

Let's hope that this summer we do not have to institute emergency treatment for any heat-stressed dogs; once presented to a vet the outcome is not always a happy one and since this is entirely preventable it is always a very distressing condition for both owner and vet.

**Nicky Bromhall MRCVS**

Veterinary Surgeon, Animal Health Centre



## Animal Health Centre

*"A passion for pet care"*

- Nicky and her team have been providing expert, friendly and dedicated care since 2002
- A welcoming and relaxing atmosphere
- Free preventative health clinics for your pet
- Modern surgical, x-ray and dentistry facilities

*"Absolutely amazed by the service. Wonderful, knowledgeable people."*



358 Gloucester Rd  
Horfield  
Bristol BS7 8TP

**0117 924 7832**  
www.animalhealthcentre.org

Your local, friendly veterinary practice



## What's new at Roxfords Pet Shop?

Open 7 days a week • Free local delivery

**Introducing Duke!** Roxfords is delighted to welcome a new, super-cute member to their team – Duke the St Bernard puppy! He is already proving to be quite a character and at 11 weeks is as big as my Schnoodle Monty! Owners, Sarah and Michael, told me he has already brought so much joy to their world. Look out for this soon to be giant, bundle of fur-fun in the pet shop over the coming weeks, when he has had all of his injections.

**Keeping cool this summer** – We have been enjoying some lovely warm temperatures over recent weeks but our furry companions can easily overheat. Roxfords has some great toys and accessories to keep your pooch cool – from chill out bandanas that you place in the freezer before placing on your dog, to clever water bottles with a bowl attached at the top, to toys that can be filled with water, placed in freezer and then provide some cool fun! Sarah would also like to remind everyone to think carefully before stepping out on the pavement with your trusty friend in the midday heat, pavements can burn paws – if you can't comfortably place your hand on the pavement for 5 seconds it's too hot for paws.

**Snack-size pate** – best-seller Pure pates now come in handy treat sizes – perfect when out and about, even on a picnic!



155 Gloucester Rd, BS7 8BA • Tel: 0117 924 8397 • roxfordsthepetshop.co.uk



## Circle Dance Evenings Starting Up Again!

At The Old Library on the last Tuesday evening of the month  
led by Susannah Temple

**We hope that our first evening will be  
September 28<sup>th</sup> 2021  
7:30 – 9:30 pm**

**It will be good to see you back everyone!**

We'll have the music from different countries to enjoy  
Beginners are welcome and you don't need to have a partner

The dances vary a lot, from peaceful to lively  
Join in as much or as little as you want  
Susannah teaches as we go along, so you can pick it up gradually.

**New dancers always welcome!**

Warm, informal community dance evenings for all abilities  
Light refreshments provided  
Cost: five pounds or so to cover costs and support The Old Library

For more details, get in touch with Susannah: 0117 979 1519  
susannah@templegooglegmail.com

Watch this space for more news of our preparation!



Muller Road, BS5 6XP  
www.theoldlibrary.org.uk

## Precious Paws Pet Care

By Kirsty

Providing loving, reliable pet care for your precious pets in the comfort of your own home, when you're on holiday, at work or just away for a few hours. Regular updates with photos sent to reassure you that your pets are happy and being very well looked after.

**Fully insured, DBS checked, Pet first aid trained  
& CPD certified**

Available all year including Christmas day

**Visits include...**

Feeding & fresh water • Clean litter box/ cages  
Checking for mail • Plant care  
Play and provide lots of love & attention  
Let out for toilet breaks • Provide the at home look by turning lights on/off and pulling curtains

**Contact Kirsty: 07790 153146  
Kirstys.preciouspaws@gmail.com**





## News from Sefton Park School



Sefton Park was delighted to welcome goats, Titch and Crummet, to the school in June. The gorgeous pair are on loan thanks to Street Goat project ([www.streetgoat.co.uk](http://www.streetgoat.co.uk)). The goats will spend a term in school and then a term at a different location before returning to Sefton Park; this is to allow grazing foliage to grow in their absence as they have already eaten a remarkable amount of foliage! Brambles are a firm favourite which has been great to keep the prickly bushes at a low level.

The goats are very used to human interaction having been part of the group on Purdown and have made friends throughout the school. They enjoy having ear rubs and being read stories. They are a great source of learning for the children. In particular there is a fascination with the shape of their eyes which has led to lots of questions about eye types of other animals.

Year 1 had a special visitor on Monday 7 June. A real-life mermaid called Lindsay came to visit as part of their new topic, 'Why is Water Precious?' She told the children about her adventure swimming the Thames and how she helped to rescue a cow! The children then had a workshop with Lindsay to make posters about a perfect planet. Thanks to the PTA for generously donating money towards visitors and trips.



The PTA also part funded the fabulous new climbing equipment in the playground. The school are looking forward to the next phase of a new sandpit and messy kitchen being completed over the summer.

Sefton Park nursery still have a few places available for September, email [seftonpark@bristol-schools.uk](mailto:seftonpark@bristol-schools.uk) to find out more and receive an application form.



**4 – 5**  
**September**  
**2021**  
**11 am to 5 pm**

Venues in Henleaze, Stoke Bishop  
& Westbury-on-Trym

[www.bs9arts.co.uk](http://www.bs9arts.co.uk)



## News from the Goldenhill Community Garden

Hi folks

It's great to be able to say this year that summer is here and there's LOADS going on in the garden (hopefully!). We are running our **Family Adventure days aimed at families with a child/ren with SEN** and their siblings. A happy parent said after the last one "Thank you sooo much Lucy and team for an absolutely fantastic day today – the most relaxing and successful day out we've had for a very long time! The kids absolutely loved it. Can't wait for the next one!".

There will be – baking, harvesting, pond dipping, treasure hunts, sensory play, dens, hammocks, silliness, crafts sitting round the fire and more! We'll be running 11–3 on **Thursday 29 July, Thursdays 12 and 26 August**; £5 per child and £2 for extra siblings, including delicious freshly prepared food for all of you. There are more details on our website and please book places online or give me a ring if that's tricky. No one is turned away due to lack of funds.

AND, we are hoping that we'll be able to have a **Harvest Fair**, and if we can that it'll be on **Saturday 25 September 1–4**. There will be music, pizza,

loads of free kids' activities and we would absolutely love a chance to welcome people into the garden!

As I write this in June **we are now able to welcome new volunteers into the garden on Wednesdays** but we aren't yet running as a drop-in, so please get in touch by email or phone and we can arrange a time that



suits us both for you to come along for an induction. After that, you don't need to come every week or stay all day. We always have a range of jobs to suit different abilities and energy levels. So, if you find it hard to commit to something every week due to changing work schedule or because of health issues then please get in touch if you'd like to get involved. **No previous experience or tools required and you'll get to take home delicious veg every week!** Hopefully see you in the garden!

*Lucy*

[www.thegoldenhillcommunitygarden.com](http://www.thegoldenhillcommunitygarden.com)  
We put frequent updates on our Facebook page: **TheGoldenHillCommunityGarden**

# WILD

wildlife friendly gardening

- **Garden maintenance**
- **Soft landscaping planting & plans**
- **Ponds**
- **Wildlife and climate gardening advice**
- **Based locally in BS7**

[wild-gardening.co.uk](http://wild-gardening.co.uk)



hello@wild-gardening.co.uk

Ring Nik: 07891 119327





## Bee line at Horfield Baptist Church

Members of Horfield Baptist Church (HBC) are replanting their front gardens to add colour and support bees. It is another piece in the jigsaw of traders' planters and patches of garden providing havens for plants and insects along Gloucester Road – creating a 'bee line' or 'pollinators corridor' next to a busy urban road.

Adrian from HBC said: "Creating a bee line alongside the Hope Space on our garden terrace is a winner on many levels. Good

stewardship, good environmentally and a good welcome to hirers, visitors and worshippers. Not meeting together in our church buildings during Covid has been a struggle, but like many we've adapted to meeting online. As we gradually reopen our buildings to hirers and come together to worship later in the summer our focus will be on keeping the gardens green and using our buildings, including the cafe space to best advantage."

**Full details about HBC buildings and activities – including the Hope Space, Sunday Services and Messy Church at [www.horfieldbaptist.net](http://www.horfieldbaptist.net)**



## How Many Butterflies Live in Bishopston?

Community Wildlife Groups across Bristol are trying to answer that question, first posed in 2017 by Bristol's first Wildlife Group in BS3. A handful of people in Bedminster decided to keep a record of their garden visitors and also to monitor a couple of local parks. More people have joined in since then and confidence in recognising different species has grown. The butterfly figures vary slightly from year to year, but the answer for BS3 seems to be c18 species. This compares to the figure for Bristol as a whole which is thought to be in the low to middle twenties and the UK figure of c60 species.

So, what butterflies live in and around Bishopston? Most areas of Bristol will have species like Small and Large Whites and Red Admirals, but others, like Marbled Whites and Small Skippers, need special habitats, usually with long grass, for their caterpillars.

This environment is rarely found in most parks and gardens.

As well as identifying the range of butterflies, the Wildlife Groups that are appearing all over the city, seek to improve habitats to ensure that Bristol has butterflies in the future.

Of course, butterflies aren't the only concern of these groups. They monitor other wild creatures and plants. This includes other insects, birds and mammals such as bats and hedgehogs. Whatever takes your fancy.

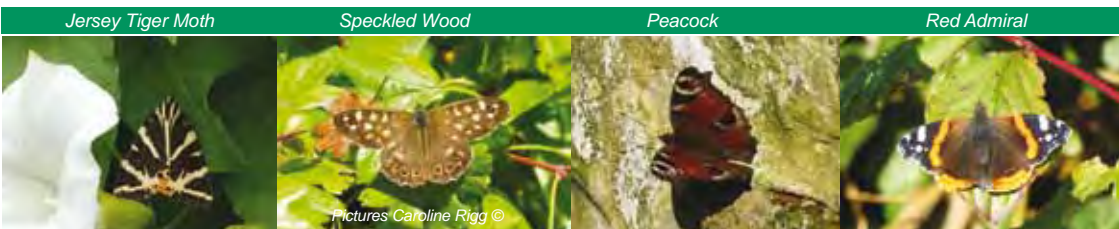
If you would like to join in and want more information about how you can help to monitor and encourage wildlife in your part of Bristol, contact [mywildbedminster@virginmedia.com](mailto:mywildbedminster@virginmedia.com). This group are also organising a Wildlife Photographic Exhibition later in the year; for more information, do email them or watch this space!



**CATHERINE DIXON**  
Committed to gardening organically  
Based in Bishopston

- Garden Maintenance
- Planting Plans
- Design

Est 1997 • Tel: 0117 9095460  
Visit: [catherinedixongardens.co.uk](http://catherinedixongardens.co.uk)  
Email: [info@catherinedixongardens.co.uk](mailto:info@catherinedixongardens.co.uk)



TREE SURGERY - PRUNING AND REMOVALS  
SHRUB PRUNING AND HEDGE CUTTING  
TREE REPORTS AND SURVEYS

# NUTHATCH

TREE MANAGEMENT & CONSULTANCY  
[www.nuthatchtrees.co.uk](http://www.nuthatchtrees.co.uk)

Contact us for a free consultation  
tel: 07866980012 email: [rich@nuthatchtrees.co.uk](mailto:rich@nuthatchtrees.co.uk)



Image - Julian Road, Sneyd Park  
Photo credit - Cryer&Coe

[www.cryerandcoo.co.uk](http://www.cryerandcoo.co.uk)

 [cryerandcoo](https://www.instagram.com/cryerandcoo)

**Cryer&Coe architects**





## Doors blown wide open on local storage company

The term 'self-storage' means different things to different people. To some, it represents a junkyard for forgotten belongings,

to others it acts as a lifeline during periods of transition for both domestic and business users.

Whatever your current perception, Stashed Away will debunk common myths and reveal the truth about their self-storage facility.

You do not need to commit for 6 months unlike renting a house, storage is available for as a short time such as 4 weeks or for as long as it's needed. The modern facility with steel individual units and temperature controlled storage provides a pleasant facility to use.

You can keep almost anything in the unit from a stamp collection to business stock, we offer a range of sizes so you can choose the right one for your budget only paying for the unit for as long as you need it, keeping costs as low as possible.

Security is taken very seriously such as CCTV camera monitoring, alarm systems, coded key fob entry and your unique unit cylinder lock providing only you access to your belongings 7am to 7pm seven days a week.

### Here are some typical reasons for self-storage

- No room at my residence
- I'm moving and I'm between properties at the moment
- I need to declutter to giving me the best opportunity to sell my home
- I run a small business from home and need extra storage space
- I'm separating or divorced and need a place for my belongings now
- My home is being renovated, I need a place clean and dust free

**Stashed Away is a family run business and can be more flexible to suit your needs, we can also provide you with a van.**

**Just off Muller Road, and servicing Lockleaze, Horfield, Bishopston, Ashley Down and St Agnes, this door step storage facility means that it's easy to pop in – when you are passing come in and have a look around or go to our website [www.stashedaway.co.uk](http://www.stashedaway.co.uk) we even have a video.**

## Summer in the Garden

Summer is here and brings with it ever-increasing hot temperatures. The temperate climate of the South West of England is classified as Oceanic, with cool winters, warm summers and rain all year round. Government organisations predict that the South West will experience a rise in temperatures and will become the hottest region in the UK. This type of climate suits tropical plants, with many being very hardy in cold winters.

With this in mind, we need to consider the impact of our use of water in the garden and on allotments. We need to think about using different species of plants that require less water, are drought-tolerant and more robust in extreme weather.

Fig trees suit tropical or Mediterranean-style gardens. They will thrive in full sun with well-drained soil and are easy to maintain. Restricting their roots controls the size of the tree and improves fruiting, making them perfect for containers if you don't have a large garden. The spreading habit of this deciduous tree with its large, glossy leaves is highly ornamental and would be a welcome addition to any urban garden.

Along with Figs, the Chusan and Date palms are hardy plants that give good structure and height to a garden. Clump-forming Black Bamboo is the perfect plant for a tropical look. They are reliably hardy, evergreen, and aren't as aggressive as spreading varieties of bamboo. Fatsia Japonica are vigorous evergreens and will give a jungle backdrop to your garden.

Storing water is also key for the summer garden. Water butts are brilliant; reducing waste rainwater, conserving it and reducing mains water bills at the same time. An all-round winning situation.

A rain garden is a garden of native shrubs, perennials, and flowers planted in a small depression, which is generally formed on a natural slope. It is designed to temporarily hold and soak in rainwater runoff that flows from roofs, driveways, patios or lawns. Autumn is the perfect season for creating a pond, bog garden



or rain garden, so start planning ahead.

Green roofs come in many different forms and types, including extensive, intensive and biodiverse or brown roofs. These terms refer to the degree of maintenance the roof requires. An extensive green roof is a perfect option for a residential garden. It is characterised by its vegetation, ranging from Sedums to small grasses, herbs and flowering herbaceous plants, which need little maintenance and if varieties are chosen well, can be drought-tolerant.

A green roof has many benefits at economic, ecological and societal levels. A green roof provides a rainwater buffer, purifies the air, regulates temperature variability by insulating from cold weather in the winter and absorbing heat in summer, saves energy consumption and encourages biodiversity in the city. Green roofs are a key climate change strategy.

Allow native species to grow in your garden that have adapted to our conditions. Many plants considered as 'weeds' which pop up in our gardens are pulled out, but are in fact perfectly suited. If we all make positive change in our gardens, allowing more flora and fauna to thrive it will not only enhance our enjoyment of life but will also give back to the environment and the beautiful world around us.

Please contact us to discuss your requirements for a free initial consultation: [info@secretgardenweb.co.uk](mailto:info@secretgardenweb.co.uk).

Ali

**1st AZTEC Ltd**

UPVC WINDOWS, DOORS & CONSERVATORIES

**We supply and fit UPVC Sash Windows that can give the appearance of traditional wooden frames, in a range of colours.**

**UPVC Sash Windows require no maintenance and ensure your period property is draft proof, cutting your heating bills.**



Contact us for further information

**Tel: 0117 939 0841**

**E-mail: [info@1staztec.com](mailto:info@1staztec.com)**

**Website: [www.1staztec.com](http://www.1staztec.com)**

### NEED TO STORE YOUR ITEMS WHILST RENOVATING

Keep your items clean & dust free



**[WWW.STASHEDAWAY.CO.UK](http://WWW.STASHEDAWAY.CO.UK)**

Stashed Away, 91a Romney Avenue, Bristol, BS7 9ST  
01179 516325 7am - 7pm, 7 days a week



**39 Horley Road, Sr Werburghs, Bristol**

**Creative Design  
Hard & Soft Landscaping  
Maintenance & Clearance  
Hedges & Trees**

**0117 9092 088 or 0777 9180 855**

**[info@secretgardenweb.co.uk](mailto:info@secretgardenweb.co.uk)**

**[www.secretgardenweb.co.uk](http://www.secretgardenweb.co.uk)**





Image thanks to Paul Bullivant

## News from the Friends of St Andrew's Park

### The Pantaloons are back!

The Friends of St Andrew's Park are delighted to report that, following their hilarious family-friendly performance in 2019, The Pantaloons theatre company (pictured top right) will again be performing in St Andrew's Park on bank holiday **Monday 30 August at 7.00 pm.**

They will be bringing to our wonderful park what is sure to be another evening of quick changes and quick wit in an imaginative interpretation of Jane Austen's classic *Pride and Prejudice* – all laced with the Pantaloons' own brand of wacky humour involving plenty of audience participation as usual.

The performance will take place on the gentle slope to the west of the play area and families are welcome to bring a picnic and something to sit on. Tickets will be limited and subject to any Covid regulations at the time so book early to avoid disappointment. Tickets are reasonably priced and are available from the Pantaloons' website: [thepantaloons.co.uk/pride-and-prejudice](http://thepantaloons.co.uk/pride-and-prejudice)

For further information contact the organiser for The Friends – Paul Bullivant: 07849 952649 / 0117 9245200.

### Update on the new St Andrew's Park perennial meadow

In the April round-up of news from Friends of St Andrew's Park, the exciting proposal to develop a perennial meadow at the southern end of our lovely park, running parallel to Leopold Rd, was highlighted.

Creating such a meadow is important, not only in the wider context – given that 95% of our native flower meadows have been lost in the UK over the last 75 years – but also in increasing the biodiversity of our much-loved park. This will create not only a variety of wild flower displays, but also will attract butterflies, bees and other insects.

Timing was affected by some mechanical problems with the tractor, meaning that, although much of the rotavation work has now been done, not all of the final preparation and seeding has been able to be finished within the period when seeding can be done. However, we have made a big step forward in creating the meadow, and it will evolve and change as it develops over the next few years. Temporary fencing will be in place for the next month or so to help protect the seedlings.

A wide range of seed has been sown, including red Campion, Cowslip, Red Clover, Ox Eye Daisy, Poppy, Cornflower, common and Greater Knapweed, and many others. The meadow will be cut back in winter, late enough to make the most of late flowerings and seed heads which provide important food for birds and insects.

Some summer weeding will be necessary, particularly in the early years, and also some further seeding may need to take place next year. **To help with weeding, work parties are planned for the fourth Sunday of every month at 10.30: 27 June; 25 August; 26 September; 24 October;** do get in touch via our website or just turn up if you would like to join in.

### People's memories & history of the park

**The FoSAP will be displaying the people's memories and the history of the park on 30 August, 12.00–5.00 pm.** The display will be by the theatre area in the park, where the Pantaloons are performing *Pride and Prejudice* in the evening. We are still looking for more memories if anyone would like to email theirs to Jenny Broe at [jennybroe2008@yahoo.co.uk](mailto:jennybroe2008@yahoo.co.uk). We look forward to seeing everyone on the day.

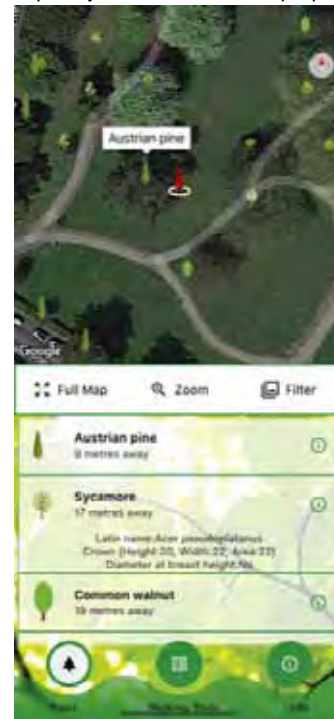
### Tree App – by FOSAP Jonny

As a regular user of St Andrew's Park (with my very own 'the usual' from the Tea Garden!) I've become aware that I don't know very much about the

permanent inhabitants of the park, the 192 trees. Which ones are tallest, oldest, most rare, or most common? Using the data provided by the council through OpenData Bristol I created a smartphone app that maps all the trees and tracks the user as they walk through the paths and green areas telling them a little about the trees nearest to them, with the ability to filter by species and getting a real feel for the natural patterns.

It's in its early stages but I've released it on the iPhone and Android app stores for people to play with it and get some early ideas and feedback. Search: Park App St Andrews

Included are some planned walking trails which hopefully add some fun and purpose to a stroll



around the canopies and open spaces. All ideas are welcome, perhaps some games? I plan to add some user interactive features, as soon as my kids decide which is the least embarrassing pun 'Tree Trunks or Top Trunks' :) Contact Jonny: [info@jagprojects.com](mailto:info@jagprojects.com).

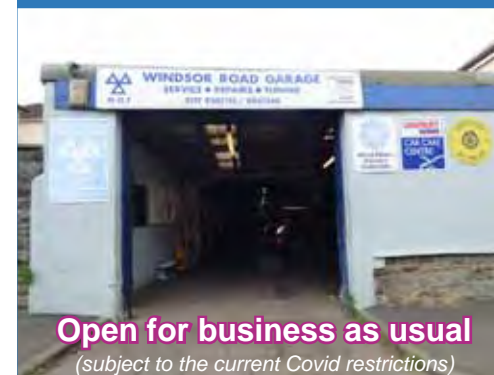
This App is designed to be perfect to find out info on the trees when you are on the go and suggest some interactive activities. The FoSAP have always always taken a keen interest in the impressive tree collection in the park and there is a section on their website dedicated to them if you would like to do some further reading and find out more.

**Love our park? Why not join us?** If you would wish to be involved in any of the above projects or in the work of the Friends of St Andrew's Park generally, you would be very welcome. Please contact us through our website.

[www.friendsofstandrewspark.ning.com](http://www.friendsofstandrewspark.ning.com)

## Windsor Road Garage

Family business est 1964



**Open for business as usual**  
(subject to the current Covid restrictions)

**Serving our community  
for over 50 years!**

- Car Servicing • MOT Testing
- Vehicle Repairs
- Classic Car Maintenance
- AA accredited garage

**Get in touch with this trusted,  
friendly team, to book in  
call 0117 924 7113.**

Open Mon – Fri: 8.30 to 17.30,  
Sat 9.00 to 12.00.

Windsor Road Garage, Windsor Rd,  
St Andrews, Bristol, BS6 5BP

[www.windsorroad.co.uk](http://www.windsorroad.co.uk)

**Now equipped to service the new  
1234yf Air Con Gas**



Motor Industry Code of Practice for  
**Service and Repair**



## News from CG2

### (Cricket Ground Community Group)

Many of us will have visited the cricket ground for a vaccination rather than to watch cricket, but after playing the early season behind closed doors, fans are now back.

Unfortunately, it was not possible to hold a pre-season residents meeting this year, but local neighbours will have received a newsletter with information about forthcoming matches, including how GCCC will mitigate the impact on its neighbours when larger crowds are expected.

The two key events to note are Gloucestershire v Somerset T20 on Thursday 1 July and England Men v Sri Lanka Men on Sunday 4 July. At the time of writing, exact numbers are not known, as they will depend on lockdown easing, but current estimates are 8000 plus. The T20 is an evening game and the floodlights will be used.

There will be a traffic management scheme on both days. Nevil Road and Arthur Milton Street will be fully closed and stewarded, and resident passes enabling access will be distributed in these streets – something CG2 pushed for successfully in 2019. Adjacent roads will be signed as 'road ahead closed', with stewards in place to manage traffic access – so proof of address might be useful for residents of these roads.

Join the CG2 mailing list! Joining the CG2 mailing list gives you information and news on issues at the Cricket Ground which may affect you as a local resident. Whether you have lived in the area for a while or are new to it, please consider joining us so that we can let more people know about developments at the Ground and keep GCCC informed about how their activities impact residents and the area. Email us at: CG2bishopston@gmail.com.

We are also pleased to report that the club has now set up a residents' webpage [www.gloscricket.co.uk/local-residents](http://www.gloscricket.co.uk/local-residents) which will keep neighbours up to date with cricket and other club developments.

## ALL GARDENS



TO ALL  
PEOPLE

**SMALL GARDEN SPECIALISTS**  
**25 YEARS EXPERIENCE**  
**BASED IN BISHOPSTON**

**Phone Pete 0117 9421 685**

**e-mail [peter@allgardens.co.uk](mailto:peter@allgardens.co.uk)**

**visit [www.allgardens.co.uk](http://www.allgardens.co.uk)**

**All Garden Craft DESIGN**

- Garden Clearance and maintenance
- Garden make-overs
- New Lawns
- Fences/stone walls
- Patios & Decking
- Ponds
- Tree pruning

## Something for everyone at B&A

At B&A, your local church, we are all about following Jesus together and making a difference in the lives of others. For us this means that, while our church building has been closed for part of this past year, we've still been very busy meeting together and helping others. There's so much we are involved in and you are invited to it all!

On Saturday Mornings from 10.00am to 11.00am we open our Food Pantry at B&A Gloucester Road. The Food Pantry collects donations of food that is used in community meals, food parcels and food banks across the week. Every week, members of B&A support local families with deliveries of food and other items.

During the week, on Tuesday and Wednesday mornings at 10.00am, our Piglet Toddler Group is a great space for little ones and their parents or carers to

come to play and be with one another. After a year of being alone it is great to be able to be with others. Wednesday night, from 5.30pm, we open up Soul Food; our community meal for anyone who wants to come along and share great food and company.

We continue to run both The Marriage and Alpha Courses online. These are great tools to invest in your relationship (The Marriage Course) or ask the big questions of life (The Alpha Course).

As a church we are made up of Little Churches. Smaller groups that support one another and together make a difference in the lives of others. We like to think there is a Little Church for everyone. On Sundays at 10.00am we meet together at B&A St Andrew's Park to hear stories of what God has been doing, celebrate who God is, learn more about Him and pray for one another and the needs of our world.

**If you'd like to find out more about your local church check out our website [bachurchbristol.org](http://bachurchbristol.org) or follow us on social media @bachurchbristol.**



**BROOKFIELD  
MOBILITY  
SOLUTIONS**

BMS is proud to be a **Mobility Adaption Partner** and installer of adaptations available on the Motability Scheme as well as a **Motability Recognised Repairer** and installer of Wheelchair Accessible Vehicles (WAV).



**What can Brookfield Mobility Solutions bring to you?**

- Professional, friendly customer focused team with a wealth of experience in the adapted vehicle and adaption market.
- Suppliers of mobility scooters and wheelchairs. BMS can also supply and fit a stowage system (boot hoist) so that you can stow your scooter/wheelchair into your car.
- Advice and installation of vehicle aids to include – Push-Pull hand controls, Left foot throttles, Scooter, wheel chair and personal hoists, Control aids, Electronic signalling.
- Advice and installation on a range of mobility aids, including stairlifts.
- Wide range of daily living aids available in store.

For full details of BMS's services and product range, please book a visit to their showroom.  
**30-32 Filton Road, Bristol, BS7 0PA • Tel: 0117 239 5018 • [www.brookfieldmobility.co.uk](http://www.brookfieldmobility.co.uk)**





## D.C.L MOTORS

Mechanical Repairs • Welding • Servicing • M.O.T Work

- Full M.O.T service
- Top quality car maintenance and repairs
- All makes and models
- Great value prices
- Hundreds of satisfied local customers
- Workshop set up to facilitate small vans
- Servicing cars since 1997
- Owned and managed by Dave Lovell with over 30 years experience
- Local, family business



Open:  
8.30am – 5.30pm Monday to Thursday  
8.30am – 4.30pm Friday

**Tel: 0117 908 0081**

138 Gloucester Road (although situated at the bottom of Egerton Road), Bishopston, BS7 8NT

*"We have remained open for business as usual through lockdown and will be continuing to do so unless the rules change and we are forced to close."*

*Thank you to all our customers for your continued support"*



I ♥ MY PC

Trusted, local, independent computer store and workshop

- PC & laptop repair services
- Refurbished PCs & laptops
- PC Hardware & Peripherals
- Custom built PCs
- Free counter service
- Friendly customer service



**www.ilovemypc.co.uk**

Open: Monday – Saturday 9am – 6pm

**0117 9248755 • Sales@ilovemypc.co.uk**

207 Gloucester Road, BS7 8NN I Love My PC Ltd



**4.8 \*\*\*\*\* Google reviews**

'Friendly and helpful staff who went above and beyond to fix my laptop quick sharp! Many thanks!'

**4.5 \*\*\*\*\* Facebook reviews**

'Very helpful, very informative, quick turn around and reasonably priced. Would highly recommend to others. Thank you so much'

## News from the Friends of Bishopston Library



Bishopston Library has been really well used since it opened just over four years ago, and even during the pandemic libraries have proved extremely popular, with a wide range of online offerings. Sadly, there was no fourth birthday event this year, but let's hope for something extra special next year!

The Library is open to collect reserved or ordered books using call and collect on 0117 3576220. It is also open to pick up a 'lucky dip' book bundle: these are selected by library staff in a variety of categories for adults and children, you don't need to pre-book.

At the time of writing, there is no definite news about full re-opening, but staff and Friends groups are keen to get back to normal. **Join friends@bishopstonlibrary.org.uk** to be kept up to date with Friends of Bishopston Library events and activities. Hopefully we will see you again before too long.

### CALLING YOUNG PEOPLE IN BISHOPSTON!

We are delighted to have one activity underway, funded by the Bristol Libraries Innovation Fund and provisionally called 'A series of talented events'. This is an exciting project for **young people aged 17–23**, providing an opportunity to develop and display your talents in areas such as creativity, technology or the environment.

We are looking to recruit a small group of young people keen to volunteer some time to help shape and deliver the project. This **Ambassador Team** will have a vital role to play in its success, bringing ideas, networks and talent. Plus, you will gain project management skills, boost your confidence – and add value to your CV.

Does this sound like you, or someone you know? You don't need to be a current library member or user, just someone with ideas and enthusiasm. As well as attending a couple of meetings over the summer, you will need to be around in the autumn when the workshops, events or activities will take place. Whether you're working, in college, sixth form or university, if you're interested, just send us an email with 'Ambassador' in the subject line.

Please say a bit about yourself, including your age and current situation (where you are studying or working), plus any areas of particular interest. Please email **friends@bishopstonlibrary.org.uk** by 30 July and we will get back to you.

**The library can be so much more than a place to borrow books or study – this is your chance to show just how much more it can be – this project needs YOU!!**

### Calling on the 'experienced' people of Bishopston!

To manage this work, we are looking for a part-time **co-ordinator** to facilitate the Ambassador Team and support the project. We need someone with experience of working positively with young people, who understands that success will depend on the young people themselves owning, informing and shaping the work.

We anticipate this requiring approximately 45 hours work between July and December 2021.

**For further information about the project and application details, contact: Friends of Bishopston Library friends@bishopstonlibrary.org.uk**



### Home Library Service Bristol



If you can't get to the library due to mobility, disability or caring responsibilities and you would like a monthly supply of library books delivered to you

at home, please contact **Bristol Home Library Service** on **07714 898 558** or email **janice.walsh@royalvoluntaryservice.org.uk** Available to any Bristol resident over 18.

*If you have concerns about Covid-19 our volunteers will offer a doorstep delivery to ensure your safety.*

Registered Charity 1015988 Registered Office: Beck Court, Cardiff Gate Business Park, Cardiff CF23 8RP





## News from Goldenhill Sports

Sporting activity returned at Golden Hill Sports when the first Covid-19 restrictions were lifted on 29 March, with **Golden Hill Sonics** (the youth football club) cramming in as much football as they could before the cricket season started in mid-April. The Sonics cater for children of all abilities with places for 20 per age group from Under 7s all the way up through to Under 16s.

Despite the cold weather there was no lack of interest from the **men, women, boy and girl cricketers** who all welcomed the opportunity to practice and play again with their team mates once restrictions were eased still further on 10 April. The club has grown considerably in size over recent seasons; we are able to field 8 sides most Saturdays in addition to the 20 plus youth teams from under 11s to under 19s and the women's side who take to the field during the rest of the week. An artificial pitch has now been installed to help meet the demand of so many matches.

On 17 May, we were able to re-open the **refurbished function room** in the pavilion to outside user groups for the first time. The room is available to hire and there are spaces in the diary to fit in with the present community users such as Pilates, art sessions, bridge clubs, yoga, ballet and dance lessons for children. Further information can be found on the website at [www.goldenhillsports.com](http://www.goldenhillsports.com) or by email at [social@goldenhillsports.com](mailto:social@goldenhillsports.com) if you would like more

information on how to join or use the facility.

Weather permitting (and subject to all restrictions being removed by then), we are planning to hold **community BBQs** at the ground on the evenings of both **Friday 25 June** and **Friday 16 July**, when all are welcome to come along and enjoy an evening in the club grounds.

We are continuing to make arrangements for **Party in the Park 2021** which is being held on Saturday 11 September, starting at 1pm with the usual mix of activities, attractions, live music, demonstrations, stalls and refreshments for all the family during the day and early evening, and a firework display to round things off at 8pm. If you would like to book a pitch for a stall, please [email comms@goldenhillsports.com](mailto:email_comms@goldenhillsports.com) and we will send you an application form.

[www.goldenhillsports.com](http://www.goldenhillsports.com)



U11 girls after their win at Carsons & Mangotsfield

# Alpine Landscaping

Established Family Firm with over 30 years' experience

## Senior Citizens Special Rates

- Garden Clearance - Regular or One Off
- Patios
- Fencing
- Tree Work
- Turfing
- Hedgecutting
- Planting (Shrubs etc)
- Organic Manure Delivered - Also applied
- Professional and Guarantee Work
- Brick and Blocklaying

**Call Joe for a Free Quote 0117 959 2143 / 07891 253 122**

[www.alpine-landscaping.co.uk](http://www.alpine-landscaping.co.uk)

**25% Off**  
with this advert!

## Purdown Heavy Anti-Aircraft Battery

BHA local history research – Andy Buchan ©.



Within Stoke Park (next to the iconic phone tower) lie the remains of part of Bristol's defences against German aerial attack from the Second World War; this was the Purdown Heavy Anti-Aircraft (HAA) Battery.

The battery formed part of a ring of similar defences

around Bristol intended to protect the docks at Bristol and Portbury and the airfield and aircraft works at Filton. Around the greater Bristol area were a number of fixed batteries, like Purdown, and also mobile batteries.

The remains, which carry an English Heritage listing have bushes and trees growing out of them (although the street goats are currently doing a great job tidying up the overgrowth) and are covered in graffiti, but the buildings and the places where the anti-aircraft guns were located can still be seen.

Nearly 1000 similar sites were built during WW II, but fewer than 200 survive and Purdown is considered to be in a reasonable state of preservation.

Bristol was protected by a 'ring' of twenty HAA batteries of which six survive in varying states of preservation.

The site started as a mobile site in November 1939, before being converted to a permanent reinforced concrete and brick-built battery with four octagonal gun emplacements, integral ammunition bays, blast walls and shelters in June 1940. Also present at the complex were a command post and other associated buildings. Two square gun positions with magazines



were added later.

The static guns used were 3.7-inch anti-aircraft guns, and when the original four fired together the

noise reverberated around the area and gave rise to a local story that there was a huge gun, named 'Purdown Percy', at the battery.



The site continued in operation through the war until the end of 1944, when it was taken out of use, and it was decommissioned in 1946.

As with many MOD sites it is not shown on maps of the time, but the site is clearly visible on aerial photographs taken during and after WWII.

The aerial photograph above was taken in 1946, when the site was being decommissioned. The key to the aerial photograph is as follows: **1-6** are the main heavy anti-aircraft gun emplacements. **C** is the Command Post Complex.

**M1** and **M2** are the magazines.

Only the major buildings and guns are marked; there were also five small gun positions.

Gun emplacements 1-4 were built first and were octagonal, with six ammunition lockers. The walls were concrete, with brick inner walls. The outer walls would have been surrounded by earth embankments. There were also two concrete crew shelters in each emplacement.

In the middle of the emplacements stood the guns; the points where these were bolted down may still be seen. Gun emplacements 5 and 6 were added later during the war; these are square and were



made of breeze blocks.

The command post complex, which is made of concrete, was

situated within the centre of the original four guns and consisted of the Command-and-Control Building, the Predictor Enclosure, Radar Enclosure, Observation Post and Shelter or Store.

Behind the Command Post complex stand the two magazines; these are two sunken concrete buildings that were used to store all the ammunition. Ramps run down into the buildings. Each magazine is divided into five bays and there were steel doors between each of the bays.



# News from Ashley, Bishopston & Ashley Down, & Redland Councillors



LtoR Tim, Jude & Amirah

## Ashley Down ward

We just wanted to introduce ourselves briefly to you as your new councillors for Ashley. But firstly, a massive thanks for all who voted, whoever you put your cross against. Ashley had a 48% turnout which is excellent for a local election. And secondly a vote of thanks to Carole Johnson and Mike Davis, the outgoing councillors.

You will already know Jude English who was re-elected for the Green Party. Jude has already been working in Ashley for five years and been involved in a number of community initiatives including a trustee at the City Farm and involved in St Paul's Adventure Playground.

The new councillor for the Green Party is Tim Wye. Again, Tim is a long-term Montpelier resident and involved in numerous community activities such as organising Picton St Fayre. Among other things Tim has a background in health and social care and will be looking to champion that in his role. Tim has taken up some of the recent conversations about the St Andrew's Park Police order consultation that was pulled. Like a lot of residents we have spoken to around the park thought, the order was clearly excessive; but we do need to acknowledge the legitimate concerns of those residents. We need to take this forward with all the stakeholders.

Amirah Cole is a first-time councillor for the Labour Party. Amirah is committed to making a difference in Ashley where she grew up, lives and raises her children. She aims to empower residents and has been a community organiser and activist for many years, with a wealth of experience in campaigning to protect community and environmental assets i.e. Malcom X Community Centre, St Paul's Afrikan Caribbean Carnival and Save the Maples campaign.

While we are from different parties we want to work together for Ashley. We have already met and will be co-ordinating our efforts (for example we have agreed to hold joint surgeries) and will

work together on core issues raised with all of us throughout our campaigns: traffic, pollution, rubbish and community safety being the main ones we will be pursuing.

Jude, Tim and Amirah

**Amirah Cole, Labour Party**

Cllr.Amirah.Cole@bristol.gov.uk

**Jude English, Green Party**

Cllr.Jude.English@bristol.gov.uk

**Tim Wye, Green Party**

Cllr.Tim.Wye@bristol.gov.uk



Emma Edwards & Lily Fitzgibbon

## Bishopston ward

It has been a busy but enjoyable first month, and we are both glad to be settling into our new roles. Thank you for your patience if you have been in contact.

We were delighted to hear that Ashley Down Oak will no longer be felled, and that a solution which works for everyone has been found. We will be continuing to put pressure on the administration and the mayor for updates and confirmation that any work that takes place will not cause long-term damage to the tree. Emma has also been consulting with Bristol Tree Forum about wider tree coverage across Bishopston – how to preserve and increase it. If you know of any street trees that have been removed in the area and are yet to be replaced then do get in touch.

Thank you to everyone who got in contact with us regarding the public consultation for a PSPO on St Andrew's Park. This proposed a ban on alcohol and groups of more than three after 9pm. We have been working with councillor Tim Wye on this issue as the park is situated in Ashley ward. We know that the park is the main green space for many residents, and we shared your concerns about the extreme nature of the proposals. Fortunately, the council has now U-turned on the PSPO but it has been great engaging with local residents about what the park means to them. We are very aware about the issues surrounding the park, particularly to do with noise pollution and litter, and we hope that a wider discussion can now be had to address them.

We held our first surgery on 4 June at Horfield Common, and will be continuing to hold them monthly. We would love to meet you all so please come along to share your issues, or just to say hello! We will be outside the Ardagh on the first Friday of every month at 4pm. We will also be holding a monthly litter pick! All ages are welcome, and we can provide equipment – locations will be provided closer to the time. This will take place on the third Friday of the month.

If you want to join our litter pick, or to get in contact with us about anything, please do email.

**Cllr Emma Edwards, Green party**

cllr.emma.edwards@bristol.gov.uk

**Councillor Lily Fitzgibbon, Green party**

Cllr.Lily.Fitzgibbon@bristol.gov.uk



Fi Hance and Martin Fodor

## Redland Ward

The election dust has settled and we're both proud and delighted to be voted your two ward councillors

again. Thanks for your massive vote of trust and support in choosing us again. We shall both aim to represent the ward effectively and work with others to make a positive difference to the city. The turnout in Redland ward was over 56% for the council seats (in fact surprisingly 6% more ballots were cast than for the Mayoral election) which was one of the very highest in the city. Our majorities tripled to over 1500 more votes than the nearest Labour candidate and the vote share went up.

We're proud and honoured to be local representatives on the council until 2024. The fact people all over the ward know our names and have been thanking us for our hard work, the help and support, and being active on their behalf over the years, is truly rewarding.

Hearing your views and representing the area – Calling on thousands of residents has been a pleasure, despite the staggering number of steps taken. We've of course heard much more about your local concerns and issues, from planning to parking, traffic and air quality to tree protection. Plus, the need for the council to do much more to tackle the climate and ecological emergencies. Across the city the number of Green councillors grew from 11 to 24 elected we're now the top equal party and we hope to be a powerful influence for real action.

Looking after the ward – We've reported various issues like the continuing water leak where Berkeley Rd meets Gloucester Rd, and the dangerous retaining wall holding up Redland Green.

We supported residents in Belvedere Road to challenge a revised application to extend another care home adding to the traffic, parking, and community pressures in their narrow road (which has all the care home beds in the entire ward), and we're glad at the unanimous committee vote to support an officer recommendation to reject the proposal.

We're still waiting for news of the controversial development of Housing in Multiple Occupation in the ward – we've ensured an application will be heard at a planning committee if it's recommended for approval.

Another tree being lost – We also liaised with the council tree officers to call for proper scrutiny of a planning application to cut down a mature tree on the banks of the Cranbrook by Elton Road. The river bank appears to be outside council or private ownership but is part of a conservation area. We've drawn attention to the benefits of mature trees, the need for stable river banks to provide flood protection, and the council's declaration of an Ecological Emergency.

We don't think this case has been dealt with well; the council clearly needs better joined-up policies and procedures in place to manage and protect mature trees and take account of its commitments to the climate and ecological emergencies, and the flood and nature benefits of green spaces and wooded river banks.

A crossing in sight at last! Meanwhile we have positive news at last as, just before the election, we heard from newly recruited officers who have finally started work on drawing up plans for the long-awaited crossing of Cranbrook Road at Harcourt Hill. This project – designed to ensure a safer route to school over this fast and wide road – has already been budgeted for but hadn't progressed since we secured its approval in late 2019. We hope there will be proposals for consultation before long.

Contacting us – As always, we're happy to deal with issues you report to us. Please be a little bit patient if some things take a little longer for a while as our office is overwhelmed with supporting our new colleagues get to grips with council systems and we're helping them make sense of everything.

And do note our official council emails and numbers below – not the election contacts we used during the campaign period.

**Fi Hance, Green Party**

cllr.fi.hance@bristol.gov.uk / 0117 3534720

**Martin Fodor, Green Party**

cllr.martin.fodor@bristol.gov.uk / 07884 736101

**Facebook.com/cllrmartin.fodorand /cllrfi.hance**





# James Antony FLOORING

James Garland and Antony Egan collaborate to make James Antony Flooring – a professional flooring company that fits Carpets, Luxury Vinyl Tiles, Laminate Flooring, Vinyl Flooring and Artificial Grass. They are proud to offer their customers excellent service at a competitive price. They offer discounts to OAPs and NHS workers, and promise to beat any like-for-like quotation on Carpets, Laminates and Vinyls.

Antony lives locally – when we caught up it was great to hear the passion and enthusiasm in his voice, he told me, “I enjoy meeting with customers and making their flooring wishes come true.”

When you get in touch for a free quote, Antony or James will be happy to visit you to measure up, bringing with them a huge selection of flooring samples. You can then leisurely look through the samples and select your desired flooring from the comfort of your own home.

Antony shared, “We enjoy fulfilling a wide range of jobs from individual domestic rooms to entire three storey homes, and businesses. We share 20 years of flooring knowledge with our clients and understand that detail is key to customer satisfaction. We invite people to visit our **Facebook page: jamesantonyflooring** to read our outstanding customer reviews and view the range of projects we work on.”

If you would like to discuss your flooring project do get in touch –

**T: 0117 401 0912 | M: 07584 674101**

**E: jamesantonyflooring@gmail.com**



# James Antony FLOORING

- Carpets • Luxury Vinyl Tiles • Laminate Flooring
- Vinyl Flooring • Artificial Grass

**We'll beat any like  
for like quotation  
on Carpets,  
Laminates and  
Vinyls**

- Over 20 years' experience
- All work carried out guaranteed
- Free measuring and estimating service
- Quality flooring at competitive prices

**OAP & NHS  
workers  
DISCOUNT**

**Find these and more glowing  
reviews on Facebook**

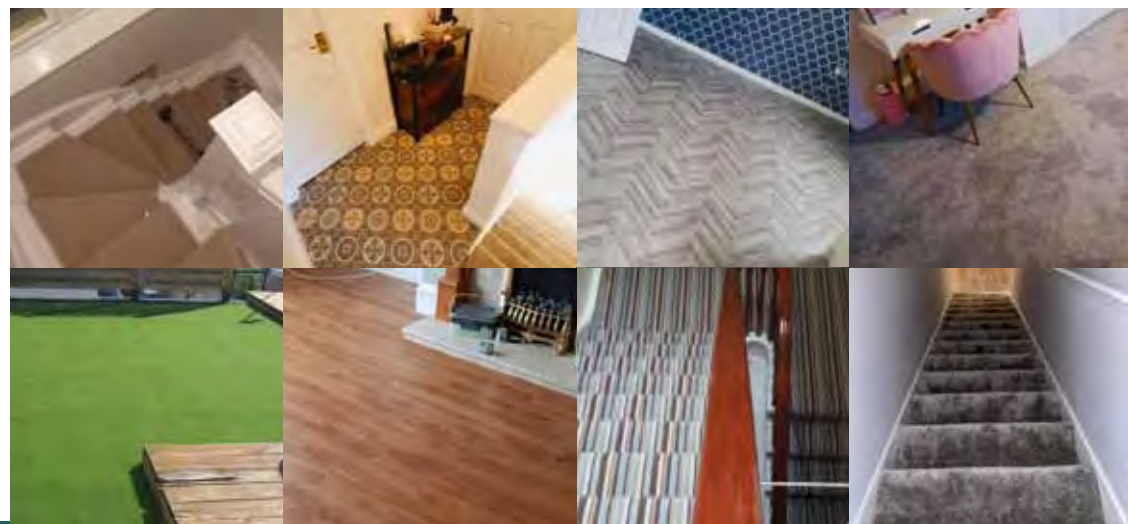


**jamesantonyflooring**

“Fantastic service from start to finish with James Antony Flooring. So pleased with how the bedroom and en-suite turned out. Will definitely use again in the future.”

“Professional from start to finish, very competitive prices and excellent customer service, highly recommend!”

“Can't fault this company in the slightest. From start to finish, they have been absolutely amazing! Nothing is too much trouble for them.”



## High Quality Construction

Expand Building is a Bristol based building company with an excellent reputation. Delivering high quality construction.



**Find out more**

**www.expandbuilding.co.uk**

**0117 959 1777**

**We specialise in: high specification extensions**

**07813 328 387 | 07972 577 827 | email: info@expandbuilding.co.uk**

Expand Building, 124 Falcondale Road, Westbury on Trym, Bristol BS9 3JD | Company Registration No. 7933161



## Electrical and Plumbing



All electrical work - from complete rewire to additional sockets  
Domestic plumbing and tiling - showers, undertile heating etc.  
City & Guilds and NVQ. Part P compliant.

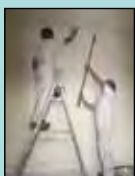


Free estimates - Call to discuss your requirements

**Matt. Pederick - 0117 9246886 or 07958 753588**

## AMA & JILL DECORATORS

*Let the women spruce up your interiors*



- 20 years' decorating experience
- Painting walls, ceilings, wood
- Wall-papering
- Stripping walls, wood, metal

A risk assessment for Covid-19 will be done for each job and appropriate social distancing and protection will be taken.

**T: 07907 584566 or 0117 239 8276**

**E: amajilldecorating@gmail.com**

call now for  
a free quote

## A&P Plastering Specialists

All aspects of plastering...

- **Skimming over artex • Coving • Artexing**
- **Small jobs welcome • Plaster boarding**
- **Over 25 years of experience**
- **Clean and professional service**

Contact - Philip Rogers or Philip Winter

**Tel: 0775 9255438 / 0772 2160270**

**0117 9425762 • Radnor Road, Bishopston**

## BRISTOL BUILDING COMPANY

Quality Building Solutions

- Extensions
- Kitchens
- Bathrooms
- Roofing
- Electrics
- Plumbing
- Refurbishment
- References available

Locally based, family-run, established for over 35 years

"My tired old house has been transformed into a fantastic home for my family." Joanne, Bishopston

"We have found the workmanship completed to a very high standard. I would thoroughly recommend the company to all." Mary, Horfield

"Dale's team were friendly and professional and the work was done faster than we expected, to a very high standard." Cher, Ashley Down

**Tel: 0117 952 1944 Mob: 07977 116842**

Email: [bristolbuildingco@yahoo.co.uk](mailto:bristolbuildingco@yahoo.co.uk)

[www.bristolbuildingcompany.co.uk](http://www.bristolbuildingcompany.co.uk)



free quotations  
serving Bristol and surrounding area

## Charnick Electrical

- re-wires
- additional sockets
- landlord reports
- inspection and testing
- fuse board upgrades
- fire alarm installation
- security alarms
- emergency call out

**M: 07967563298 H: 01179557227**

[www.charnickelectrical.co.uk](http://www.charnickelectrical.co.uk)  
[leroy@charnickelectrical.co.uk](mailto:leroy@charnickelectrical.co.uk)



## COLLINS TREE SERVICES

Free quotes Fully insured

Pruning Hedge Trimming  
Felling Stump Grinding Planting

All work considered All waste recycled  
Friendly and professional service

**0752 591 6882 0117 965 8399**

[info@collinstreeservices.co.uk](http://info@collinstreeservices.co.uk)

## Advanced Decorations

**Peter McGahan**

**07805704901**

**0117 9556198**

- Over 30 years experience
- Interior and exterior decorating to a high standard
- Advice on colour schemes
- Wallpaper specialist
- Free consultation and written estimate with no obligation.
- No VAT as sole trader

[advanceddecorations.co.uk](http://advanceddecorations.co.uk)

[info@advanceddecorations.co.uk](mailto:info@advanceddecorations.co.uk)

## ROB'S PROPERTY MAINTENANCE



For all those jobs that  
still need doing...  
I am here to help!

Building & Property  
Maintenance  
Handyman  
Plastering • Rendering  
Decorating • Tiling  
Plumbing • Bathrooms  
Fascia/Guttering  
Gardening/Fencing  
Sash windows

**ROB: 07891 450 047**

[robspropertymaintenance@yahoo.com](mailto:robspropertymaintenance@yahoo.com)

## FULLY FITTED ROLLER GARAGE DOORS

FROM **£895** \* WAS £1,050 INC VAT

### WHATS INCLUDED:

- ACOUSTIC & THERMAL INSULATION
- TWO REMOTE CONTROLS
- EXPERT MEASURING & FITTING
- 24 COLOURS AVAILABLE

**GAROLLA**  
ROLLER SHUTTER DOORS  
[www.garolla.co.uk](http://www.garolla.co.uk)

Garolla can save a lot of space inside your garage. Rolls up vertically into a box. Takes only 8 inches of head-room! Opens vertically so you can park up close to the door. Remotely open/close the garage even from inside your car.

Made To Measure...  
**ROLLER GARAGE DOORS**

CALL US TODAY

Phone: **0117 369 1061**

Mobile: **07537 149 128**



 **PEAR TREE**  
BUILDING &  
PLASTERING SERVICES



We are a family run business, based in Bishopston, who undertake all kinds of building work

We strive to reduce waste, recycle materials and improve efficiency

Lots of examples of our work and customer feedback can be found on our website  
[www.peartreeplastering.co.uk](http://www.peartreeplastering.co.uk)

For an honest, free and friendly quote call Rich on:  
**07976 209 305 / 0117 9500 597**

**TWO TONE**

**DECORATING & BUILDING SERVICES**

For decorating projects call  
Steve: 07442 017446 or Mike: 07989 507143

For building projects call  
Terry: 07990 983277

**JPK PLUMBING**

From a dripping tap upwards  
Reliable, qualified, fully insured

Phone: John Keegan  
125 Bishop Road, Bishopston, BS7 8LX  
[elfontanero@hotmail.co.uk](mailto:elfontanero@hotmail.co.uk)  
[www.jpkplumbingbristol.co.uk](http://www.jpkplumbingbristol.co.uk)  
**07900 582 817 • 0117 924 7286**

 **MD Aerials**  
Call Michael Dagger

T: 01454 418 341 M: 07817 304 236  
[mike@mdaerials.co.uk](mailto:mike@mdaerials.co.uk) [www.mdaerials.co.uk](http://www.mdaerials.co.uk)

All types of aerial and satellite work undertaken including:

- Aerial Installations
- Reception problems
- Additional room feeds
- TV wall mounting
- Setting up and tuning
- CCTV
- Wi-Fi access points
- Free Quotations

Over 30 years experience

**AFRESH GARDENS**

For a quality comprehensive service

**Landscaping services • Maintenance**  
**Make overs • Commercial & Domestic**

Free quotes, no obligation

Contact Chris Knowles, RHS Advanced NCH Hort  
T: 07794 701 637  
E: [christopher.knowles@mypostoffice.co.uk](mailto:christopher.knowles@mypostoffice.co.uk)

**FAMILY BUSINESS** **FAST RESPONSE** **AN WORK GUARANTEED** **DAP DISCOUNT**

 **M.J. Harris**  
Domestic Repairs

**PLUMBING**  
FULLY QUALIFIED

**EXPERTS IN REPAIR, SERVICING & INSTALLATIONS**

**BOILERS**  
GAS SAFE & OFTEC REGISTERED

**ELECTRICAL**  
NICEIC APPROVED CONTRACTORS

**DRAINAGE**  
NIAA APPROVED COMPANY



BOOK YOUR BRISTOL ENGINEER NOW!  
**0117 428 1091**

**M<sup>c</sup>CALL**  
PLASTERING SERVICES  
EST 1976

- ALL ASPECTS OF PLASTERING UNDERTAKEN
- OVER 30 YEARS EXPERIENCE
- INTERIOR & EXTERIOR WORK
- QUALITY WORK
- COMPETITIVE RATES

**Call: 0117 949 0147**  
**07909 937 229 or 07970 596 260**  
[mccallplastering@hotmail.co.uk](mailto:mccallplastering@hotmail.co.uk)

**renovate**  
building & maintenance

**design & build**



0117 969 2740  
07515 945 992  
[info@renovatebm.co.uk](mailto:info@renovatebm.co.uk)  
[renovatebm.co.uk](http://renovatebm.co.uk)

 **FEDERATION OF MASTER BUILDERS**  
EST. 1941  
[fmb.org.uk](http://fmb.org.uk)



# Price Glass

**WINDOWS • DOORS • CONSERVATORIES • EXTENSIONS • KITCHENS • BATHROOMS**

Incorporating P G & G Building Services

**Fensa registered Glass Experts • Glass installed with care  
10 year insurance backed guarantee on PVC Doors & Windows  
Established 1973**

- GLASS CUT TO SIZE
- SLIDING SASH WINDOWS
- SECONDARY GLAZING
- CONSERVATORIES
- BI-FOLDING DOORS
- FRENCH & PATIO DOORS
- PVC, ALUMINIUM & HARDWOOD WINDOWS AND DOORS
- BUILDING & INSTALLATION WORK
- COLOURED SPLASHBACKS
- LEADED LIGHTS
- REPLACEMENT/REPAIR SERVICE

**1st Class Product - 1st Class Workmanship - At An Affordable & Fair Price  
Private & Commercial jobs undertaken**

**Call - 0800 975 7967**

[www.priceglassbristol.co.uk](http://www.priceglassbristol.co.uk)

[office@priceglassbristol.co.uk](mailto:office@priceglassbristol.co.uk)



**Visit our  
showroom at**

**4-6 Ashley Down Road  
Bristol, BS7 9JW**



## Natural BORN FLOORING



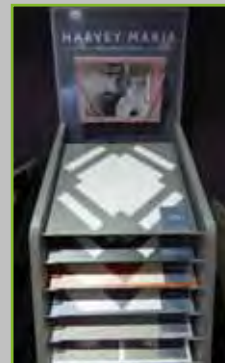
**01179 427829**

**Natural Born Flooring**

203 Gloucester Road  
Bristol, BS7 8NN

Customer parking at the rear of the shop  
[www.naturalbornflooring.co.uk](http://www.naturalbornflooring.co.uk)

MARMOLEUM • KARNDEAN • CARPETS & VINYL  
COIR • WOOD & BAMBOO SISAL • RUBBER & LEATHER  
CUSTOM RUGS & RUNNERS • SEAGRASS



It is great this family business has remained busy during these challenging times. When I last spoke with owners Colin and Ross they told me they have now been on our high street for nine years! They both still very much enjoy being a part of the Gloucester Road community and thank their local customers for their ongoing support.

Their impressive showroom runs over three floors – downstairs is dedicated to real wood, parquet and engineered oak flooring.

The rear showroom displays stylish, luxury vinyl tiles, perfect for all areas of the house with brands such as – Amtico, Karndean, Distinctive, Polyflor and Harvey Maria – who have a fabulous new range on display at the showroom.

The ground floor is home to an extensive range of quality carpets rugs and runners, both of natural and synthetic fibres. Ross has been busy installing the new distressed wooden panels that display beautifully the diverse ranges of gorgeous carpets they have on offer.

Natural Born Flooring's team are highly experienced and offer a friendly service, focusing on exceptional quality installations, using only the highest standard of products at competitive prices.

Although Natural Born Flooring has been able to continue working throughout lockdown (in line with government restrictions), they are delighted that customers are now able to visit them at their showroom once again. You may have noticed the outside of the building has been re-painted with a new sign to follow shortly! Do pop in and view the extensive range of flooring samples available, soon!

**Call today for a free consultation on 01179 427829**

203 Gloucester Road, Bishopston, BS7 8NN

[www.naturalbornflooring.co.uk](http://www.naturalbornflooring.co.uk) • Customer parking to the rear of the shop





## THE AERIAL MAN

TV Aerial and Satellite Specialist

- Poor Reception Problems Solved • Fully Guaranteed
- Digital Aerials • Satellites • Additional TV Points
- Repairs • Sky Work • OAP Discounts • Free Quotes
- TV Sales • Humax Recorders

**0117 967 9028**  
**07818 413 451**

www.theaerialman.co.uk | info@theaerialman.co.uk

Which? Trusted trader

## DHS

Dynamic Heating Services

"for all your plumbing and heating needs"

"Our business has grown through reputation and recommendation, so first-class customer service is one of our top priorities"

 Boiler servicing
  Quick response boiler repairs
  Boiler installation
  Bathroom creation/facelift

- Gas Safe Registered • Accredited Installers
- Up to 10 year warranty on Worcester Boilers
- 0% finance offered • Excellent customer service
- Serving Bristol for over 40 years!

**0117 924 7200 • www.dhs-uk.com**

Which? Trusted trader

WORCESTER

safe REGISTER

## Redland Electrical Services

Additional Lighting / Sockets • New Fuse Board  
• Rewires • Home Security • Inspection & Testing

**No Job Too Small**

ELECSA approved contractor Part P Building  
Regulations approved 18th Edition BS7671



**@redlandelectrical**  
**07955 725 307**

alex@redlandelectricalservices.co.uk  
www.redlandelectricalservices.co.uk

## The Roofing Company

- Tiling & Slating
- Lead Work
- GRP Roofing Systems
- UPVC Fascias & Guttering
- Roof Carpentry

Free no obligation quotations  
Competitive Pricing

**0117 950 2610**

E-mail: info@theroofingcompanybristol.co.uk  
Unit 1, 'Perrotot', Hallen Rd, Bristol, BS10 7RP

NFRC THE NATIONAL FEDERATION OF ROOFING CONTRACTORS LIMITED

TRUST MARK Government Endorsed Standard

## Brickwork

by Denise Howard

**Decorative Brickwork**  
different colours, patterns, features and structures

**Bespoke Designs**  
in both reclaimed and new bricks

**Walls Repointed, Restored and Rebuilt**  
including complete walls, small areas, minor repairs, missing bricks and patios


**Lime or cement based mortars used**

**Locally based in Bishopston/Horfield**

Liabilities Insurance held  
References available

City & Guilds Advanced Construction Award - Brickwork - Distinction

**t: 0117 9249166 or 07710 827467**  
**e: brickworkbydenise@gmail.com**



## BS7 BUILDING & CARPENTRY

- Alcove shelving • Kitchen fitting
- Extensions • Loft conversions • Doors
- Windows • Floors/Decks • Skirting
- Plaster boarding • Architraves

For a free quote contact Scott Bayler:  
**scottbayler@gmail.com**  
**07399 261663**

## Home Improvement & Repairs

\*\*\*\*\* "Keep me by the phone" \*\*\*\*\*

Small repair & maintenance jobs.  
Larger projects also done.

Kitchens - Bathrooms - Plumbing - Electrical - Roofing  
Painting & Decorating, Gardening Services etc.  
Clean, tidy, trustworthy, experienced & reliable.  
Reasonable rates & references available.  
Co-ordinated team of trades people... local, small & friendly!.....Contact us for a free estimate on:

**Mobile: 07966 291323**  
**Email: info@homefixweb.co.uk**  
**HOMEFIX www.homefixweb.co.uk**

## Stephen Carter

Painter & Decorator

**Professional Decorating Services**

Painting & Decorating Association  
Accredited (with PDA guarantee)

For a free competitive quotation:  
**07786 513788 or 0117 907 6997**  
Cranside Avenue, Redland BS6 7RA  
**www.carterdecorating.co.uk**

## LOW COST PLUMBING



- ✓ Taps, Washers
- ✓ Toilets, Cisterns
- ✓ Leaks, Blockages
- ✓ Tanks, Overflows
- ✓ Lead Pipes, Stopcocks...etc...

**OAP DISCOUNTS and NO VAT**

**0117 956 4475**

## INDOOR SELF STORAGE

### HORFIELD AND LOCKLEAZE

**WWW.STASHEDAWAY.CO.UK**

Stashed Away, 91a Romney Avenue, Bristol, BS7 9ST  
01179 516325 7am - 7pm, 7 days a week





# Index of Local Advertisers

## Accountants / Book-keeping

EvansEntwistle 17  
Tax Assist 39

## Aerials

Dan Grace Aerials 7,57  
MD Aerials 61

## Architects

Cryer & Coe Architects 38

## Artists

Laurence Kell Portraits 16

## Bakeries

Hobbs House Bakery 1  
Joe's Bakery 23

## Buddhist Centre

Sakya Buddhist Centre 16

## Building Maintenance/Construction

Bristol Building Company 54  
BS7 Building & Carpentry 54  
Denise Howard Brickwork 54  
Expand Building 53  
Homefix 55  
Pear Tree 60  
Renovate 57  
Rob's Property Maintenance 54

## Carpentry/Bespoke Items

BS7 Building & Carpentry 54

## Carpets/Flooring

Conran Carpets 64  
Lee's Carpets 52  
Natural Born Flooring 59

## Car / Motorcycle Repair

Brookfield Garage 10  
DCL Motors 37  
Windsor Road Garage 8

## Childcare

Little Foxes Forest School 4  
Horfield Welly Pre-school 4

## Computers

I love my PC 23

## Dental Care

Horfield Dental Care 1,24

## Dog Walking

Precious Pet Care 9

## Drainage

MJ Harris Domestic Repairs 53

## Editorial Services

Rebecca Ramsden 51

## Electricians

Leroy Charnick Electrical Services 60  
Matt Pederick 55  
MJ Harris Domestic Repairs 53  
Redland Electrical 60

## Financial Advisors

Douglas & Young Financial advisors 41

## Florists

The Flower Shop 25

## Food / Drink shops

Grape & Grind 22  
Hobbs House Bakery 1  
Joe's Bakery 23

## Framing

Niche 17

## Garden Design/Maintenance

All Gardens 20  
Alpine Landscaping 49  
Catherine Dixon (organic) 34  
Collins Trees 56  
Custom Garden Rooms 3  
Secret Garden 35  
Wild Gardening 53

## Garden Rooms/Structures

Custom Garden Rooms 3  
Little House (Playhouses) 14  
Secret Garden 35

## Glazing & Doors

1st Aztec Ltd 56  
Price Glass 58

## Hair / Beauty

The Green Room 25

## Health, Diet, Fitness & Sport

Horfield Leisure Centre 26,27  
Trainhubs 27

## Heating - Gas / Elec

Dynamic Heating Services (DHS) 56  
MJ Harris Domestic Repairs 53

## Home Interior Shops / Services

DHS - Bathroom Installation 56

## Interior accessories

Chunky Rugs 15

## Jewellers

Kemps 25

## Kitchen Installation / Refurbishment

Dream Doors 13

## Martial Arts

Red Dragons Martial Arts 4

## Mobility Solutions

Brookfield Mobility Solutions 10

## Music - Tuition / Performances

Drum & Paice - Drums 9  
Graham Sothcott - Guitar/Ukulele 16  
Scott Hammond - Drums 16

## Optometrists

Lunar Optical 30

## Painting & Decorating Services

Advanced Decorators 56  
AMA & Jill Decorating 56  
Stephen Carter Decorating 61  
Two Tone Decorating & Building 61

## Pets - Care/Shops

Animal Health Centre (Vets) 36  
Precious Pet Care 9  
Roxford's Pet Shop 37

## Pilates

Embracing Pilates 27  
Soul Pilates 29

## Plasterer

A&P Plastering 55  
McCall Plastering 61

## Play Structures/Climbing frames

Little House 14

## Plumber

JPK Plumbing 54  
Low Cost Plumbing 60  
Matt Pederick 55  
MJ Harris Domestic Repairs 53

## Printing Services

Niche 17

## Property Services

Homefix 55  
Rob's Property Maintenance 54

## Recruitment

Affinity Trust 63

## Roofing

Rooftech 57  
The Roofing Company 60

## Roller Shutter Doors (Garage)

Garolla 55

## Rugs - Chunky Rugs

15

## Schooling/Tuition/Courses

Bristol Grammar School 11  
Bristol Steiner School 4  
Liz Romero - local & online tutor 19  
St Bonaventure's School 18,19

## Solicitors

Barcan+Kirby 2

## Self Storage

Stashed Away 39,57

## Tree Surgery

Collins Trees 56  
Nuthatch - Tree management & consultancy 47

## Vet

Animal Health Centre 36



# affinitytrust

Supporting people with learning disabilities

# we're hiring!

We are recruiting full and part time support workers to our new locations in Bristol (BS7 and BS10) supporting young adults with learning disabilities and autism to live independently

No experience required.

£9.50 an hour & great benefits

## Interested?

[affinitytrust.org/jobs](http://affinitytrust.org/jobs)

Call Lucy 07584528380

Email [lucywhite@affinitytrust.org](mailto:lucywhite@affinitytrust.org)



Although being a driver is not essential you must be able to get to the location for shift start times. (DT10 1FW)

**EDITOR'S NOTE:** Please note that we try to be as unbiased as possible in the editing of this magazine. We cannot take responsibility for anything stated by an advertiser and cannot be held responsible for misrepresentation in the adverts included. Views and opinions expressed are not necessarily those of the editor (unless it is a personal review of a service that we have participated in). We cannot vouch for every advertiser personally (although since starting this magazine we have used many of the services). Any feedback or experience is welcomed. **The Small Print!** Bishopston Matters will be distributed during the first week of every month (as far as possible) to 3,500 homes per month on a three month rotational basis (10,500 homes per quarter) covering the areas of Bishopston, Ashley Down, Horfield & St Andrews. We cannot be held responsible for any inaccuracies in advertisements nor for any consequences arising from this. We are not to be held responsible for damage or loss of copy or error in printing. It is the advertiser's responsibility to ensure conformity with the Trade Descriptions Act 1975, Business Advertisements Disclosure Order 1977, Sex Discriminations Act 1975 and the Consumer Credit Act 1974. All artwork used in Bishopston Matters must not be published in any other media without our permission.

Bishopston Matters is run independently but under licence from the Matters Magazine franchise.

For further information on Matters Magazines see [www.mattersmagazines.co.uk](http://www.mattersmagazines.co.uk)

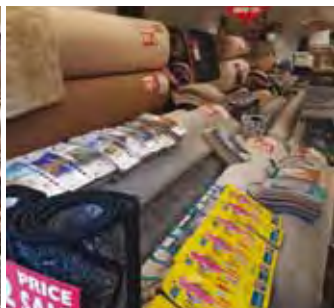
© Bishopston Matters 2021

Don't forget to mention Bishopston Matters when replying to ads!



# Conran Carpets

*...your next step in floor covering*



▪ Carpets ▪ Rugs ▪ LVT ▪ Linoleum ▪ Vinyl ▪ Laminate ▪ Safety Flooring ▪ Coir ▪ Sisal

Bringing twenty-five years of floor covering experience to Gloucester Road, your reliable, independent, local, first-class carpet shop.

We always have full rolls in stock and on display ready for your perusal, roll stock always represents best value. Come in to buy or just to say hi, either way we would love to meet you.

- Fully certified and insured in-house fitters
- Full 'no pressure' measuring service.
- Directly dealing with all the major manufacturers

**Let us be your next step in floor covering.**

***Celebrating 3 years on Gloucester Road!***  
***Thank you for your custom***

## WHAT OUR CUSTOMERS SAY...

*"Very Friendly and Helpful"* "What a find! Completely took the stress out of all my carpeting needs. Selection is huge, staff very friendly and helpful and a local shop!! Highly recommend."



278-280 Gloucester Road,  
Horfield, Bristol, BS7 8PD  
(opposite the Post Office)

Call us on **0117 9425 770**  
**conrancarpetsltd@gmail.com**  
**www.conrancarpetsltd.com**  
Open Mon-Sat, 10am-6pm

