



# Bishopston

including Ashley Down, Horfield & St. Andrews

## Matters

issue 106, April 2017



*A season filled with  
hope and happiness*



The heart of yoga in Bristol

yogawest

### Termtime Courses

for children, teenagers,  
pregnancy, postnatal, baby  
massage, early morning and  
gentle classes: booking now!

See website for full details  
or call 0117 924 3330

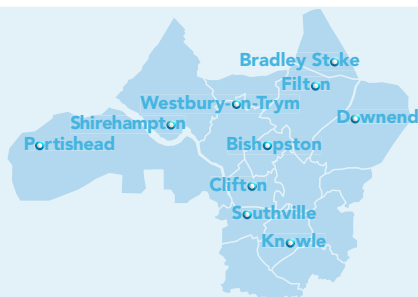
[www.yogawest.co.uk](http://www.yogawest.co.uk)

Denmark Place, Bishopston, Bristol BS7 8NW

# Bristol

ocean

We're truly local & proudly independent...  
[oceanhome.co.uk](http://oceanhome.co.uk)



Find Bishopston Matters on Facebook



Follow @bishmatters on Twitter



## Stop dreaming, start building

We have the expertise to turn your dreams into your dream home



Bespoke Building Contractors Ltd  
16 Kellaway Avenue  
Westbury Park, Bristol BS6 7XR

0117 924 8335  
bespoke-builders.co.uk



## Dear Readers...

Welcome to the April issue of your community magazine, it feels like Spring has finally Sprung as I write this - with heart-warming flowers adorning Ashley Down Green, Horfield Common and of course our glorious St Andrews Park; read news from all of these green spaces in the magazine.

Easter will be celebrated on Sunday 16 April; we are pleased to include details of seasonal church services on the community noticeboard. We hope the fabulous pictures from Year 2 classes at Ashley Down school will get you in the mood for a good egg hunt, starting at the Ardagh Bowling Club on Horfield Common on Saturday 8 April, 10-12.30, great family fun for all. As well as a fab, free bunny trail with the GRBID.

Local photography studio Zzzzone are running an Easter Competition for little ones and there are many options for Easter

gifts, thinking beyond chocolate, throughout the magazine - our local traders always appreciate our support.

Plans are well underway for another exciting Mayfest on Glos Rd Central, you can read all about this and news from the local traders.

Friend of St Andrews Park, Simon Davis, is fulfilling a challenge set by his 13-year-old daughter Tatiana to raise funds to buy Lego sets for children in hospital. Tatiana loves Lego and found this activity helped whilst she was in hospital receiving treatment - so please give generously.

As we enter another holiday filled with indulgence, perhaps we could all put a little something extra in our baskets to donate to the North Bristol Foodbank via one of the Gloucester Road collection points.

Love to you all,

**Kerry X**

Email: [kerry@bishopstommatters.co.uk](mailto:kerry@bishopstommatters.co.uk) • [www.bishopstommatters.co.uk](http://www.bishopstommatters.co.uk) Bishopston Matters  
Bishopston Matters, PO Box 337, Bristol, BS9 4WT Tel: 07881 924 059 / 0117 349 4483 @bishmatters

## Xpress Computers

REPAIRS • UPGRADES • SALES

At Xpress Computers, we talk plain english to our customers, not technical jibberish.

### Computer problems?

- Computer Viruses
- Malware Removals
- Upgrades / Set Up
- Computer Networking
- Wireless Networking
- Data Recovery / Back Up / Transfer
- Hardware / Software Installation
- General Sales
- Internet Security
- Games Console Repairs
- Broken Screen Repairs
- PC & Mac Specialists



**PC Health Check**  
Is your computer running slow?  
We can help!



**10% OFF WITH THIS ADVERT**

Telephone: 0117 908 0290  
176 Gloucester Road, BS7 8NU

facebook.com/xpresscomputers176  
 @XpressComputer1



CLIFTON COLLEGE  
SERVICES LIMITED

# Birthday Parties

at the Outdoor Activity Centre

Abbots Leigh Sports Ground

Bushcraft/Forest School

Archery

Mountain Biking

Plus much more!



For more details please contact

Telephone: 0117 923 7780

Email: [activitycentre@cliftoncollege.com](mailto:activitycentre@cliftoncollege.com)

[www.ccscl-cliftoncollege.com](http://www.ccscl-cliftoncollege.com)



Celebrating World Book Day with Brunel Field



World Book Day is always a huge amount of fun and a great way to encourage young readers. I was invited to join in the day's activities with Brunel Field.

The school was celebrating 'Book Fest' with a whole week centred around the importance and delight of reading a book both at school and at home. I think you will agree on viewing these images, there was a great deal of enthusiasm at the school. I particularly liked the Roald Dahl characters – there were some fantastic BFG ears and the concoction for George's Marvellous Medicine looked like it could be the real thing! There was also some amazing dressing up by the teachers, the combined 101 Dalmatians and Mr and Mrs Twit were a triumph!

After school the children were invited back for bedtime stories in their PJs along with most welcome milk and biscuits. The older children had a great time sitting around a campfire outside sharing stories.

Whilst visiting the different classes I noticed some beautiful displays with the theme of the Ted Hughes poem 'The Stag'. Miss Logan told me what fantastic Art Days the school had enjoyed on this topic. Working with Travelling Light, the pupils had taken part in drama, music and dance, culminating in a wonderful performance. I hope you enjoy the photos below capturing the pupils' enchantment and engagement during the workshops.



Bottom images taken during the Art Days celebrating the poem 'The Stag' thanks to Camilla Adams.



Summer may seem a long way off yet but we're already busy planning our next social for June. This will be our second big gathering for children with Special Educational Needs and Disabilities (SEND),

their families and friends. For our first, in November last year, we wanted to provide a space for local kids with SEND to socialise in their own community, something which they don't often get the chance to do. For our next social in June we want to provide that social space again but also take another step towards our goal of making BS7 an inclusive community.

We're inviting people who run activities and groups in Bishopston to come along on 11 June and find out how they can be more accessible for children and teenagers with SEND. We're already partnering up with local providers, such as the Golden Hill Community Garden and King's Lawn Tennis Club, to work towards inclusive provision. The upcoming adventure days and monthly club at Golden Hill and the holiday sessions at King's Club are not designed to be exclusively for kids with SEND. Our aim is to make these activities inclusive for the whole family.

With this mind, we'd welcome any club or group running in BS7 to come and meet us and start thinking about how to achieve this aim together. At our last social, the amazing Adventure Team gave up their Sunday afternoon to entertain us. Amy from cookery workshop company Baby Bites helped us to decorate cakes. We'd love other local companies and groups to get involved and give taster sessions. And, most importantly, work out if they can find ways to make their activities – whether it's a French language group or a ballet school – available to every child in their community.

We hope that eventually local providers will use our logo to show that they are approachable, open

## CATHERINE DIXON

Committed to gardening organically  
Based in Bishopston

- Garden Maintenance
- Planting Plans
- Design

Est 1997 • Tel: 0117 9095460

Visit: [catherinedixongardens.co.uk](http://catherinedixongardens.co.uk)

Email: [info@catherinedixongardens.co.uk](mailto:info@catherinedixongardens.co.uk)



and keen to be as inclusive as possible for those children with additional needs.

**SENDaWelcome will be having a regular monthly meet-up at Boston Tea Party on the last Friday of every month between 3.30pm and 6pm.**

**And in partnership with Golden Hill Community Garden a monthly Sunday Club is launching this April, see page 38 for full details.**

**Our social is on Sunday 11 June 2017 from 2pm to 4pm at St Michael's Church, 160a Gloucester Road.**

**Follow on Twitter @sendawelcome and on Facebook /SENDaWelcome/ for updates. If you would like to contact us, email [sendawelcome@gmail.com](mailto:sendawelcome@gmail.com).**



## Windsor Road Garage

Family business est 1964

- Car Servicing • MOT Testing
- Vehicle Repairs
- Classic Car Maintenance

Get in touch with this trusted, friendly garage,  
to book in call 0117 924 7113.

Open Mon – Fri: 8.30 to 17.30, Sat 9.00 to 12.00.

Windsor Road Garage, Windsor Rd,  
St Andrews, Bristol, BS6 5BP

[www.windsorroad.co.uk](http://www.windsorroad.co.uk)  
[www.windsorroadgarage.com](http://www.windsorroadgarage.com)



## Getting Creative for MS

**Four local artists are coming together to host an Arts Fair on Saturday 15 April, 10am to 4pm at St Michael's Church Hall (160A) Pig Sty Hill on Gloucester Road, to raise funds for the MS Society.**

The event organisers work under the name of Artful Dodgers, which comprises four main artists – Pete Simpson of Impsandthings, making fantasy and steampunk figures; Lloyd Lewis water colour portrait artist (who will be painting from a model on the day); Matthew Hayden Jeanes, illustrator and art educator; and Nige Burr, a landscape and wedding photographer. Nige has recently been diagnosed with MS (Multiple Sclerosis), so the artists are pleased to donate some of the proceeds raised at the Art Fair to the MS Society.

The Artful Dodgers are all teachers or staff at Patchway Community College, who wanted the opportunity to share their work and meet other talented artists. There will be 10–15 artists attending the fair, including photographers, doll makers, a maker of ray guns, jewellery makers and others.

The MS Society will be there to support the day, along with a host of exhibitors and entertainers. Living with MS isn't always easy – whether you're coping with a diagnosis or have lived with it for some time. Scientists are carrying out more MS research than ever before. Around 100,000 people in the UK have MS. Diagnosis is usually between the ages of 20 and 40. As many of you will know, MS is a charity close to my heart, so please do support this great event and worthy charity.

**Visit the Artful Dodgers Facebook page: [www.facebook.com/artfuldodgersexhibition](http://www.facebook.com/artfuldodgersexhibition)**



Nige Burr photography



Matt Jeanes self portrait



Lloyd Lewis self portrait



Fantasy figure by Pete Simpson



Bristol  
Grammar  
School

## Starting life's adventure

Come and discover for yourself what makes BGS such an exciting and enjoyable place to learn, make friends and begin life's adventure.

## Open Morning

Friday 12 May  
10.00am–12.00 noon

For further information, please contact  
Hollie Matthews on 0117 933 9885 or  
at [admissions@bgs.bristol.sch.uk](mailto:admissions@bgs.bristol.sch.uk)



## News from Sefton Park Primary

Pupils at Sefton Park enjoyed a wonderful day of celebrations for World Book Day on Thursday 2 March. As well as fancy dress, the new library was opened, a whole school book swap took place, and year 6s led pupil parliament activities. A great day was had, and further opportunities to celebrate the rich and varied world of books will take place throughout the academic year.



Sefton Park children also recently participated in a Safer Internet Day. Assemblies were held for Infant and Junior children, followed by a learning activity during the day, which was then discussed in pupil parliament. The main focus of our Safer Internet Day this year was around the posting of images and searching for images online.



In particular, the main messages for Key Stage 1 children were around not sharing personal details online and telling adults if they are unsure about clicking on a link.

The year 6s performed a short play for Key Stage 2 children on using the internet for positive contributions, with an emphasis on what sort of online profile we would like to have and how we go about achieving that.



### 106th Bristol Brownies celebrate their Young Leaders

106th Bristol Brownies meet at St Bonaventure's Parish Hall. They are lucky enough to have two Young Leaders helping them on a weekly basis.

Alex, pictured above with the Brownies, has recently completed her Young Leader Qualification. This has included being involved in the planning of meetings, assessing leadership styles, running a Brownie 'pow-wow' and organising and carrying out activities, from crafts, games and trips out, to teaching the Brownies about the Brownie Promise. The qualification can also be used to work towards adult leadership at the age of 18, to become an Assista

nt or a Unit Leader.

Alex originally volunteered as part of her Duke of Edinburgh's Award and has decided to stay on as a Young Leader. She is currently using her Young Leader Qualification on her CV and to help with her Sixth Form applications, drawing on her experiences as a Young Leader and her learnings through the completion of the qualification. She was presented with her certificate and badge at a recent North-West Bristol leaders gathering – congratulations Alex!

If you or anyone you know would be keen to contribute as little as one hour a week as a Young Leader, Unit Helper or even an Assistant or Unit Leader, please contact the local brownie group at – [106thbrownies@gmail.com](mailto:106thbrownies@gmail.com).



Simon Davis



Tatiana Davis

### Beard TO-GO to raise funds for LEGO at Bristol Children's Hospital

This month, St Andrews resident Simon Davis got in touch with the below request. Please do dig deep and support this local family with their fundraising efforts.

*My fantastically brave 13-year-old daughter Tatiana has been in remission for 1.5 years, but has just been diagnosed with leukaemia.*

*Tatiana loves Lego. Whilst in hospital she has been able to play with Lego sets donated to the play team by the wonderful Fairy Bricks charity.*

*Tatiana is a wonderfully generous daughter and has suggested that other children would enjoy playing with Lego whilst in hospital just as she does. Lego is both stimulating and distracting – just what children need in hospital.*

*Tatiana has challenged me to raise some money for Fairy Bricks by having my beard shaved. The least I can do is to oblige her wish. Tatiana had a goal of £500 but she has already shot past that amount after only a few days. Colston's Girls' School are busy fundraising for the charity too.*

*I know the people of Bishopston and St Andrews are generous, so thank you in advance for supporting our efforts via –*

**<https://mydonate.bt.com/fundraisers/simondavis1>**

## KATE KIRKBY PHOTOGRAPHY

Official Launch Night  
Wednesday 26th April



*You are invited to the launch of Kate's new studio in Ashley Down. Join her for a glass of bubbles & entry into a prize draw to win a family photoshoot and other fantastic prizes.  
Wednesday 26th April, 7-9pm, 2 Ashley Down Road. RSVP to [katekirkby@gmail.com](mailto:katekirkby@gmail.com)*

### Cotham School Production takes its audiences by storm!

After weeks of preparation, the bleak and stripped back interpretation of Macbeth finally met its audience. Almost 500 people came to watch the Macbeths' descent into madness and the hard work of the cast and crew was rewarded by a series of wonderful performances. To pick out individuals would be a dis-service to the outstanding cast, who – whether they had one line or hundreds of lines – were committed, driven and a credit to the school.

One parent commented "I thought the production of Macbeth was outstanding! The energy, innovation and quality of production was truly exceptional and kept us completely engaged throughout. It could certainly rival, if not beat, those Shakespeare plays I have seen at the National, Barbican and Donmar Warehouse in London!"

Thank you to all staff and students who gave up their time and enthusiasm to help out. The Year 10 connexions performance is just around the corner and then – in term 6 – are our lower school shows: three plays in search of an audience, keep an eye out for details.



# LUNAR OPTICAL



## SPRING OFFER UP TO 50%\* OFF ALL Nikon Occupational Lenses

*\*conditions apply*



291 Gloucester Road, Bishopston, BS7 8NY • Tel: 0117 942 0011  
info@lunaroptical.com www.lunaroptical.com

Open: Mon, Fri & Sat - 9.30am to 5.30pm / Tues, Wed & Thurs - 9.30am to 6pm



Spring has Sprung on Glos Rd Central  
Get ready for Mayfest 2017!

**Spring is here and Glos Rd Central is blooming in all sorts of ways.** Our planters have been full of daffodils throughout March and other plants are bursting into life. The planters were created last year by the Avon Wildlife Trust in order to create a 'green corridor' along our high street and keep both our customers and the bees happy. Traders are now responsible for the containers outside their shops. Local gardener Lucy Clements has offered to help traders get their pavement planters into shape for the summer. Lucy has a local gardening business and is also an active volunteer at Golden Hill Community Garden. As well as plants flourishing, our shops are growing as well. New additions this month include an interior designer, a barber's, a vinyl shop, a dessert & ice cream palace and a new gift shop.

The Golden Lion pub and Room 212 are organising our annual **Glos Rd Central Mayfest**, which will be held on **Saturday 6 May 2017**. As usual the day will be a celebration of our community,

culminating in the arrival of traditional Jack in the Green and his procession of dancers and musicians.

Bishop Road will be closed to traffic to make the event safe for Jack in the Green to stop and dance and for stalls and activities to take place. There will be live music from local choirs including Bishop Road Community Choir and up-beat bands Paruski and Slimline Shufflers. The Bishopston Garden Society will be selling plants in aid of Bristol's refugees and there'll be other gardening opportunities from Lucy Clements and the Golden Hill Community Allotments. Billy Jean clothes will return with their Cashmere Event and other local makers will have stalls.

*Continued on following page ►*



*Kate Tarling*

Makes personalised stitched family portraits and maps.

Find her at fig,  
206 Gloucester Road

katytarling@googlemail.com



## Billie-Jean Pop Up Cashmere Event

Glos Rd Central **Mayfest** Saturday 6 May  
on forecourt of



194 Gloucester Road, Bishopston



## DESIGNERS BARBER SHOP

Tel 0117 942 9322

### Opening Times

Mon 9 - 4, Tues 9 - 5, Weds 9 - 5  
Thurs 9 - 7, Fri 9 - 6, Sat 8 - 3

311 GLOUCESTER RD, BS7 8PE

FREE WiFi available



Continued from previous page ►

Bristol Jam Plan is a community project which turns donated surplus produce and fruit & vegetable gluts – that might otherwise be wasted – into delicious preserves. Every month they donate funds raised from preserves sales to a different local charity, so the sales at Mayfest will go to Golden Hill Community Garden. They will have a stall outside Joe's Bakery and have also offered jam for the scones at the temporary café at the 212 Eco House on Bishop Lane. If you haven't had the opportunity to look round the lovely Eco House, then Mayfest is your chance. The house, built entirely from sustainable and recycled materials, is rented out as a guest house but will be open to visitors on the day with lovely homemade tea and cakes on sale in the garden.

Glos Rd Central traders will be participating in Mayfest by setting up stalls and activities outside the shops. There'll be lots of food, drink and creativity for everyone all day long. It's a wonderful day to be out and about on Gloucester Road, meeting your friends and neighbours and celebrating the arrival of summer.

If you'd like to have a stall or perform at the Glos Rd Central Mayfest then get in touch with Sarah at Room 212 newtwist@mail.com



**Award Winning!** We've also been winning awards and prizes. Sarah Thorp, owner of Room 212 and organiser of Glos Rd Central, was recently nominated as a Local Legend by national Independent Retailers organisation Revive & Thrive. She submitted an application on behalf of Glos Rd Central and won top prizes at the recent national Revive & Thrive convention. One of the prizes is a giant interactive Advent Calendar from City Dressing, which will tie in well with the Gloucester Road Art Banners. Nuala Morey Hair & Beauty and Room 212 are both finalists in the Bristol Life Awards – as are The Grace and Bakers & Co further down Gloucester Road – the winners will be announced on 27 April so fingers crossed for everyone.

Continued on following page ►

## Expansion at Joe's Express

With the news that Mad About Sarnies has decided to close, Joe's are keen to carry on their great work in providing bespoke, quality sandwiches to local customers. Express has always sold tasty pre-made sandwiches (that are often enjoyed as part of their meal deal), along with pasties, croque Monsieur, pizza and classic bacon rolls but now they are offering even more! You can now delight in made-from-scratch wraps, panini, sandwiches or have a salad box made up if you are looking for something lighter. Joe's hope you will enjoy the greater range of delicious products available.



**Stock up on Easter Goodies!** It would not be Easter without Joe's famous Easter biscuits, made with oil of cassia, along with their special Easter bread. Place your orders now, for fresh, white or wholemeal hot cross buns, they are delicious.

Joe's Bakery, 240-242 Gloucester Rd, BS7 8NZ  
Tel: 0117 975 5551 • [www.joesbakery.co.uk](http://www.joesbakery.co.uk)

## The Bike Man – your local bicycle shop



The Bike Man is a friendly bicycle shop. We are professionally qualified (Cytech 3) mechanical experts with years of experience and welcome anything from small repairs to bigger and more intricate work, services and builds.

In our shop you will find a full range of tools and accessories, beginner bikes for little people and locally made, well-furnished Bristol bikes. Come in and check us out!



**The Bike Man**  
276 Gloucester Road, BS7 8PB  
Facebook/thebikemanbristol  
@matthebikeman  
07930 998189 / 0117 329 7189  
[matt@thebikemanbristol.com](mailto:matt@thebikemanbristol.com)



**Artemis**  
designer jewellery and gifts

Home of  
**Catherine Amesbury**  
contemporary jewellery design

Shop in store for our ready-made collections  
Bespoke commission service available

214 Gloucester Road, Bishopston, Bristol, BS7 8NU  
Tel: 0117 924 1003 [www.artemisbristol.co.uk](http://www.artemisbristol.co.uk)

## Pearce's Hardware Store

Trading for 125 years!  
Pearce's Hardware  
is a traditional store  
with traditional values,  
we sell just about  
everything you can  
imagine you might  
need for your home  
and garden.



We are proud of our heritage and our contribution made to the Gloucester Rd over many years.

We sell... tea pots, draught excluders, big chains, little chains, strong chains, weak chains, watering cans, mouse traps, glues, plugs, shower heads, thermos flasks, duct tape, plant food, umbrellas and staple guns. We are happy to provide goods by special order if we do not have it in stock and provide advice on your home improvement projects.

**If you want it, the chances are we will have it!**

**295 Gloucester Road, BS7 8PE**  
**Tel: 0117 924 5787**



Continued from previous page ►

**Gloucester Road Art Banners** Local artists have been busy creating some amazing artwork to reflect the brilliant things about the Gloucester Road area. The artwork will be displayed on giant art banners up on lampposts along the high street. Some fantastic ideas have been put forward and we're asking for your help to decide the best ones. Here are just a few examples to whet your appetite. The aim is to brighten up our high street and encourage visitors to stop, have a browse and support our local traders. The banners will also be a celebration of our wonderful community and everyone who lives and works here. Please look at the Glos Rd Central website and follow the link to the Gloucester Road Art Banners facebook page. You can then 'like' your favourite ones and add your comments. Then watch out for news of when the banners will go up [www.glosrdcentral.co.uk](http://www.glosrdcentral.co.uk)

**Bristol Pound are creating a free map of Gloucester Road** to include all local businesses accepting the B£. This is the first in a series of maps to be created for Bristol. The Bristol Pound is real money designed to support independent businesses in and around Bristol. The map will be designed using artwork submitted for the Gloucester Road Art Banners and will be launched at the Glos Rd Central Mayfest.

**Xpress Computers Reader Comp** – To celebrate the launch of their new website – [www.xpress-computers.co.uk](http://www.xpress-computers.co.uk), Xpress Computers are offering **20% off Data recovery to one lucky reader**, to enter, simply e-mail the Gloucester Road business via their website, asking to be entered into the free draw.

**Follow our glosrdcentral facebook page or twitter to be kept up to date on all our news, as well as – [www.glosrdcentral.co.uk](http://www.glosrdcentral.co.uk)**

## Need an Accountant?

**TaxAssist Accountants**  
The Accountancy and Tax Service for Small Business

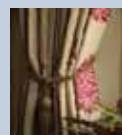
Our services include Accounts for Sole Traders, Partnerships, Limited Companies, Tax Returns, VAT, Payroll, Business Start-ups and Company Formations

# 0117 370 0016

FREE initial consultation  
[iansmith@taxassist.co.uk](mailto:iansmith@taxassist.co.uk)

Fixed fees agreed in advance

Visit us at [www.taxassist.co.uk/horfield](http://www.taxassist.co.uk/horfield)  
or at **288a Gloucester Road, Bristol, BS7 8PD**



### MARIALINA

Fabrics and Soft Furnishings

- ★ Quality made to measure soft furnishings - curtains, blinds, loose covers, cushions and more
- ★ We have a fantastic range of fabrics, wallpapers, poles, tracks, accessories and gifts
- ★ Free measuring service and advice and styles

**Come to the shop and be inspired this Spring**

**210 Gloucester Road, Bishopston, BS7 8NU**

**Tel: 0117 329 0899**

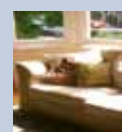
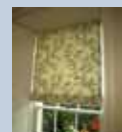
**Mob: 0772 999 7359**

**Email: [info@marialina.co.uk](mailto:info@marialina.co.uk)**

**Web: [www.marialina.co.uk](http://www.marialina.co.uk)**

**Open: Tues to Sat 10am – 5pm.**

Ring for appointments outside these times.



## Passion and Pride Rewarded at the Bishopston Fish Bar



Bishopston Fish bar owner, Nick Lomvardos was over joyed when I met with him recently, after hearing the news his Fish shop had been recognised with the prestigious National Federation of Fish Friers (NFFF) Fish & Chip Quality Award, for the fourth consecutive time.

The award identifies fish and chip outlets that serve the highest quality food following a thorough assessment of the premises, equipment, working practices, hygiene standards and management controls, along with the quality and taste of cooked fish and chips.

As well as the Quality award, the Fish bar has been area winner for the South West of England (Avon, Wiltshire and Devon) for the past four years and in the Top 50 Best Fish and Chip shops 2014-2016 (currently waiting to be assessed for 2017).

### Raising funds for Alzheimer's

The other major passion in Nick's life are his two sons, Andrea (14) and Andoni (11). He could not be a prouder father. After swimming 200 lengths last year for Marie Curie, this year the boys are tackling 500 lengths to raise funds for Alzheimer's, an illness Nick's father sadly suffers with.



Nick's father sadly suffers with.

**Please help them reach their £1,000 target by donating at the Fish Bar or online – [www.justgiving.com/AndreaAndoni500swim](http://www.justgiving.com/AndreaAndoni500swim)**

Nick puts all the success down to his hard-working team – Anna, Bernadetta, Chris, Marta and Seyed, along with his continued investment into quality products.

*"I couldn't do it without my fantastic team, I would like to thank them all for their continued good work. The food is so well received due to the care we take preparing and cooking with the best vegetable oil, Maris Piper spuds and sustainably sourced cod and haddock."*

### Reader Offer – FREE CHIPS!

To celebrate there recent award, Nick would like to give something back to their loyal customers and offer an incentive to anybody who has not yet sampled the delights of the Bishopston Fish Bar. Simply cut out the coupon below and receive a FREE portion of chips with any piece of fish bought.

**264 Gloucester Road, BS7 8PB**

**Tel: 01173 079 390**

**[www.bishopstonfishbar.co.uk](http://www.bishopstonfishbar.co.uk)**

**Reader Offer**

## FREE CHIPS!\*

**This voucher entitles you to one FREE portion of chips with any piece of fish purchased at Bishopston Fish Bar.**

**Simply cut out this voucher and present it at payment.**

\*Offer entitles one per person, per purchase.  
Valid until 31/05/17

**U3A Art Groups** – Are you interested in art? The Bristol U3A has several groups specialising in art. They may not be in the middle of Bishopston, but most are not too far away, and there is easy free parking at some.

So, if you have given up full time work, and are looking for new friends and interests, then you could do a lot worse than joining the Bristol U3A.

Every Friday there is an illustrated talk at St Mary's Church Rooms, Mariners Drive, Stoke Bishop. The talks start at 10.30, but members gather at 10am for coffee, biscuits and a chat. The Art Appreciation Group has talks coming up on Walter Spies and Art in the Life of Bali, by Keith Ripley, and Moveable Feasts – Food art and the al Fresco by Judy Preston.

The art history group is covering the period from Renaissance to Baroque and comparing work by many artists including Rubens, Velasquez and Rembrandt.

If that's not to your taste, then there is a monthly Thursday group, who visit various galleries and then discuss what they have seen over coffee. Or if you want, you could even join a group which improved your own artistic skills!

Full details of these and all the other groups within the Bristol U3A are on the website [www.bristolu3a.org.uk](http://www.bristolu3a.org.uk). Membership costs £15 per year and most groups are free to attend. So, do visit the website and get in touch, you are guaranteed a warm welcome.



# Alpine

## LANDSCAPING

Established Family Firm with 25 years experience

- ❖ Senior Citizens Special Rates
- ❖ Garden Clearance - Regular or One Off
- ❖ Patios ❖ Fencing ❖ Tree Work ❖ Turfing
- ❖ Hedgecutting Planting (Shrubs etc)
- ❖ Organic Manure Delivered - Also applied
- ❖ Professional and Guaranteed Work
- ❖ Brick & Blocklaying

Call Joe for a Free Quote  
**0117 959 2143**  
**07891 253 122**

**25% Off**  
with this advert!

[www.alpine-landscaping.co.uk](http://www.alpine-landscaping.co.uk)  
 79 Falcondale Road, Westbury-on-Trym



## Bristol Central Tennis Club

### Spring courses

Why not try...

**Adult Improver Courses**  
 start 27th April  
 Evening and new DAYTIME slots

**Tots Tennis and Cardio**  
 Tuesdays 9.15 - 10.15

**Juniors' after school coaching, and holiday camps**

Improvers: contact Chris  
 (christotowner@btinternet.com)

For tots, juniors & other coaching, call Kerris  
 (07917 855357)

[www.bctc.org.uk](http://www.bctc.org.uk)



## Ceilidhs & Shakespeare with FoSAP

For many people, 'ceilidhs' – or barn dances for the non-celts among us – are a Marmite issue. You either love them or you find them profoundly unappealing.

Fortunately for The Friends of St Andrews Park (FoSAP) there is a hard core of 'ceilidh' enthusiasts who come back every year for our annual community event held in St Bart's Church Hall, and this year was no exception.

Around 80 regulars, with a few newcomers, gathered on a balmy spring evening to show off their fancy footwork – and for those of us lacking those skills, me included, there was thankfully no embarrassment which is, after all, one of the advantages of ceilidhs. There is no shame in making mistakes and anyway, they are unlikely to register with fellow dancers as the music and the motion moves on relentlessly. But confusion, chaos and laughter are part of the fun!

Fortunately for us, our regular caller Vicky was on hand to keep a semblance of control with the wonderful Molecatchers playing with their usual high-energy, occasionally blending traditional ceilidh tunes with brief excursion into Middle Eastern strains. Vicky even complimented us on the quality of our dancing – a rare and welcome accolade.

Fundraising is also an important part of these happy evenings and, thanks to the generosity of our friends and fellow dancers, we raised over £600 – most of which will be donated to the Red Cross Syria appeal. The balance will be used to help fund some of our work to maintain and develop the amenities in this beautiful park. Cuts in council funding for parks and open spaces inevitably means that fundraising is an increasingly important aspect of our work. For their generosity, we offer a huge thanks to all who attended as well as to the many local traders, and others, who provided raffle prizes.

## Shakespeare on your doorstep

We are fortunate to have regular opportunities to enjoy the works of Shakespeare in our wonderful city. The Tobacco Factory is presenting 'Othello' this spring and The Bristol Old Vic often presents the works of The Bard. And for addicts, Stratford-upon-Avon is only 1½ hours' drive away.



So, what could be better than

having one of his classic plays on your doorstep?

On Sunday 25 June, the very day after mid-summer day, The Friends of St Andrews Park are promoting a performance of the very special 'A Midsummer Night's Dream'. Performed by 'The Pantoalons', a touring theatre company renowned for their riotous and family-friendly interpretations of the classics, this will certainly be a highlight of the summer. Members on the cast will perform under the trees between the playground and the Effingham Road gate where many enjoyable outdoor community events have been presented by The Friends, including the now legendary 'Music in the Park' and more recently the anarchic 'Theatre in the Park'.

This performance of 'A Midsummer Night's Dream' is destined to be a memorable event – definitely a 'not-to-be-missed' experience! Ticket sales will commence in early May, meanwhile visit [thepantoalons.co.uk](http://thepantoalons.co.uk) for more information and rave reviews.

## Performance details at the time of writing are:

Date: Sunday 25 June 2017, Time: Entrance from 18.00, performance starts at 19.00 and ends around 21.00. Location: St Andrews Park, under the big trees between the playground and the Effingham Road entrance. Ticket prices: Adult £12.00, unwaged £10.00, 18s and under £6.00. Booking: currently through The Pantoalons website. Essential: bring a picnic and something to sit on. If wet: in St. Bart's Church Hall.

We hope to see you on 25 June for what will be the perfect summer evening.

If you would like to get involved in our enjoyable work please contact me, the Secretary, at [paulbullivant@gmail.com](mailto:paulbullivant@gmail.com) and check for notice of our meetings and events at –

[www.friendsofstandrewspark.ning.com](http://www.friendsofstandrewspark.ning.com)

ACCLAIM FOR THE PANTALOONS:  
 "BRILLIANT" THE TELEGRAPH "GLORIOUS" THE STAGE "INIMITABLE" THE GUARDIAN

THE PANTALOONS PRESENT [thepantoalons.co.uk](http://thepantoalons.co.uk)

# A MIDSUMMER NIGHT'S DREAM

OPEN-AIR SHAKESPEARE

St Andrews Park, BRISTOL, BS6 5AX  
 Sunday 25 June at 7pm (doors open at 6pm)  
 Box Office: [thepantoalons.co.uk](http://thepantoalons.co.uk)

Proudly promoted by  
 The Friends of  
 St. Andrews Park  
[www.friendsofstandrewspark.ning.com](http://www.friendsofstandrewspark.ning.com)



# everyone ACTIVE



## BE ACTIVE AND FEEL BETTER FOR IT

Bring this advertisement to the centre and claim a **FREE activity day** to try the facilities.

Terms apply. Must register for an Everyone Active card. Over 16s only. Must complete online induction prior to entry and one voucher per user. Offer ends 31/07/2017.

## Horfield Leisure Centre

Dorian Road, Horfield BS7 0XW

0117 903 1643

Everyone Active manages this facility in partnership with Bristol City Council

[www.everyoneactive.com](http://www.everyoneactive.com) [f eaHorfield](https://www.facebook.com/eaHorfield) [@eaHorfield](https://twitter.com/eaHorfield)

## everyone at Horfield Leisure Centre ACTIVE

Horfield Leisure Centre is managed by the UK's longest-standing leisure provider, Everyone Active. It has been voted as one of the top 10 leisure facilities in the country, and in Bristol it sits at the heart of the local community by providing fantastic sporting opportunities and wellbeing services.

At Everyone Active, we are on a mission to get local people more active by encouraging them to do a minimum of 30 minutes of exercise five times a week. Horfield Leisure Centre offers a huge variety of activities for customers of all ages and abilities to help them achieve this.

The centre has recently undergone an extensive **£1.5million redevelopment** to improve the facilities available, and we have been awarded the status of 'Excellent' by Sport England's leading national quality scheme, Quest.

Our fitness suite is one of the most advanced in the area. It has been refurbished with state-of-the-art Technogym equipment, meaning users are now able to automatically track their workouts to Everyone Active's free online planner. Five new 3G pitches were completed at the start of the year and virtual exercise classes have been installed as part of the improvement works.

The centre also boasts a 25m pool with viewing gallery, learner pool, three-court badminton hall, two squash courts, café and crèche.

Visitors to the centre just need to pick up a free Everyone Active card in order to enjoy all these facilities. They have the option to pay as they go, or more frequent users can take up one of our all-inclusive or swim-only memberships.

We use the centre's fantastic facilities to deliver an extensive range of activities. Our award-winning Learn to Swim programme helps swimmers of all ages grow their confidence and skills in water. Those on the scheme also receive free swim sessions when they sign up, as well as discounted membership for their family.

Gymnastics, trampolene, karate, football and badminton courses are available to youngsters, and we offer a range of holiday activity camps.

Horfield is a big part of the local community, and we have built a number of partnerships that enable us to provide specialist exercise programmes. We offer sessions for customers with health conditions such as dementia, MS and cancer, and have built great links with the local GPs and Public Health teams through our Exercise Referral scheme.

The introduction of our new 3G pitches means we are now able to provide fantastic football opportunities in partnership with local organisations, including Bristol Rovers FC and the Gloucestershire Football Association. We run inclusive sessions for young people with disabilities and even offer free coaching sessions on Friday evenings with the Bristol Rovers Community Development team.

Our team is passionate about helping people improve their health and wellbeing by getting active. Whether that means introducing first-time gym goers to the site, or motivating experienced athletes to push themselves harder, our fully qualified fitness colleagues at Horfield can help everyone achieve their goals.

If you're thinking of visiting Horfield Leisure Centre for the first time, please use one of the **FREE activity vouchers** in this month's edition of Bishopston Matters.

To find out more about Everyone Active, visit [www.everyoneactive.com](http://www.everyoneactive.com)

We look forward to helping you on your fitness journey.

**Rhys Denley Jones, General Manager**  
[rhysdenleyjones@everyoneactive.com](mailto:rhysdenleyjones@everyoneactive.com)



First choice for all your  
property maintenance needs

**CALL: 01173 255 025**

For a **LOCAL COMPANY** that delivers a reliable,  
friendly and trustworthy service



**BS9**  
OFFICE

For all those jobs  
around the house  
that **STILL** need doing!

Decorating • Carpentry • Building & Refurbishment • Roofing • Plumbing  
Electrical • General Building • Handyman • Gardens

*Our friendly, reliable and experienced team of specialist trades people can help with all  
aspects of home maintenance, from simple repairs to complete refurbishment projects.*

For a job well done by a friendly **LOCAL** team you can **trust**  
Call today on: 01173 255 025

**Professional • Local • Competitive • Fully insured • Free Quotes**



## ROMANESCA



Restaurant Review by AL

### There's no Taste like Rome.

Romanesca, sitting at the top end of Gloucester Road (opposite Tinto) is a tasty new pizzeria bringing Roman style street pizza, to the indoors. It offers a small, but perfectly formed down to earth candlelit space, to enjoy a sourdough pizza (with crispy bottom) with your friends and family.

When we visited on a bitterly cold Wednesday evening, it was great to find the tables were filling up with walk-ins and reservations. Myself and my two boys (aged 13 and 11) were warmly greeted by Greg Hyne, the owner, before being seated in front of a visually rich piece of wall art by Andy Council (Bristol's own Mural and Urban Landscape Illustrator).

As we were deciding which inviting pizza to opt for, Greg enthusiastically shared how he has always dreamt of contributing to the community by owning a restaurant. When the site became vacant on the cool, independent and friendly Gloucester Road, he could see the potential; and so, with full-on entrepreneurial spirit, combined with his love of baking and world travel experiences, he embarked on setting up Romanesca.

Our pizzas arrived on chopping boards, with a rustic look inviting us to delve in! They are flavoursome (the crust and base have that sourdough tang) and, although filling, they don't sit heavily. The kids were in their element!

We were impressed to see the menu offers traditional classic pizzas from £8. Starters

from £4.95 and desserts from £3.50, making it an affordable night out for the family or meal out with your loved one without compromising on great tasting food. Drinks-wise, bottles of wine start at £14 and a large glass is under £5. Soft fizzy drinks, tea and coffee are available too.

To finish, we shared some light, lemon polenta cake – which was good, but we all agreed the star of the evening was definitely the pizza.

When it was time to go, we left a warm, animated atmosphere – a group of ladies, a couple and a big table of young people, Jack Johnson strumming in the background – all enjoying catching up over scrumptious pizza.

**We recommend you sample the delights of Romanesca soon. Be one of the first three bookings taken each day in April, and receive 2 for 1 on Pizza!**

**Romanesca 365 Gloucester Road, BS7 8TN  
0117 329 5990 • www.romanesca.co.uk**



Owner Greg Hyne

**Reader Offer**

**2 for 1 Pizza\***

\*3 available everyday. Bookings only.  
Valid during April 2017.

**Simply quote code APRIL123  
when you book.**

## Smiles all round at Clyde House Nursery

Local Bishopston day nursery Clyde House is celebrating after a gaining a glowing report from Ofsted following their recent visit.

The nursery maintained its 'Good' rating and went on to achieve 'Outstanding' in the area of child development, welfare and behaviour.

Ofsted say, "Staff provide excellent support for children's physical and emotional well-being. They successfully help children to understand their feelings and value each other's differences. They are exemplary role models, so children behave extremely well. Staff...know the children well and meet their individual care and learning needs effectively."

Clyde House is one of two local nurseries owned by the Mann family for more than 20 years. The sister site, Ashgrove Park, is located five minutes away just off Ashley Down Road. Ashgrove Park was also inspected in 2016, and was also rated GOOD.

Lisa Mann, owner of Clyde House and Ashgrove Park Day Nurseries, said: "I'm delighted with the result of the recent inspection. I am particularly pleased to achieve Outstanding in the children's development and welfare category. We pride ourselves on our staff longevity and close relationships with the children's parents and carers. We look forward to building on this great result in the future, both at Clyde House and Ashgrove Park."

"Thanks must go to our general manager – Sue Bennett, Clyde House manager – Claire Matthews, and the whole team for all their hard work, both on the day itself and over the past year. We are also grateful to the parents who took the time to speak with the inspector and for their ongoing feedback and support."

They are currently taking bookings for places from September, with a select few sessions available from April. [www.ashgroveandclydenurseries.com](http://www.ashgroveandclydenurseries.com) • 0117 924 7488.



Images thanks to bishopstonmum.com

## Easter Baby Competition at Zzzzone Photography Studios

Local photography studio Zzzzone are running a competition for babies in the cutest Easter outfits on **Easter Sunday – 16 April 2017**.

They look forward to welcoming parents and babies to their local studio on (date please?). To take part, simply call the studio to book in, then turn up on the day with your little one and their seasonal outfit.

**The baby with the best outfit wins a FREE 12x12 Canvas, Complimentary shoot and 5x7 print too!\***

The event is open to little ones aged 6 months to 1 year old. Seasonal Easter props will be supplied for the free 10 – 15 minute photo shoot.

The day is set to be great fun, there will refreshments supplied for the local families taking part. Images from the day will be uploaded to their website for people to view, with the option to purchase some pictures if they wish.



Call the studio to book your place in our dairy...  
0117 9423 355.

ZZZONE Studios  
23 Zetland Rd  
BS6 7AH

[www.zzzzone.co.uk](http://www.zzzzone.co.uk)

\* £20 deposit required to hold booking in diary.  
Weekday appointments only.  
Limited Availability.



CLIFTON  
COLLEGE  
ESTABLISHED 1862

Holiday Club & Activity Courses

**Open**  
EVERY SCHOOL HOLIDAY

- Early Drop and Late Stay from 8am to 6pm
- Daily swimming for Juniors & Kids' Club
- Variety of specialised activity courses
- Half Day, Day and Week bookings available

For further information:

T: 0117 315 7666 E: [ccsl@cliftoncollege.com](mailto:ccsl@cliftoncollege.com)

[www.ccsl-cliftoncollege.com](http://www.ccsl-cliftoncollege.com)



**MOCKINGBIRD**  
PUTTING THE ART  
INTO PRINTING

GICLÉE • PHOTOGRAPHIC  
GREETINGS CARDS • CANVASES  
MUGS • COASTERS • PLACEMATS  
SCANNING • DESIGN  
DIGITAL • DYE SUBLIMATION

Unit 6, Studios 3 & 4, 74 Oak Road, BS7 8RZ  
t: 0117 924 8836 m: 0798 245 8847  
[www.mockingbirdpressbristol.co.uk](http://www.mockingbirdpressbristol.co.uk)

## CLEAN EXPECTATIONS

We are a dedicated, local company, who look for perfection in all areas of housework. We enable you to get your perfect clean without doing it yourself.

Bronze Clean • Gold Clean • Tailored Clean  
Internal Windows • Clothes Washing  
Extras – Ovens • Ironing

**Reader Offer: 20% OFF**  
Your first clean

Contact Stuart for Prices and Quotations

**Tel: 07759 216471**

[stuart@cleanexpectations.co.uk](mailto:stuart@cleanexpectations.co.uk)  
[www.cleanexpectations.co.uk](http://www.cleanexpectations.co.uk)

# Wanted!

## Homestay accommodation for overseas students (16+)

Throughout the year, but specifically in July and August.  
In Clifton, Cliftonwood, Redland, Cotham, Henleaze, Westbury Park,  
Stoke Bishop, Bishopston and St Andrews.

**£145 per student per week half board**  
(£155 for students under 18)



Please contact: **The English Language Centre Bristol**

**0117 970 7060**

email: [accom@elcbristol.co.uk](mailto:accom@elcbristol.co.uk)  
[www.elcbristol.co.uk](http://www.elcbristol.co.uk)

## News from The Bristol Fryer

**Fresh look for Spring!** As well as installing a new counter range inside, the local Bristol Fryer now has an improved outside area. A wooden canopy attractively shelters the outside dining area and, in the evening, the area is lit with blue LED lighting. The blue glow onto the sea creature window stickers, creates a great sea theme in which to enjoy your fish and chips.



**Fair price food –** With prices rising on raw materials, owner Fred told me he always does his best to keep his food at a fair price for his customers and is competitive within the area.

**Thank you for your custom –**

The Bristol Fryer thanks all its loyal customers for their continued support and always looks forward to welcoming new people. The local chippy is a huge supporter of Bristol Rovers. They continue to be super busy on match days, when they are happy to extend opening hours to meet demand.

**The Bristol Fryer, 431 Gloucester Rd, BS7 8TZ**  
**Tel: 0117 9515 415 • Open 7 Days**

11.30 – 2 for lunch\* & 4 – 10.30 in the evening

\*Closed lunch times Sunday and bank holiday Mondays



## Tales from Honduras

This month 24-year-old Daniel Moroz who has enjoyed living in Bishopston for the last 20 years, starting his education at St Bonaventure's, shares with us his recent volunteering experiences in Honduras, with International Citizen Service (ICS). Daniel became involved with the programme after feeling the need to set himself a new challenge!

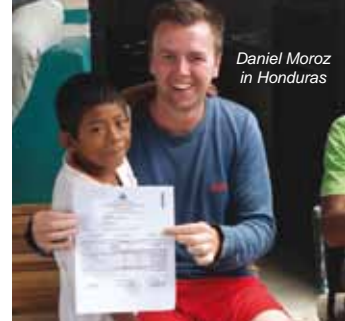
After going through the application process and training with ICS, I was allocated to a project based in Honduras, where I stayed for 3 months, returning in December 2016. I lived with a loving host family in the little rural village of San Benito. This small village housed only about 200 people, a stark contrast to life back at home!

The main focus of our project was to redevelop a deteriorating school in the centre of the village. To do this, I worked in a team of 8 UK volunteers and 9 Honduran National volunteers. We built a new school garden, storage shed, and painted all the school walls, as well 6 different murals. In addition to this, I was given the role of Community Liaison Officer and was therefore responsible for organising activities that would engage the community in a fun and educational way. I helped organise events such as: a community sports day, Zumba, coffee meet ups and after school clubs for the children.

*The programme is demanding, but highly rewarding. It's a great opportunity for personal development and I gained a lot from the whole experience. I have learnt about a completely different culture, tried new food and learnt lots of new dances! My Spanish improved so that by the end of the placement I was able to hold proper Spanish conversations with the local people. I have gained a second Honduran family along with plenty of new friends, both Honduran and British.*

A commitment of the ICS programme is that once you return, you engage in 'Action at Home'. After helping a community over 5,000 miles away, I am now looking at ways to connect and assist my local community. Although the village of San Benito and Bishopston are physically very different, there are still several similarities to be drawn in the way the communities work and their basic principles.

If you would like to learn more about Daniel's work, you can e-mail: [danmoroz@hotmail.co.uk](mailto:danmoroz@hotmail.co.uk)  
For more about ICS visit: [www.volunteers.org](http://www.volunteers.org)



Daniel Moroz in Honduras

**UWE Bristol** | University of the West of England



## Train to Teach with UWE Bristol from September 2017

Places available to train to teach the following subjects at secondary school level: Art & Design, Business, Computer Science, English, Geography, History, Mathematics, Modern Languages, Science (Biology, Chemistry or Physics) plus Primary School Direct.

The programme trains teachers to teach the 11-16 age group, along with opportunities to teach at A level.

- Tax-free bursaries of up to £30,000 available in some subjects.
- Well-established partnership with many local schools.
- Employment rate is 94%.

**Interested?** What to do next: Visit [uwe.ac.uk/traintoteach](http://uwe.ac.uk/traintoteach) and fill in the form to find out more. Come to one of our drop-in sessions (search **UWE Bristol PGCE drop-in** online to find out more). Apply through UCAS (search **UCAS Teacher Training** online).

*"I had a fantastic experience during my PGCE at UWE Bristol. I feel it equipped me immensely well throughout the year; there were a number of sessions that I truly enjoyed and I found incredibly rich and fulfilling."*

Trainee Teacher, PGCE Secondary Mathematics, 2014–15

## Spring is in the hair at Hair Mechanics

Traditionally a time for new arrivals, Hair Mechanics is delighted to announce the birth of salon manager Vickie's first baby – Jenson Paul Williams. The little fella arrived on 1 March 2017 at 7lb, 11oz. When I popped into the salon recently I was lucky to get a look at the gorgeous little chap. As you can see by the photo, proud new mum Vickie is looking as radiant as ever with her beautiful boy. I am sure we all join the Hair Mechanics team in wishing Vickie and dad Mike – congratulations! Vickie was already talking about coming back in to join in the forthcoming Wella training day, so I am sure you will see her back at the salon for a few hours soon.

Wella will be visiting the salon this April to deliver a 'Trend Vision' training day. The stylists always find these sessions inspirational – learning more about the latest products, colours, techniques and styles.

Trainee stylist Rae, will soon have completed her level 2 qualification and will then move on to level 3. Owner Jon told me how rewarding it is to support young talent and watch them blossom into professional stylists. Rae is doing really well and will now be starting basic colours on clients.

As we look to Easter, the salon reminds clients, they will be open on Good Friday 9-4 but closed on Easter Saturday. Hair Mechanics Gift vouchers make a great alternative to chocolate!

**Hair Mechanics, 69 Ashley Down Road, BS7 9JN**  
**Tel: 0117 924 3611 • Gift vouchers available!**



Introducing baby Jenson



## Kemps Jewellers

established 1881

*Not your normal sleepy village jeweller ...*

*A large range of new and second hand diamond jewellery*

*Gifts for all occasions*

*Repairs & Bespoke jewellery service*

*Competitively priced*

*Professional friendly advice • Beautiful gift ideas*

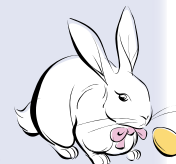
**9 Carlton Court, Westbury-on-Trym**

**Tel 0117 950 5090 • WWW.KEMPSJEWELLERS.COM**



## EGGTASTIC EASTER! with GRBID

**Great news! The Gloucester Road Business Improvement District (GRBID) are busy bunnies organising a fabulous family Easter Bunny Hunt!**



From 8 to 15 April, little lost bunny rabbits will be hidden in a number of shops in the BID area (from Cox & Baloneys to Ocean Estate Agents and including Zetland Road). Find the names of at least 12 lost little rabbits and you can claim a free chocolate Easter egg as well as free entry to a prize draw! Look out for a rabbit poster in the windows of participating shops.

Details and an entry form can be downloaded from <http://gloucesterroadshoppingquarter.co.uk> from 31 March or printed copies will be available from the following shops: Cheltenham Road – Enso Martial Arts, Chattels, 7th Sea, The Parlour, Gloucester Road – Totally Toys, Flo Jos, Cartridge Right, El Colmado, The Hobgoblin, Cafe Ronak, Murrays Butchers, Zetland Road – Zzzzone. **HAPPY (s)HOPPING!**

### Summary of other BID news

BID is financially supporting BCR Neighbourhood Partnership, whose funding from the council has been cut, to enable worthwhile projects in the BID area to continue.

The group is sad to see the closure of the Olive Shed and Biblos on the Hill.

Concerns about rate increases and the impact on local businesses will be addressed at a forthcoming meeting.

You can take your plastic bags to the lower Gloucester Rd Co-op. These items are not picked up by council recycling but our local Co-op is happy to take them and put in with their recycling.

**Get in touch with The GRBID via:**  
**[grbidoffice@gmail.com](mailto:grbidoffice@gmail.com)**

## Little Tinkers Silver Co.



Fingerprint, handprint, footprint fine silver jewellery. Based locally.

**T: 07717 722 517**

**E: [lucy@littletinkerssilver.co.uk](mailto:lucy@littletinkerssilver.co.uk)**  
**[www.littletinkerssilver.co.uk](http://www.littletinkerssilver.co.uk)**



## News from the Friends of Ashley Down Green

As with all parks' groups we are enjoying the signs of spring and the rewards for our efforts back in the autumn. Thank you to all the children and grown-ups who helped plant them.



Come and have a walk across the green, enjoy the views and see the signs of spring for yourself.

Now that the new play area is finished and the access from Stoney Lane is open, we will be planning some events on the green for the summer months.

Friends of Ashley Down Green meet four times a year. If you would like to join us or just be kept informed of our latest news, feel free to contact us –

**Email us at: [ashleydowngreen@gmail.com](mailto:ashleydowngreen@gmail.com)**

**Or follow us on** **@FriendsADG**

**@FriendsAD**



## The Flower Shop

145 Gloucester Road, BS7 8BA



*Celebrate Spring indoors – beautiful bouquets for Easter*

**Local & National deliveries available.**

*Visit our website to find out more!*

**[www.theflowershopbristol.com](http://www.theflowershopbristol.com)**

**Tel 0117 942 0050**

# Clifton REVOLUTION

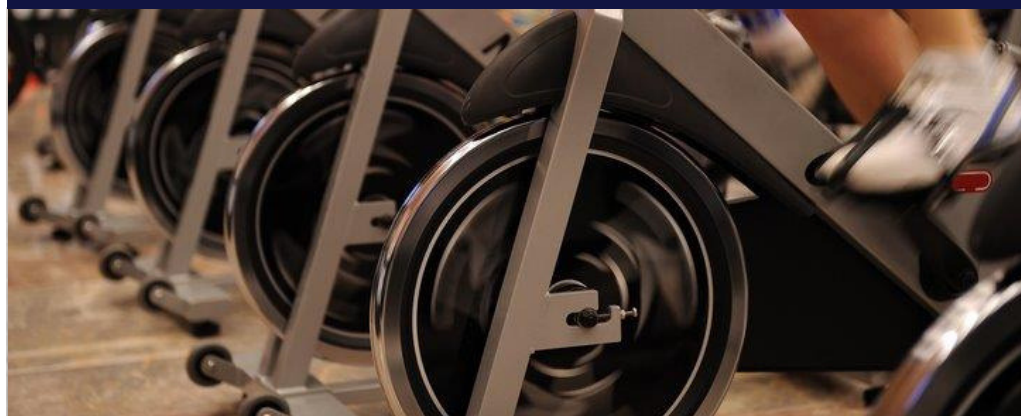
powered by foxcycling

Opening May 1st!



Bristol's premier dedicated indoor cycling studio - an enjoyable and effective workout for all ages and abilities

Register and book now for your free taster session:



Using the latest MyZone cardio tracking technology and easy online booking.

[www.cliftonrevolution.com](http://www.cliftonrevolution.com)  
Guthrie Road, BS8 3EZ



## Join the revolution – and get faster results with your fitness

It can be frustrating working at your fitness and feeling you're not reaching your goals. Three things help ensure you'll get results and stay motivated: doing something specifically designed to efficiently get results, having a fun experience that gets you hooked, and thirdly, tracking the results you get. Clifton Revolution offers each of these.

Clifton Revolution is a dedicated indoor cycling studio opening on 1 May in Guthrie Road as part of Clifton College and powered by Fox Cycling, using the latest in studio cycling bikes and heart rate tracking technology from MyZone, as well as expert Fox Cycling instructors.

Cardio tracking is a way to monitor intensity, not only to ensure you're staying safe with your workout, but also to increase the efficiency of the time you spend exercising. With this technology, riders will get the maximum benefit out of each minute.

"The Fox Cycling approach is innovative," says Angela Reed-Fox, Fox Cycling's fitness nurse.

"We've taken every aspect of the cycling session apart, and developed a more scientific, evidence-based process which makes it more enjoyable and effective for everyone. Cycling is low impact, so it's particularly good for those getting into fitness for the

first time (or getting back into it), and for those with joint issues. We offer newcomers, progressive and advanced classes to cater for all ages, fitness, and confidence levels.

Each session includes cardio tracking from MyZone. "This is a super-engaging, fun element, but also, it enables a safer workout," continues Angela. "We've had a few instances where the technology picked up cardiac anomalies, which after medical investigation led to life-saving surgery."

Fox Cycling instructors are trained far beyond industry standards; those who have previously qualified elsewhere undergo specialised 'top-up' training to become a Fox instructor.

**Clifton Revolution opens 1st May in Guthrie Road BS8 3EZ. Details at [www.cliftonrevolution.com](http://www.cliftonrevolution.com) With easy online booking, come and enjoy the welcoming and encouraging atmosphere, best technology and instructors.**



## PEAK PERFORMANCE PHYSIO & PILATES



Expert individualised treatment for all conditions and ages.

### Including -

- Sports injury
- Osteoarthritis management
- Spinal conditions
- Sports massage
- Work related pain and ergonomic advice
- Pilates - classes, small/group and individuals



**0117 910 8041**

Helping you to achieve or regain your potential

Located at Gloucestershire County Cricket Club, The County Ground, Nevil Road, Bristol BS7 9EJ

[www.peak-performance-physio.co.uk](http://www.peak-performance-physio.co.uk)

## Improve the Health, Mood and Fitness of You and Your Family



**One bite at a time**

Learn how diet can improve your health, in a small group of 8-10. Classes take place weekly, daytime and evening.

## WHERE?

Trainners, Ladies only gym, 22 Kellaway Avenue, Bristol BS6 7XR Tel: 0117 944 6650

## FOR MORE DETAILS

Contact Alex: Mob: 07511 647 569  
Email: [alex@nutritioncoachbristol.co.uk](mailto:alex@nutritioncoachbristol.co.uk)

8 week course – Cost £80

[www.nutritioncoachbristol.co.uk](http://www.nutritioncoachbristol.co.uk)

[www.recoverfromcfsandme.com](http://www.recoverfromcfsandme.com)

nutrition coach bristol recover from cfs and me



## Oh La La Fun with French – Putting the laughter back into language learning

For those of you who fancied a little *Oh La La* on a Monday morning in the grand surroundings of Kings Weston House, the French taster session on March 13th hit the spot.

Three highly experienced local French teachers – Sylvia Aldous, Marie-Christine Page and Kerry Postle (pictured right), put their creative heads together to offer people keen to speak French an immersive experience that challenged and entertained. It was certainly a far cry from the average French lesson. Made up of interactive activities, games, treasure hunts and more, they came up with a language package that was useful, engaging, active and fun and left people wanting more.

If you missed it, worry not: more taster sessions are in the offing. In addition, based on the response of those lucky enough to have got a place on the first taster session, 5-week French language courses are now available. Designed to boost the confidence and language knowledge of anyone keen on brushing up their speaking skills in a friendly, supportive group, these courses are designed to put the laughter back into learning a language. Courses for those with rusty French are available and, depending on demand, we will offer courses for complete beginners as well as under-confident advanced learners.

Please contact the Oh La La team to express an interest in taster sessions or to receive details of language courses please do get in touch via the contact details below.

French tasters and language courses are now available as day and evening sessions.

**Prices: 90 minute taster sessions: £12 / 5 x 90 minutes 'lessons': £60**

**TO CONTACT the Oh La La team: e-mail: [ohlalafunwithfrench@gmail.com](mailto:ohlalafunwithfrench@gmail.com)**

**Website : [ohlalafunwithfrench.wordpress.com](http://ohlalafunwithfrench.wordpress.com) • Follow us on twitter: [@ohlala\\_french](https://twitter.com/ohlala_french)**



## The 'Power of Buddhism' a talk by His Holiness Ratna Vajra Rinpoche

As the 42nd Sakya Trizin or head of the Sakya tradition of Tibetan Buddhism, His Holiness Ratna Vajra Rinpoche is one of the most important of the younger generation of Buddhist teachers alive today. In this talk, His Holiness will describe how through practising the Buddhist path, it is still possible to achieve lasting happiness and freedom from suffering, despite the stresses and turbulence of the modern world.

This event is hosted by Sakya Buddhist Centre Bristol, part of Dechen and founded by Lama Jampa Thaye forty years ago in 1977. To find out more, visit [www.sakyabristol.org](http://www.sakyabristol.org) or [www.dechen.org/bristol](http://www.dechen.org/bristol).

### The Power of Buddhism

A Public Talk by  
His Holiness  
Ratna Vajra Rinpoche  
Friday 26th May 8.00pm

(Doors open from 7pm)  
City Hall, College Green, BS1 5TR

A rare opportunity to hear a great  
Buddhist master describe the  
transformative power of Buddhism.

Fee: £12 (Concessions: £8)  
Tickets on the door or book online at:  
[www.sakyabristol.org](http://www.sakyabristol.org)

All welcome

Presented by Sakya Buddhist Centre Bristol  
0117 924 4424  
[www.sakyabristol.org](http://www.sakyabristol.org)  
[www.dechen.org](http://www.dechen.org)

Bristol Buddhist  
Meditation Meetup



### Flow Motion Massage and Pilates Bristol

[www.flowmotiontherapies.co.uk](http://www.flowmotiontherapies.co.uk)

Pilates Foundation Teacher / Holistic Massage Practitioner

**NEW Friday 12.45pm Beginner Pilates Class  
BOOK NOW!**

Quaker Meeting House, 300 Gloucester Rd, BS7 8DP

£8 per class, conc £7, 5 classes for £35, advance booking required. Contact Emilie on 07928 675721 or e-mail: [flowmotiontherapies@gmail.com](mailto:flowmotiontherapies@gmail.com)



## Expert views on air quality to feature at public meeting on Tuesday 4 April.

*How does air pollution affect our lives in Bishopston?  
What's the Council doing to monitor air quality?  
What can we do in our community to improve things?*

These questions and lots more are set for debate by experts and the public alike at a meeting set up by The Bishopston Society in conjunction with Sustainable Bishopston. The two local community groups are set to welcome three experts who've recently written on these subjects: Professor Jim Longhurst of UWE's Air Quality Management Resource Centre, Gavin Spittlehouse from Sustainable Bishopston, and Councillor Tom Brook, Labour & Co-op Councillor for Bishopston and Ashley Down.

**The meeting will be held on Tuesday 4 April at 7pm (doors open 6.45pm) at Gloucestershire Cricket Ground, Nevil Road, BS7 9EJ.**

Spokesman for the Society Nick Plant said "We're glad to have taken forward recent coverage of this important topic by featuring three expert articles in our newsletter and on our web site, and we're delighted that Jim, Gavin and Tom all agreed to come along in person to stimulate debate".

The special event will also include responses from members, a workshop session for visitors to decide what we can do about the problem, and other community contributions, as well as the legendary Bishopston Society Open Forum, and a chance to meet others and mingle over free refreshments. Admission is free to members, only £2 for non-members on the door – no need to book.

Further details, and the full text of all three expert articles on air quality in the global context, measuring and responding to pollution, and how Bristol City Council can respond, can be found at – [www.bishopstonsociety.org.uk](http://www.bishopstonsociety.org.uk)

## The Bowen Technique at Bishopstonbowen



Gentle relief for  
musculo-skeletal pain  
Shoulder and Neck pain  
Back Ache  
Knee Pain  
Hip Issues  
Free initial  
consultations

**Jane Hird, Cert ECBS, BTPA, CNHC  
The Bristol Natural Health Service and  
Carpe Diem, Staple Hill**

**Mob 07999 711846**

**[www.bishopstonbowen.com](http://www.bishopstonbowen.com)**

**Email [jane.hird@blueyonder.co.uk](mailto:jane.hird@blueyonder.co.uk)**



**Sakya Buddhist Centre**  
121 Sommerville Road,  
St Andrews BS6 5BX  
0117 924 4424  
[bristol@dechen.org](mailto:bristol@dechen.org)

*Celebrating 40 Years 1977-2017*

**Buddhist Meditation**  
Wednesdays 10.30am  
**Discover Buddhism: Meditation & talks**  
Tuesdays 8.00pm & Saturdays 10.30am  
All above sessions at Sakya Buddhist Centre

**Discover Buddhism in Clifton**  
Thursdays 8.00pm  
Multifaith Chaplaincy, 1 Woodland Road BS8 1AU  
Suggested donation £4; £2 for Wednesdays

Bristol Buddhist  
Meditation Meetup

[www.sakyabristol.org](http://www.sakyabristol.org)  
[www.dechen.org](http://www.dechen.org)

## Nursery to Year 6 Open Morning: Wednesday 26th April 2017



**“The quality of the pupils’  
achievements and learning  
is excellent”**

ISI Inspection 2016

0117 933 9087 | [admissions@cliftonhigh.bristol.sch.uk](mailto:admissions@cliftonhigh.bristol.sch.uk)

The Diamond Edge Model  Realising Individual Brilliance

## Clifton High sponsorship at Bristol Museums

Clifton High School is delighted to announce a new and close association with Bristol Museums as a major sponsor for some important upcoming events. The first, ‘Pliosaurus! Face to Face with a Jurassic Beast’ is Bristol Museum & Art Gallery’s major new exhibition about prehistoric marine reptiles known as ‘Sea Monsters’. The pliosaur specimen on display was discovered in Wiltshire in 1994 and is the world’s only known example of this new species. **It will be on public display at the Museum for the first time this summer – from 17th June to 7th January 2018.** The ‘pay what you think’ exhibition is anticipated to attract some 70,000 visitors.

Secondly, Clifton High will also be the sponsor for the Annual Education Programme at Bristol Museums, now one of the largest programmes in the South West. Workshop experiences at all six museums are offered to pupils across the region from Early Years Foundation Stage through to A level. In particular the programme also seeks to engage schools that don’t typically visit museums.



In addition to sponsoring Bristol Museums education programme, we hope that the Museum will make some use of our ‘Masterclass’ bus to take exhibits to pupils who might otherwise not be able to see them.

Clifton High is delighted to be supporting the educational and exhibition programmes at Bristol Museums; we look forward to a rewarding partnership. For further information –

**visit [www.bristolmuseums.org.uk/pliosaurus](http://www.bristolmuseums.org.uk/pliosaurus) and [www.bristolmuseums.org.uk/learning](http://www.bristolmuseums.org.uk/learning)**

## Swan Cleaning



*An experienced, family owned domestic and commercial cleaning company operating in Bristol and the surrounding areas.*

*Friendly, hard working and skilled at all areas of cleaning including specialist cleaning jobs.*

**End of Tenancy Cleans • Oven Cleaning • Carpet Shampooing • Detailed Cleaning**

*Fully insured, fully equipped and fully trusted, there isn't much we can't clean.*

For more information or a FREE quotation please call **Peter on 07508 214 525**

or send an e-mail to [info@swanenterprisesbristol.com](mailto:info@swanenterprisesbristol.com)

and we will be happy to discuss any cleaning work you need doing.



*Bespoke cleaning is our speciality*

## Fledgling birds and how to help them



Every Spring we receive a number of calls to the practice from members of the public concerned about what to do as they have found a young bird on the ground, 'abandoned'. We also see a significant number of young birds brought

into the practice that have been caught by cats or picked up from the ground by well-meaning members of the public.

### So, what should you do for the fledglings at this time of year?

A fledgling is a young bird that has developed its feathers but cannot yet fly. It will leave the nest and flutter down to the ground where its parent will be watching over and feeding it at regular intervals of 15 to 30 minutes. It is not able to fly back up into the nest. This is a normal stage of development for birds. Sometimes the young bird can spend a day or two on the ground while waiting for its flight feathers to fully develop.

The parent bird will be somewhere close by and there is no need to interfere with these fledglings. If the fledgling is in imminent danger it can be moved a short distance but within hearing of the parent bird. Birds have a poor sense of smell so handling a young bird does not cause the parent birds to abandon it.

The only exceptions to this are swallows, swifts and house martins who fly straight from the nest and should never be found on the ground.

Most importantly if you do have a cat or a dog please keep him or her inside the house and away from possible prey.

Removal of a fledgling from the wild is usually the worst thing that can be done and reduces its chances of survival hugely. Fledglings should be left where they are with their parents if at all possible.

Occasionally a tiny bird is found on the ground with no feathers or just fluffy down. This is a nestling that has fallen out of its nest by accident and should not be on the ground. If you are not sure if you have a fledgling or nestling, a fledgling has developed its grip and can perch on a finger whereas a nestling cannot.

If the nestling appears fit and healthy and you know which nest it fell out of then you can put it back. If you cannot put the nestling back into its nest, then it will need hand-rearing and it is best taken to a wildlife rescue centre for expert care.

Sometimes parent birds sense if there is a problem with a chick and will eject an unhealthy chick from the nest on purpose.

Attempting to hand-rear a nestling or fledgling yourself despite your best efforts, is likely to end in failure and the loss of the bird as they are very difficult to hand-rear. If you need any help or advice on local wildlife rescue centres do give us a call and we will be pleased to help.

### Nicky Bromhall

**Veterinary Surgeon, Animal Health Centre**

**If you would like further advice, call us on 0117 924 7832.**



## On the run for local Greyhound & Lurcher Charity

On the evening of Saturday 25 February, the intrepid 'Team Dawglers' from Animal Health Centre, set off on a dark, wet and muddy 5k run for charity and triumphed!

'Back to Black' is one of a series of 'Wild Night Runs' which take place around the UK – cross-country trail races in the dark, not for the faint-hearted. Our race was in Leigh Woods in pouring rain and bog-like conditions underfoot. Over 250 runners took part in both a 5k and a 10k.

Debbie Coles, receptionist at Animal Health Centre had the idea to enter the race and at the same time raise money for charity. All six of our staff ran, Debbie, Su, Sam, Lela, Sophie and Nicky and also Debbie's two small children, Harry aged 6 and Brianna 4, ran in the junior race – all wearing dog ears and tails to add to the fun.

Cold and soaked we all had a great time; the running conditions were very tough and running in the dark was a new experience to all, but team spirit won the day. We finished as first team in the 5k and one of our number, Nicky Bromhall was the first lady home. A fantastic team bonding experience.

We raised over £1000 for DAWG, the local greyhound and lurcher rescue and rehoming charity.



DAWG do an amazing job taking on rescued and retired dogs, nursing them

back to health where necessary, and finding them forever homes. We were cheered on by 11 dogs that came to support us on the night.

So, if you fancy a mad run in the dark do Google Wild Night Runs and join in, all you need is a head torch and a sense of adventure.

**If you are interested in supporting DAWG or rehoming a dog please contact Gerry Watkins on 0117 9695332 they would love to hear from you.**

And congratulations to Team Dawglers, and here's to our next challenge!

**Nicky Bromhall, Animal Health Centre**



## Animal Health Centre

Gloucester Road's  
Independent Veterinary Practice

A small expert team providing friendly, and experienced care for your pet.

Our facilities include:

- Appointment system
- Free Nurse's clinics • Modern surgical facilities
- In-house laboratory • Full dental facilities
- Annual health checks • Weight-watchers clinics
- Advice on buying new pets • 24 Hr emergency service

Nicky Bromhall BVSc MRCVS  
Principal Veterinary Surgeon since 2002

358 Gloucester Bristol BS7 8TP  
 [www.animalhealthcentre.org](http://www.animalhealthcentre.org)  
 0117 9247832



Puppy and Kitten  
Packages Available





## CASA COLOUR

Painting & Decorating



### Specialist Interior & Exterior Decorating

Hand painted kitchen furniture • Wall & ceiling decoration  
 Wallpaper hanging • Traditional painting • Airless and HVLP spraying

T: 01275 791 273 – M: 07817 516 472

www.casacolour.co.uk      email: carlos@casacolour.co.uk




## News from the green room

### Organic Hair Salon

**KEVIN.MURPHY Products** – The Green Room is pleased to be a Kevin Murphy concept salon. Born from the same philosophy as skincare, KEVIN.MURPHY products are weightlessly designed to deliver performance, strength and longevity. The Green Room carries a wide range of these fantastic products, including RE.STORE – containing superfood proteins like pineapple fruit extract to nourish and replenish the hair.

The salon also now stocks mini Kevin Murphy products. Perfect for sampling one of these outstanding products or for when you travel – so get planning that Spring break! Speak to one of the friendly team for more information.

**Easter Gifts** – why not treat someone special to Gift Vouchers to the gorgeous Gloucester Road salon this Easter.

*For a fresh look this Spring get in touch with the Green Room and book an appointment today!*

15 The Promenade, Gloucester Rd, BS7 8AL • Tel: 0117 942 75 75

RE.STORE



The Green Room



Trade in your weight-loss  
approach to Weight Watchers in  
Bristol  
today

Move over to the most liveable plan, for a full month's  
membership FREE at your local meeting today\*

No food is off limits!



Claire, Cirencester

Visit [weightwatcherslocal.co.uk](http://weightwatcherslocal.co.uk) or call 0345 677 7788 to find your nearest meeting

\*1. Join Weight Watchers as a Meeting + Online member between Sunday 19th March and Saturday 8th April 2017 and you will be entitled to a free month if you bring along any materials, which have a monetary value for example a recipe book or memberships card from any other weight loss plan. 2. You must give the materials to the Coach in your first meeting. These materials will be kept by the Coach in order to provide the free months Weight Watchers membership. Following the first free month Meetings + Online Subscriptions will automatically renew at the standard monthly rate (currently £21.45) until you cancel. For Meetings + Online purchases made in a meeting activation needs to be completed on our website. 3. Offer open to New members only. 4. Offer open to UK residents (excluding Channel Islands & Northern Ireland) who are 18 years and over. 5. One claim per person for new members and is non-transferable. The offer cannot be combined with other offers. 6. Offer is subject to availability. Weight Watchers reserve the right to change, amend or cancel this offer at any time. 7. Offer available in selected postcodes, see [weightwatcherslocal.co.uk](http://weightwatcherslocal.co.uk) to check if your local meeting is included in the offer.

## THE NAIL SHED

Nails, Tanning & Beauty

78 Gloucester Road, Bishopston, Bristol, BS7 8BN

01179427116

## LUXURY NAIL & BEAUTY SALON ON GLOUCESTER ROAD

MANICURES - PEDICURES - WAXING -  
TANNING - FACIALS - MASSAGE - TINTING  
- PARTIES/CELEBRATIONS



★★★★★ *Abulous, the best customer service I've ever received!*

★★★★★ *inally I have found my favourite salon!*

Please quote exclusive discount code **SBM030** to receive  
20% off any treatment Tuesday-Friday throughout April



## News from Golden Hill Community Garden

Hi everyone,

**Our Sunday Club for families who have a child/ren with a special educational need or disability starts on 2 April.** It'll be a lovely monthly club for families to come and enjoy the garden together. Toasting snacks, exploring nature, pond dipping, parachute games, sensory activities and songs. Booking essential. Thanks to the Quartet Community and John James Foundations for their funding and this is just £5 per session, £3 additional siblings

AND more for **families with a child/ren with SEND at our 20 April Adventure day, 10-4.** We'll be cooking pizza, playing games, making a mess and more! One parent said, last year, "I really feel part of something here". Thanks to the Avon and Somerset Police for funding this and it's just £5.

Badger and Captain Clare be running our usual and always popular **Adventure Days for 5-12-year olds** this holiday, **11 and 18 April, 10 am - 4 pm**; the theme is outlaws, the wildwood and fairy tales! We'll be making, crafting, playing, and trying not to get eaten by wolves. **A day of wild fun and work out for the imagination!** £26 including pizza from the giant frog. Only 16 places, so booking essential.

And for grownups we've got lots coming up including... Qi in the Garden! **We'll be running free Qi Gong sessions fortnightly on Tuesdays, 2:30-3:00, starting 12 April for 12 weeks.** Everyone is welcome to pop in and do some **gentle stretching and breathing exercises** in our beautiful garden

### New Passage Cat Kennels



Quiet location, Nr Pilning  
10 mins drive from cribs  
causeway.

Viewing welcomed

Tel 01454 632456

[www.catkennels.co.uk](http://www.catkennels.co.uk)

to a soundtrack of bird song, and have a cup of tea afterwards. Enjoy a moment of tranquillity in our hectic times. No experience or special clothing required.

And, of course, we'll be busy gardening as normal. **Come and find us any Wednesday anytime between 10 am and 4 pm** behind Horfield Prison, come get involved or just come and say hi. There's so much to plant this time of year and we'll be preparing for our giant **big spring fair - Saturday 13 May, 1-4 pm!** Music, dancing, plant sale, free kids' activities, sensory trail, pond dipping, pizza and cake. Get it in the diary!

See you in the garden

*Lucy Mitchell*

For more info - 07506 905 394  
[thegoldenhillcommunitygarden.com](http://thegoldenhillcommunitygarden.com)

### DOES YOUR CHILD KEEP CATCHING HEAD LICE?



The truth is they probably aren't. More likely it's the same infestation you don't quite clear, picking itself back up. The fact is 80% of the time the products fail you. What's missed hatches, grows up, lays more eggs & the struggle goes on. We stop that. 100%. We clear it all out and shut it down. No more wasted time, energy & money down the drain on useless product - and importantly a healthier, happier child

CALL THE LICE EXPERTS  
**07941 034 797**  
BRISTOL@THEHAIRFORCE.CO.UK  
OR VISIT [WWW.THEHAIRFORCE.CO.UK](http://WWW.THEHAIRFORCE.CO.UK)



## Things you didn't know about First Bristol

**Greening the fleet** - In September 2014 James Freeman became MD of First Bristol. Shortly after his arrival he brought the Bio-Methane powered 'poo bus' in 2015 to Bristol in time for the Green Capital year, followed a year later by virtual electric hybrid buses. In the past two years the company spent approximately £25 million to turn a quarter of its Bristol fleet in brandnew environmentally friendly buses, and is the only bus company in Bristol that invests in low-carbon buses. It now operates 100 buses that produce 95% less oxides of nitrogen emissions, and as a result will help improve air quality along the routes.

James started his 42-year spanning career in the bus industry, right here in Bristol as a grade 1b clerk way back in April 1975. He didn't become a bus man by accident; when at school he was asked what he wanted to be when he grew up, he answered: "I want to run a bus company". One phone call from the school's careers advisor to the National Bus Company was all it took.

**Safer Journey cards** - To help people who have certain needs, particularly those with hidden disabilities, First Bristol has created cards, which allow passengers to discreetly communicate a specific message to the driver. Available from the Bristol bus station or from its website for free, these Safe Journey cards or Better Journey cards have pre-printed wording such as 'Please speak slowly, I am hard of hearing', 'Please be patient, I have a hidden disability', or 'Please tell me when we reach my destination'. There are also sections where the customer can write his/her own message to the driver. [www.firstgroup.com/bristol-bath-and-west/plan-journey/safe-journey-card](http://www.firstgroup.com/bristol-bath-and-west/plan-journey/safe-journey-card)

**School bus** - When buses are coming to the end of their life, a bus company either sell them second hand or as scrap. At First, the company has found another purpose for them. The engineers remove the engine and hydraulic parts, paint the outside, reorganise the interior by taking seats out and putting some tables in and recover remaining seats with new vinyl. The buses are then donated as static buses to primary schools, where they are used as libraries, games area, class rooms or staff rooms. The company has done about six of these school projects across Bristol and the wider area, and one of the double deckers got a second lease of life as a complete sensory environment for a special needs school. Selling busses on is quick and easy; refurbishing them for use by primary schools takes time, effort and costs money - but it's all worth it, because the kids love them.

**Affordable travel** - It's worth knowing that Bristol bus fares are amongst the most affordable in the country. An independent benchmarking study of bus fares across Great Britain published in February showed that almost 90% of the UK pays more for a comparable journey than the £1.50 for a Bristol Inner Zone adult single on the company's mTicket app.

**Art on the move** - A bus driver of our Service 5 came up with the idea of displaying artwork from St Werburgh's Primary School on the buses to brighten up the customers' journey. The school decided to celebrate some of the religious festivals, with the first being Holi, the Hindu festival of colour by creating sun catchers to go on the windows of the bus. The children were invited on a bus trip to see their artwork and were treated to a VIP tour of the bus station, including a visit to the traffic control room. 9,000 passengers a week will see the artwork - more than any local art gallery!

**Website:** [www.firstgroup.com/bristol](http://www.firstgroup.com/bristol)



James Freeman,  
Managing Director  
of First Bristol



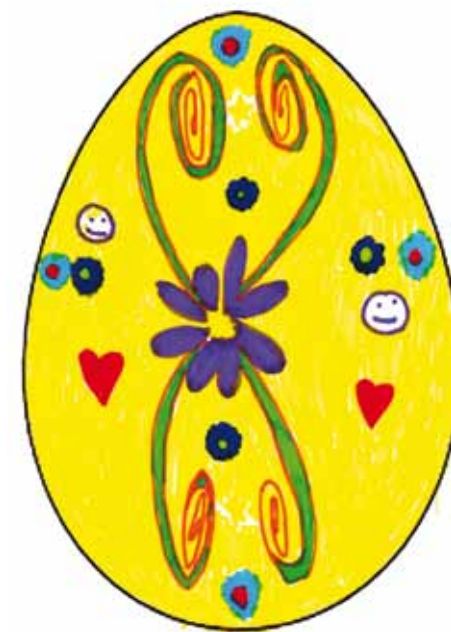
100 low-carbon buses



Static buses for  
primary schools



Art on the move with  
St Werburgh's Primary



## Biodynamic Craniosacral Therapy

**Samasuri Howes**  
Bishopston

A gentle technique that can help many health conditions and suitable for all ages

[www.samasuri.co.uk](http://www.samasuri.co.uk) / 07496 773 664

Samasuri trained at the Karuna institute, Devon and has been working in CST since 2016. She also works as a medically trained GP in Bristol and has 2 young daughters. She is a member of the CSTA and has regular supervision.

**What is Craniosacral Therapy?** It is a hands on technique that gives any BODY an opportunity to drop into a state of deeper relaxation of mind, body and spirit. This allows any unhelpful states of holding in any of these levels to melt away, returning the person to a state of greater health. Great for any age from newborn to adult.

**Biodynamic?** We work in a way that is led by the body and its own inherent health.

**Quote 'Bishopston Matters' to receive £10 off your first treatment.**



## Sleep Therapy

Christabel Majendie BSc, MSc, MBSPsS

**Can't sleep?**

**Try the Sleep Course**

I am a psychologist working in the Bristol area, providing therapy for sleep problems. This uses a combination of cognitive and behavioural techniques together with motivational interviewing.

Cognitive techniques address the mental factors that contribute to insomnia such as thoughts and beliefs about sleep and a racing mind. Behavioural therapy aims to re-establish lost connections between the bedroom and sleep and to help individuals establish a healthy sleep routine. In this way sleep becomes a more automatic process and a more reliable sleep pattern is established. Motivational interviewing focuses on the motivational processes within an individual that bring about change.

Evidence shows that these techniques help to overcome insomnia and sleep problems in the long term, whereas the effects of sleeping pills are mostly short-term.

**I run group, individual and skype sessions. For more information contact me on – 07881 651091 or [christabelmajendie@hotmail.com](mailto:christabelmajendie@hotmail.com) or visit [www.christabelmajendie.co.uk](http://www.christabelmajendie.co.uk).**



## Keep smiling with Horfield Dental Care

There was a friendly, positive energy when I met with the vibrant team at Horfield Dental Care at 525 Gloucester Road, and this is largely thanks to owner Phillip Chan (pictured right).

Phillip grew up in Cornwall and attended Cardiff University, from where he qualified in 2007. His vocational training in Bristol gave him a love of the city which simplified the decision to choose Bristol as the place to stay and set up a practice.

The dream was realised in 2014 when the opportunity to take over a practice on Gloucester Road came up – a surgery established since the 1940s! After an extensive refurbishment in 2015, of which the results are well worth it – he has not looked back. Phillip and his young family have now made their home in St Andrews, where they love the proximity to Gloucester Road, which he described as, "Simply a great place to live and work and gets better all the time".

There are two other dentists that work alongside Phillip, with the assistance of 2 hygienists, 5 nurses and a practice manager. In April there are plans to bring in a dental therapist.

The surgery offers all the general dentistry services alongside the additional, complementary treatments of – dental implants, sedation, cosmetic

braces, general cosmetic treatments and teeth whitening. The team works hard to deliver the most up-to-date treatments available to their patients.

Phillip, is a well respected clinician in dental implants and can also be found imparting that skill across dental surgeries in South Wales.

Fellow dentist, Laurence Folland has recently completed an advanced qualification for dental sedation, allowing the team to deliver a safe, effective sedation service.

To assist with the pressures of modern day living, Horfield Dental Care now offers a very quick, straightforward online registration and appointment booking service via their new website. This facility has already been met with great positivity from their patients and the practice.

**If you would like to make an appointment, do get in touch by calling 0117 951 3026 or via their website [www.horfielddentalcare.co.uk](http://www.horfielddentalcare.co.uk)**



**Jo Gray Hypnotherapy**

**What do you want to change in your life?**

I am a qualified and experienced hypnotherapist practising just a few minutes from St Andrews Park.

I draw on 40 years experience as a social worker and senior manager to understand what you want to change, and help you change it.

I can help you with problems such as:

- Confidence
- Anxiety
- Phobias
- Poor Sleep
- Stress
- Addiction
- Eating disorders
- Depression

To book a **free** initial consultation ring  
07503 152 014  
or visit

[www.jograyhypnotherapy.co.uk](http://www.jograyhypnotherapy.co.uk)  
[www.facebook.com/jograyhypnotherapy](https://www.facebook.com/jograyhypnotherapy)



**DO YOU NEED ADVICE  
ON YOUR SETTLEMENT  
AGREEMENT?**

→ DISCOVER MORE

0117 985 1026  
[www.scraselaw.com](http://www.scraselaw.com)

The Coach House,  
52a Egerton Road,  
Bishopston, BS7 8DT



[www.horfielddentalcare.co.uk](http://www.horfielddentalcare.co.uk)

0117 951 3026

**Come and join us!**  
**New patient  
examinations  
including x-rays  
£37.50\***

(Normally £50)

\*Offer valid until 30/06/17

Advanced Cosmetic | Implant  
General & Restorative Dentistry

**Book  
Online**



**Horfield**  
dentalcare

525 Gloucester Road, BS7 8UG

## The final Bishopston, Cotham & Redland Neighbourhood Forum – As we know it! Can you help give this community group a future?



With the closing down of Neighbourhood Partnership structures it was no surprise that the BCRNP forum – possibly

the last – should be packed out this March.

**Police News** – Sue Mountstevens, Bristol's elected Police and Crime Commissioner for Avon and Somerset opened the forum expressing that community links remained high on the list of priorities. It was also reassuring to hear from local beat managers that overall crime in BS7 and BS6 was down on last year.

**A new sheriff is in town** – David Rockell is the new Beat Manager for Bishopston. Please say hello to him if you see him!

**New – Close Pass Scheme** – a new safety awareness scheme to protect cyclists and inform drivers is now in action in Bristol. See more on [www.bishopstonmatters.co.uk](http://www.bishopstonmatters.co.uk)

**Art Banners Gloucester Road** – These colourful art banners should be displaying up Gloucester Road, this June. To help with deciding which art banners will be chosen, you are invited to visit **Facebook – GloucesterRdArtBanners** – just click 'like' on your favourites.

**Cheltenham Road Library is on the move** – books and furniture are making their way up Gloucester Road to the soon to open Bishopston Library. We can't wait!

**Our Parks - community centres with out a roof** – The Bristol Parks Forum is welcoming volunteers to help maintain our parks. So if you enjoy gardening, fresh air, and meeting new people please do get in touch to see how you can be involved – [www.bristolparksforum.org.uk](http://www.bristolparksforum.org.uk)

**What's next for the BCRNP** – The organisers are dedicated to finding ways on how to continue to represent our community – this will likely rely on volunteers. Ideas given by YOU are being explored and will be debated this June, when they hope to hold a public independent forum. Stay updated and visit [www.bcrnp.org.uk](http://www.bcrnp.org.uk)

**Kelvin Players Theatre Company**

*The Beaux' Stratagem*

a comedy by George Farquhar

Tues 25 – Sat 29 April 2017, 7.30 pm

Tickets £12 (£10 concess, see website)

boxoffice@kelvinplayers.co.uk or 0117 924 0899 [www.kelvinplayers.co.uk](http://www.kelvinplayers.co.uk)

### THE BEAUX' STRATAGEM a comedy by George Farquhar

*"Instead of riveting your eyes to beauty,  
try to fix 'em upon a fortune"*

18th century Lichfield: Two nearly broke young men arrive with a plot to con wealthy women and recoup money lost living it up in London.

To impress the ladies, Aimwell pretends to be a lord and Archer his servant. Coincidentally, Lady Bountiful's daughter and daughter in law are desperately seeking eligible men; one to seek happiness in marriage and the other to seek happiness by escaping from an unhappy marriage. Dissemblers deceive, money is stolen, a father tries to corrupt his own daughter, highwaymen plot robbery...

**Kelvin Studio**  
253b Gloucester Road  
Bristol BS7 8NY  
Licensed bar available



## niche PRINT

### Printing at Niche

Tucked away upstairs, and often to people's surprise, there is a whole other department that specialises in print and art reproduction.

Niche has developed and expanded its print department over the last 8 years; it now produces exceptional prints on a daily basis and has become an integral part of the business. The harmonious marriage between framing and printing just couldn't be ignored.

Recognising the area of Stokes Croft has its share of go to litho printers, Niche thought it wise to hone in on what tied into their brand best, focusing more on quality rather than quantity. Their 'niche' area within this market is fine art and photographic printing and they have worked hard to build up a strong portfolio of Bristol artists, photographers, designers, etc.

You can select from a wide range of papers to suit your needs; watercolour papers such as Somerset, Hahnemuhle papers are ideal for both art and photography printing, along with a range of photo papers and canvas.

People return time and time again as they know they can rely on both the team and the quality products produced. Niche is proud of the exceptional service it offers in this area. The specialised team of four working upstairs – Rupert, Tim, Katy and Karnn will be pleased to welcome anyone into the studio to discuss any project – from delivering a collection for exhibition, to having a treasured old photo restored and printed for your family, do get in touch and make your prints happen!

### Printing services Niche can provide:

- High quality fine art and photographic printing
- Artwork scanning and reproduction
- Limited edition print runs
- Wide range of papers and media to choose from
- Canvas printing and stretching
- Blockprinting
- Foamcore, Foamex and Dibond mounting
- Scanning and digital restoration of old photos and memorabilia
- Large format poster printing
- Pack & post for mail order customers.

**CREATE  
PRINT  
FRAME**

**niche**

open: Mon to Thurs 9 - 5.30  
Fri 9 - 6.30pm, Sat 9 - 5.30



26 Stokes Croft, BS1 3QD  
t: 0117 942 2213  
[nicheframes.co.uk](http://nicheframes.co.uk)



## Spring News at Roxford's Pet Shop

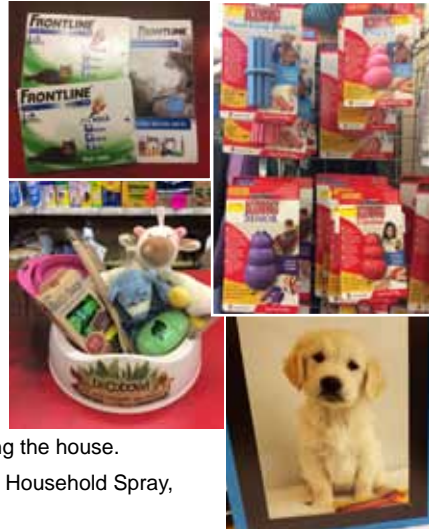
Open 7 days a week • Free local delivery

**King of toys – Kong!** When shopping for a gift for my friend's puppy recently (a very cute Jackapoo called Bertie), my first choice was a Kong Puppy. The Kong products have always been such a hit with Monty dog, keeping him amused for long periods of time. The classic Kong, ball, dental stick and jumbler come not only in a range sizes from x-small to x-large but the material they are made in also varies, depending on what age or breed of dog the toy is required for. Colour-coded, blue or pink is a softer rubber for young pups, red is normal, black is super tough for extreme jaws and purple for older dogs. Kong also produces 'Easy Treat' a food paste treat, that can be squirted inside the toys to keep the doggies interested and entertained, an ideal toy to offer when you are leaving the house.

**NEW to store!** Frontline Flea Treatment for Cats, along with their Household Spray, which effectively keeps fleas and ticks at bay for the whole year!

**Eco-friendly toys & pet accessories –** Roxford's carries a great selection of Beco products, for a wide range of pets. Their feed bowls are made out of bamboo and rice husks, making them both sustainable and biodegradable (but they are still tough enough to go into the dishwasher!). Other products include feed spoons, funky bag dispensers and collapsible bowls – perfect for when you are on the move. The organic, pet toy collection – Fido – is also an environmentally friendly range.

**Magic Puppy!** Local resident Sally fundraised with her guide dog Julie, to raise a staggering £5000.00 to sponsor a new assisted dog. Hitting this target meant Sally was able to name the gorgeous pup above 'Magic'.



155 Gloucester Rd, BS7 8BA • Tel: 0117 924 8397 • roxfordsthepetshop.co.uk

**COMPANIONS HAVEN**  
PET CREMATORIUM

For when the time comes to say goodbye.....

Companions Haven is a family run pet crematorium, specialising in individual cremation for over 20 years. Set in beautiful grounds between Bristol and Bath in the village of Pucklechurch.

200 Westerleigh Road  
Pucklechurch Bristol BS16 9PY

**Tel: 0117 937 4554**

[www.companionshaven.co.uk](http://www.companionshaven.co.uk)  
[info@companionshaven.co.uk](mailto:info@companionshaven.co.uk)

**Bristol Landscaping Services**

**Garden Design & Construction**

**Patios • Decking • Fencing**  
**Driveways • Turfing • Edging**  
**Planting • Ponds • Hedge Trimming**

**T: 0773 447 6145**  
[enquiries@bristollandscapingservices.co.uk](mailto:enquiries@bristollandscapingservices.co.uk)  
[www.bristollandscapingservices.co.uk](http://www.bristollandscapingservices.co.uk)

## Cc Motor Co. Your Local Garage

Set in the heart of Bishopston, Cc Motor Company is located on Brookfield Avenue (between CJ Hole and the Bristol Flyer). I recently met with Tony and Shaun, members of the friendly, professional team, who are delighted to be working hard for local people and are dedicated to offering the very best customer service.

Shaun told me, "We are proud to be an independent, local garage. Our experienced team offers quality work at affordable prices, and we pride ourselves in our honesty and reliability."

The garage is well equipped to carry out MOTs, car repairs, vehicle servicing, tyre fitting, welding, air conditioning repairs and engine management. Why not get in touch for a no obligation quote.

**Collection and Delivery Service –** Doing all they can to assist their customers in making car repairs as hassle free as possible, by prior arrangement, Cc Motor Co. will collect your car from your local home and deliver it back on completion of work – brilliant!

**Courtesy Car –** A courtesy car is available (by prior arrangement) if you can't be without a vehicle whilst repairs are taking place.

**READER OFFER! CC Motor Co. are generously offering readers a 10% discount** (excluding MOTs) until 30 April 2017, simply quote CC004.

So, don't delay, get in touch to book in today!

Tony told me, "We take great satisfaction in doing a good job for our clients. Our location just off Gloucester Road, among fellow independents is perfect for us. We enjoy supporting local people and businesses and hope they will support us too."

**Cc Motor Co. Brookfield Avenue, BS7 8BP • Tel: 0117 942 1130**



**Cc Motor Co.**  
Repairs & Servicing

- MOTs
- Car repairs
- Vehicle servicing
- Tyre fitting
- Welding
- Air conditioning repairs
- Engine management

We are delighted to be open for business as your Local Garage and pride ourselves on our honesty, reliability and experience. Working just off Gloucester Road in Brookfield Avenue, behind C J Hole and the Bristol Flyer.

**Exclusive Reader Offer 10% discount**  
(excluding MOTs) until 30 April 2017, simply quote **CC004** when you call.

**Telephone**  
**0117 942 1130**

Brookfield Avenue, BS7 8BP

## My first experience with Kinesiology

Over the years I have been producing Bishopston Matters I have had the pleasure of experiencing many holistic therapies, all with merit, Kinesiology, however was something quite new – and wonderful.

Kinesiology was originally developed by an American chiropractor called George Goodheart and can be seen as a blend of the principles of Traditional Chinese Medicine and western techniques.

I had my first session with local resident Kat Allen (pictured right), from her calming Bishopston treatment room. As with many therapies, you start by answering some questions on your health, diet, sleep patterns... Kat explained Kinesiology is a holistic treatment addressing both mental and physical pain and imbalances. It works on the basis of testing muscle response, this enables the practitioner to get a picture of what is happening in your meridian system.

Next, I was asked to lie down on the treatment couch (fully dressed) and Kat embarked on a series of muscle tests. The process was not painful, I was simply asked to resist when Kat applied pressure to move parts of my body, some of the areas I could put up good resistance and others my body was powerless when equal pressure was applied. Each muscle test is connected to different internal organs or muscles elsewhere in the body. Kat worked systematically noting down my responses and priorities to be addressed. At the start of the consultation I had mentioned my neck and shoulders often get sore with hours at the lap top and lower back – with carrying Henry. What however she discovered went far deeper than this and Kat pin pointed both physical and emotional concerns that I had not verbally shared with her.

Specific manipulation was applied to different areas of the body where needed and then the muscles re-tested to see if this had re-balanced things. There

were aspects of the session that reminded me of both Acupuncture and Bowen. For me what was completely new was when Kat looked up some natural tonics and supplements that may assist the healing of my specific problems. They were gently laid at the base of my throat, there were supplements that made my resistance, that had once been weak – resolute, I was amazed!

Kat was calm, reassuring and thoughtful throughout the session. She herself came to Kinesiology some years back when she endured a period of ill health. Not satisfied with simply popping pills as a fix, she turned to the holistic Kinesiology and has never looked back.

I must say I found the whole process fascinating and was lifted by the experience. I look forward to returning in a few weeks time.

If you would like to improve your health and well being (Kinesiology works as a great preventative therapy as well as dealing with existing problems) then please do get in touch with Kat

**Tel: 07855 193 297 • FB. katkinesiology**

*"Kinesiology is a non-invasive complementary therapy. I muscle test to find imbalances in the body and correct these imbalances using structural, emotional, energetical and nutritional techniques and offering advice."*

Katherine Allen



## Get sunglass ready with our multi-pair lens offer!

**We've teamed up with Essilor, the world leader in prescription lenses, to bring you a fantastic offer.**

Our multi-pair lens offer\* entitles you to two pairs of prescription lenses but you only pay for your first pair. The second pair of lenses is free! And, if you prefer to upgrade the lenses in your second pair of specs, there's still a great offer to be had. We'll give you 50% off your second pair of lenses.

**Protect your eyes** – Transition and polarising lenses are available as part of the offer. So, now you can enjoy getting out and about this spring safe in the knowledge that your eyes are protected from harmful UV rays.

**Transitions that express you** – Transition lenses constantly and smoothly adapt to your surrounding light conditions allowing you to see well in all light conditions. And, no matter which frame style you choose, we can fit a transition lens. Choose your colour, from grey, brown and graphite green lenses.

**Polarising lenses** – Xperio polarising lenses eliminate glare, enhance colour and contrast, whilst protecting your eyes from damaging UV rays. Lenses have an Eye-Sun Protection Factor of 50+, which means they give your eyes 50 times more protection than wearing no lenses. They're available in brown, grey and grey-green and are ideal for driving, sport, other outdoor activities and for people with light sensitivity.

**Find your own personal style** – As well as our great multi-lens offer, the 2017 Lynne Fernandes Collection includes the best in designer eyewear from around the world. Whatever your style there's a frame to suit your look and your lenses! Choose from the timeless beauty of LINDBERG, bespoke crafted TD Tom Davies, Ray-Ban, the face of cool for over seventy years, authentic Bloomdale and more!

**To take advantage of our multi-pair lens offer simply book your eye appointment at [www.lynnfernandes.co.uk](http://www.lynnfernandes.co.uk) call 0117 942 6843, email [bristolgr@lynnfernandes.co.uk](mailto:bristolgr@lynnfernandes.co.uk) or pop in to see us.**

\*Terms & conditions apply. Ask in-store for details.



*What do you want your glasses to say about you?*

Find your own personal style in the Lynne Fernandes 2017 collection.

Your lenses help you to see others;  
Your frames help others to see you!

**LynneFernandes**  
— The Collection

75 Gloucester Road | Bishopston | Bristol | BS7 8AS  
0117 9426843 | [bristolgr@lynnfernandes.co.uk](mailto:bristolgr@lynnfernandes.co.uk)

**Rebecca Ramsden**  
Editorial Services

**Refining your written message**

- websites • leaflets/posters • letters/reports
- theses/dissertations

**Don't let a typo cost you business**

Contact me to find out more about the proofreading and editing services I can offer your business.

\*Based in Horfield, Bristol\*

**07967 273595 [rebeccamramsdn@gmail.com](mailto:rebeccamramsdn@gmail.com)**

**Wed the Strings**

*Guitar and Cello Duo*

With many years experience of providing Background Music to add Class and Ambience to any occasion  
Contact no: 07714949930 [www.wedthestrings.co.uk](http://www.wedthestrings.co.uk)

# News from Friends of Horfield Common

Spring 2017 has got off to a very positive start for FoHC. We have a number of new volunteers who have joined our committee to help to run the group and develop our work, and have received confirmation that two funding applications have been successful! Thank you very much to all of our volunteers for their incredible work and commitment; in a context in which decreased amounts of funding for community projects is available, this is a great boost for the group and will enable us to continue to support improvements to the common for the benefit of all park users – thank you!

**New Accessible pathway** – We were delighted to receive confirmation from Tesco's Bags of Help Scheme that our application for funding to install the new, accessible pathway across the common



has been successful, following a public vote held in local stores in late 2016. Thank you very much to everyone who contributed their blue tokens to vote for the project!

The path has consistently been the most requested improvement from parks users (after the children's play area near the Ardagh, which was finally refurbished in 2014) since FoHC was established in 2006. The requests have been for three main reasons:

1. To enable all to walk a circuit of the common without needing to go too near to Kellaway Avenue (particularly requested by families with young children and dog walkers);
2. To enable people with limited mobility to be able to access the common during the winter when it can be boggy and wet for months at a time; for those in wheelchairs and/or using mobility scooters, this means large areas of the common being inaccessible, and;
3. To enable the hundreds of people who walk across the common every day to access the shops and bus services that run from Kellaway Avenue to use this route year-round without ending up covered in mud and/or having to walk out of their way to avoid the boggy grassed areas.

If you would like to know more about the proposal, please see our website at <http://bit.ly/2eHUe3F>



**New Garden Room/Meeting Space** – We are thrilled to have secured funding for a new garden room and meeting space, which will replace the existing café container space at the Ardagh in early May. Cory Environmental Trust has awarded us £31,000 for a new garden room/meeting space, which will enable our volunteers to increase the amount of time they spend on the common – meeting, planning and engaging in practical work party activities to enhance the park.

Our existing container, which was refurbished last winter, will be auctioned to raise funds for our work, and we have already received a few bids from local residents, who are keen to secure it for their own

garden-office spaces! It has served us very well but is limited in size and is not fully accessible. We strive to ensure that all of our work and activities are inclusive and available to all. The new garden room will provide a light, bright, fully accessible meeting space and café 'lounge' area – we can't wait to welcome you to it through the summer – do pop in and let us know what you think!

**The Café on the Common** will be reopening on Fri/Sat/Sun from 1 April and will be open from 10am–4pm (weather permitting!). Sara and her brilliant team will be back and can't wait to get started for the 2017 season.

**NEW Regular Volunteering Sessions** All are welcome and we are keen to encourage new volunteers to come join us and get involved.

**First Fridays Gardening Club** Join us for planting, planning and working on the Ardagh garden and projects across the wider common. Forthcoming monthly meetings, 10am – 3pm, 7 April, 5 May and 2 June 2017.

**Tidy Team Sundays** Join the monthly work party on the common to help keep things tidy, spruced up and looking lovely! Wear gloves, sturdy shoes and come dressed for the weather! Forthcoming monthly meetings, 2–4pm, 30 April, 28 May and 25 June.

**FREE Wild Play** Avon Wildlife Trust is back on the common for Wild Play every Thursday from 1–2.30pm during term-time. Sessions are for 2–4



year olds, free to attend and all are welcome!

**The amazing APE Project** are back on Horfield Common with their mobile adventure playground for outdoor play! Free play activities for young people take place on Thursday 5 April, 3.30 – 5.30pm with a half-term play day on 12 April, 12 – 4pm! Come join in – all welcome!

**Easter Egg Hunt!** Join the Ardagh Toddlers for this excellent event on Saturday 8 April, 10–12.30. Find all the chicks and claim your Easter Bunny! £2 entry. Tea, coffee and cakes, meeting at the Ardagh Bowling Club. The whole family is welcome.

**Visit:** [friendsofhorfieldcommon.com](http://friendsofhorfieldcommon.com)

**Tel:** 07592 422 706

## Bespoke playhouses and climbing frames




Designed with you to suit your space and your family, and built to last.



**Call Alex for a free consultation on 07779 606 934**

[www.littlehousebristol.co.uk](http://www.littlehousebristol.co.uk)

[facebook.com/littlehousebristol](https://facebook.com/littlehousebristol)



## CLIMBING PARTIES

at Undercover Rock, St. Werburghs

Climbing Parties at Undercover Rock and the ultimate birthday adventure for kids of all ages.

Unforgettable and unique, these parties cost just £99 for up to 9 children, making them a fantastic birthday treat for your children and their friends.

Visit our website below to find out more or to book a date now!

[www.undercover-rock.com/kids/all-the-family/birthday-parties](http://www.undercover-rock.com/kids/all-the-family/birthday-parties)

## Local History Matters

### Rights-of-Way: Footpaths

BHA local history research – text by Denis Wright ©  
Photos Andy Buchan ©

John Tucker and Young Sturge surveyed and valued Horfield parish in 1841 as part of a national programme for the commutation of tithes. In the same year, Tucker advised the tenant of Horfield Court Farm on the suitability of two fields called Conygre for house building. Tucker wrote:

*The East Conygre has two public footpaths across it, one diagonally from corner to corner and the other along the south side, which interferes to some extent with a regular plan for building, [and West Conygre being] too far in the background to afford any chance of immediate building.*

Tucker's advice seems to have been taken. Elton Terrace was built alongside Gloucester Road during the 1840s and there were still no buildings on the remaining parts of Conygre fields at the publication of OS 1881. Rights-of-way clearly had some effect on regulating land owners even in the early-19th century. Horfield manor court dealt with all matters touching on rights-of-way in the parish, as in a presentment of October 1801.

*The Jury aforesaid present that a Path or right of Way lying through a Piece of Ground called Long Mead in the Occupation of James Higgs is obstructed.*

*It is ordered that the same may be opened and a Convenient Stile put up.*

The implication was that Higgs as occupier would usually bear the cost but the passive voice ('is obstructed') suggests that the court may have been sympathetic to his case and would listen to what he had to say.

The court may also have had an interest in improvements in agriculture, not least because small fortunes had been made from supplies during the French wars. A presentment of October 1814 seems to have been praising a 'newly erected Cow house' in a newly designed Barton, which required a new line of footpath rather than a defence of something customary.



Churchways Avenue running up from Gloucester Road to Horfield Parish Church, Purdown in the distance

*It is ordered by this Court that the Footpath leading through the Home Mead of the Messuage now occupied by Henry Hewlett be turned from its antient course and in future pass behind the newly erected Cowhouse in the said Close terminating on the north at the old stile and passing through the gate of his Barton next the pond or through a hatch to be erected by the said Henry Hewlett for that purpose.*

Despite Hewlett's apparent success, his business like many others failed after the war and he was declared bankrupt in 1817.

Rights-of-way were also linked with customary practices which had little to do with agriculture, as in October 1799:

*The said Jurors present that a Path or Churchway lying through a piece of Ground called Churchways being part of a Copyhold Estate belonging to*

*Mr John Usher has been obstructed and stopped up and do order the same be forthwith opened and a Path made and Stile put up in the place where the former stile stood.*

Henry Hewlett's footpath was said to follow an 'antient course' and it seems likely that John Usher's 'Path or Churchways' was at least as old as the places it linked: the parish church and the hamlet of Horfield Downend. Footpaths were too small to merit a name, Churchways being an exception because it served a specific function. Tyne Path, the diagonal line across East Conygre, was never anything but a footpath, albeit with decorative stone walling and flagstones.



Tyne Path – running up from Elton Road to Tyne Road



## ABBEEFIELD HOUSE, REDLAND

### A Wonderful Option for your Retirement

Many of us want to stay in our own homes as we get older, but sometimes it can become too stressful; not

just sorting the admin, insurance and bills, but also the physical side – struggling to maintain a property or to keep the garden under control.

Renting an apartment in Abbeyfield House gives you the perfect blend of independence, support, privacy and companionship. It's a wonderful alternative when you want to move nearer your family, or are just struggling to cope on your own but don't need a 'care home' or 'residential care'.

**The all-inclusive fees cover delicious home-cooked meals, utility bills, Council Tax and TV licence, leaving you free to enjoy the community inside, and out.**

Residents have the freedom to come and go, enjoying a thriving local community, great bus routes to the city centre and Cribbs Causeway, and the beautiful Clifton downs on the doorstep. What's more, your loved-ones can relax too, knowing there's an Abbeyfield team member on-hand 7 days a week, 24 hours a day.



#### Abbeyfield House, Redland

- 17 one bedroom and studio en-suite apartments with kitchenettes
- 24-hour team member on hand
- Rent inclusive of all utilities, Council Tax and meals
- Delicious, home-cooked meals every day
- Communal dining in fabulous garden room
- Handyman
- Lovely landscaped garden with summerhouse
- Varied calendar of events and outings
- A lovely community inside the house

#### The Next Best Thing to Living in your own Home

- Abbeyfield House is not a 'care home' and does not offer 'residential care'
- Residents are independent and free to come and go, but enjoy the reassurance of having a team member on hand
- Friendly, happy community inside the house
- You can relax in the privacy of your own apartment and enjoy company at mealtimes
- Supportive environment with team members on hand to help and advise



GREAT  
NEW  
WEBSITE



For further information  
please get in touch via

0117 973 6997

[www.abbeyfield-bristol.co.uk](http://www.abbeyfield-bristol.co.uk)

# Archfield House Nursery

Established  
1986

'Love, Laughter and Learning!'



We offer care for children aged 0 to 5.

Our opening hours are 7am - 6:30pm.

Find out more information about us at

[www.archfieldhousenursery.co.uk](http://www.archfieldhousenursery.co.uk)

We would love to show you around so please call

0117 942 2120.

or email [office@archfieldhousenursery.co.uk](mailto:office@archfieldhousenursery.co.uk)

2 & 4 Archfield Road, Cotham, Bristol, BS6 6BE.

## Humpty Dumpty... had a great show!

The Bartholomites share  
with us an account of their  
2017 panto...


*We had a fantastic time once again, overcoming many hiccups along the way this year. A few key members of the group stepped down after the 2016 show for a well-deserved break, namely our pianist and some of our technical crew.*



*The hunt for a pianist was a challenge and indeed a variety of people ended up helping us out at practices but were unable to play for the actual show. Three weeks before the panto we found Simon (Pianist no. 7) who gelled with the group straight away; we were really blessed to find him – rumour has it he even wants to come back next year!*

*Our new director did a fabulous job, never appearing to be stressed. Everything seemed to click at our dress rehearsal, better late than never! We had lights, music and action!*

*The cast of 45 (only 13 of which are adults) were on top form and our children's chorus was particularly great. We have tremendous support from the local community and played to houses of well over 100 each night.*



**Graham Sothcott**  
**Guitar/Ukulele Tutor**

Electric, Acoustic, Bass, Ukulele

One-to-one tuition from  
his local Studio

Preparation for Grades. Music theory.

Tel: 0771 4949 930  
[graham.sothcott@dsl.pipex.com](mailto:graham.sothcott@dsl.pipex.com)

Member of the  
Registry of Guitar Tutors

## I MY PC

Computer Sales & Repairs

- ♥ PC & Laptop Repair Services
- ♥ New PCs, Laptops & Tablets
- ♥ Refurbished PCs & Laptops
- ♥ PC Hardware & Peripherals
- ♥ Custom Built PCs
- ♥ FREE Counter Service

10% Student Discount on Services



Refurbished  
Laptops & PCs  
From Only  
**£99.99**



BullGuard  
Internet  
Security  
From Only  
**£24.99**

207 Gloucester Road, Bishopston, Bristol, BS7 8NN

Student Discount only available with valid student card. Prices include VAT.

0117 9248755  
Mon-Sat, 9am-6pm  
[www.i-love-my-pc.com](http://www.i-love-my-pc.com)

We now stock a range  
of compatible ink  
cartridges for

**Hewlett Packard  
Canon & Epson**




25% Discount  
off all cartridges  
with this advert.

Find us on Facebook 

# BROOKFIELD GARAGES



## SERVICES:

140 Ashley Down Road  
Horfield, Bristol BS7 9JS

Tel: 0117 951 2285

Fax: 0117 3360 155

**Independent Ford Specialist but any make or model are welcome for our expert car servicing and repairs.**

**Our car mechanics provide a range of services, including:** Car service & repair

- MOT testing • Brakes checked & replaced • Clutch repair • Exhausts
- Tyres checked & fitted • Engine management repair



## SALES:

32 Filton Road  
Horfield, Bristol BS7 0PA

Tel: 0117 239 5018

Quality used cars can be purchased from our showroom on Filton Road.

You will receive the same friendly, knowledgeable service across both sites.

## Vehicle Safety & Security

You can purchase a range of security items from Brookfield to include – In Car Cameras, GPS Tracking systems and Parking Aids.



## Brookfield Mobility Solutions

Brookfield now offers vehicle adaptations: they can fit hand controls, steering balls, hoists... Get in touch to find out more.

Visit our website for more information [www.brookfield-garages.co.uk](http://www.brookfield-garages.co.uk)

## Create more space for you with Gardens Rooms

At Secret Garden we now enjoy creating garden rooms as part of our complete garden design and landscaping service.

With more people working from home or not wanting to move but needing to create more space, these outdoor rooms are proving to be extremely popular.

There are a range of materials the rooms can be created in; we would draft up some designs for you after meeting to see what you would like to get out of this new space. We will create a structure that will compliment both your garden and lifestyle.

Some of our clients have taken the opportunity to give their whole outdoor space a makeover.

There are many possibilities! We have found this new line an exciting extension of the services we offer and the client feedback on projects we have delivered has been brilliant.

If you would like to find out more about garden rooms or any other garden project, please do get in touch with us.

*Ali*

For any more information and advice check out – [www.secretgardenweb.co.uk](http://www.secretgardenweb.co.uk) or email – [info@secretgardenweb.co.uk](mailto:info@secretgardenweb.co.uk)



39 Horley Road, St Werburghs, Bristol

**Creative Design  
Hard & Soft Landscaping  
Maintenance & Clearance  
Hedges & Trees**

0117 9092 088 or 0777 9180 855  
[info@secretgardenweb.co.uk](mailto:info@secretgardenweb.co.uk)  
[www.secretgardenweb.co.uk](http://www.secretgardenweb.co.uk)

## ALL GARDENS

TO ALL  
PEOPLE

**SMALL GARDEN SPECIALISTS**

**25 YEARS EXPERIENCE  
BASED IN BISHOPSTON**

**Phone Pete 0117 9421 685**

**e-mail peter@allgardens.co.uk**

**visit www.allgardens.co.uk**

**All Garden Craft DESIGN**

- Garden Clearance and maintenance
- Garden make-overs
- New Lawns
- Fences/stone walls
- Patios & Decking
- Ponds
- Tree pruning



### Bishop Road Receives a £500 award for their new Green Space

Bishop Road Primary School has been awarded a £350 Wessex Watermark to help create a new green space at its urban site in Bishopston. Sue Goodland, Wessex Water's Education Officer, recently handed over the cheque at the field where the trees will be planted.

Bishop Road Primary School is creating a nature garden, allotment, orchard and wildflower area to make open-air learning spaces for its 800 pupils. The school is the largest primary school in Bristol and firmly believes the children will benefit from learning about the connection between food and their natural environment.

*"We are creating an allotment classroom for each year group to cultivate" Joe Emissah, the school's deputy Head said. "There will also be a small orchard of native, locally-sourced fruit trees and a wildflower area to attract insects and help pollinate the orchard. In fact the garden and green spaces has been such a success that the school is planning to incorporate it into its curriculum as an outdoor learning classroom. Our Wessex Watermark Award will help us buy more trees both native fruit trees for our orchard and native hedgerow trees. Our Award will enable the school to buy some larger saplings so the children can see the trees maturing sooner rather than later."*

The Watermark Award provides funds for environmental projects within the Wessex Water area. Now in its twenty third year, it has supported over 900 environmental initiatives. Organised by The Conservation Foundation, all projects are judged by a panel chaired by its President – David Bellamy.

## News from Fairfield High

**We are delighted and proud to be one of the most oversubscribed schools in Bristol!**

Fairfield High School has had a record 446 applications for places for 2017. It means the secondary school in Horfield is oversubscribed for a third successive year. All 216 places have been offered to prospective students. Details of waiting lists and how to appeal can be found on the Bristol City Council website.

Fairfield is an 11–16 school that serves a diverse inner-city community. It is rated by Ofsted as Good with Outstanding features. The school is part of the Excalibur Academies Trust, which provides a strong support network.

Head of School Nick Lewis said: *"It is fantastic that Fairfield High School is now one of the most oversubscribed schools in Bristol. This is an*

*amazing testament to the hard work and dedication of FHS staff, students and parents. It shows that our community really values the work that everyone does in school and in the wider area."*

### Celebrating World Book Day

Fairfield High School (FHS) hosted a whole range of activities to celebrate World Book Day with photo booths, cake sales, competitions, dressing up, lost word hunts and book challenges; and all with a common theme in mind – a celebration of reading.

A number of students and staff took part – FHS is particularly proud of its Assistant Vice Principal, Ben Spence, whose photo (top right) made it onto the Guardian's website!



*Head of School Nick Lewis takes a magical approach*



## LEE'S CARPETS

EST. 1957

A family run business serving Bristol for 50 years. Extensive range of carpets, laminate & vinyl flooring. Our own team of carpet fitters are on hand to professionally supply and fit your new flooring.

**Tel: 0117 951 4262**

5 Muller Road, Horfield, Bristol, BS7 0AB  
Open Mon - Sat 9am - 5pm, Sun Closed

# News from our Ashley, Bishopston & Redland Councillors

## Ashley ward news

The council's annual budget was passed in February, and the measures in the budget involve changes to a number of council services.

One of these is Neighbourhood Partnerships (NPs), which will have the majority of their budget removed. Consultation has begun between Council officers, councillors and local communities about how NPs are to continue in what the council hopes will be a 'community-led' format. At last month's meeting of the Ashley, Easton and Lawrence Hill NP there was a discussion about the process and timescale for moving forward, and there will be further meetings to explore these issues before the end of June.

The community-led neighbourhood organisations that emerge out of NPs will still receive support from the council. All areas will receive a budget in order for regular meetings to be held throughout the year. These meetings can be used to discuss local issues, and, if applicable, for decisions to be made about spending Section 106 and Community Infrastructure Levy money (which comes from certain kinds of development schemes in the area when they are approved by the Local Planning Authority). In addition, a budget will be available for small grants to the community in the most deprived areas of the city.

There is also the question about what the boundaries of the community-led partnerships will be, which may not necessarily be the same as what they currently are for the NPs. It may be that Ashley, Easton and Lawrence Hill will not continue as one grouping. For example, it could potentially make sense for St Andrews to join together with Bishopston, Cotham and Redland's partnership area. As councillors, we want to support what will work best for our communities moving forward. If you'd like more information about these proposals and the consultation process (including future meeting dates), you can contact Gill Calloway at [gill.calloway@bristol.gov.uk](mailto:gill.calloway@bristol.gov.uk).

In other news, a meeting was held between Ashley and Redland councillors Mike, Jude and Martin and the council's Cabinet Member for Transport, Cllr Mark Bradshaw, regarding parking and highway safety issues in the streets on either side of Gloucester Road. Cllr Bradshaw agreed that the problems in the area warranted attention and further consultation with residents about what should happen next. We'll be able to provide more information about this in a future issue.

The council's Sustainable Transport team is currently planning and delivering schemes through the Cycle Ambition Fund, which aims to improve the network of walking and cycling routes across the city.

One of the routes they are looking at is from

The Arches to Southmead Hospital, and there are preliminary plans for improvements to the Zetland Road–Gloucester Road junction to make it safer for cyclists, which will be taking shape in the next few months.

Finally, we're aware that there are plans for a student accommodation development at 147–149 Gloucester Road (above and behind the Peacocks store). When the plans are uploaded to the council's planning portal we will be sure to look at them closely and discuss with planning officers any issues of concern.

### Please do get in touch

**Cllr Mike Davies, Labour Party**

[cllr.mike.davies@bristol.gov.uk](mailto:cllr.mike.davies@bristol.gov.uk) / 07584 370 413

**Cllr Jude English, Green Party**

[cllr.jude.english@bristol.gov.uk](mailto:cllr.jude.english@bristol.gov.uk) / 07584 151 099

**Cllr Carole Johnson, Labour Party**

[cllr.carole.johnson@bristol.gov.uk](mailto:cllr.carole.johnson@bristol.gov.uk) / 07584 370 414

## Redland ward news

**The new Bishopston Library** – Following the closure of the old Cheltenham Rd library at the end of February, we're pleased to report progress with our new Bishopston Library on Gloucester Rd.

Flooring is now complete and, at the time of writing, shelving and furniture that's been in storage is being installed, after many years of delay. The books will arrive shortly. There have been delays with data cables – essential connections for library services to start – so these are being chased. We hope this does not slow down opening in the month ahead.

While the library is due to be operating for the rest of this financial year, the recent council cuts mean it will be one of the many facilities that are subject to a consultation later this spring on a reduced library service for the city. While that's not good news, the important thing for now is to get a new Friends group up and running and for anyone interested in running classes or activities to get in touch with us – we want to see this thriving as a community facility. Contacts from the old library will be asked if they would like to stay involved. As well as the flexible library space at ground and first floor levels there's a small meeting room, a toilet, and a lift to make it fully accessible.

The rest of the new development below the flats is under review in the light of budget cuts and viability. The new strategy for public toilets after budget cuts is to find other facilities that can be offered to the public along high streets (the parks toilets are a separate service), which can mean more locations offering to serve as public conveniences that can be publicised with a local map (as has been done in Bedminster). There's a very small proposed retail unit and this may be revisited to see if a more viable space can

be offered. All the new buildings, including the flats above, are subject to a service charge.

**Parking** – There's continuing pressure from local residents both sides of Gloucester Rd for parking to be reviewed and managed better. Local councillors for both Ashley and Redland wards met with Cabinet member for Transport Mark Bradshaw recently. He has promised news within weeks of a definitive proposal that he has requested. It will be the basis for setting the test of support among residents and others like local businesses. It will inevitably require a high level of agreement among local people for anything to be developed. Once we know what this says we can progress work with residents where there might be requests for extensions or new parking schemes.

**Manor Park parking issues** – Following disquiet from residents about various aspects of the proposed extension to the Redland residents parking scheme to cover Manor Park and nearby roads, we held a site meeting in the street with officers. This was a lengthy, detailed, and respectful debate around the various issues that residents have brought up – by no means all agreeing with each other on the priorities for progressing, amending or rethinking the advanced proposals. Topics ranged over the parking restrictions, double yellow lines, times, and permit issues, plus things like bins on pavements, driveways, and signage, and a request for an alternative approach called a Parking Permit Area. We're now awaiting a report back from officers and a meeting to decide the best way forward. While we appreciate not all views can be satisfied in one plan, we have been promised a six-month review of what gets done.

**The last days of BCR NP** – We can't be too specific about the meeting on 16 March at time of writing, but there are plans for reports from the various working groups of the neighbourhood partnership, plus a space for plenty of debate about what people want to see taking its place to manage the neighbourhood in future. Please do get in touch with us as soon as possible if you'd like to be involved in shaping future plans for how our area gets managed in future, proposing practical projects you'd like to contribute to, and offering ideas for priorities in future.

**Keep Bristol Tidy efforts** – We were glad to take part in the recent Spring Clean efforts by the Streetscene group and Keep Bristol Tidy. Everyone can play a part in keeping streets free from litter, and reporting things like flytipping and tagging. Without the voluntary efforts of people locally things would rapidly deteriorate. Well done to all the volunteers tidying side streets near Gloucester Road, areas like Cotham Gardens and Redland Green! 50 sacks

of rubbish were collected across BS6/BS7 in one morning. But a brief ten minutes a day can make all the difference in a street and the Streetscene group can supply litter pickers and bags if you'll help where you live. Contact [info@bcnp.org.uk](mailto:info@bcnp.org.uk) with the subject streetscene to get involved.

### Please do get in touch

**Fi Hance, Green Party - Cabinet member**

[Cllr.fi.hance@bristol.gov.uk](mailto:Cllr.fi.hance@bristol.gov.uk) / Tel: 07833484346

**Martin Fodor, Green Party - Cllr.martin.fodor@bristol.gov.uk** / Tel 07884 726101

## Bishopston ward news

**Ashley Down Double Yellow Lines** – We have been told that Council officers are still analysing the feedback from the consultation on double yellow lines in the Ashley Down area. The results should be released in the next few months. Once we know the results and recommendations made we'll let local residents know.

### Bishopston Society Meeting on Air Pollution

See page 31 for details on this public meeting taking place on Tuesday 4 April, 7pm at the Cricket Club.

### Bristol North Baths and Bishopston Library

With the new build project at the Bristol North Baths nearing completion, we wanted to add our support to the call for those interested in a 'Friends of' group. Such groups make libraries all the more successful, and may be especially important for Bishopston Library to help either secure its future as a council-run library, or to keep it in community use if not.

**Neighbourhood Partnership** – With the imminent removal of funding, the Bishopston, Cotham and Redland Neighbourhood Partnership is considering alternatives for the future. We want to continue in some form but need help from residents to do so. Our next meeting, on a date to be confirmed, will be based around working out the details of what structure we want our future work to take. But please don't wait until the next meeting to get in touch! If you're interested in playing a part, big or small, in the future of community working across the area please let us know!

**St Andrews Bowling Club** – Congratulations to the St Andrews Bowling Club, who have secured a £50,000 grant from the Landfill Communities Fund for the refurbishment of their clubhouse. We're excited to see the results of the work, which will be completed next year.

### Please do get in touch!

**Tom Brook, Labour Party**

[Cllr.Tom.Brook@bristol.gov.uk](mailto:Cllr.Tom.Brook@bristol.gov.uk)

**Eleanor Combley, Green Party**

[Cllr.Eleanor.Combley@bristol.gov.uk](mailto:Cllr.Eleanor.Combley@bristol.gov.uk)

## Jon Drake Plastering Service

**A quality and reliable local plasterer for internal and external work.**

- Skimming
- Dry Lining
- Artex plastered over
- Rendering
- Fully Insured



Please ring Jon for a free quote with no obligation

**Tel 0117 979 0575  
or 07800 939 148**

[www.jondrakeplastering.co.uk](http://www.jondrakeplastering.co.uk)

## SOUTH GLOSS DECORATING Interior and Exterior

**Affordable, Reliable, Professional**

Please contact David

Tel: **0117 956 9932**

Mob: **07739 382 524**

Email: [davebeauchamp@msn.com](mailto:davebeauchamp@msn.com)

[www.facebook.com/southgloss](http://www.facebook.com/southgloss)



## COLLINS TREE SERVICES

Free quotes Fully insured

Pruning Hedge Trimming  
Felling Stump Grinding Planting

All work considered All waste recycled  
Friendly and professional service

**0752 591 6882 0117 965 8399**

[info@collinstreeservices.co.uk](mailto:info@collinstreeservices.co.uk)

## Space Decorators

**Established 1999**

### Professional Decorating Service Interior and Exterior

Private, modern and period or rental properties.

Competitive, reliable and honest service.

Whether you are looking to repaint your front door or redecorate/renovate your whole house, we guarantee a durable excellent finish using the best and most suitable products on the market.

Project management available involving all trades if required.

References available.

**Call Tom for advice or quote 07582 237 809**

## Electrical and Plumbing



**All electrical work** - from complete rewire to additional sockets

**Domestic plumbing and tiling** - showers, undertile heating etc.  
City & Guilds and NVQ. Part P compliant.

**Free estimates** - Call to discuss your requirements

**Matt. Pederick - 0117 9246886 or 07958 753588**



### High Quality Construction

Expand Building is a Bristol based building company with an excellent reputation. Delivering high quality construction.



Find out more

[www.expandbuilding.co.uk](http://www.expandbuilding.co.uk)

**0117 959 1777**

#### We specialise in:

- |              |                     |                                      |
|--------------|---------------------|--------------------------------------|
| ✓ Extensions | ✓ Home Improvements | ✓ Commercial Maintenance             |
| ✓ New Builds | ✓ Sub Contracting   | ✓ Commercial Interior Refurbishments |
|              | ✓ Insurance Work    | ✓ Renovations/Alterations            |

**07813 328 387 | 07972 577 827 | email: [info@expandbuilding.co.uk](mailto:info@expandbuilding.co.uk)**

Expand Building, 124 Falcondale Road, Westbury on Trym, Bristol BS9 3JD | Company Registration No. 7933161

## Home Improvement & Repairs

\*\*\*\*\* "Keep me by the phone" \*\*\*\*\*

**Small repair & maintenance jobs.**  
**Larger projects also done.**

**Kitchens - Bathrooms - Plumbing - Electrical - Roofing**  
**Painting & Decorating, Gardening Services etc.**  
Clean, tidy, trustworthy, experienced & reliable.  
Reasonable rates & references available.

Co-ordinated team of trades people... local, small  
& friendly!.....Call for a free estimate on:

**Phone: 0117 9830668**

**Mobile: 07966 291323**

**HOMEFIX [www.homefixweb.co.uk](http://www.homefixweb.co.uk)**

## KC Electrical Services

**All domestic work carried out -**

**Re-wires**

**Security alarms**

**Lighting sockets...**

**Call Kelly for a quotation on**

**07971 812213**

**Based at 122 North Rd, St Andrews**



288 Gloucester Road, Bristol, BS7 8PD

Office: 0117 909 3967

Email: info@watertiteplumbing.co.uk

Mobile: 07792 107396

Website: www.watertiteplumbing.co.uk

PLUMBING & GAS REPAIRS

INSTALLATION & SERVICES

LANDLORD SAFETY CERTIFICATES

CENTRAL HEATING, BOILERS, GAS FIRES

POWER FLUSHING, WATER HEATERS, COOKERS



## Changing Rooms?

### Painting & Decorating



- Large or small jobs
- Reliable efficient service
- No Obligation quotations
- References available if required
- No VAT charged



For more information contact: Alan Anstey  
Tel: 0117 9859256 Mobile: 07980 413355

## L Charnick Electrical Services

free quotations

re-wires  
additional sockets  
landlord reports  
inspection & testing

fuse-board upgrades  
fire alarm installation  
security alarms  
emergency call out  
serving Bristol & surrounding area



T 01179 557227 M 07967 563298

www.charnickelectrical.co.uk

## Stephen Carter Painter & Decorator Professional Decorating Services

Painting & Decorating Association  
Accredited (with PDA guarantee)

For a free competitive quotation:

07786 513788 or 0117 907 6997

Cranside Avenue, Redland BS6 7RA

www.carterdecorating.co.uk

## A&P Plastering Specialists

All aspects of plastering...

- Skimming over artex • Coving • Artexing
- Small jobs welcome • Plaster boarding
- Over 25 years of experience
- Clean and professional service

Contact - Philip Rogers

Tel: 0117 9425762 or 0775 9255438

Radnor Road, Bishopston

## JPK PLUMBING

From a dripping tap upwards

Reliable, qualified, fully insured

Phone: John Keegan

125 Bishop Road, Bishopston, BS7 8LX

elfontanero@hotmail.co.uk

www.jpkplumbingbristol.co.uk

07900 582 817 • 0117 924 7286

## THE AERIAL MAN (DAN GRACE) Local engineer



- Digital Aerials • Fully Guaranteed • Repairs
- Sky Work • Free Quotes • OAP Discounts
- Poor Reception Problems • Additional TV Points

0117 967 9028 | 07818 413 451

www.theaerialman.co.uk

## Redland Electrical Services

Additional Lighting / Sockets \* New Fuse Board  
\* Rewires \* Home Security \* Inspection & Testing

24hr call out service

ELECSA approved contractor

Part P Building Regulations approved 17th Edition BS7671



John Chambers

07734 326 915 / 0117 9246154

info@redlandelectricalservices.co.uk

www.redlandelectricalservices.co.uk

## BS7 BUILDING & CARPENTRY

Alcove shelving • Kitchen fitting  
Extensions • Loft conversions • Doors  
Windows • Floors/Decks • Skirting  
Plaster boarding • Architraves

For a free quote contact Scott Bayler:

scottbayler@gmail.com

07399 261663



## The Roofing Company

- Tiling & Slating
- Lead Work
- GRP Roofing Systems
- UPVC Fascias & Guttering
- Roof Carpentry

Free no obligation quotations  
Competitive Pricing

0117 950 2610

E-mail: roofingco@btconnect.com

Unit 1, 'Perrocot', Hallen Rd, Bristol, BS10 7RP



## JAMIE ERIKSSON Carpentry services

Fitted furniture with period detail  
Bespoke joinery and storage solutions  
General renovation and repairs  
Painting and decoration

No job too small

Free quote, friendly and efficient service

07783 904 842

jamieeriksson@hotmail.com

# Useful Trades & Services for the Home & Garden

**MD Aerials**  
Call Michael Dagger

Freeview – Freesat – Sky – DAB Aerials

Wall mounting LCD or Plasma televisions – setting up & tuning

mike@mdaerials.co.uk  
www.mdaerials.co.uk

T: 01454 418 341 - M: 07817 304 236

From a single tile to a whole roof, all build and roof works undertaken, pitched and flat.

**ROOF-TECH**  
Bristol

We have over 20 years experience are fully insured and all work is guaranteed.

For a FREE, no obligation quote and roof survey, just give us a call.

Office: **01454 615354** Mobiles: **Ben Peters: 07724 681620** or **Steve Coles: 07724 639830**  
E-mail: [roof-tech@hotmail.com](mailto:roof-tech@hotmail.com)

**renovate**  
building & maintenance

Extensions | Bedrooms | Loft Conversions  
Bathrooms | Kitchens | Gardens

T 0117 969 2740 M 07515 945 992  
E [info@renovatebm.co.uk](mailto:info@renovatebm.co.uk)  
[renovatebm.co.uk](http://renovatebm.co.uk)

**Advanced Decorations**  
**Peter McGahan**  
Painter & Decorator  
Interior & Exterior

Phone: **0117 9556198**  
Mob: **07805704901**  
[info@advanceddecorations.co.uk](mailto:info@advanceddecorations.co.uk)  
[www.advanceddecorations.co.uk](http://www.advanceddecorations.co.uk)

"Peter has done our decorating both inside and out, for the past 10 years to an unquestionably high standard" Mr and Mrs S. (Clifton)

"High quality work carried out efficiently without fuss or hassle" F.R. (Stoke Bishop)

No VAT added as sole trader

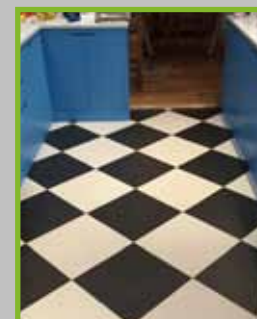


**Natural**  
BORN FLOORING



**01179 427829**  
Natural Born Flooring  
203 Gloucester Road  
Bristol, BS7 8NN  
Customer parking at the rear of the shop  
[www.naturalbornflooring.co.uk](http://www.naturalbornflooring.co.uk)

MARMOLEUM • KARNDEN • CARPETS & VINYL • COIR • WOOD & BAMBOO  
SISAL • RUBBER & LEATHER • CUSTOM RUGS & RUNNERS • SEAGRASS



Natural Born Flooring is an established family-run flooring specialist now in its fifth year on the famous Gloucester Road. Its modern showrooms feature all the major brands you would expect to find from a high-end flooring retailer.

The shop is split into three easy-to-navigate areas. As you enter the store you will be greeted by carpets rugs and runners, both of natural and man-made fibres. The rear showroom is dedicated to luxury vinyl tiles, perfect for all areas of the house and, with Amtico, Karndean, Distinctive, Polyflor and Harvey Maria, there is plenty of choice for the design-conscious.



Downstairs is all about real wood, parquet and engineered oak flooring and has the South West's only Bolefloor display floor, so you can see the live-edge technology in the flesh. Bespoke finishes are available on their solid block herringbone and wood plank oaks so you can really have a one-of-a-kind floor. With best selling ranges from Ted Todd, V4, Woodpecker, Love Floors and more, there is something to suit all tastes and budgets.

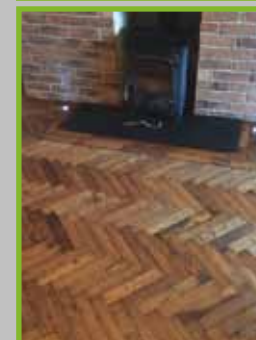
Natural Born Flooring's team has an enviable reputation for their knowledge in natural flooring – hence the name – and works all over the UK with

major brands, designers and natural flooring manufacturers, installing these tough materials to the highest possible standards.

The company's talented team have a combined experience of more than 50 years, with old methods being enhanced by the most up-to-date installation courses to create bespoke floors, which other companies simply cannot match.

Natural Born Flooring offers a gimmick-free service, focusing on exceptional quality installations, using only the highest standard of products at competitive prices all year round.

Call today for a free consultation on **01179 427829**  
[www.naturalbornflooring.co.uk](http://www.naturalbornflooring.co.uk) • 203 Gloucester Road, BS7 8NN  
Customer parking to the rear of the shop



# Price Glass

**WINDOWS • DOORS • CONSERVATORIES • EXTENSIONS • KITCHENS • BATHROOMS**

Incorporating P G & G Building Services

**Fensa registered Glass Experts • Glass installed with care**  
**10 year insurance backed guarantee on PVC Doors & Windows**  
**Established 1973**

- |                      |   |
|----------------------|---|
| GLASS CUT TO SIZE    | PVC, ALUMINIUM & HARDWOOD WINDOWS AND DOORS |
| SLIDING SASH WINDOWS |   |
| SECONDARY GLAZING    | BUILDING & INSTALLATION WORK                |
| CONSERVATORIES       | COLOURED SPLASHBACKS                        |
| BI-FOLDING DOORS     | LEADED LIGHTS                               |
| FRENCH & PATIO DOORS | REPLACEMENT/REPAIR SERVICE                  |

1st Class Product - 1st Class Workmanship - At An Affordable & Fair Price

Private & Commercial jobs undertaken

**Call - 0800 975 7967**

[www.priceglassbristol.co.uk](http://www.priceglassbristol.co.uk) • E-mail - [office@priceglassbristol.co.uk](mailto:office@priceglassbristol.co.uk)



Visit our  
showroom at  
**4-6 Ashley Down Rd**  
**Bristol, BS7 9JW**



## Useful Trades & Services for the Home & Garden

**jw presland**  
HEATING ENGINEER



Gas Boiler Service  
Maintenance  
Breakdowns  
Boiler Changes  
Full Systems Installed  
Power Flushing Service  
7 & 10 year manufacturers warranty on Vaillant boilers



214 Cranbrook Road  
Redland, Bristol, Bristol BS6 7QX  
Tel 0117 983 7442  
Mobile 07973 530959  
Email [info@johnpresland.co.uk](mailto:info@johnpresland.co.uk)  
Web [www.johnpresland.co.uk](http://www.johnpresland.co.uk)  
[www.checkatrade.com/JohnPresland](http://www.checkatrade.com/JohnPresland)



Over 15 years experience



- Gas Safe Registered
- Specialist Boiler Servicing, Repair and Installations
- Up to 10 year warranty on new Worcester boiler installations
- Accredited installers for Worcester and Vaillant

- Professional, fully qualified and experienced
- Complete Bathroom Installation
- Bathroom s
- Wet Room s
- All kind of Worcs
- Tiling and flooring

[www.allworksplumbingandheating.co.uk](http://www.allworksplumbingandheating.co.uk)  
[www.allworksbristoltd.co.uk](http://www.allworksbristoltd.co.uk)

Enquiries **0117 3048043**



### Traditional Fitted Furniture

- Bedroom wardrobes • Bookcases
- Glazed Cupboards • Home-Office



20 years experience. Hand built and made-to-measure furniture for an exact fit; practical, but designed with period details in the style of your home.

**Gareth Jones: 0117 9669446**  
[info@gljonesfurniture.co.uk](mailto:info@gljonesfurniture.co.uk)  
[www.gljonesfurniture.co.uk](http://www.gljonesfurniture.co.uk)



**Architectural services from initial ideas to completion**  
**Full support for:**  
**Planning Applications**  
**Building Regulations**  
**Design work for all types of projects: small, large, old, new, conversions, extensions, eco & listed buildings**  
**You are welcome to contact me for an informal chat**

**architect**  
**ron leemans**

10 Richmond Avenue, BRISTOL, BS6 5ET  
 Tel: (0117) 9247723 Mob: (07941 625 721)  
[email@ronleemans.co.uk](mailto:email@ronleemans.co.uk)

 **PEAR TREE**  
BUILDING &  
PLASTERING SERVICES



We are a family run business, based in Bishopston, who undertake all kinds of building work  
We strive to reduce waste, recycle materials and improve efficiency  
Lots of examples of our work and customer feedback can be found on our website  
[www.peartreeplastering.co.uk](http://www.peartreeplastering.co.uk)  
For an honest, free and friendly quote call Rich on:  
**07976 209 305 / 0117 9500 597**

## Inside and Out

### Painting & Decorating

#### Family Business



All work undertaken  
No job to small

Interior and Exterior work  
Floor and Wall Tiling  
Wood and Laminate Flooring  
Kitchen and Bathroom Refurbishment

All work Guaranteed • Call for a free quotation

**No VAT chargeable**  
**Rick Murphy**  
The price we say is the price you pay  
**No hidden extras**  
Supporting - Save the Children

**Tel: 01454 615 027 Mob: 07816 854978**  
[insideoutbristol@hotmail.com](mailto:insideoutbristol@hotmail.com)

## Roost Plumbing & Heating

All aspects of plumbing & heating including:

- Complete Bathroom Installations
- General Plumbing Maintenance & Repairs
- Full Central Heating Systems
- Boiler Replacements
- Boiler Servicing & Breakdowns
- Landlord Safety Certificates
- Power Flushing and System Restoration

All Workmanship Guaranteed  
Based in Horfield  
Please contact Paul for a friendly, no obligation quote.




**0117 230 3071**  
**07841 641423**  
[www.paulroostplumbing.co.uk](http://www.paulroostplumbing.co.uk)

## Jerry Baker

### Party Wall Surveyor

*Affordable, effective, reliable advice and services*

**07445 801 885**  
[jbakerbristol@gmail.com](mailto:jbakerbristol@gmail.com)

## Orchard Carpentry

### All Carpentry work undertaken

#### Friendly & Professional Service

Repairs to window frames, sills, doors, rotted timbers, sash cords. We also decorate, fit kitchens, tiling, decking, fire doors etc

NVQ qualified. Fast & efficient  
Competitive rates & free quotations.

**Over 20 years experience**  
Locally based with references available  
**Please contact Simon: 0786 781 3722**

## Brickwork

### by Denise Howard



**Decorative Brickwork**  
different colours, patterns, features and structures

**Bespoke Designs**  
in both reclaimed and new bricks

**Walls Restored and Rebuilt**  
including minor repairs and missing bricks

**Repointing**  
complete walls or small areas, including patios

**Locally based in Bishopston/Horfield**  
Liabilities Insurance held  
References available

City & Guilds Advanced Construction Award - Brickwork - Distinction


**t: 0117 9249166 or 07710 827467**  
**e: [brickworkbydenise@gmail.com](mailto:brickworkbydenise@gmail.com)**




## prime properties

BUILT ON TRUST

Our professional service has been created to make your home renovation project as seamless and stress-free as possible.



extensions | loft conversions | basement conversions

For more information, or to arrange a FREE no obligation quote, please get in touch today.

**0800 955 3123 / 0117 369 0060**  
[www.primepropertiesbristol.co.uk](http://www.primepropertiesbristol.co.uk)

## Paull Property Services

All aspects of property maintenance and refurbishment undertaken by a local, experienced professional



**Domestic & Commercial properties**

- Renovations**
- Decorating – inside & out**
- Fascias & Soffit boards**
- Plumbing**
- Small and Large projects**
- And much more – please just ask**

References & Testimonials available • Fully insured

**Contact**  
**M: 07866 066 971 T: 0117 9614 774**  
**E: [paullpropertyservices@googlemail.com](mailto:paullpropertyservices@googlemail.com)**

## M<sup>c</sup>CALL PLASTERING & ROOFING SERVICES

EST 1976

- ALL ASPECTS OF PLASTERING & ROOFING UNDERTAKEN
- OVER 30 YEARS EXPERIENCE
- INTERIOR & EXTERIOR WORK
- QUALITY WORK
- COMPETITIVE RATES

**Call: 0117 949 0147**  
**07909 937 229 or 07970 596 260**  
**mccallplastering@hotmail.co.uk**

## Bristol Building Company

Quality building and garden solutions

- Refurbishment
- Extensions
- Roofing
- Kitchens
- Re-wiring
- Plumbing
- Windows
- Gardening Projects

References available.  
 Local, family run  
 company for 35 years.



*"Excellent, efficient service with many thanks for you and your teams good work."* David Wilkinson, Westbury Pk

*"My tired old house has been transformed into a fantastic home for my family."* Joanne, Bishopston

*"We have found the workmanship completed to a very high standard. I would thoroughly recommend the company to all."* Mary Hawkey, Horfield

**Tel: 0117 952 1944 or 07977 116842**  
 92 Bromley Road, Ashley Down

## 1st AZTEC Ltd



UPVC WINDOWS, DOORS &  
 CONSERVATORIES

**We supply and fit UPVC Sash Windows that can give the appearance of traditional wooden frames, in a range of colours.**

**UPVC Sash Windows require no maintenance and ensure your period property is draft proof, cutting your heating bills.**



Contact us for further information

**Tel: 0117 939 0841**

**E-mail: [info@1staztec.com](mailto:info@1staztec.com)**  
**Website: [www.1staztec.com](http://www.1staztec.com)**

## ✿ WILD ABOUT GARDENS ✿

Design & Build

Fencing, Decking & Turfing

Astro Turf

Tree Surgery & Pruning

Hedge Cutting, Planting Schemes

General Maintenance

Over 20 years experience ✿ Based in Bishopston

DOES YOUR GARDEN NEED A ONE OFF CLEAR UP?

**CALL SARAH WILDMAN**

**T: 0117 924 4550 M: 0777 923 7750**

FULLY INSURED LICENCED WASTE CARRIER

## Bickford's Stonemasons

Quality stone work in the Bristol region for over 35 years

Bristol's premier stone masonry company, taking on jobs ranging from:

**Replacement walls • Stone carving • Large properties**  
**Stone Cleaning • Victorian Houses and Grade 1 and Listed building**  
**Repointing • Complete stone restoration of church buildings**

*If you need stone repair, restoration, cleaning, or replacement,  
 you really don't need to look anywhere else!*

All our work is to the highest possible standard, and fully insured (Public/Employers liability).



Based locally in Bishopston

**[www.bickfordstonemasons.com](http://www.bickfordstonemasons.com) • 07979 916 664**

**Call us now on 0117 985 0749 for a FREE Quotation**

## Community Noticeboard

For free listings contact  
kerry@bishopstonmatters.co.uk

For the new online  
'What's on' diary of events visit  
www.bishopstonmatters.co.uk

Call 07881 924059

## Bishopston, Horfield & Ashley Down Local History Society

All meetings are on Tuesday and start at 7.30pm at  
Horfield Quaker Meeting, Gloucester Rd, BS7 8PD

### Tuesday 18th April

A holiday diary of 1836 in Bristol and  
Weston-super-Mare. Pat Hase.

### Tuesday 16th May

Bristol's lost city. Bristol International Exhibition  
of 1914. Clive Burlton.

bishopstonhistorysociety.wordpress.com

## Bristol St Andrews Bowling Club Try Bowls The Sport For ALL... Join Us In YOUR Local Community

Exercise, Social, Friendship, Competition & Much More!  
Come Along To Our Free Open Taster Days...

**Sunday 2 April Includes BBQ & Bar Facilities  
And Bank Holidays Mon 1 and 29 May**

All Day 10am to 4pm coaching & equipment provided,  
please wear trainers or flat shoes

Derby Road, Bishopston, BS7 9AQ

**Sat 1 April, Race Night from 7.30pm**

Website: www.bristolstandrewsbowlingclub.co.uk  
Email: bristolstandrewsbowlingclub@hotmail.co.uk



Meetings take place  
at 7pm, at the Dance  
Studio, The Station,  
Silver St, BS1 2AG

**APRIL MEETING Thursday 27, 7pm**

**NATURAL POND CREATION**

Richard Fishbourne, bugs & beasts expert

**MAY MEETING Thursday 25, 7pm**

**PESTS & DISEASES** Tim Foster, local author & lecturer.

**PLANT SALE** bring any spare seedlings/plants

**£3 Visitors, £1 AOG members, Teas etc included.**

email: secretaryaog@gmail.com  
www.groworganicbristol.org

Bristol Male Voice choir are delighted to present a  
joint concert with Melbourne Welsh Male Choir at  
7.30 pm on Thursday, May 4th in St Bonaventure's  
Church, Bishopston, Bristol BS7 8HP.

Tickets cost £10 and a bar awaits you after the concert.  
For tickets please contact our secretary on 0117 942 4378  
or our concert secretary on 0117 935 5597.

**Light Lunches at Bishopston Methodist  
Church, 245 Gloucester Rd, BS7 8NU**

**April 20th – Light Lunches**

are being served at the church from 12 noon to 1.30  
pm. Soup and a roll 60p, Jacket Potato £1.50. Other  
main course items such as salad or  
beans on toast 60p – £1. Dessert 60p.  
No Need to book.

**Contact Pauline on 0117 9698342  
for further information.**



The Ardagh Bowling Club opens its green on  
April 13th and welcomes new bowlers.

If you would like to try bowling come along  
on Friday evenings from 6-8pm Just wear flat  
shoes and pop along for a fun evening. we  
provide everything you need.

Any other info call 0117 9426 580

## SEWING WORKSHOPS

for Children (8-12Y)

Every Thursday  
in term-time  
4-5pm &  
5.15-6.15pm  
at Playful Cafe/  
Bishopston



**Tweed & Bird**  
- sign-up classes  
- £10 a session  
- most materials  
included  
- small groups

www.facebook.com/tweedandbird/  
or email to: tweedandbird@hotmail.com

## My Story Group

**Monday 3rd April at the Straw  
Balehouse, Golden Hill Community  
Garden (behind Horfield prison) from  
2.30pm to 4.30 pm. Free!**

For a maximum of 20 people probably  
aged 55+. Contact Paul Wheatcroft at paul.  
wheatcroft@yahoo.co.uk

The object being that participants come  
along and have fun telling a story or stories  
of five minutes duration about something  
true from their past life. In short, an  
opportunity to be heard and to share.

## Local Easter Services

**Bishopston Methodist Church,  
245 Gloucester, BS7 8NU**

**Maundy Thursday 13 April, 7.30pm, Holy Communion  
Easter Sunday 16 April, 10.30am, Easter Worship**

**Horfield Methodist Church  
Churchways Ave, BS7 8SN**

**Monday 10 April, 7.30pm, Worship for Holy Week  
Tuesday 11 April, 7.30pm, Worship for Holy Week  
Wednesday 12 April, 7.30pm, Worship for Holy Week  
Friday 14 April, 10am, Prayer and reflection  
Friday 14 April, 10.30am, Good Friday Service and Walk  
of Witness  
Easter Sunday 16 April, 10am, Easter Worship including  
Holy Communion  
Easter Sunday 16 April, 6pm Easter Worship including  
Holy Communion**

Join Ardagh Toddlers for the 2017

## EASTER EGG HUNT



at The Ardagh

Horfield Common

**Sat 8th April**

**10AM - 12.30PM**

Find all the Easter chicks  
& claim your Easter  
Bunny!

All  
Welcome!



FF: www.theardagh.com

**Horfield Baptist Church, 279 Gloucester Rd, BS7 8NY**

The theme for their Easter Preaching Series is 'On the  
edge of his pain' – Sundays and start at 10.30am.

**Saturday 1 April, 10-12, Messy Church (in the Fresh  
Ground Café)**

**Thursday 13 April, 7.30pm, Maundy Thursday Service  
Good Friday 14 April, 10.30am, Good Friday Service  
Sunday 16 April, 10.30am, Easter Sunday Service – He  
is risen!**

**St Michael's, Gloucester Rd, BS7 8NT**

**Sunday 2 April, 10.30am, Unpacking The Easter Talks.  
Palm Sunday 9 April, 10.30am, The King: anointed not  
elected.**

**Good Friday 14 April, 2pm, The King: dead not defeated.  
All Age Gathering.**

**Easter Day 16 April, 9am, The King: here not there  
Easter Communion & All Age Celebration: 10.30am St  
Andrew's Park.**

**Sunday 23 April, 10.30am, The King's People: make not  
build.**

**The Good Shepherd, Bishop Rd, BS7 8NA**

**Maundy Thursday 13 April, 7.30pm, The King: his rule not  
mine, communion.**

**Easter Day 16 April, 9.30am, The King: here not there,  
Easter Communion.**

## Dates 2017

April 1st

June 10th

August 5th

October 7th

December 2nd

**Horfield Baptist  
Church**

**Come and share  
the fun with us!**

More details from the  
church office  
office@horfieldbaptist.net  
0117 924 3608





# Community Matters...



**St George's needs stories...** St George's Bristol, the city's foremost venue for classical, jazz, world music and folk, is researching its history, with an ambitious Heritage Interpretation Project currently underway. The Great George Street concert hall is working with volunteer researchers to find out about its former life as a church, the design of the Grade II\* listed building and its metamorphosis into a music venue in the 1970s and 1980s.

One part of the project will see the creation of an online digital archive, with voices very much at its heart, and St George's needs your help. Do you have memories of coming to St George's when it was a church? Did you have a memorable wedding day? Do you recall something funny? Something unusual? If you have a story to tell, they would love to hear from you. The team is also looking for more volunteers, specifically to assist in capturing the voices for the oral history project; and also, any items that might be lurking in the attic that relate to the church or the venue. If you have something to contribute to the St George's Heritage project, or would simply like to know more about it, please contact Doreen Pastor, Community Learning & Volunteer Coordinator, by email: doreen.pastor@stgeorgesbristol.co.uk

**Lockleaze & Horfield Strollers** – This local group walks fortnightly on a Tuesday morning with numbers of around fifteen. If you would like more information on this or any of the Bristol Walking for Health groups or to complete the short health questionnaire, please contact – healthwalks@bristol.gov.uk or Saliha Ahmed, Engagement Worker, call: 0117 914 1129 (Tuesday–Friday).

**Tuesday 11 April, Newton St Loe** meeting at the Bus station 10.15, Bus (X39 at 10:24 to Newton St Loe) A walk around the parkland designed by Capability Brown. There is a steep section on this walk. Leaders Joan, John, assisted by Janet.

**Tuesday 25 April, St Anne's Wood** meeting at Horsefair back of Primark opposite Marks & Spencer 10.00 (walk to Wine St for Bus 36 @10.20) A walk along Brislington Brook and through Nightingale valley. Can be muddy in places. Leaders Stuart, John.

**Tuesday 9 May, Crow Lane open space** meeting at Horfield Leisure Centre 10.00 (Bus 76 to Crow Lane) A walk exploring this tucked away Open Space. Leaders Joan, Sheila.

**Tuesday 16 May, planning meeting** @ Horfield Lodge café 10:15. Everyone welcome.

**Tuesday 23 May, Oldbury Court Estate** meeting at Horfield Leisure Centre 10.00 (Bus 17 to Fishponds at 10.10) From Oldbury Court the group shall walk down the River Frome to visit the Brandon Trust Farm shop in Stapleton. Leaders Stuart, 'C'.

There are weekly walks (45–60 minutes) in Stoke Park on Wednesdays. Meet at the Hub, Gainsborough Square 1.30 pm.

**Bristol Bach Choir** presents an unforgettable evening of passion, power, precision and poignancy for the South West orchestral premier of Sir James MacMillan's St Luke Passion. The performance takes place on Saturday 1 April 2017, 7.30 pm at Bristol Cathedral, College Green, BS1 5TJ. Ticket Prices: £10 – £22 (Students and under 18s: £5 – subject to availability), purchase online: bristolbach.org.uk/tickets.php, call 0117 214 0721 or email: tickets@bristolbach.org.uk.

**Catch the Riff Raff and The Raff Pack out busking, together, with Gurt Lush and Bristol Man Chorus**, on Sunday 23 April from 3 pm outside the Arncliffe. They will be raising money for The Choir With No Name, a charity that runs choirs for homeless and marginalised people, as part of their spring fundraising appeal 'All Together Now'.

**Community Navigators** A consortium of community organisations have been awarded £250k of Big Lottery money to deliver a three-year Community Navigators project combating social isolation among over 50s in North Bristol. Community Navigators North will provide one-to-one support to isolated older people to help them access social activities, including volunteering, to combat loneliness and promote community resilience. The project is led by North Bristol Advice Centre working in partnership with Southmead Development Trust, Ambition Lawrence Weston, Avonmouth Community Centre and Shirehampton Community Action Forum (SCAF).

Through the project, a team of Community Navigators will be out and about in their local communities supporting older people into local activities, including help to overcome barriers. They will provide home visits, trial new ways of engaging the most isolated and support older people to get involved with the project through volunteering.

The contract was awarded by Bristol Aging Better (BAB), a five-year programme funded by the Big Lottery Fund aiming to reduce loneliness and isolation among older people in Bristol. The Community Navigators North project covers Bishopston, Ashley Down, Horfield, Lockleaze, Cotham, Redland, Stoke Bishop, Southmead, Westbury-on-Trym, Henleaze, Avonmouth, Lawrence Weston, Henbury and Brentley.



**The annual pairs skittles tournament at Bristol St Andrews Bowling Club** was well supported with 15 pairs taking part, from members of the bowling club, to Olveston and Greenbank plus their

club Sponsor: Co-Op Funeralcare. A raffle was held by Chairman, John Pearce who then expressed a thank you of support to the club volunteers and support from all for taking part. The Winners and Runners-up on the evening as follows, taking away a prize pot of £95 split between: 1st Paul Bryant and Rachel Winter-Alsop (63 PINS), 2nd Mike and Anita Lavis (54 PINS, playoff winners) and 3rd Trevor and Simon Wilkins (54 PINS).

**Antique & Vintage Fair**, Sunday 9 April, 10 am to 3.30 pm at Ashton Court Mansion, Long Ashton, BS41 9JN. 40 stalls – fine jewellery, china, furniture, pictures, retro items, vintage clothing and more. Cafe with afternoon teas, £2 entry (under 16s free).

## Horfield Baptist Church – help us celebrate 125 years!

**It is Horfield Baptist Church's 125th anniversary this year and there will be a special day of celebration on Saturday 6 May. The church will be open from 10 am to 4 pm.**

There will be: an exhibition of photographs, memorabilia and personal memories of the church's history. The church's Fresh Ground Café will be open for coffee, cake and light lunches – at its usual good value prices! Other activities are being planned – check the church website for details.

The open day provides a great opportunity to find out more about the history of one of Gloucester Road's landmark buildings, have a look inside, meet some of the people involved with the church today and enjoy some refreshments. You will be very welcome.

Horfield Baptist Church, with its impressive façade and twin towers, is a well-known sight for people using Gloucester Road.

The church was founded in 1892 by Baptists who had previously worshipped in Broadmead. The first worship building was a tin tabernacle, but the rapidly increasing congregation soon outgrew it! The foundation stone of the church we see today was



## Love Window Wanderland?

**Want to be a part of the team to keep it running?**

After two FAB years, we're saying a fond farewell to our Event Co-ordinator Dom, Map-maker Paddy and Social Media butterfly Gem so we are looking for volunteers to help organise the 2018 Bishopston event. Our ethos is 'many hands make light work'.

So, want something new on your CV? We are gaining a great reputation for this event. Whatever your area of interest, from schools to press, maps to co-ordinating, we have space for you and your skill set.

**Contact Lucy at windowwanderland@gmail.com for more info.**



laid in 1900. The Memorial Building to its right, which now houses the church café, was added in the 1920s.

The Grade 2 listed church has an Arts and Craft feel. It is constructed of Bristol rubble stone with dressing and towers of Bath Stone. The interior has excellent woodwork, with galleries on three sides resting on near-classical iron columns. A striking feature is the 1905 organ and casing. There is a choir platform and a very well carved perpendicular pulpit.

It remains home to an active and friendly church who would be delighted to welcome you on 6 May or at any time during this anniversary year.

**Find out more about Horfield Baptist Church, its history and to share any memories you have of the church at [www.horfieldbaptist.net](http://www.horfieldbaptist.net)**



# Index of Local Advertisers

<b>Accounts / Book-keeping</b>		Matt Pederick	63	Inside & Out	70
Tax Assist	14	Redland Electrical Services	64	South Gloss Decorating	62
<b>Aerials</b>		<b>Estate Agents – Ocean</b>	1	Space Decorators	62
Dan Grace Aerials	65	<b>Fashion Shops/Pop-Ups</b>		<b>Pets</b>	
MD Aerials	66	Billie Jean Cashmere event	11	Animal Health Centre	34
<b>Architectural Services/Planning</b>		<b>Flowers – The Flower Shop</b>	27	Companion's Haven Ltd	46
RL Architecture	69	<b>Footcare – Footcare by Christine</b>	31	New Passage Kennels	38
<b>Bakeries – Joe's Bakery</b>	13	<b>Framing – Niche</b>	45	Roxford's Pet Shop	46
<b>Bespoke Playhouses &amp; Climbing Frames</b>		<b>French Language classes</b>		<b>Photography</b>	
Little House	50	Oh la la French classes	30	Kate Kirby Photography	8
<b>Bicycle Shop/Repair – The Bike Man</b>	12	<b>Garden Design/Maintenance</b>		Zzzone Photography Studios	23
<b>Buddhist Centre</b>		All Gardens	58	<b>Physiotherapy</b>	
Sakya Buddhist Centre	30,31	Alpine Landscaping	16	Peak Physio & Pilates	29
<b>Building Maintenance/Construction</b>		Bristol Landscaping Services	46	<b>Pilates</b>	
Bespoke – New Build Specialists	2	Catherine Dixon (Organic)	6	Flow Motion Pilates & Massage	31
Bristol Building Company	73	Collins Tree Services	62	Peak Physio & Pilates	29
Denise Howard Brickwork	70	Secret Garden	57	<b>Plasterer</b>	
Expand Building	63	Wild About Gardens	72	A&P Plastering	64
Halldor	64	<b>Glazing &amp; Doors</b>		John Drake	62
Homefix	63	1st Aztec Ltd	73	McCall Plastering	72
Pear Tree	70	Price Glass	68	<b>Plumber</b>	
Prime Properties	70	<b>Hair, Beauty, Fashion</b>		JPK Plumbing	65
Renovate	66	Designers Barber Shop	12	Matt Pederick	63
<b>Carpentry</b>		Hair Mechanics	26	Roost Plumbing & Heating	71
BS7 Building & Carpentry	64	The Green Room - Hair	36	Watertite Plumbing	64
Gareth Jones - <i>traditional fitted furniture</i>	69	The Hair Force (head lice care)	38	<b>Printing Services/Ink</b>	
Orchard Carpentry	71	The Nail Shed	37	Mocking Bird Press	23
<b>Carpets/Flooring</b>		<b>Hardware Stores</b>		Niche	45
Lee's Carpets	59	Pearce's Hardware	13	Xpress Printing	3
Natural Born Flooring	67	<b>Health, Diet, Fitness &amp; Sport</b>		<b>Property Services</b>	
<b>Cars</b>		Bristol Central Tennis Club	16	Homefix	63
Brookfield Garage	56	Clifton College Sports Centre	28,29	Jamie Eriksson	65
CC Garage	47	Horfield Leisure Centre	18,19	Party Wall Surveyor	71
Windsor Road Garage	6	Nutrition Coach Bristol	29	Paull Property Services	71
<b>Children's Activities/Entertainment</b>		Sleep Therapy	42	Prime Maintenance	20
Bristol Central Tennis Club	16	Weight Watchers	36	<b>Restaurants/Cafes/Pubs/Takeaways</b>	
Clifton College Birthday parties	4	<b>Heating - Gas/Elec</b>		Romanesca - Pizza	21
Clifton College Holiday Clubs	22	All Works Plumbing & Heating	69	The Bishopston Fish Bar	15
Tweed & Bird Sewing Courses for kids	75	Heating Engineer - <i>John Presland</i>	69	The Bristol Fryer	24
<b>Childcare</b>		Roost Plumbing & Heating	71	The Royal Oak	79
Archfield House Nursery	54	<b>Home Interior Shops/Services</b>		<b>Retirement Accommodation</b>	
Ashgrove Park & Clyde House Nursery	22	Bathroom Installation - <i>All Works</i>	69	Abbeyfield House	53
<b>Cleaning Services</b>		Marialina Fabric & Soft Furnishings	14	<b>Roofing</b>	
Clean Expectations	23	<b>Homestay Accommodation required</b>		McCall Roofing	72
Swan Cleaning Company	33	English Language Centre	24	Rooftech	66
<b>Climbing Facilities/Classes</b>		<b>Hypnotherapy – Jo Gray</b>	42	The Roofing Company	65
Undercover Rock	51	<b>Jewellery</b>		<b>Schooling/Tuition/Courses</b>	
<b>Complementary/Holistic</b>		Catherine Amesbury – Artemis Shop	13	Bristol Grammar School	7
Bowen - <i>Jane Hird</i>	30	Kemps	26	Clifton High School	32,33
Flow Motion Pilates & Massage	31	Little Tinkers Silver Co	27	UWE Teaching programme	25
Kinesiology and EFT Practitioner	48	<b>Music – Tuition/Performance services</b>		<b>Sleep Therapy Courses</b>	42
Samasuri -		Graham Sothcott - <i>Guitar/Ukulele</i>	55	<b>Solicitors</b>	
Biodynamic Craniosacral Therapy	42	Wed the Strings	48	Scruse Employment Solicitors	42
<b>Computers</b>		<b>Optometrists</b>		<b>Stone Mason</b>	
I love my PC	55	Lunar Optical	10	Bickford's Stone Masons	73
Xpress Computers	3	Lynne Fernandes	49	<b>Textile/Embroidery Artwork</b>	
<b>Dental Care – Horfield Dental Care</b>	43	<b>Painting &amp; Decorating Services/Shop</b>		Kate Turling Textiles	11
<b>Editorial Services – Rebecca Ramsden</b>	48	Advanced Decorators	66	<b>Theatre – The Kelvin Players</b>	44
<b>Electricians/Electrical Shops</b>		Alan Anstey	65	<b>Transport – First Bus Group Bristol</b>	39,80
KC Electrical	63	Carter Decorating	64	<b>Yoga – Yoga West</b>	1
Leroy Charnick Electrical Services	65	Casa Colour Painting and Decorating	35		

**EDITOR'S NOTE:** Please note that we try to be as unbiased as possible in the editing of this magazine. We cannot take responsibility for anything stated by an advertiser and cannot be held responsible for misrepresentation in the adverts included. Views and opinions expressed are not necessarily those of the editor (unless it is a personal review of a service that we have participated in). We cannot vouch for every advertiser personally (although since starting this magazine we have used many of the services). Any feedback or experience is welcomed. **The Small Print!** Bishopston *Matters* will be distributed during the first week of every month (as far as possible) to 3,500 homes per month on a three month rotational basis (10,500 homes per quarter) covering the areas of Bishopston, Ashley Down, Horfield & St Andrews. We cannot be held responsible for any inaccuracies in advertisements nor for any consequences arising from this. We are not to be held responsible for damage or loss of copy or error in printing. It is the advertiser's responsibility to ensure conformity with the Trade Descriptions Act 1975, Business Advertisements Disclosure Order 1977, Sex Discriminations Act 1975 and the Consumer Credit Act 1974. All artwork used in Bishopston *Matters* must not be published in any other media without our permission.

Bishopston *Matters* is run independently but under licence from the *Matters* Magazine franchise.

For further information on *Matters* Magazines see [www.mattersmagazines.co.uk](http://www.mattersmagazines.co.uk) © Bishopston *Matters* 2017

The ROYAL OAK

Astonishingly Affordable

April

50% off

main meals

Mon – Thurs

12 til 3pm

[some supplements may apply]

The Royal Oak | 385 Gloucester Rd Bs7 8TN  
theroyaloakbristol@gmail.com | 0117 9892522

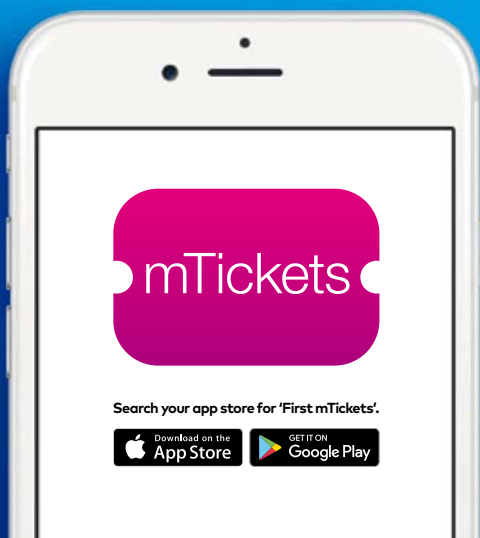
Don't forget to mention Bishopston *Matters* when replying to ads!

# Beat the rise.

Buy bus tickets on your mobile.

Bristol Inner Zone ticket	Old cash price	NEW cash price from 2 April 2017	mTicket price
Short trip single up to 3 miles	£1.70	£2.00	£1.50 (when you buy a pack of 5)
Long trip single over 3 miles	£2.70	£3.00	£2.50 (when you buy a pack of 5)

No smartphone? Save with Touch Card.



**First**  **Bus**

[www.firstgroup.com/bristol](http://www.firstgroup.com/bristol)